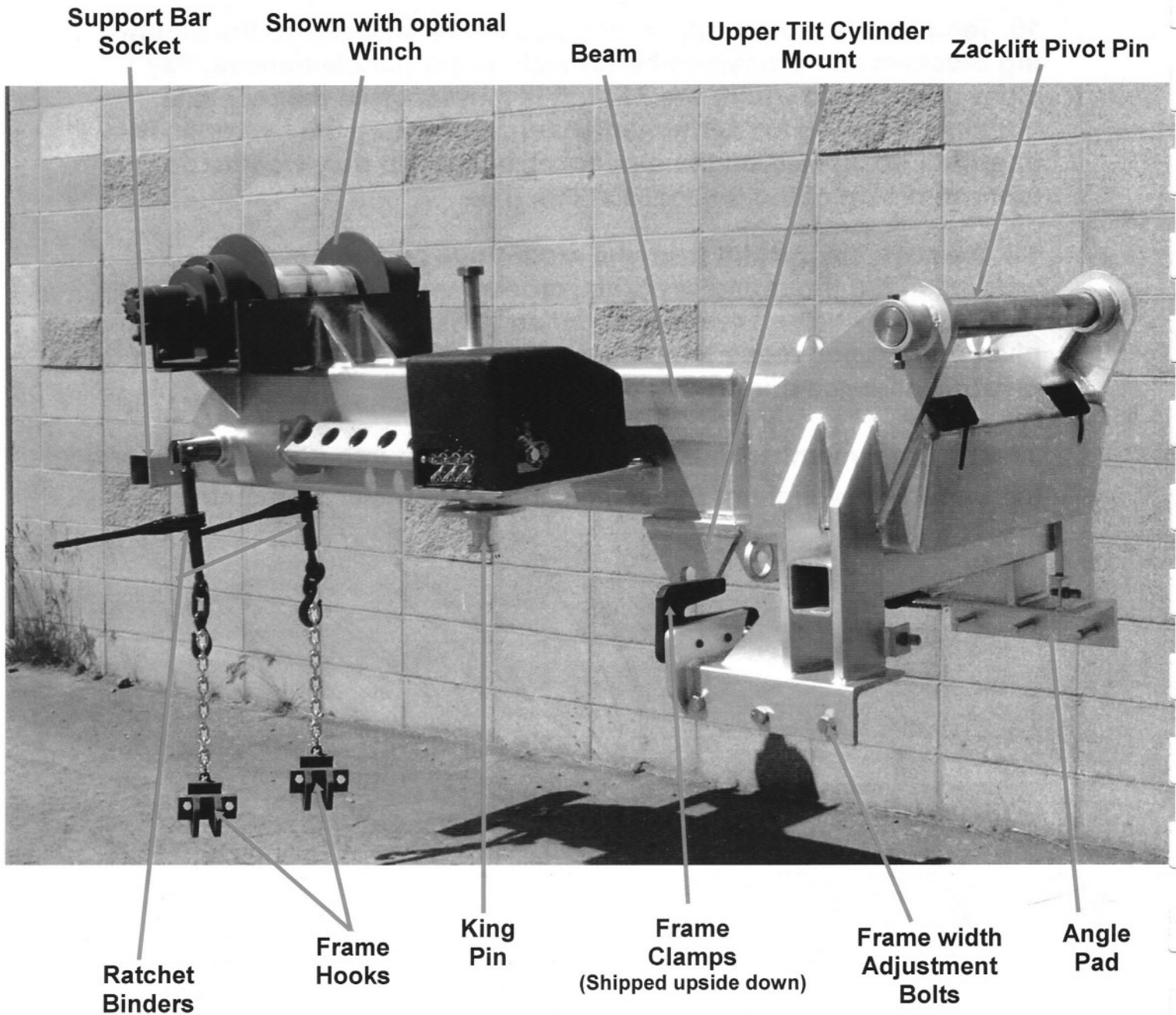
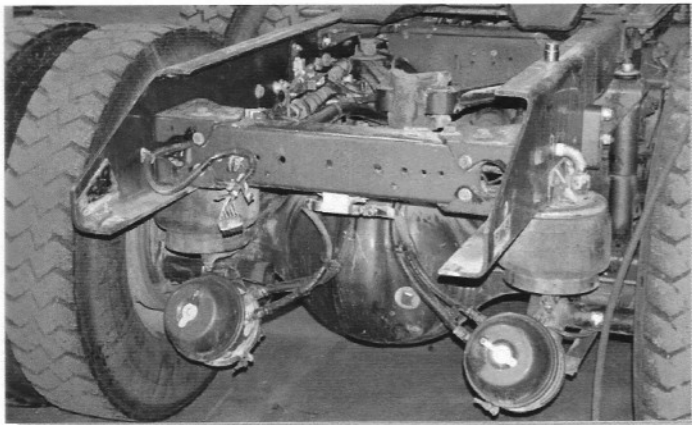


Fifthwheeler Installation



FIFTHWHEELER INSTALLATION



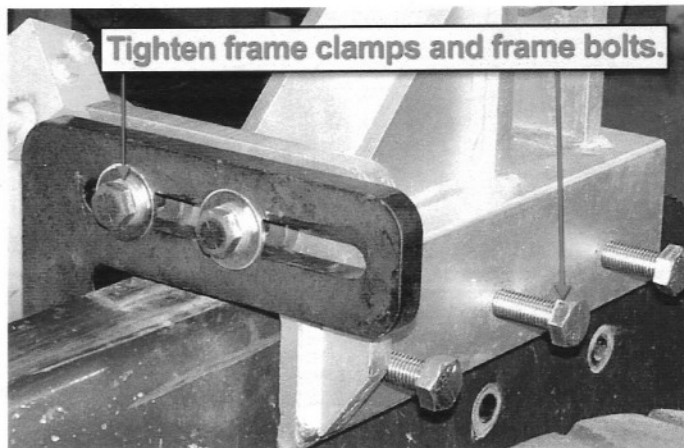
1. Remove rear crossmember only if needed. (in rare cases)
2. Set FIFTHWHEELER beam on truck frame in approximate location.
3. Adjust 5th wheel plate to approximate position.
4. Screw king pin up or down to level the rear angle pad on chassis frame.



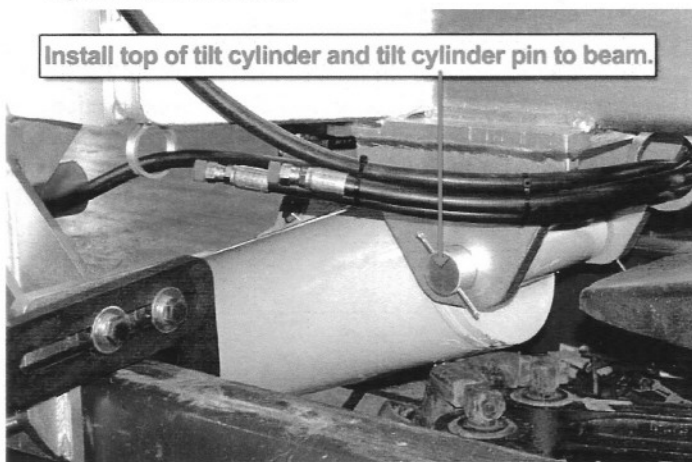
5. Slide the entire beam and 5th wheel plate forward or back into approximate position so as the heel of the horizontal section of Zacklift underlift is 10 inches from differential for clearance.



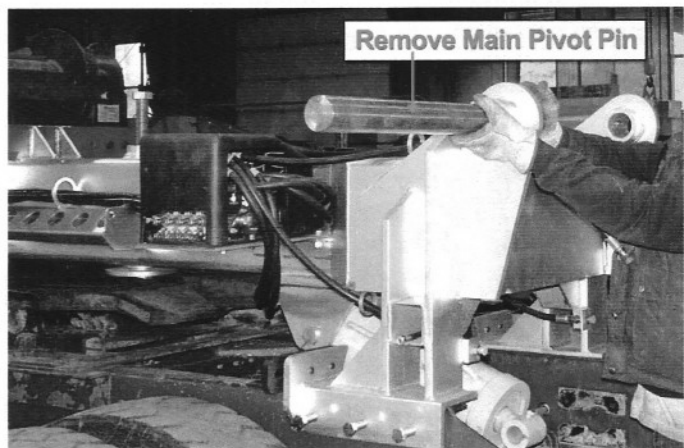
6. Position frame hooks under truck frame. Ideal location is in front of an existing cross member.
Thread chain through D-rings to secure 35" tube.
7. Hook chains to hooks on end of ratchets.
Tighten ratchets evenly.



8. Tighten bolts on rear angle pad to truck frame.
9. Fit slotted edge under truck frame. Tighten bolts securely.

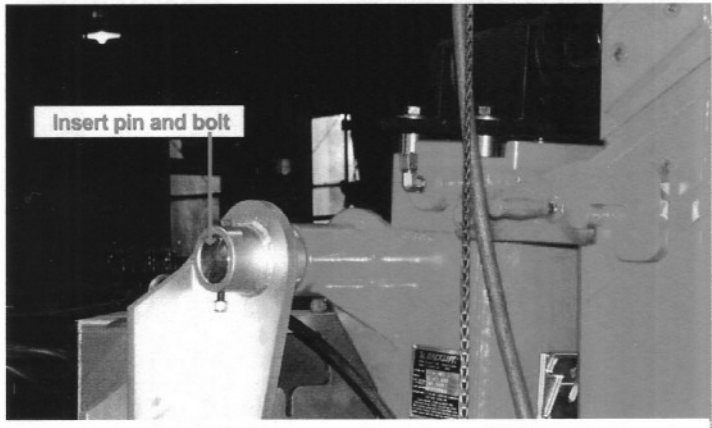


10. Put tilt cylinder in to position by pinning at top of cylinder to beam.

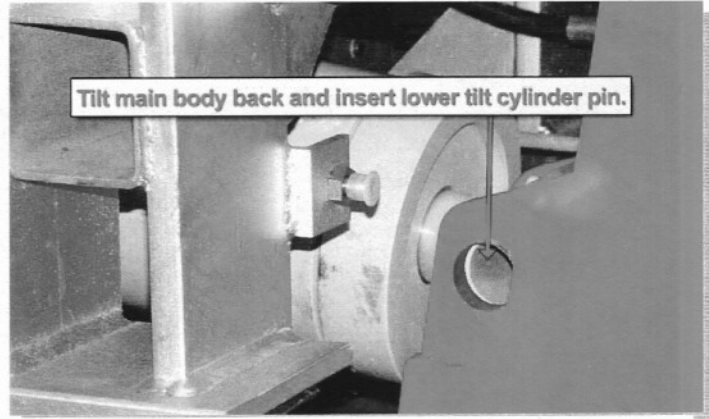


11. Hang Zacklift underlift on beam by pulling pivot pin.

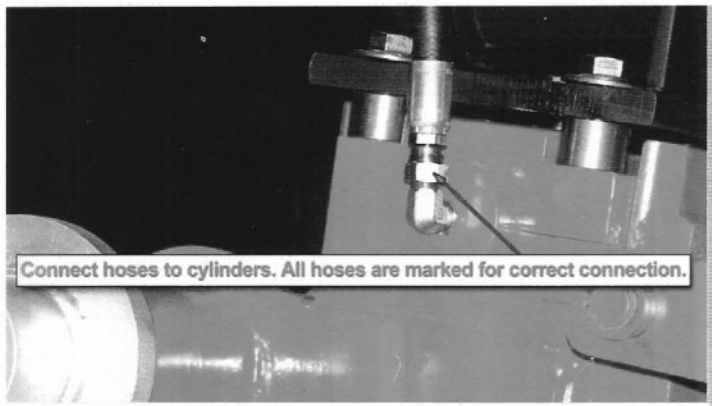
FIFTHWHEELER INSTALLATION



12. Be sure to use bushing (supplied) in Zacklift . Bolt securely.

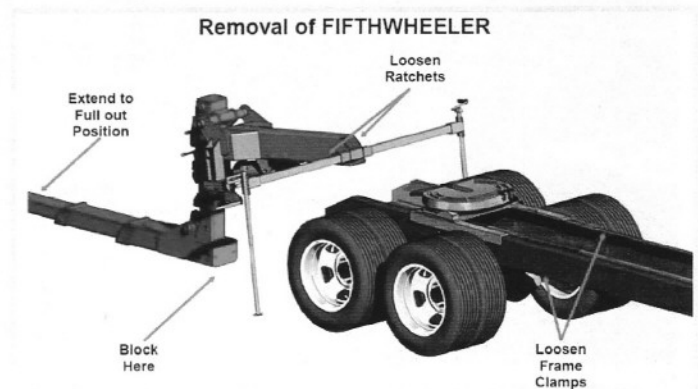


13. Put tilt cylinder into position by pinning.



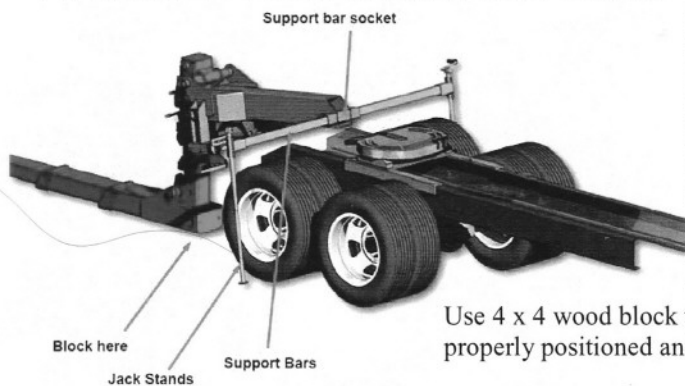
14. Connect all hoses. All are marked for proper installation.

Removal of FIFTHWHEELER



1. To remove FIFTHWHEELER loosen frame clamps.
 2. Extend horizontal section of Zacklift to full out position.
 3. Block unit under horizontal main. (see illustration)
 4. Use "down" function to lift FIFTHWHEELER beam slightly above truck frame.
 5. Pull king pin latch.
 6. Use "tilt" function to lift front of FIFTHWHEELER beam.
 7. Disconnect all hydraulics, air and electrical connections.
 8. Carefully stabilize FIFTHWHEELER with supplied supports (see page K-5 for view of supplied supports) to secure it in an upright position to prevent tipping when vehicle is re-moved.
- WARNING FAILURE TO STABILIZE FIFTHWHEELER COULD RESULT IN SERIOUS INJURY OR DEATH.**

FIFTHWHEELER Installation Jack Stands



Use 4 x 4 wood block to support horizontal tube. CAUTION Jack stands must be properly positioned and secured before driving out from under FIFTHWHEELER.

Insert support bars into support bar socket. Support bar socket is located on FIFTHWHEELER beam near the front ratchet binders. Slide jack stands over ends of support bars. Crank jack stands up as far as needed to clear truck frame. Release king pin and loosen clamp on angle pad , remove chain from ratchet binders before driving out from under FIFTHWHEELER.

FIFTHWHEELER Parts Identification

Fifthwheeler Part/Z18,30,303,403

Fifthwheeler

- Part #** Z1304-52a 3-Section Manual/Electric Valve
 Z1304-59m 12 Volt Power System (not shown, no charge option)
 Z5-352 3 x 3" Safety Crossbar (not shown)
 Z5-353 Safety Jacks w/Adapter pair
 Z5-354 Crank Handle for Safety Jacks
 Z5-381 Frame clamps with Chains
 Z5-384 Adjustable King Pin
 Z5-385 5/8 x 2" Bolt Grade 8
 Z5-389 Ratchet Binder with Hook
 Z5-391 Ratchet Pin 3/4" w/2 Snap Rings
 Z5-393 Frame Clamp (rear)
 Z5-395 Main Pivot Pin with 2 Bolts and Nuts
 Z5-396 3/4-10 x 3" Tap Bolt Grade 8
 Z5-397 Front Beam Pin
 Z5-400 35" D-Ring Tube with 2 Blocks
 Z5-401 12 Volt Mounting Plate
 Z5-402 Manual/Electric Plate
 Z5-662 Straight Beam Weldment
 ZVC-1 Manual/Electric Valve Cover
 ZBC-1 12 Volt Power Pack Cover
 ZDP-2000 20,000 lb. DP Winch (OPTION)
 ZDP-2500 25,000 lb. DP Winch (OPTION)

