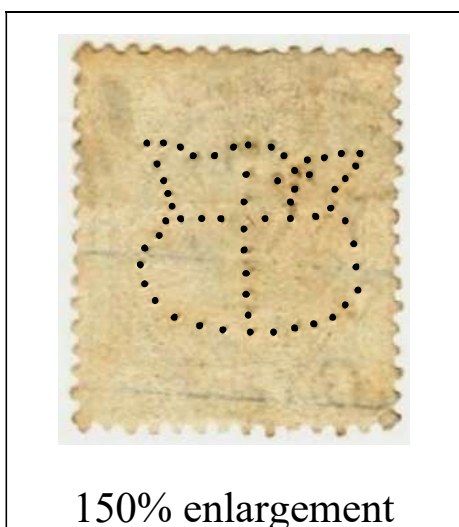


CYPRUS PERFIN?

Tony Stanford

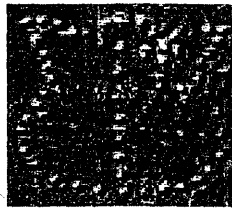
An interesting item is a dubious perfin on a genuine 1882 QV half piastre dull green SG16a cancelled Larnaca 16 Dec 1886, with what I can best describe as a 'pin-hole perfin of cross in profile of an angel'. Illustrated below are scans of the front and back. I would be very interested to hear if any member is aware of any similar perfin or can identify the pattern.



[Ed: - The pin-hole perfin on this stamp is very feint so on the enlargement the pattern has been enhanced to make it clearer.]

Cyprus Perfins - Tony Stanford

The ½d Bantam illustrated on page 52 of the November 2006 CCP has the perfin "**MBW**" of the **Metropolitan Board of Works** whose head office was at Spring Gardens, Charing Cross, London. This perfin is recorded on SG 48 bantam plates 4,5,6,8,9,10,11,12,14,15,20 during the period 1870-84. The CYPRUS overprint is bogus and I expect that close examination would reveal that ink from the overprint has entered the perfin holes.



An interesting variant is a dubious perfin on a genuine 1882 QV half piastre dull green SG16a cancelled Larnaca 16 Dec 1886, with what I can best describe as a 'pin-hole perfin of a cross in profile of an angel'.

Illustrated are scans of the front and back. I would be very interested to hear if any member is aware of any similar perfin or can identify the pattern.

[Ed. The small grey diagram above was created by using Adobe Photoshop – Filter – Stylise – Emboss. There has been no manual alteration]