
**The Panama Pacific International Exposition Perfin
(P-188)
A Follow-Up
(Dave Savadge)**

The article by Bill Lesh printed in issue 592 of the Perfins Bulletin is one of the best I have ever read for providing a general high-level overview of operations at the Panama Pacific International Exposition in San Francisco. I will now expand on some further interesting examples and uses of the only perfin ever used by an exposition.

The largest known block with P-188, either mint or used, this mint block of 10 of the 2-cent Washington-Franklin definitive.



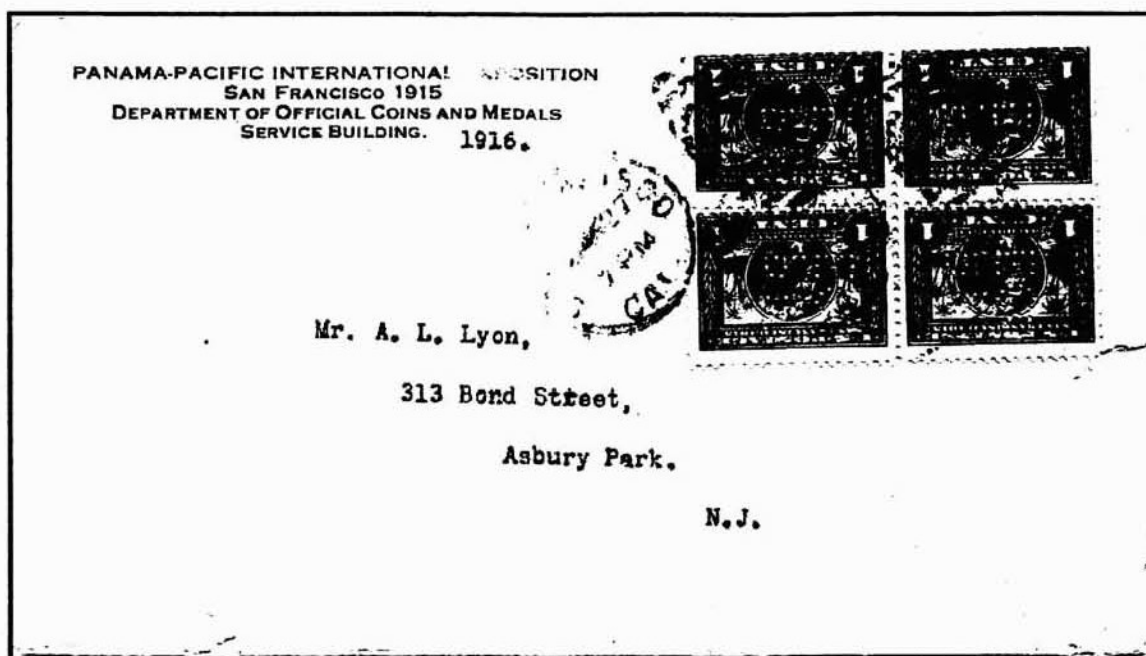
The only known mint copies of special delivery stamps with P-188.



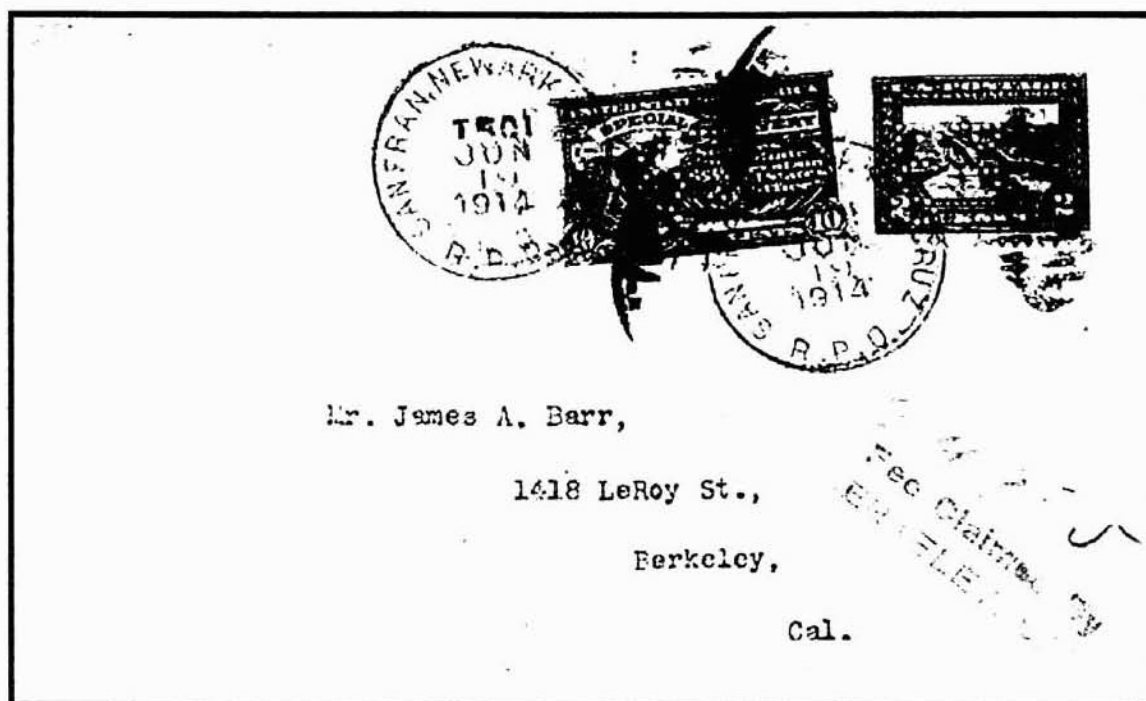
Perforated 12

Perforated 10

The largest multiple of P-188 known on cover, from the Department of Official Coins and Medals, 27 January 1916.



One of two known Panama Pacific special delivery perfins on cover. Another P-188 perfined special delivery stamp has been recorded on a cut-out piece.



19 June 1914: San Francisco, Newark and Santa Cruz RPO. A most interesting use of the perfin on a card to pre-pay return postage, a forerunner to today's business reply mail.



Manager

Bureau of CONVENTIONS and SOCIETIES

Panama-Pacific International Exposition

San Francisco,

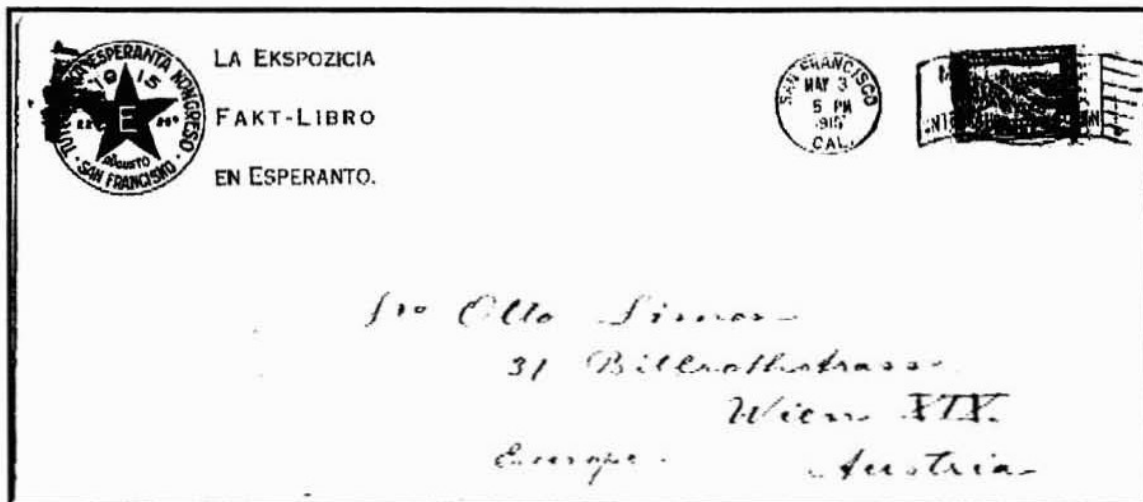
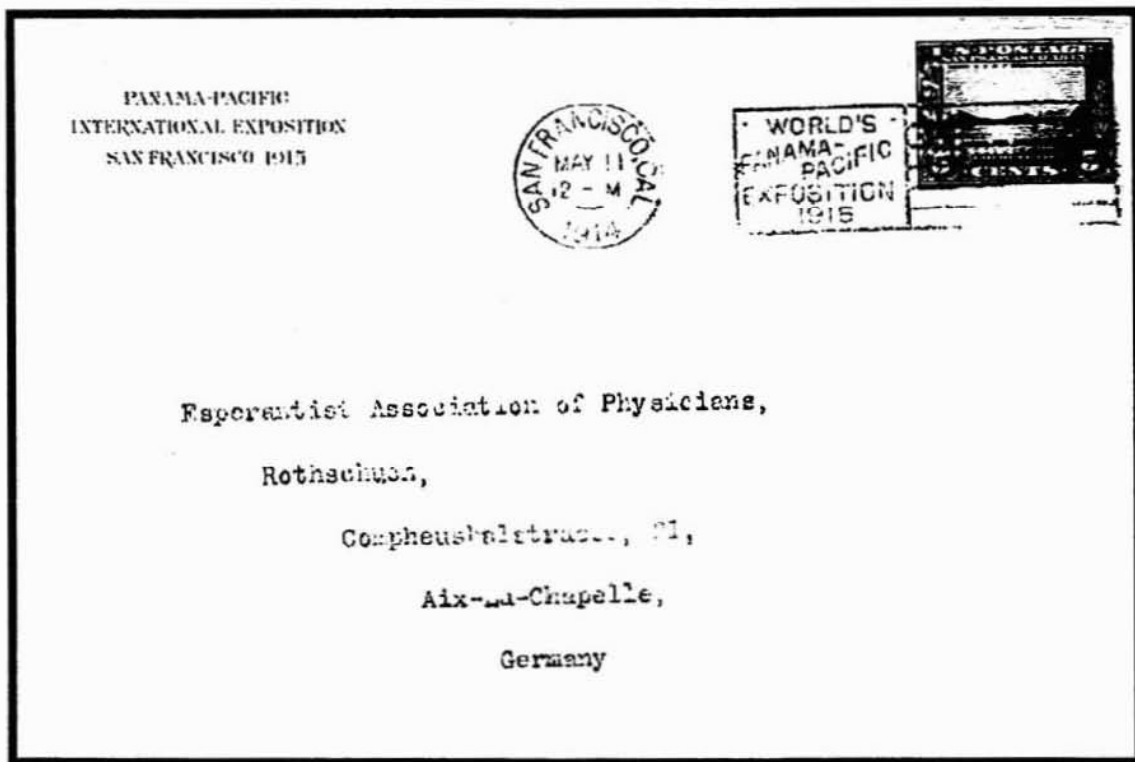
California.

NATIONAL OR INTERNATIONAL

1. **NAME OF ORGANIZATION** _____
2. **NAME OF SECRETARY** _____
ADDRESS _____
3. **TIME AND PLACE OF NEXT MEETING** _____
4. **MEETS HOW OFTEN** _____
5. **NAMES AND ADDRESSES OF PROMINENT MEMBERS IN OR NEAR SAN FRANCISCO**

Only this one unused example has been recorded; the expo's business office probably destroyed the returned cards after extracting the information from the reverse side. Such used cards would have a variety of non-San Francisco cancellations from all over the country.

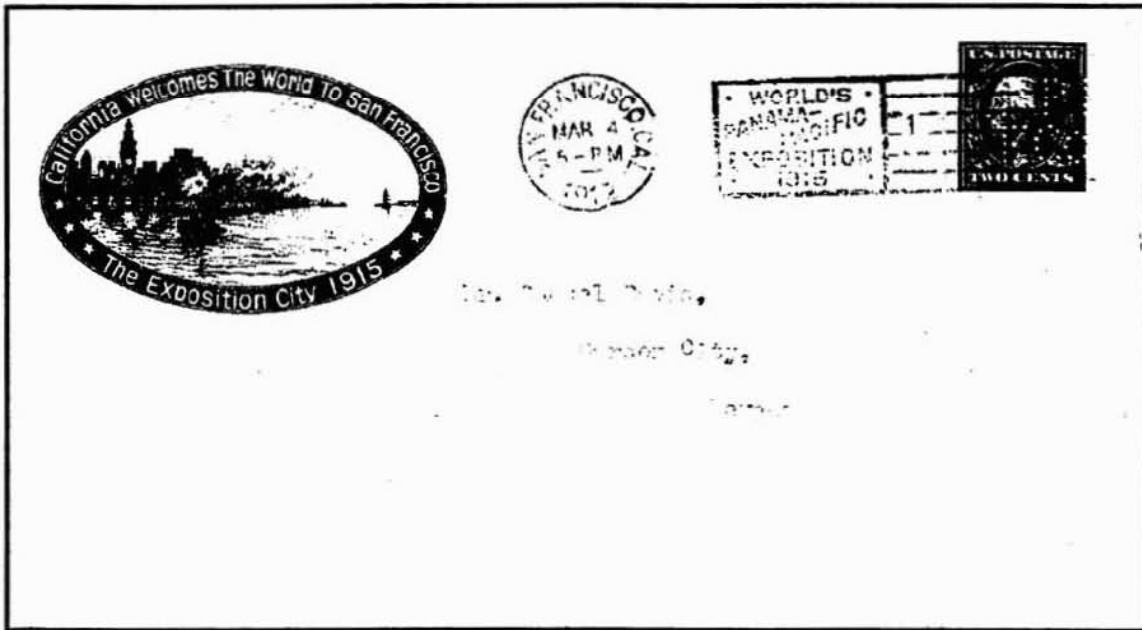
The only recorded on-cover example of P-188 on the Panama Pacific 5-cent stamp used to a foreign country. Esperanto related address.



Another Esperanto related cover with P-188:

3 May 1915: Bomar SF15-03, to Austria, double printed matter rate, sent unsealed.

In Bill's article, he indicates that the first use of P-188 occurred in February 1912. This statement is in error, but not Bill's fault. I am guilty, I provided him incorrect information when we corresponded – my memory isn't what it used to be. So blame me for the mistake, not Bill. The earliest known use of P-188, as of now, is 4 March 1912. However, this does not preclude an earlier dated cover.



Finally, the only known illegitimate use of the Panama Pacific perfin, on a tourist card postmarked 19 February 1914 in Omaha.

