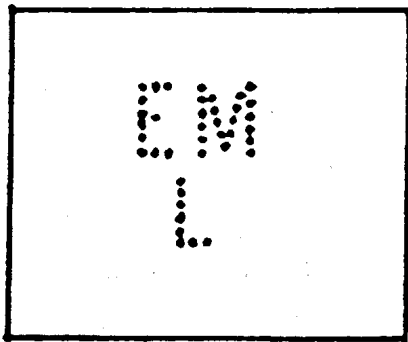
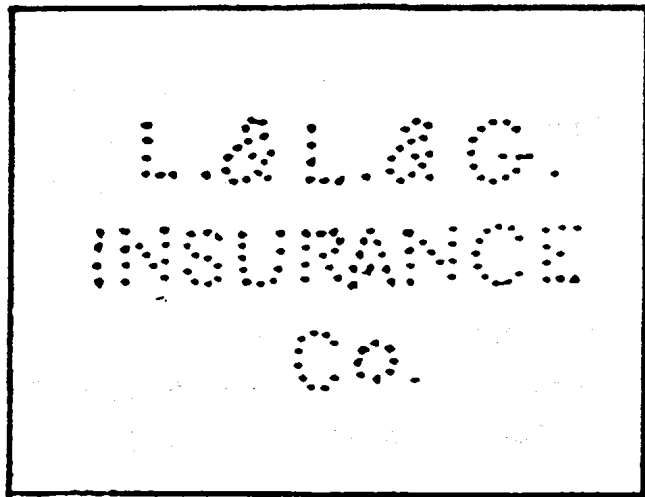


PERFIN PINNACLES (OF AUSTRALIA) from John Mathews.

JOHN MATHEWS of Australia enjoyed Roy Gault's paper on this subject (Bulletin 260 Pg. 11) and it suggested to him the following Antipodean Perfin Pinnacles.

MOST HOLES

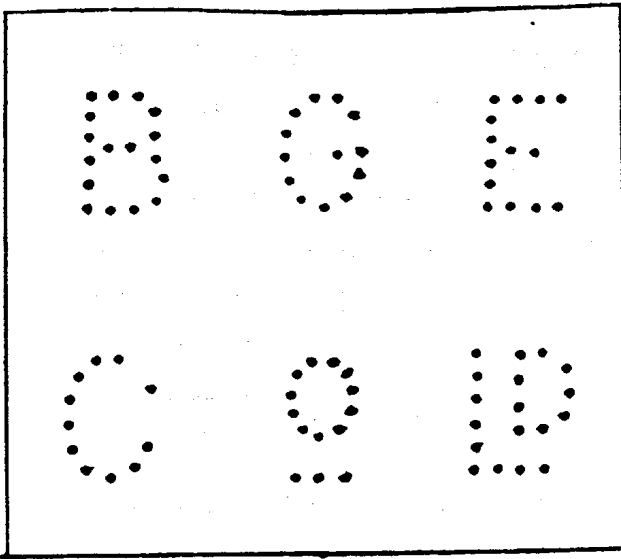
L.& L.& G./INSURANCE/C⁰. has 166 holes (Liverpool & London & Globe Insurance Co.) This perfin is known on both postage and revenue stamps, and its original purpose may have been for the latter. It would cover a block of 3x2 of the stamps in use at the time.



MOST REMOTE

EM/L (Edkins, Marsh & Co., stock & station agents of Longread, Queensland). Longread is 150 miles from the nearest part of the coastline and 625 miles from the nearest State capital (Brisbane). Lerwick, by comparison, is only 590 miles from London. A dated copy of "EM/L" shows the year 1908.

BIGGEST LETTERS (New category)

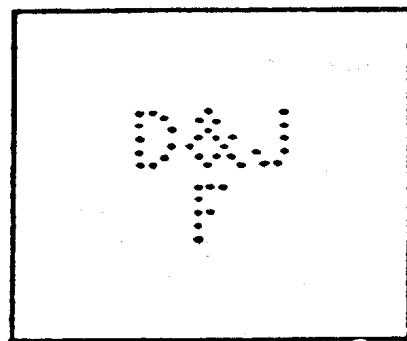


I offer BGE/CoLd of the British General Electric Co. Ltd. of Sydney(c.1925) which adequately covers 4 stamps. This is one of my personal favourites. I found the "BG/Co" part on a joined pair of used SG37 in one part of a dealer's stock book at a Fair, and a third copy loose (but obviously joined to the pair when on the envelope from the match-up of the post-

mark) in the back of the book! The loose one had the letters "Ld" A short illustrated article in our Australian Bulletin brought forth a "KGV Head" stamp which showed the "E" and part of the "G" which together with the other three stamps allowed the whole die to be seen. I presume this is what is meant by a 'carpet die'. The Roo and KGV Head stamps are the only known issues with BGE/CoLd perfin and thus no revenue or other non-postal usage.

LONGEST LIVED

D&J/F (D.& F. Fowler, Wholesale Grocers of Adelaide). Dated copies are known from 1884 to 1953, although G.P.O. archive records show permission was granted to them on 29/9/77. David Scott (Birm'ham) has already found the entry in the Sloper records for D&J/F - in Feb' 1880 - which we think is the earliest of the Australian ones even though that date is just over two years after they obtained 'Post Office' approval to perforate.



* * * * *