

NOTES, UNLESS OTHERWISE SPECIFIED:

1.

2 MATERIAL: GLASS OPTICAL, NON-BROWNING TYPE LG7800, ANNEALED. ALTERNATE MATERIAL: SCHOTT S8003N.

3 POLISHED SURFACE - ALL OTHERS GROUND.

4.

5 DIMENSION SHOWN APPLIES AT THE INTERSECTION OF THE VERTICAL AND HORIZONTAL OPTICAL AXIS.

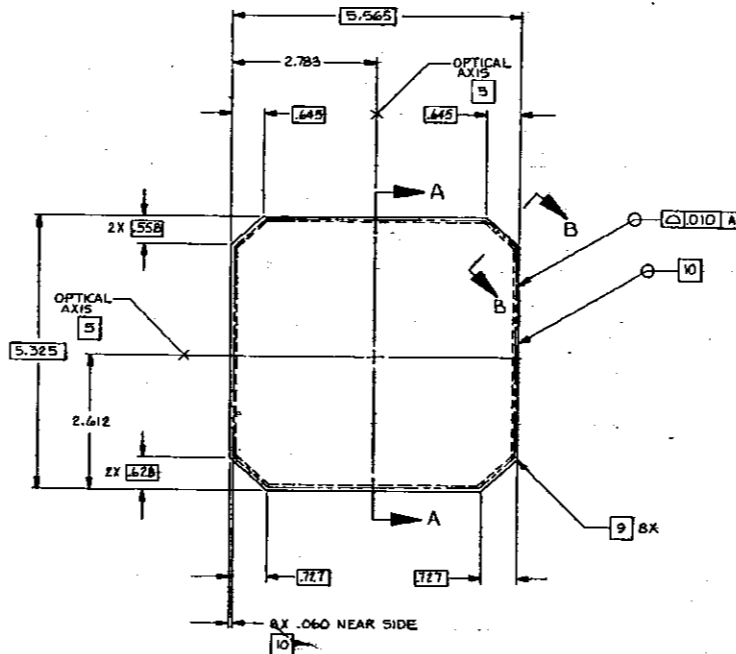
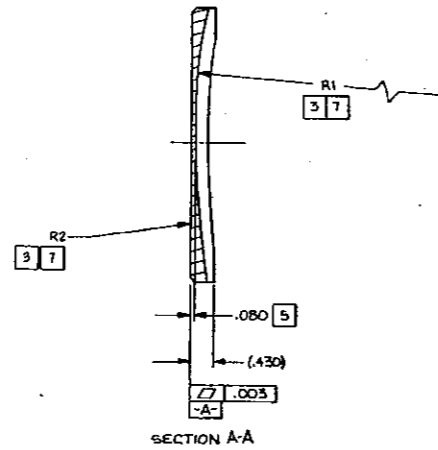
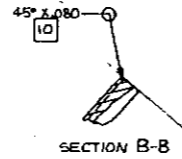
6.

7 SURFACE QUALITY TO BE IN ACCORDANCE WITH TABLE 1.

8 SURFACE QUALITY AND WORKMANSHIP SHALL BE IN ACCORDANCE WITH TABLE 1.

9 SHARP EDGES TO HAVE PROTECTIVE BEVEL .03 MAX FACE WIDTH.

10 SURFACE QUALITY NOT REQUIRED IN AREAS INDICATED.



REVISION STATUS OF SHEET	
SHEET NO.	REVISION

SURFACE QUALITY/WORKMANSHIP 1/ TABLE 1		
CHARACTERISTIC	CRITERIA	INSPECTION REQUIREMENT
SCRATCH / DIG	80S AND 50D	100%
GLASS DIMPLES / PITS	≥ .010 INCHES - NONE < .010 INCHES - NO LIMIT	100%
EDGE CHIPS - GLASS	≥ .030 INCHES DIAMETER - NONE 4.030 INCHES DIAMETER - LIMIT 3 PER EDGE - MAXIMUM 2.030 INCHES WIDTH x .050 THRU .100 INCHES LENGTH - NONE 2.030 INCHES WIDTH x .050 THRU .100 INCHES LENGTH - LIMIT 3 PER EDGE MAXIMUM	100%

LENS DATA		
	SPHERICAL RADIUS	RADIUS TOLERANCE
R1	16.50	± .25
R2	∞	± 1.000

NOTES: 1/ EXAMINATION SHALL BE IN ACCORDANCE WITH MIL-D-13830.



DATE	BY	APP.	DESCRIPTION

UNLESS OTHERWISE SPECIFIED:  
 • INTERPRET THIS DRAWING IN ACCORDANCE WITH THE FIRST ANGLE SYSTEM.  
 • DIMENSIONS ARE IN INCHES UNLESS OTHERWISE SPECIFIED.  
 • DECIMALS ARE TO BE ROUNDED UP TO THE NEXT HIGHER DECIMAL PLACE.  
 • TOLERANCES ARE TO BE AS SHOWN.  
 • FINISHES ARE TO BE AS SHOWN.  
 • SURFACE QUALITY IS TO BE AS SHOWN.  
 • UNLESS OTHERWISE SPECIFIED, ALL DIMENSIONS ARE TO BE IN INCHES.  
 • UNLESS OTHERWISE SPECIFIED, ALL DIMENSIONS ARE TO BE IN INCHES.  
 • UNLESS OTHERWISE SPECIFIED, ALL DIMENSIONS ARE TO BE IN INCHES.

NEGATIVE ELEMENT  
 SIZE: E 09344  
 DRAWING NO: 104216  
 SHEET 1 OF 1