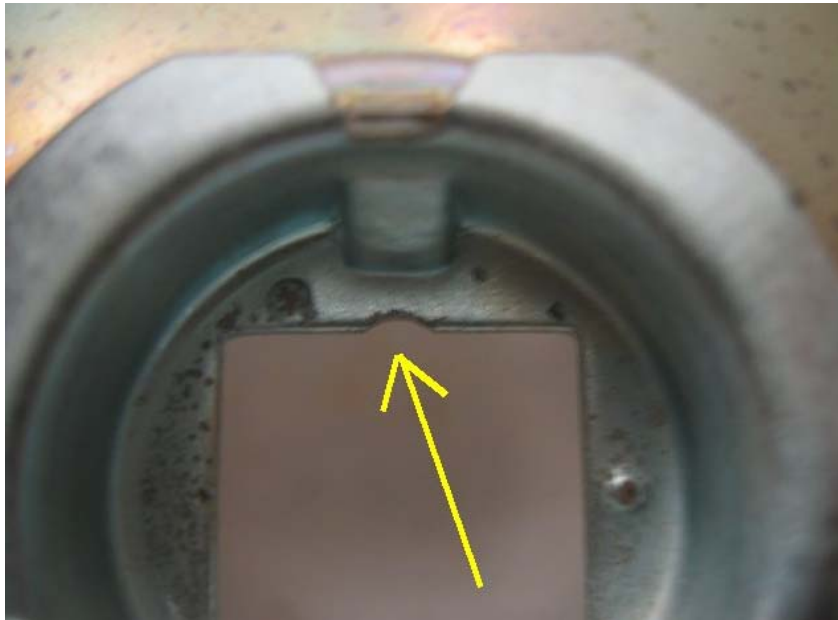


IPF 800 HID install



Undo the two side screws and remove the front housing.
Remove the old Halogen bulb.
Insert the H3 HID bulb taking care not to touch the bulb with your fingers.
I'd advise to whack a bit of wire on the pins to lock them together.





A notch may need to be filed depending on the type of HID bulb. Use a small file to do the job.



If your bulbs came with rubber grommets already installed on the leads, depending on the size drill the required size hole in the rear of the IPF housing. The above piccy will need a $\frac{3}{4}$ inch hole. The waterproof plugs will pass through a $\frac{3}{4}$ inch hole fine. Apply silicon sealant around the wires and the grommet. Try and do a nicer job than I did. The position of the arc in the H3

