

# Internet Cafe Notes

## Requirements:

### Manager's workstation:

Manager's PC will be used by the person running the NetCafe, it will have all internet and gaming capabilities along with accounting database, Office productivity suite, image manipulation (scanning and editing), and CD burning computer. It will also act as a file and print server. NetCafe users will NOT be authorized to download files to their local computers, instead, all files will be downloaded to a shared directory on the Manager's PC associated with the user's computer (10 shared directories for 10 computers), in which the downloaded files will be checked for viruses, and then loaded onto Floppy or CD-ROM upon user's request in exchange for the proper charge. Users will be charged for printing based on the document contents (text, black/white graphics, color graphics).

### Hardware:

1 Workstation with the following specifications:

Processor Pentium 3-4 1.0+ GHZ with 133 MHZ bus motherboard.

256 MB RAM.

1 14.4MB Floppy drive.

20-40 GB hard drive.

1 CD-ROM drive

1 CDR/CDRW drive.

1 16 bit sound adapter.

1 DirectX and GL/OpenGL compatible VGA adapter with 32 MB+ memory and fast graphics processor.

1 10/100 BaseTX Network Interface Card (NIC), along with cable.

14-15" CRT display.

1 keyboard, 1 mouse.

2 small speakers (stereo) and 1 one mic, or 1 headset (headphone + mic).

1 high resolution, high Paper Per Minute (PPM) color printer.

1 high resolution scanner.

1 low cost UPS that is capable of 5-15 minutes of power backup for at least one workstation.

### Software:

Operating system with license (Windows 95/98/ME/XP/2000).

Office suite (Microsoft Office2000/XP or StarOffice 5.1/5.2). Word processor and database programs are essential.

Anti-Virus software (Mcafee, Norton...).

Image Manipulation program (Paint shop Pro, GNU GIMP, etc...).

### **10 Internet and Gaming stations:**

Internet and gaming stations will be used for web surfing or other internet activity (chat, ftp , email, etc...), or it will be used for single or multiplayer gaming.

Users are granted access only to those activities on these computers, no operating system manipulation is allowed, no software installation is allowed, and only one network shared drive is accessible with (read/write and NO execute privileges) for download purposes only.

### **Hardware:**

Processor Pentium 3-4 1.0+ GHZ with 133 MHZ bus motherboard.

256 MB RAM.

1 14.4MB Floppy drive.

20-40 GB hard drive.

1 16 bit sound adapter.

1 DirectX and GL/OpenGL compatible VGA adapter with 32 MB+ memory and fast graphics processor.

1 10/100 BaseTX Network Interface Card (NIC), along with cables.

14-15" CRT display.

1 keyboard, 1 mouse.

2 small speakers (stereo) and 1 one mic, or 1 headset (headphone + mic).

### **Software:**

Operating system with license (Windows 95/98/ME/XP/2000).

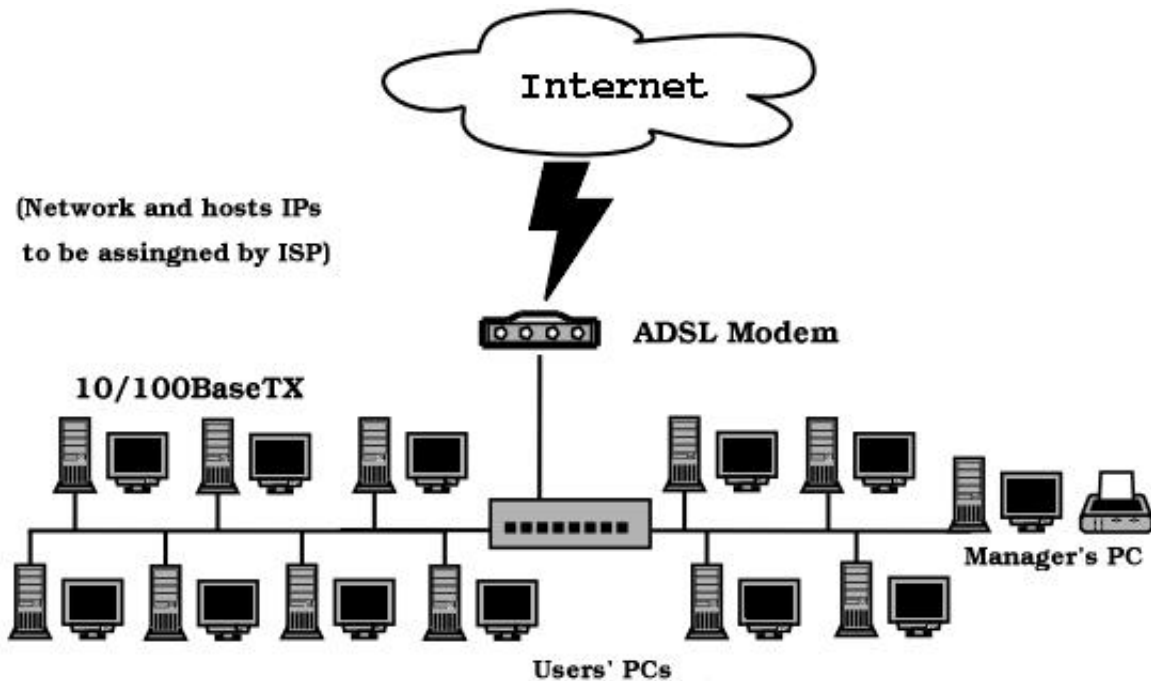
Internet chat and messaging software (MSN, YAHOO, ICQ, IRC).

Internet Browsers (Netscape , MS Internet Explorer).

Ftp, Telnet, E-Mail, clients Peer-to-Peer file sharing (Napster, KAZZA, FreeWire, etc...) clients.

Multiplayer 3D action and strategy games (Quake 3, Half-Life, etc...).

## Local network and Internet:



Network and hosts IP addresses will be assigned by the Internet Service Provider (ISP) as part of the lease.

### Protocols:

10/100 BaseTX Ethernet for Local Area Network (LAN).

Asymmetric Digital Subscriber Line (ADSL) for Wide Area Network (WAN) connectivity.

All computers must run:

TCP/IP

NetBIOS (NetBEUI) for file and printer sharing.

Client for Microsoft networks.

### Hardware:

1 12-16 port 10/100 BaseTX hub (3COM recommended).

1 ADSL Modem with Ethernet interface.

### Lease:

Renewable 3-6 Months to 1 year ADSL subscription.

10-12 Internet Registered IP addresses.

**General notes:**

Power settings on all user's computers should be optimal for power savings when not in use. (turn off monitors after 10 minutes, computer standby after 15).

3C905-TX-M NICs could be used to boot diskless clients from a linux TFTP server which also provide storage for clients through a SAMBA share on the Manger's computer. This can reduce costs per PC by eliminating the need for a hard drive for each PC. 2 CD-ROMs can be shared on the file server.