

(*)

/

:

()

- -

()

(Fuchs,2002&GEARY,O.T.& De la paz ,1995) %

(Siegole,1982,74) %

() %

% . () %

*مدرس المناهج وطرق تدريس الرياضيات كلية التربية بدمياط- جامعة المنصورة

:

:

- 1

()

)

()

:

(

(

.% ,

)

(

(

(, -)

()

%

%

-

-

-

()

()

()

() C.A.R

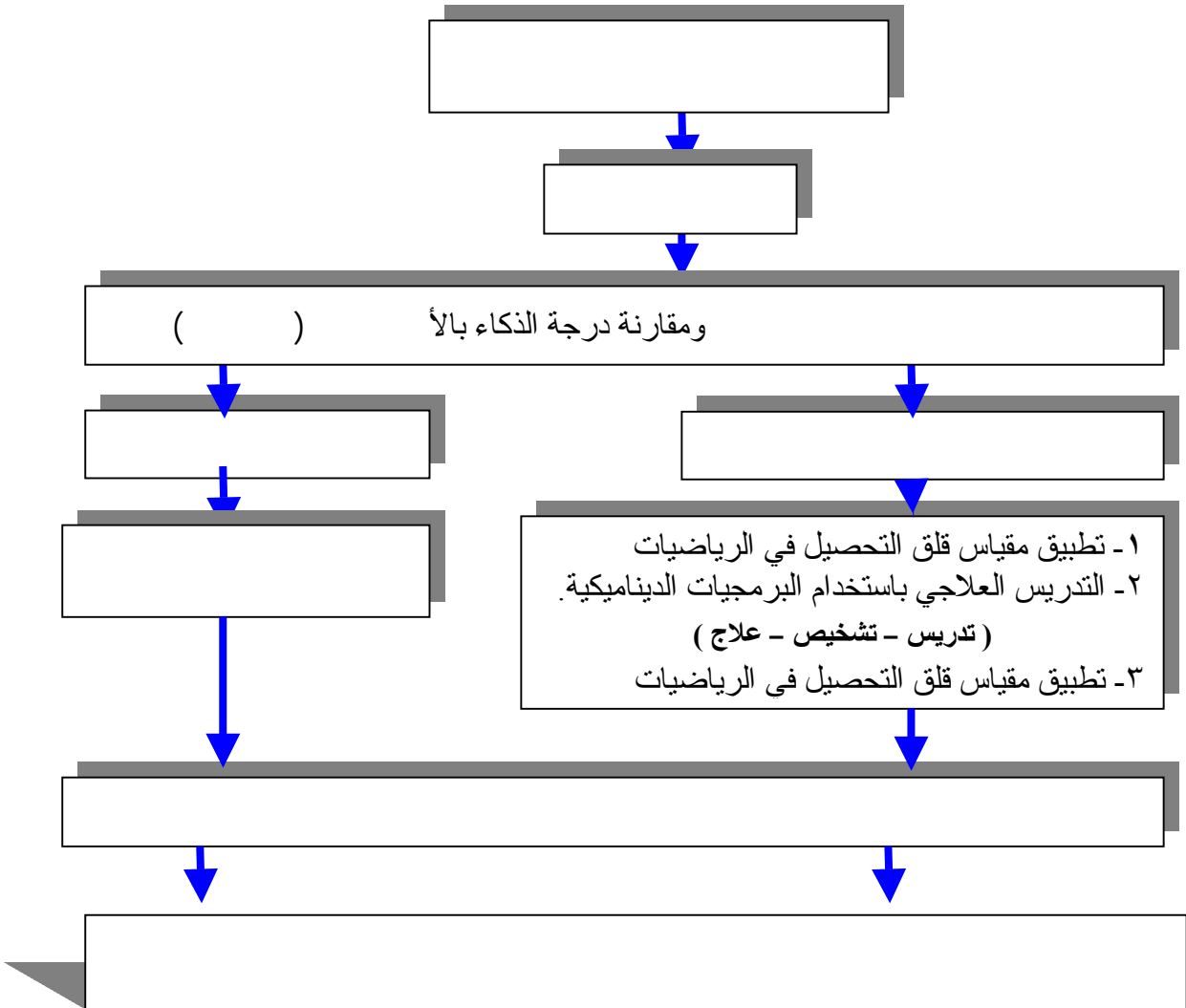
post-

...

)

" test control group

(



⁽⁴⁾ (NACHC)

⁽⁵⁾(NJCLD)

:

NACHC)

"

(Aphasia)

(Dyslexia)

. (Radencich,1987,34)

"

"

"

⁽⁶⁾ (CEC)

"

()

(DCLD)

Sensory processes

Integrative

Specific

(Hammill, 1990 , 76)

(NACHC

(-)

"

4 National Advisory Committee of Handicapped Children

5 National Joint Committee for Learning Disabilities

6 Council for Exceptional of Children

7 A Committee of the Division Children With Learning Disabilities

. (Jean,1992) "

. :
()

"

"

(NJCLD)

"

.(Kavale,1987,6&Hammill,1990,78) "

"

"

* (ACLD)

"

) "

.(

()

"

"

" ()

"

" ()

"

:

•

•

•

()

•

•

-

-

•

"Kirk "

)

:
:(
: Developmental LD

:
:
:
:Academic LD

()

(Geary ,O.T.)

.(Garnett,1992)

(Miller ,1997 ,34)

(Jones ,1997)

: (Chaman,1988)

-
-

learning Factors

Attributes of LD

:

: Attributes of LD

:

. (Parmar&cawley,1991)

:)

.(

. (Bottage ,2001)

:Information-Processing Factors

:

(Bos &

.Vaughn,1994)

)

Perception

Sensation

Attention .

:

.(

Long-term memo

Short-term memory

. Response

: (Miller&Marcer,1997)

: Attention deficits

-

-
-

: Memory problems

-

-
-
-

:Visual - spatial deficits -

. () () ()

.(-) (-)

:Auditory-processing difficulties -

:Motor Disabilities -

.()

Cognitive and Metacognitive Characteristics:

.(Brownell ; Mellard & Deshler ,1993)

- (Kulak,1993) -

(:)

-
-
-
-
-
-
-
-
-
-
-
-
-
-
-

: Language Disabilities :

:

:

.

.

)

(

.

:

(International Dyslexia Association ,1998)

.

Social and Emotional Characteristics : :

self - esteem

Emotional passivity

. (Miller&Marcer,1997)

: ()

-

-

" ()

.

()

.

" ()

"

:

()

:()

•

•

•

•

•

•

•

:

()

-

-

& - ())

:(-

•

•

•

•

•

: ()
Discrepancy Criterion -

:
:
(Dadour ,1998)

(Hallaham & Kauffman , 1988:103) :

-
-
-
-
-
-

- -
Exclusion Criterion -

: (Kaval ,et al, 1987 :11-12)" "

(IQ=100)
% %

Maturation :

Neurology :

)." "

. (:

: ()

:

- -

()

:

)

:(

-
-
-
-
-
-
-
-

:

:

-(Salisbury,1993)

-
-
-
-

)

:(

.(Psychological Process)

()

Ability Training

/

/

.(Task Analysis)

()

Skill

Training

/ + /

()

Corrective Teaching

- : Child Analysis •
- : Task Analysis •

: Integration of Child and Task •

Remedial Teaching:

()

(GOOD,1973,590)

(Whitcraft 1980: 51)

()

:

- -
- -

- -

()

:

•

•

•

•

•

•

•

•

()

:

: Practical Approach

-

"

()

"

()

()

()

(Giordano ,1990)

(Kazuyoshi, 1994)

(Show ,1990)

Individualize Learning

-

()

()

(Hughes,& Maccini,1997 :155-168)

()

(Okolo , 1993)

(

(Witzel , 2002)

/(+)

(- :)

(Parmar ,1997)

: Problem Solving Approach

(Liedtke ,1982)

(Thornton ,et al ., 1997)

: (Lock ,1996)

-
-
-
-
-

:()

-

"

(Slavin, 1983)

"

(Revera,1996)

:

:

:

:

:

-

-

-

/

-

:

: ()
Tarman & Lorg " " " "

)
-)
,

(
(:

:

-

:

()

(Scott)

()

()

()

:

()

•

•

•

()

:

:

)

()

()

(

()

:

(,)

"

"

:

()

()

()

(⁸)

: -

:

: ()

() .

: ()

()

(-)

: ()

: ()

()

()

: ()

()

()

()

: ()

: ()

: *

.
: *

: *

, - ,

: *

) Johnson " , - ,

(

: *

, : " "{∞}" "

:

) (,)

(,

. ()

: -

() :

.() ()

(- -) -) (-)
(- -) (- -)

:() ()

()

- - - - -	
- - - - -	
- - - - -	

:

(- -)
:() ()
.(%) - :
.(% %) - :
.(%) - :

(% ,)

()

()

: -

.()

SPSS

()

		U							
				'	'	'	'		
				'	'	'	'		

()

()

()

:

:

:

-

()

(- -)

()

)

(C.A.R) Compass and Ruler

()

(

)

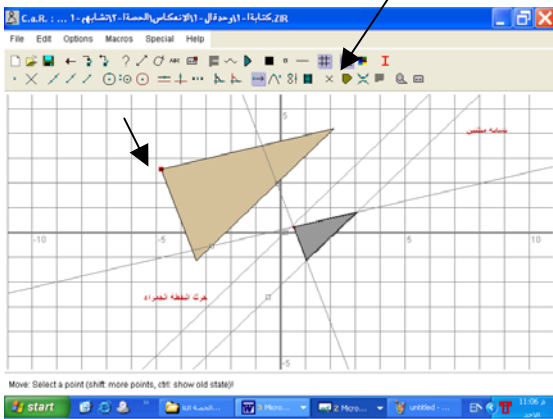
(

)

(

()

()



()

:

-

-

-

:-

:

()

-

-

()

:

()

()

()

DATA SHOW

)

:

.(

()

•

:

-

:

-

:

-

() •
 : -
 : -
 : -
 ()
 ()

:SPSS

:

SPSS

.()

()

	[*] U				

()

SPSS

:

()

-

	**								
	Z								
,	, -		,	,	,	,	,		

()

()

(,)

(,) ()

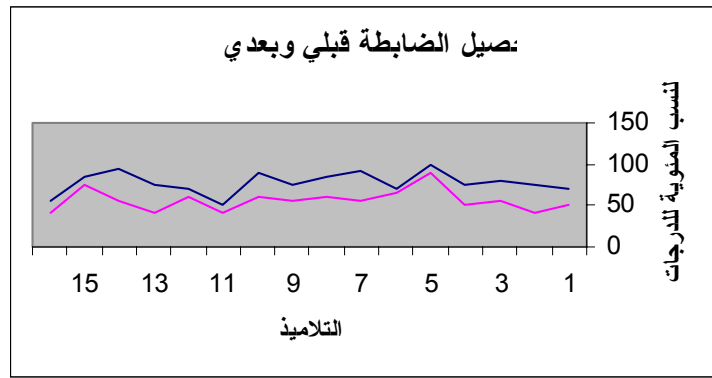
(,)

Kolmogorov - Smirnov Test **

(+) / = (η^2) **

()

($\eta^2 -$) / $\eta^2 =$



:

(

(,) (η^2)

%

(

()

:

-

-

-

-

-

-

-

-

-

:()

-

:()

:

:()

:()

:()

-

()

:()

-

()

:()

"

"

()

:()

:()

()

:()

-

:()

:()

-

()

:()

()()

:()

()()

:()

() () . ()

) . ()

() ()

. ()

)

(

. ()

- ()

() . ()

. ()

()

V

. ()

. ()

() . ()

. ()

()

. () -

: () . () .

. ()

. ()

. ()

V

. ()

- Bottage, B. A. & Hasselbring, T. S. (1993). Comparison of Two Approaches for Teaching Complex, Authentic Mathematics Problem to Adolescents in Remedial Mathematics Classes. *Exceptional Children*, 59(6), 556 – 566, May
- Bottage, B. A. (2001). Reconceptualizing Mathematics Problem Solving for Low-Achieving Students, *Remedial and Special Education*. 22(2), 102 –112 , Mar / Apr.
- Bottage, B. A. & Watson, E. A. (2002). Using Video – Based Math Problem to Confront the Skills and Understandings of Incarcerated Adults With Disabilities. *Journal of Special Education Technology*, 17(2), 25 –38.
- Boudah, D. J. & Weiss, M.P. (2002). Learning Disabilities Overview. ED 462808. Available From: <http://searcher.eric.org/digests/ED462808>.
- Brownell, M. T.; Mellard, D. F. & Deshler, D. D. (1993). Differences in Learning and Transfer Performances between Students with Learning Disabilities and Other Low Achieving Students on Problem – Solving Tasks. *Learning Disability Quarterly*, 16, 138-156.
- Chapman, J. (1988). Learning Disabilities Children's Self-concepts. *Review of Education Research*. 58, 347-371.
- Dadour, E.L. (1998) The effectiveness of a tapestry-based program on developing L2 writing productivity of overly perfectionistic students. *proceeding of the 18th CDET national symposium, Ain Shams University, March 24-26*
- De La Paz, S. & Graham, S. (1995) Screening for Special Diagnosis. ERIC, ED389965, Available From: <http://searcher.eric.org/digest/ed389965.html>.
- Englert, C. S.; Culatta, B. E. & Horn, D. G. (1987). Influence of Irrelevant Information in Addition Word Problem on Problem Solving, *Learning Disability Quarterly*, 10, 29-36.
- Fuchs, S. L. & Fuchs, D. (2002). Mathematical Problem – Solving Profiles of Students with Mathematics Disabilities with and without Comorbid Reading Disabilities. *Journal of Learning Disabilities*. 6(35), Nov./Dec., 563-573.
- Garnett, K. (1992). Developing Fluency with Basic Number Facts: Intervention for Students with Learning Disabilities. *Learning Disabilities, Research & Practices*, 7, 210 – 216.
- Geary, D.C. Mathematical Disabilities: What We Know and Don't Know, Available From: http://www.ldonline.org/LD_indepth/math_skills/geary_math_dis.html
- Giordano, Gerard. (1990). Strategies that Help Learning Disabled Students Solve Verbal Mathematical Problem Preventing School Failure. 35(1), 24- 28.
- Good, C.V. (1973). *dictionary of Education*. 3rd.ed. New York, Mc Graw-Hill Book Co.
- Hammill, D.D. (1990). On Defining Learning Disabilities: An Emerging consensus. *Journal of Learning Disabilities*, 23(2), Feb., 74-84.
- Higgins, K.; Boone, R. & Lovitt, T. C. (1996). Hypertext Support for Remedial Student with Learning Disabilities. *Journal of Learning Disabilities*, 29(4), 402 – 412.
- Hughes, C. A. & Maccini, P. (1997). Computer - Assisted Mathematics Instruction for Students With Learning Disabilities: Research Review, *Learning Disabilities Multidisciplinary Journal*, 8(3), 155- 168.
- International Dyslexia Association (1998). Mathematics and Dyslexia Available form: http://www.ldonline.org/ld_indepth/math_skills/ida_math_fall98
- Jean, L. (1992). Learning Disabilities, ERIC, ED 352779, Available From: <http://searcher.eric.org/digest/ed352779.html>.
- Jones, R.W. (1997). Mathematics Instruction for Secondary School with Learning Disabilities. *Journal of Learning Disabilities*, 30(2), 151-163.
- Hallahan, D.P. & Kauffman, J.M. (1988). *Exceptional children: Introduction to Special Education*. 4th.ed., London, printice-Hall International Inc.
- Kavale, K. A.; Fones, S. R. & Bender, M. (1987). *Handbook of Learning disability*. V.1, Dimension and Diagnosis, London, Taylor & Francis, LTC.

- Kazuyoshi, H. (1994). A laboratory for Learning and Teaching 3D Geometry. ERIC, ED396674. Available from: <http://searcher.eric.org/digest/ED396674.html>.
- Keup, J. R. (1998). Using Technology in Remedial Education. ED421180, Available from: <http://searcher.eric.org/digest/ED421180.html>.
- Kulak, A. G. (1993). Parallels between Math and Reading Disability: Common Issues and Approaches. *Journal of Learning Disabilities*, 26, 666-673.
- Liedtke, W. (1982). Learning Difficulties: Helping Young Children With Math Subtraction, *Arithmetic Teacher*, 30(4).
- Lock, R. H. (1996). Adapting Mathematics Instruction in the General Education Classroom for Students with Learning Disabilities, LD Forum: Council for Learning Disabilities, Available From: http://www.ldonline.org/ld_indepth/math_skills/adapt_cld.html
- Miller, S.P. & Mercer, C.D. (1997). Educational Aspects of Mathematics Disabilities, *Journal of Learning Disabilities*, 30(1), 47-56 Jan./Feb.
- Okolo, C. M.; Bahr, C. M. & Reith, H. J. (1993). A retrospective View of Computer-Based Instruction, *Journal of Special Education Technology*, 12(1), 1-27.
- Parmar, R. S. & Cawley, J. F. (1991). Challenging the Routines and Passivity That Characterize Arithmetic Instruction for Children with Mild Handicaps, *Remedial and Special Education*, 12(5), 23-32.
- Parmar, R. S. & Cawley, J. F. (1997). Preparing Teacher to Teach Mathematics to Students with Learning Disabilities. *Journal of Learning Disabilities*, 30(2), 182-197.
- Radencich, M.C. (1987). The learning Disabilities Paradigm, In: Kavale, K. A.; Fones, S. R. & Bender, M. *Handbook of Learning Disability*, vol. 1, dimension and diagnosis, London, Taylor & Francis LTC.
- Revera, D. P. (1996). Using Cooperative Learning to Teach Mathematics to Student with Learning Disabilities. LD Forum: Council for Learning Disabilities. Available from: http://www.ldonline.org/ld_indepth/math_skills/coopmath.html
- Salisbury, C. L. & Smith, B. J. (1993). Effective Practices for Preparing Young Children with Disabilities for School. ED358675, Available from: <http://searcher.eric.org/digest/ED358675.html>.
- Show, J.M. (1990). Exploring Mathematics: Activities for Concept and Skill Development. Kindergarten-Grade3 ERIC, ED309999, Available from: <http://searcher.eric.org/digest/ED309999.html>
- Siegele, C. & Gold, R. F. (1982). *Educating The Learning Disabled*. New York, Macmillan Publishing co., Inc.
- Slavin, R. E. (1983). When Does Cooperative Learning Increase Student Achievement?. *Psychological Bulletin*, 94, 429-445.
- Thornton, C. A., et. al. (1997). Mathematics Instruction for Elementary Students with Learning Disabilities. *Journal of Learning Disabilities*, 30(2), 142-150.
- Witzel, B.; Smith, S. W. & Brownell, M. T. (2001). How Can I Help Student With Learning Disabilities in Algebra? *Intervention in School and Clinic*, 37(2), 101-104.