



# Norton Ghost

*Reduces PC roll out or upgrade time by 90 percent or more*

Norton Ghost™ makes it easy to install disk images on many PCs simultaneously. With an intuitive graphical user interface, Norton Ghost speeds and simplifies the disk cloning process, greatly easing the task of rolling out or upgrading PCs in a corporate environment. Norton Ghost reduces, by 90 percent or more, the time required to roll out new PCs and upgrade current PCs, lowering costs and increasing confidence that the initial PC configuration will work. Norton Ghost maximizes user productivity by rapidly delivering new PCs, upgrades, or restoration while greatly reducing IT workload.

## Minimize installation time for new operating systems

Norton Ghost slashes operating-system installation time in single or multi-platform and even multi-operating system environments, providing support for Windows® 95, Windows 98, Windows NT®, and OS/2. Assuming the manual installation of a PC's operating system and applications takes two hours, an IT manager would need to devote 125 days—or three people full time for two months—to roll out 500 PCs. Using Norton Ghost, the same job can typically be completed in one or two days, for an impressive productivity boost and a significant reduction in the total cost of PC ownership.

Norton Ghost is the clear leader in disk cloning, installed on more than 3.5 million workstations and used by more than half of all Fortune 500 companies.

## Install simultaneously on hundreds—or thousands—of PCs

With the multicasting feature built into Norton Ghost, many PCs can be cloned at the same time. Instead of installing each PC image individually, multicasting uses TCP/IP broadcasting to send an image to any number of PCs concurrently.

The multicasting capability minimizes impact on network bandwidth and maximizes image storage options. Moreover, because image files can be compressed up to 70 percent, storage requirements and transfer times are reduced even more.

- Clones any drive to a new hard drive
- Allows simultaneous cloning of any number of PCs
- Makes complete backup of system files
- Dynamically assigns security identifiers on Windows NT systems
- Supports multiple platforms

## System Requirements

- DOS 5.0 or later
- 80386SX processor (80486 recommended)
- 8 MB RAM (16 MB for NTFS)
- 256-color VGA
- No pointing device required (Microsoft mouse recommended)

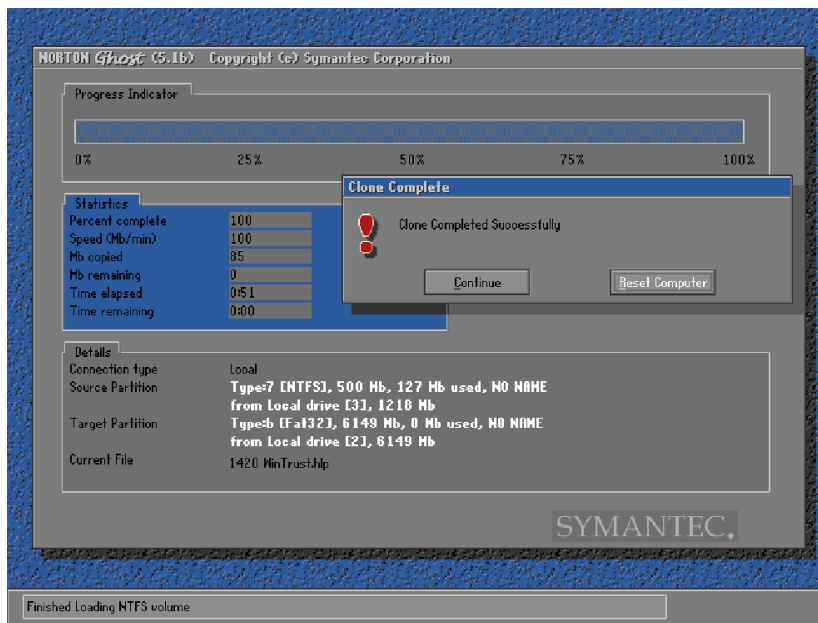
## World Headquarters

Symantec Corporation  
10201 Torre Avenue  
Cupertino, CA 95014 USA  
1-800-441-7234  
1-541-334-6054

[www.symantec.com](http://www.symantec.com)

Australia (Sydney): +61 2 9850 1000  
Australia (Melbourne): +61 3 9823 6204  
Brazil: +55 11 530 8869  
Canada: 1(416) 441-3676  
France: +33 1 41 38 5700  
Germany: +49 2102 7453 0  
Hong Kong: +852 2528 6206  
Italy: +39 2 69 5521  
Ireland: +353 1 820 5060  
Japan: +81 3 3476 1156  
Korea: +82 2 3452 1600  
Malaysia: +60 3 7567662  
Mexico: +52 5 661 7978  
New Zealand: +64 9 309 5620  
Netherlands: +31 71 535 3111  
Russia: +7095 238 3822  
Singapore: +65 239 2000  
Sweden: +46 8 457 3400  
Switzerland: +41 71 626 20 40  
South Africa: +27 11 804 4670  
Taiwan: +886 2 729 9506  
UK: +44 1628 592 222

Symantec and the Symantec logo are U.S. registered trademarks of Symantec Corporation. Norton Ghost is a trademark of Symantec Corporation. Windows and Windows NT are registered trademarks of Microsoft Corporation. Other brands and products are trademarks of their respective holder/s.  
©1998 Symantec Corporation.  
All Rights Reserved. Printed in the U.S.A.  
10/98 07-71-00917



*Norton Ghost features an intuitive graphical interface that makes it easy to install disk images to many PCs simultaneously.*

## Avoid the trouble of formatting or partitioning individual disks

Because Norton Ghost will automatically partition and format the disk as the image is written to it, target disks are ready for cloning with *no time-consuming preparation work*. Norton Ghost uses Ghost Walker to dynamically assign a unique security identifier (SID) to each Windows NT system as the image is cloned, ensuring that the cloned image file is accurate and that each cloned PC will work correctly. And running in batch mode, Norton Ghost can clone a workstation without user intervention.

## Quickly back up or restore an entire disk

Norton Ghost can also be used to back up an entire disk—even “in-use” system files that other backup utilities miss—or to recover a hard drive or individual files or directories after failure or user error.

## Norton Ghost Utilities

- Ghost Walker—resolves the problem of duplicate Security Identifiers on cloned Windows NT PCs
- Ghost Explorer—enables individual files and/or directories to be restored from an image file
- GDISK—eliminates the need to use FDISK, reducing the time required to configure a disk's partition table



**SYMANTEC.**™