

UNDERNET #XxXCrackers Cracking Tutorials

XFACTOR.....

This by no means is meant to be the definitive Tutorial on the workings of XFactor and Geowhere, but an easy to follow first step for newbies in there first foray into the wonderful world of cracking.

FIRST THINGS FIRST.....

For the purposes of this document we will be using 2 pieces of software....

- 1) Geowhere <http://www.xisp.org/downloads/geowhere.zip>
- 2) XFactor <http://www.xisp.org/xfactor.htm>
- 3) Wordlist <http://www.xisp.org/downloads/wordlist.zip>

Plz download these from the above-mentioned url's...

GEOWHERE

Fig. 1

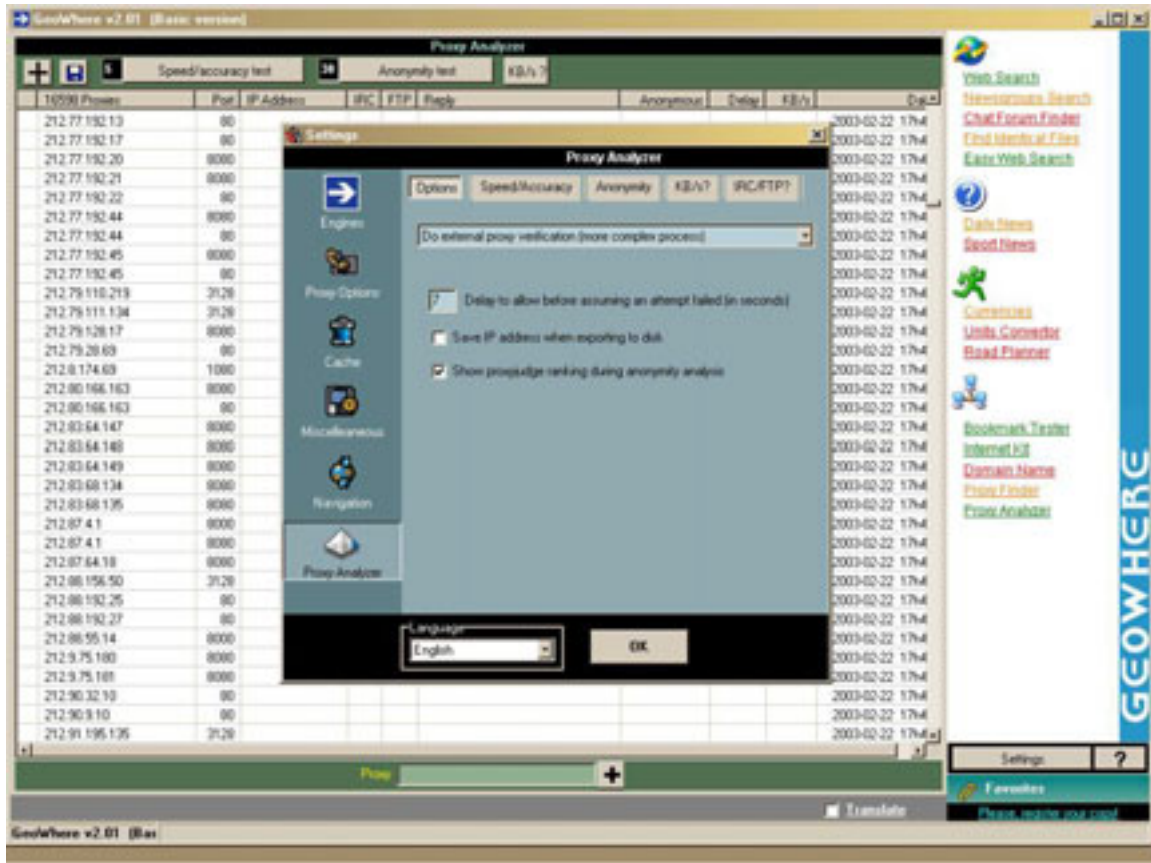


Fig. 2

GeoWhere v2.01 (Basic version)

Proxy Analyzer

Speed/accuracy test Anonymity test KB/s ?

10000 Proxies	Pos	IP Address	IPC	FTP	Reply	Anonymous	Delay	KB/s	OK
202.26.95.5	80	202.26.95.5			Gateway to 203.96.111.237	Level4	1582		2003-04-10 14:05
202.31.95.2	80	202.31.95.2			Gateway to 203.96.111.237	Level3	708		2003-04-10 14:05
202.66.109.210	80	202.66.109.210			Gateway to 210.54.247.221	Level4	581		2003-04-10 14:05
202.96.116.69	80	202.96.116.69			Gateway to 203.96.111.237	Level4	741		2003-04-10 14:05
202.96.116.73	80	202.96.116.73			Gateway to 203.96.111.237	Level4	741		2003-04-10 14:05
202.96.184.34	80	202.96.184.34			Gateway to 210.54.247.221	Level4	604		2003-04-10 14:05
203.122.29.195	80	203.122.29.195			Gateway to 203.96.111.237	Level4	621		2003-04-10 14:05
203.143.16.138	80	203.143.16.138			Gateway to 202.27.176.197	Level4	380		2003-04-10 14:05
203.179.2.3	80	203.179.2.3			Gateway to 210.54.247.221	Level4	3525		2003-04-10 14:05
203.199.37.6	80	203.199.37.6			Gateway to 210.54.247.221	Level4	601		2003-04-10 14:05
203.20.76.3	80	203.20.76.3			Gateway to 210.54.247.221	Level3	600		2003-04-10 14:05
203.23.72.2	80	203.23.72.2			Gateway to 210.54.247.221	Level4	1222		2003-04-10 14:05
203.234.17.49	80	203.234.17.49			Gateway to 210.54.247.221	Level4	581		2003-04-10 14:05
203.34.233.26	80	203.34.233.26			Gateway to 203.96.111.237	Level4	3525		2003-04-10 14:05
203.36.132.4	80	203.36.132.4			Gateway to 210.54.247.221	Level4	601		2003-04-10 14:05
203.38.41.6	80	203.38.41.6			Gateway to 210.54.247.221	Level4	581		2003-04-10 14:05
203.38.54.180	80	203.38.54.180			Gateway to 210.54.247.221	Level4	638		2003-04-10 14:05
203.41.76.5	80	203.41.76.5			Gateway to 203.96.111.237	Level3	1242		2003-04-10 14:05
203.44.117.129	80	203.44.117.129			Gateway to 210.54.247.221	Level4	601		2003-04-10 14:05
203.44.96.195	80	203.44.96.195			Gateway to 203.96.111.237	Level4	641		2003-04-10 14:05
203.53.209.66	80	203.53.209.66			Gateway to 210.54.247.221	Level3	621		2003-04-10 14:05
203.6.129.17	80	203.6.129.17			Gateway to 210.54.247.221	Level4	3525		2003-04-10 14:05
203.87.23.7	80	203.87.23.7			Gateway to 210.54.247.221	Level4	601		2003-04-10 14:05
203.9.95.1	80	203.9.95.1			Gateway to 210.54.247.221	Level3	3525		2003-04-10 14:05
203.93.37.248	80	203.93.37.248			Gateway to 210.54.247.221	Level4	2545		2003-04-10 14:05
203.96.90.52	80	203.96.90.52			Gateway to 210.54.247.221	Level4	641		2003-04-10 14:05
204.102.261.39	80	204.102.261.39			Gateway to 210.54.247.221	Level3	671		2003-04-10 14:05
204.143.14.66	80	204.143.14.66			Gateway to 210.54.247.221	Level4	721		2003-04-10 14:05
204.184.252.121	80	204.184.252.121			Gateway to 210.54.247.221	Level4	701		2003-04-10 14:05
204.196.116.149	80	204.196.116.149			Gateway to 203.96.111.237	Level4	681		2003-04-10 14:05
204.196.120.50	80	204.196.120.50			Gateway to 202.27.176.197	Level4	281		2003-04-10 14:05
204.202.202.73	80	204.202.202.73			Gateway to 202.27.176.197	Level3	300		2003-04-10 14:05
204.211.154.141	80	204.211.154.141			Gateway to 210.54.247.221	Level4	3505		2003-04-10 14:05

GeoWhere v2.01 (Basic version)

Settings ?

Favorites

Please register your email

GEOWHERE

Fig. 3

GeoWhere v2.01 (Basic version)

Proxy Analyzer

Speed/accuracy test Anonymity test KB/s

IP/Port	Port	IP Address	HTTP	FTP	Reply	Anonymous	Delay	KB/s	Op.k
202.28.95.5	80	202.28.95.5			Gateway to 203.96.111.237	Level=4	1582	2003-04-10 14:42	
202.31.55.2	80	202.31.55.2			Gateway to 203.96.111.237	Level=3	701	2003-04-10 14:42	
202.66.101.210	80	202.66.101.210			Gateway to 210.54.247.221	Level=4	581	2003-04-10 14:42	
202.96.116.69	80	202.96.116.69			Gateway to 203.96.111.237	Level=4	741	2003-04-10 14:42	
202.96.116.73	80	202.96.116.73			Gateway to 203.96.111.237	Level=4	741	2003-04-10 14:42	
202.96.184.34	80	202.96.184.34			Gateway to 210.54.247.221	Level=4	601	2003-04-10 14:42	
203.122.21.155	80	203.122.21.155			Gateway to 203.96.111.237	Level=4	821	2003-04-10 14:42	
203.143.16.138	80	203.143.16.138			Gateway to 202.27.176.157	Level=4	380	2003-04-10 14:42	
203.179.2.3	80	203.179.2.3			Gateway to 210.54.247.221	Level=4	3525	2003-04-10 14:42	
203.199.37.6	80	203.199.37.6			Gateway to 210.54.247.221	Level=4	681	2003-04-10 14:42	
203.20.76.3	80	203.20.76.3			Gateway to 210.54.247.221	Level=3	600	2003-04-10 14:42	
203.23.72.2	80	203.23.72.2			Gateway to 210.54.247.221	Level=4	1222	2003-04-10 14:42	
203.234.17.49	80	203.234.17.49			Gateway to 210.54.247.221	Level=4	581	2003-04-10 14:42	
203.34.203.26	80	203.34.203.26			Gateway to 203.96.111.237	Level=4	701	2003-04-10 14:42	
203.36.132.4	80	203.36.132.4			Gateway to 210.54.247.221	Level=4	701	2003-04-10 14:42	
203.38.41.6	80	203.38.41.6			Gateway to 210.54.247.221	Level=4	701	2003-04-10 14:42	
203.38.54.180	80	203.38.54.180			Gateway to 210.54.247.221	Level=4	701	2003-04-10 14:42	
203.41.76.5	80	203.41.76.5			Gateway to 203.96.111.237	Level=4	701	2003-04-10 14:42	
203.44.117.129	80	203.44.117.129			Gateway to 210.54.247.221	Level=4	701	2003-04-10 14:42	
203.44.96.195	80	203.44.96.195			Gateway to 203.96.111.237	Level=4	701	2003-04-10 14:42	
203.53.209.66	80	203.53.209.66			Gateway to 210.54.247.221	Level=4	701	2003-04-10 14:42	
203.6.129.17	80	203.6.129.17			Gateway to 210.54.247.221	Level=4	701	2003-04-10 14:42	
203.87.23.7	80	203.87.23.7			Gateway to 210.54.247.221	Level=4	701	2003-04-10 14:42	
203.9.95.1	80	203.9.95.1			Gateway to 210.54.247.221	Level=4	701	2003-04-10 14:42	
203.93.37.248	80	203.93.37.248			Gateway to 210.54.247.221	Level=4	701	2003-04-10 14:42	
203.96.90.52	80	203.96.90.52			Gateway to 210.54.247.221	Level=4	701	2003-04-10 14:42	
204.101.251.39	80	204.101.251.39			Gateway to 210.54.247.221	Level=4	701	2003-04-10 14:42	
204.143.14.66	80	204.143.14.66			Gateway to 210.54.247.221	Level=4	701	2003-04-10 14:42	
204.184.252.121	80	204.184.252.121			Gateway to 210.54.247.221	Level=4	701	2003-04-10 14:42	
204.196.116.149	80	204.196.116.149			Gateway to 203.96.111.237	Level=4	681	2003-04-10 14:42	
204.196.120.50	80	204.196.120.50			Gateway to 202.27.176.157	Level=4	281	2003-04-10 14:42	
204.210.202.23	80	204.210.202.23			Gateway to 202.27.176.157	Level=3	300	2003-04-10 14:42	
204.211.143.141	80	204.211.143.141			Gateway to 202.27.176.157	Level=4	300	2003-04-10 14:42	

203.6.129.17.80

Settings ?

Translate

GeoWhere v2.01 (Basic version)

Web Search
News Search
Chat Forum Finder
Find Internet Files
Easy Web Search
Cable News
Sport News
Comics
Links Connector
Road Planner
Bookmark Tester
Internet Kit
Domain Name
Proxy Analyzer

GEOWHERE

Fig. 4

GeoWhere v2.01 (Basic version)

Proxy Analyzer

Speed/accuracy test Anonymity test KB/s

1000 Proxies	Port	IP Address	HTTP - FTP - Relay	Anonymous	Relay	KB/s	Op/s
202.26.95.5	80	202.26.95.5	Gateway to 203.96.111.237	Level4	1582	2003-04-10 1440	
202.31.95.2	80	202.31.95.2	Gateway to 203.96.111.237	Level3	709	2003-04-10 1440	
202.66.101.219	80	202.66.101.219	Gateway to 210.54.247.221	Level4	589	2003-04-10 1440	
202.96.116.69	80	202.96.116.69	Gateway to 203.96.111.237	Level4	741	2003-04-10 1440	
202.96.116.73	80	202.96.116.73	Gateway to 203.96.111.237	Level4	741	2003-04-10 1440	
202.96.194.34	80	202.96.194.34	Gateway to 210.54.247.221	Level4	605	2003-04-10 1440	
203.132.25.195	80	203.132.25.195	Gateway to 203.96.111.237	Level4	621	2003-04-10 1440	
203.143.16.138	80	203.143.16.138	Gateway to 202.27.176.197	Level4	280	2003-04-10 1440	
203.179.2.3	80	203.179.2.3	Gateway to 210.54.247.221	Level4	2529	2003-04-10 1440	
203.199.37.6	80	203.199.37.6	Gateway to 210.54.247.221	Level4	689	2003-04-10 1440	
203.20.76.3	80	203.20.76.3	Gateway to 210.54.247.221	Level3	600	2003-04-10 1440	
203.23.72.2	80	203.23.72.2	Gateway to 210.54.247.221	Level4	1222	2003-04-10 1440	
203.234.17.49	80	203.234.17.49	Gateway to 210.54.247.221	Level4	587	2003-04-10 1440	
203.34.233.26	80	203.34.233.26	Gateway to 203.96.111.237	Level4	2529	2003-04-10 1440	
203.36.132.4	80	203.36.132.4	Gateway to 210.54.247.221	Level4	605	2003-04-10 1440	
203.36.41.6	80	203.36.41.6	Gateway to 210.54.247.221	Level4	581	2003-04-10 1440	
203.36.54.180	80	203.36.54.180	Gateway to 210.54.247.221	Level4	638	2003-04-10 1440	
203.41.76.5	80	203.41.76.5	Gateway to 203.96.111.237	Level3	1242	2003-04-10 1440	
203.44.117.129	80	203.44.117.129	Gateway to 210.54.247.221	Level4	689	2003-04-10 1440	
203.44.36.195	80	203.44.36.195	Gateway to 203.96.111.237	Level4	641	2003-04-10 1440	
203.53.209.66	80	203.53.209.66	Gateway to 210.54.247.221	Level3	621	2003-04-10 1440	
203.6.129.17	80	203.6.129.17	Gateway to 210.54.247.221	Level4	3629	2003-04-10 1440	
203.87.23.7	80	203.87.23.7	Gateway to 210.54.247.221	Level4	607	2003-04-10 1440	
203.9.95.1	80	203.9.95.1	Gateway to 210.54.247.221	Level3	3629	2003-04-10 1440	
203.93.37.248	80	203.93.37.248	Gateway to 210.54.247.221	Level4	2545	2003-04-10 1440	
203.96.90.52	80	203.96.90.52	Gateway to 210.54.247.221	Level4	641	2003-04-10 1440	
204.101.251.39	80	204.101.251.39	Gateway to 210.54.247.221	Level3	671	2003-04-10 1440	
204.143.14.66	80	204.143.14.66	Gateway to 210.54.247.221	Level4	721	2003-04-10 1440	
204.194.252.121	80	204.194.252.121	Gateway to 210.54.247.221	Level4	709	2003-04-10 1440	
204.196.116.149	80	204.196.116.149	Gateway to 203.96.111.237	Level4	689	2003-04-10 1440	
204.196.120.50	80	204.196.120.50	Gateway to 202.27.176.197	Level4	281	2003-04-10 1440	
204.210.202.23	80	204.210.202.23	Gateway to 202.27.176.197	Level3	300	2003-04-10 1440	
204.711.164.141	80	204.711.164.141	Gateway to 210.54.247.221	Level4	3629	2003-04-10 1440	

GeoWhere v2.01 (Basic version)

Proxy 202.31.95.2:80

Translate

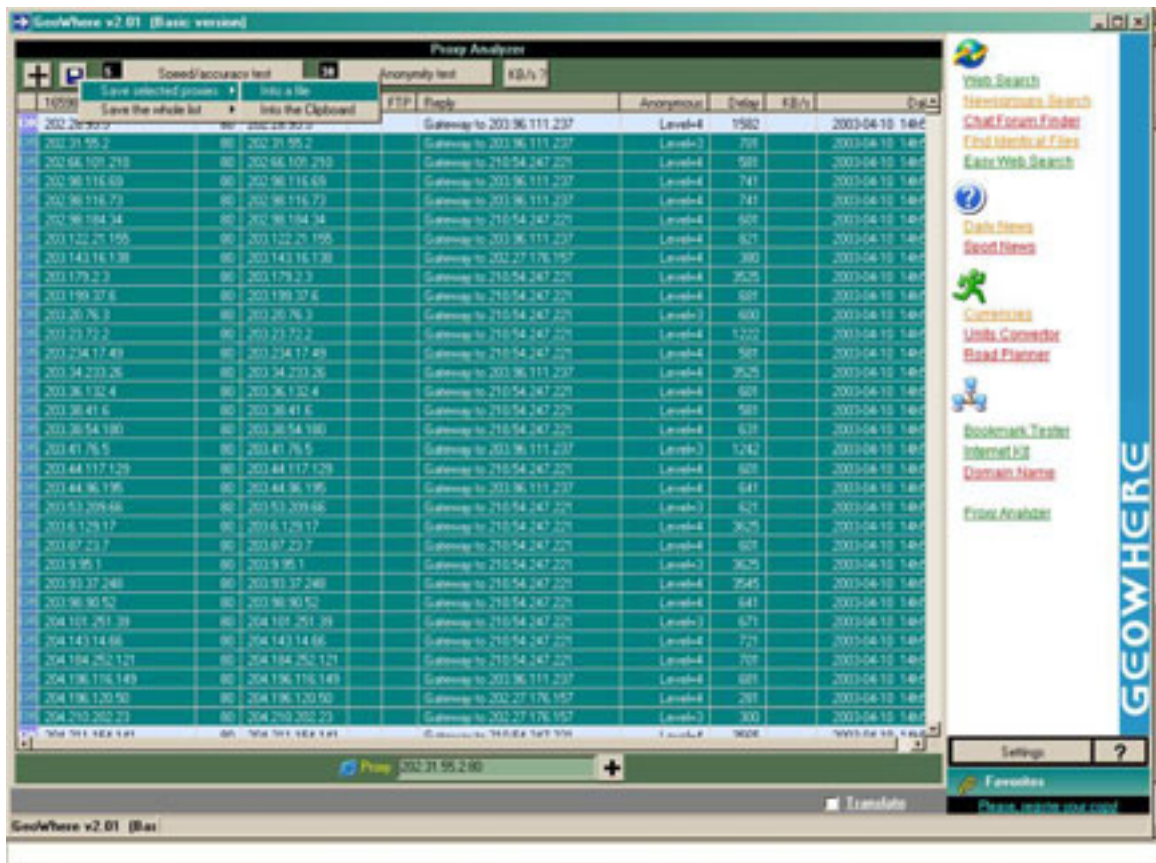
Settings ?

Favorites

Please register your proxy

GEOWHERE

Fig. 5



This is a utility that we use to collect and verify proxies...

First thing we need to do is install both piece's of software. Once this is done start Geowhere.

- 1) Choose a language from the drop down menu.
- 2) Click on Proxy Analyzer (Green txt bottom right hand corner).
- 3) Next click the Settings button. (Just under green Proxy Analyzer txt).
- 4) Select Proxy analyzer icon (see Fig1 for settings).
- 5) Click on Anonymity and select all Proxy Judges.
- 6) Ok you can now load an existing list of Proxy's or have Geowhere search for them.
- 7) To load an existing list just click on the + icon in the top left hand corner of the Geowhere window and select " Add proxies from a txt file ".
- 8) To have Geowhere search for you just select the Orange txt " Proxy Finder " in the bottom right hand corner of the Geowhere window.
- 9) Change default 1500 amount to 10000 then click " Collect Proxies From The Internet " at the top of the screen.
- 10) Once Geowhere has collected the required amount of proxies they should all be viewable in the proxy analyzer window.

- 11) Now holding down the shift key select 50 or so proxy's and click on the Speed/Accuracy Test key at the top left of the screen. (See Fig2).
- 12) Go through the same process until you have 500 or so proxy's that have been checked for speed.
- 13) Next we need to delete all the non-working Proxy's. With the mouse icon in the middle of the Geowhere screen, press the right hand mouse button. Bring the icon down until "Delete everything non-operational and not anonymous" is highlighted. (See Fig3). Left hand click on that option.
- 14) Now we start the same procedure but this time with the Anonymity Test key. (See Fig4) Remember to only select the proxy's that are left from our first speed check.
- 15) Once you have finished testing all proxy's that passed our speed test (using the same deletion process) delete all non-anon proxies.
- 16) Having done all that we now have a list of verified Proxy's, using the shift key again select all these proxy's and save to a txt file (See Fig5).

We have now finished with Geowhere.

Remember you can verify as many or as little of the collected proxy's as you like, but as a general rule the more the better.

XFACTOR Software coded by UNDERNET #XxxCrackers

Ok now to start with XFactor....

With XFactor or the matter any Bruteforce style proggie we need 3 things.

- 1) Verified Proxy list
- 2) Wordlist (in combo format). What we mean by combo format is Fred:Flinstone style of layout.
- 3) Url of site we would like to test.

Geowhere will of given you a verified proxy list as fair as a wordlist go's this is where your skills have to come into play...

Remember that any combo from any source is usable....we have included a URL for a sample wordlist in this document, this should give you an idea of the required layout.

- 1) Copy your proxy list into your XFactor directory.
- 2) On loading XFactor, after the Official XFactor logo we find the main window...
- 3) Select Brute Force from choices at bottom left hand corner of screen.
- 4) Next select proxy tab from top of screen. (See Fig6)
- 5) In this screen we need to tick "Use Proxies" at the bottom of the page.
- 6) Now right hand click mouse in middle of screen and load you list. (If you have placed you proxy list in the XFactor directory, the next time you open XFactor this will be pre selected)
- 7) Next (See Fig7) Things here to take notice of are...sites button, members url window, load pass's icon and verify list icon.
- 8) After clicking on sites we need to load the members url of the site that holds your interest.
- 9) Now click on Load pass's icon to load your wordlist.
- 10) Now all that's left is to click the Verify List. This will start checking your site with all of the combos in your wordlist. (See Fig8) for an idea of what it should look like.
- 11) Process of your check can be seen down the bottom of the screen in the marked area in Fig8. Any 200 replies are good pass's with 3,4 & 500 being errors...
- 12) After list has finished, right hand clicking in window will allow you to save all good pass's in either l:p or @ formats.

Fig. 6

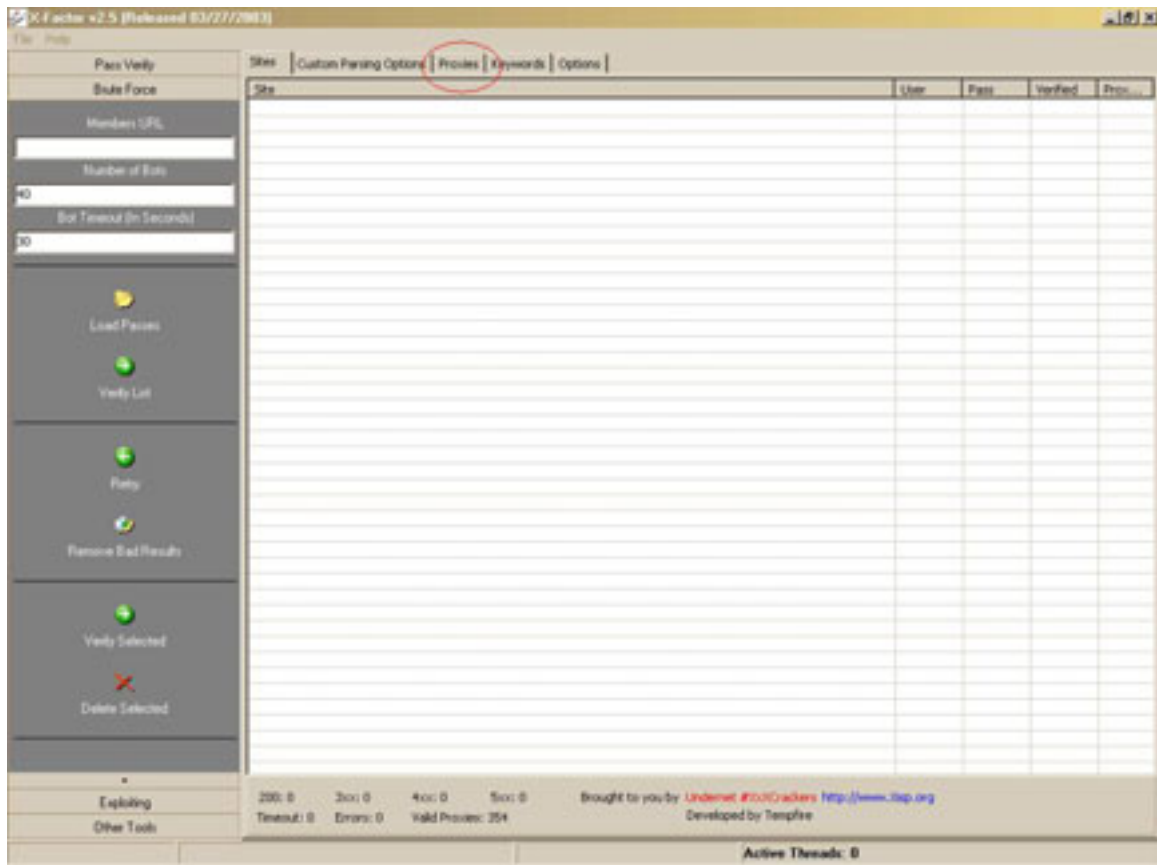


Fig. 7

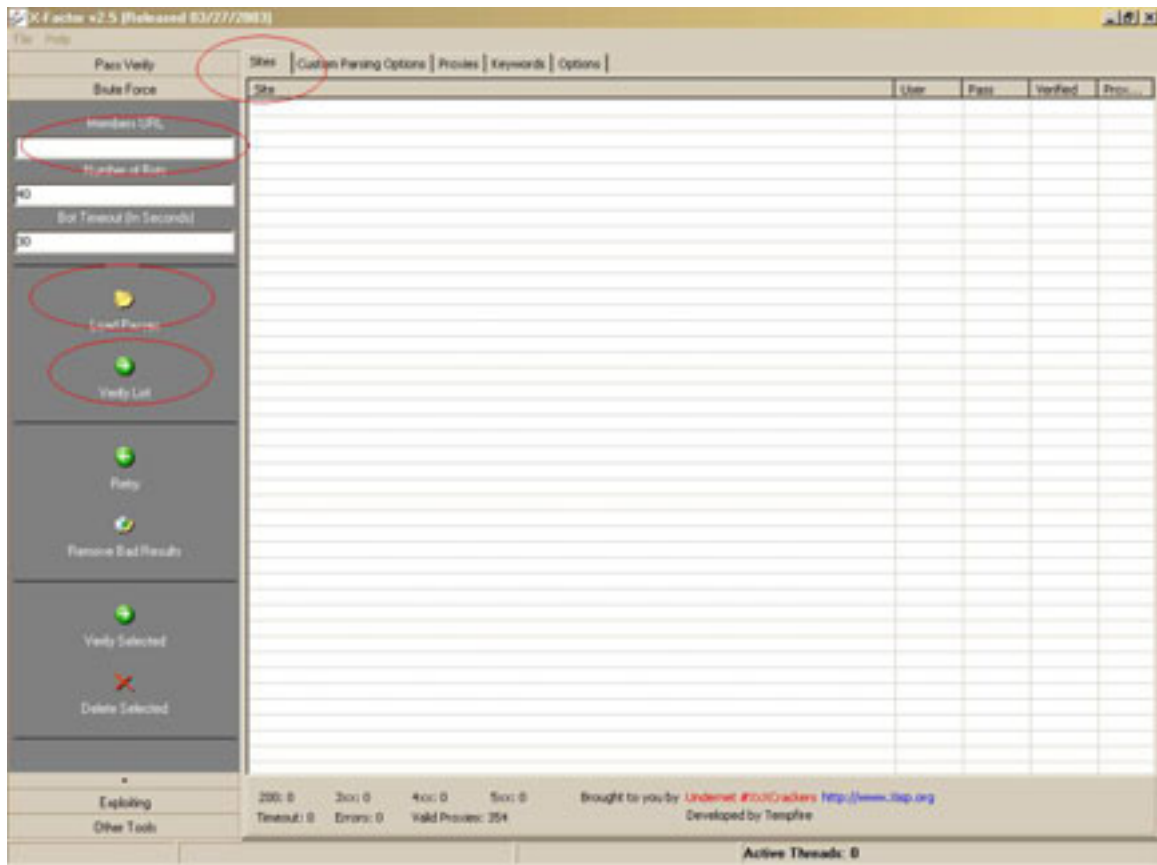
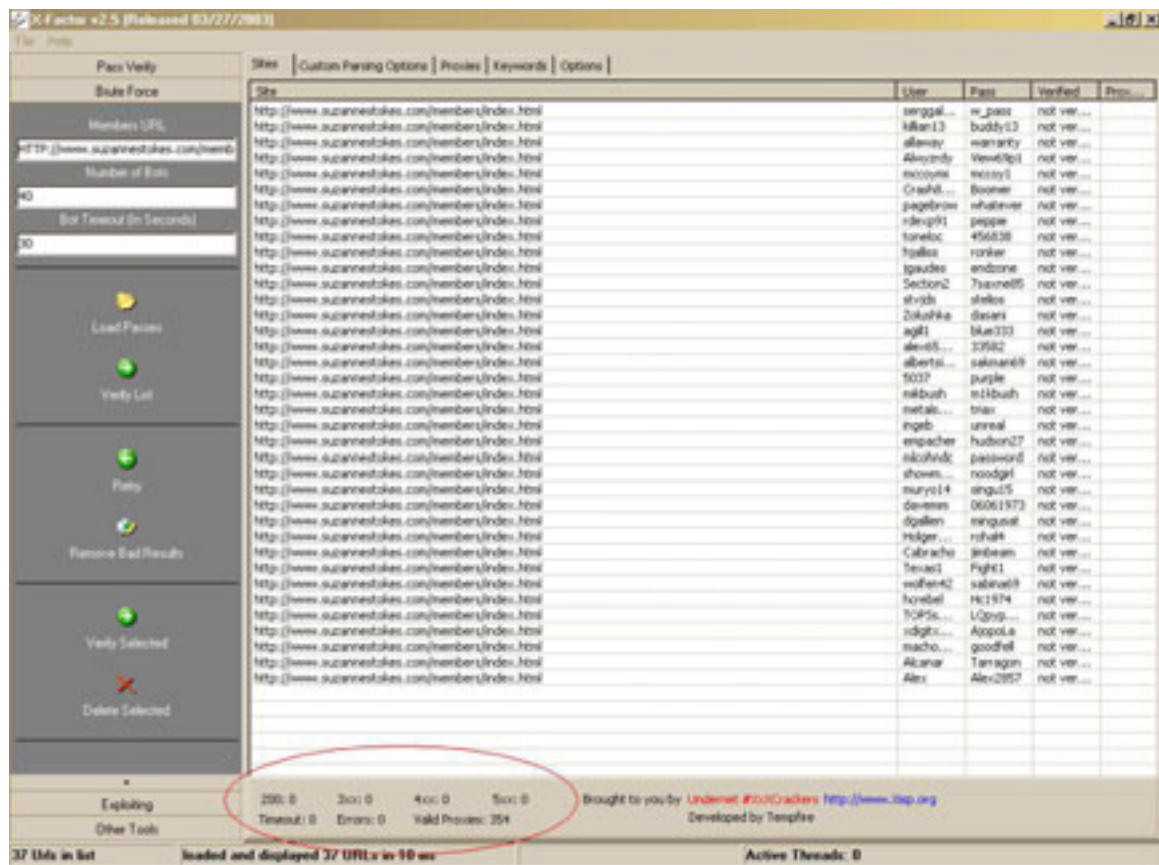


Fig. 8



So were all done... any comments or suggestions can be emailed to storm@xisp.org
Expect changes and additions to this txt file in the near future...

Good Cracking all ...

<http://www.Xisp.org>

UNDERNET #XxXCrackers