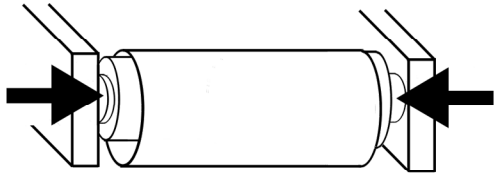
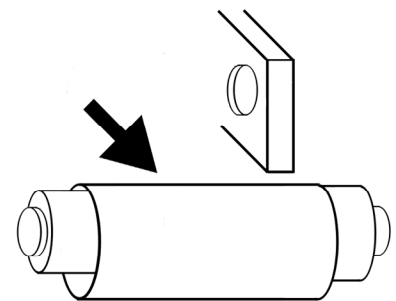
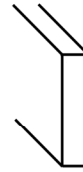


HOLY CRAP! I USED UP ALL THE TOILET PAPER!! WHATEVER WILL I DO?

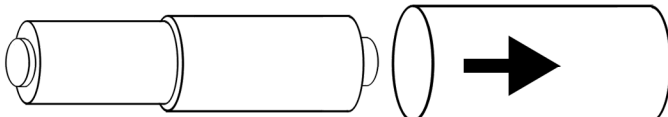
NEVER FEAR - HELP IS HERE! JUST FOLLOW THESE 7 SIMPLE STEPS!



1. REMOVE THE EMPTY ROLL. THIS CAN BE QUITE TRICKY. YOU'LL NEED TO PUSH ON BOTH ENDS OF THE TUBE THAT HOLDS THE EMPTY TOILET PAPER (TP) ROLL. DOING THIS WILL MAKE THE TUBE BECOME MAGICALLY SHORTER!



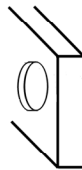
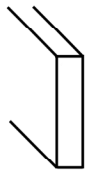
2. REMOVE THE TUBE AND THE EMPTY TP ROLL FROM THE WALL SOCKET. WATCH OUT FOR GRAVITY AT THIS POINT - IF YOU DROP THE TUBE, IT WILL FALL TO THE FLOOR.



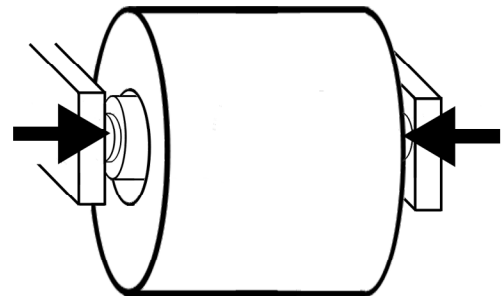
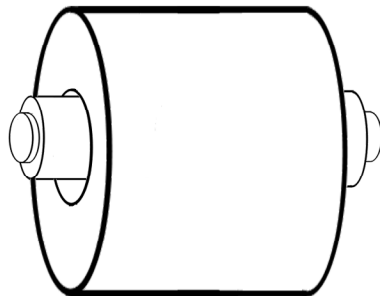
3. SLIDE THE EMPTY TP ROLL OFF THE TUBE. EVEN THOUGH THE DIAGRAM SHOWS THE ROLL GOING RIGHT, YOU CAN ALSO SLIDE IT OFF TO THE LEFT. IT DOESN'T REALLY MATTER.



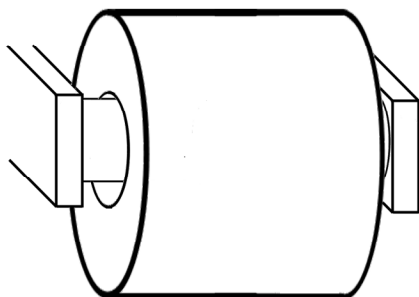
4. FIND A NEW ROLL OF TOILET PAPER. THIS CAN SOMETIMES BE AS EASY AS OPENING UP A CUPBOARD IN THE BATHROOM. BUT IN SOME CIRCUMSTANCES, IT CAN INVOLVE A TREK TO ANOTHER HOUSE TO STEAL THEIR TP. ONCE A NEW TP ROLL IS OBTAINED, UNWRAP IT (DIAGRAM NOT SHOWN). INSERT THE TP TUBE INTO THE FRESH ROLL OF TP, AS SHOWN ABOVE.



5. PUT THE NEW ROLL & TUBE BACK INTO THE WALL SOCKET. THIS IS A 2-STEP PROCESS (SEE STEP 6).



6. TO COMPLETELY INSTALL THE NEW ROLL, YOU WILL AGAIN HAVE TO PUSH THE ENDS OF THE TUBE INWARDS. YOU MAY FIND THIS EASIER THIS TIME, NOW THAT YOU'VE HAD SOME PREVIOUS EXPERIENCE - BUT KEEP IN MIND THAT THE EXTRA WEIGHT OF THE NEW ROLL (COMPARED TO THE EMPTY ROLL) CAN CREATE BALANCE ISSUES.



7. LINE UP THE ENDS OF THE TUBE WITH THE HOLES IN THE WALL SOCKET, THEN REMOVE YOUR HANDS FROM THE TUBE. NOW TRY ROLLING THE NEW TP ROLL IN PLACE. IF IT FALLS DOWN, SOMETHING MUST HAVE GONE WRONG! REPEAT STEPS 4-7. IF IT DOESN'T FALL, DO THE DECENT THING AND LOOSEN THE FIRST SHEET OF TP FROM THE ROLL.

CONGRATULATIONS!!

YOU REPLACED A TOILET PAPER ROLL! YOU'RE A GENIUS!