

# Quantitation Report of standard curve of pCIneo-SmGPCR (stock conc = 0.03µg/µl)

## Experiment Information

Run Name	Fouad March 3
Run Start	03/03/2005 3:38:36 PM
Run Finish	03/03/2005 5:29:14 PM
Operator	Fouad
Notes	
Run On Software Version	Rotor-Gene 6.0.14
Run Signature	The Run Signature is valid.
Gain FAM/Sybr	5.

## Quantitation Information

Threshold	0.0012
Left Threshold	1.000
Standard Curve Imported	No
Standard Curve (1)	conc= 10 <sup>^(-0.799*CT + 2.655)</sup>
Standard Curve (2)	CT = -1.252*log(conc) + 3.323
Reaction efficiency (*)	5.29433 (* = 10 <sup>^(-1/m) - 1</sup> )
M	-1.25164
B	3.32337
R Value	0.9937
R <sup>2</sup> Value	0.98744
Start normalising from cycle	1
Noise Slope Correction	No
Reaction Efficiency Threshold	Disabled
Normalisation Method	Dynamic Tube Normalisation
Digital Filter	Light
No Template Control Threshold	10%
Sample Page	Page 1

## Messages

Message

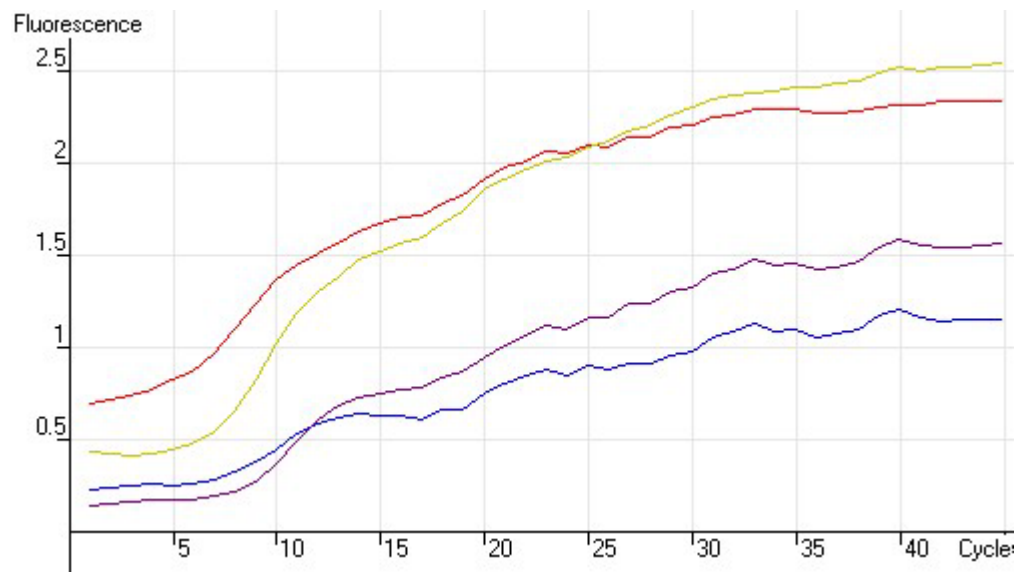
## Profile

Cycle

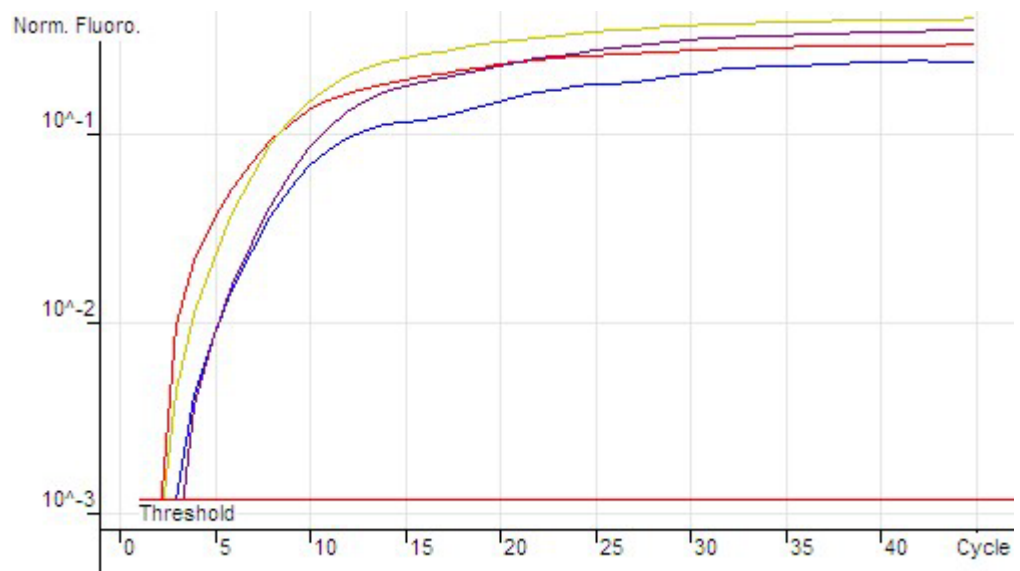
Cycle Point

Hold @ 50°C, 2 min 0 secs	
Hold 2 @ 94°C, 2 min 0 secs	
Cycling (45 repeats)	Step 1 @ 95°C, hold 15 secs
	Step 2 @ 55°C, hold 30 secs
	Step 3 @ 72°C, hold 30 secs, acquiring to Cycling A(FAM/Sybr)
Melt (72-95°C) , hold 45 secs on the 1st step, hold 5 secs on next steps, Melt A(FAM/Sybr)	

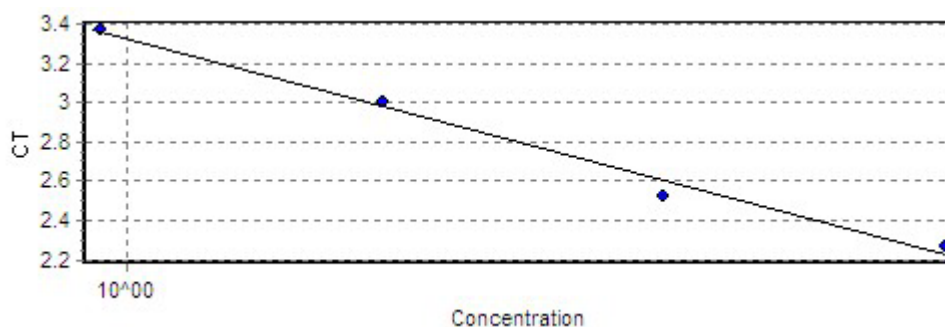
### Raw Data For Cycling A.FAM/Sybr



### Quantitation data for Cycling A.FAM/Sybr



### Standard Curve



No.	Colour	Name	Type	Ct	Given Conc (ng/reaction)	Calc Conc (ng/reaction)	% Var
1	Red	1:10 PCIneo SmGPCR	Standard	2.27	7.5000	6.9060	7.9%
2	Yellow	1:20 PCIneo SmGPCR	Standard	2.53	3.7500	4.3405	15.7%
3	Blue	1:40 PCIneo SmGPCR	Standard	3.01	1.8750	1.7926	4.4%
4	Purple	1:80 PCIneo SmGPCR	Standard	3.37	.9375	.9201	1.9%
1-4		1	Group				

This report generated by Rotor-Gene Real-Time Analysis Software 6.0 (Build 14)  
 (C)Corbett Research 2004  
 (R)All Rights Reserved

# Melt Report

## Experiment Information

Run Name	Fouad March 3
Run Start	03/03/2005 3:38:36 PM
Run Finish	03/03/2005 5:29:14 PM
Operator	Fouad
Notes	
Run On Software Version	Rotor-Gene 6.0.14
Run Signature	The Run Signature is valid.
Gain FAM/Sybr	5.

## Melt Information

Digital Filter	None
Sample Page	Page 1
Temp. Threshold	0°C
Threshold	0

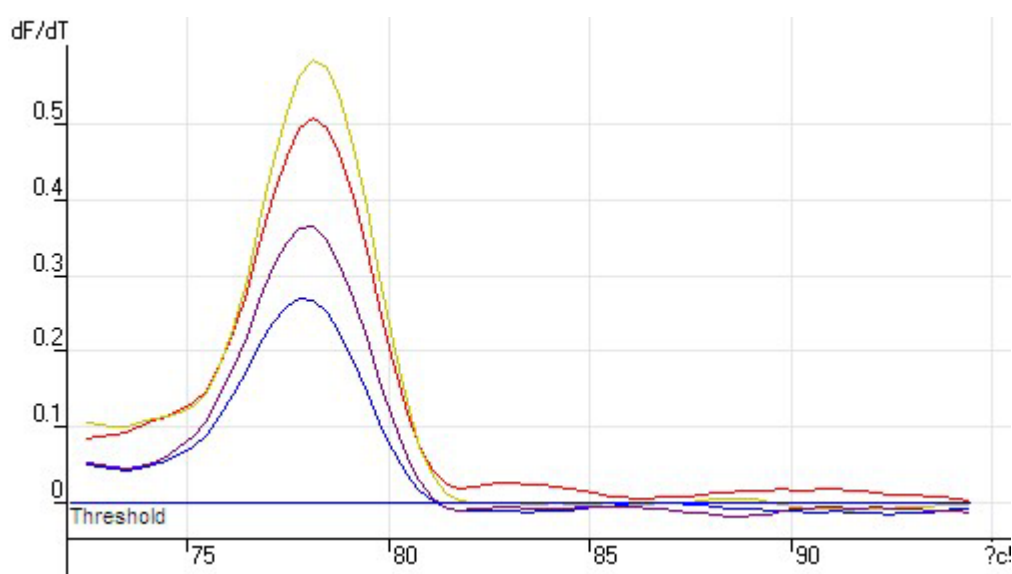
## Messages

Message

## Profile

Cycle	Cycle Point
Hold @ 50°C, 2 min 0 secs	
Hold 2 @ 94°C, 2 min 0 secs	
Cycling (45 repeats)	Step 1 @ 95°C, hold 15 secs
	Step 2 @ 55°C, hold 30 secs
	Step 3 @ 72°C, hold 30 secs, acquiring to Cycling A(FAM/Sybr)
Melt (72-95°C) , hold 45 secs on the 1st step, hold 5 secs on next steps, Melt A(FAM/Sybr)	

## Melt data for Melt A.FAM/Sybr



No.	Name	Genotype	Peak 1	Peak 2	Peak 3
1	1:10 PCIneo SmGPCR		78.2	82.8	90.3
2	1:20 PCIneo SmGPCR		78.2	88.5	
3	1:40 PCIneo SmGPCR		78		
4	1:80 PCIneo SmGPCR		78		

## Bin Name Temperature Sample No. Sample Name Peak

This report generated by Rotor-Gene Real-Time Analysis Software 6.0 (Build 14)  
 (C)Corbett Research 2004  
 (R)All Rights Reserved