

Opisthobranch line art

by Wesley M. Farmer

Copyright 1999 Wesley Farmer

Opisthobranch line art

by Wesley M. Farmer

An Animated Presentation of

Copyright 1999 Wesley Farmer

Opisthobranch line art

by Wesley M. Farmer

An Animated Presentation of
Sea-slug Gastropods

Copyright 1999 Wesley Farmer

Opisthobranch line art

by Wesley M. Farmer

An Animated Presentation of
Sea-slug Gastropods
Enjoy!

Copyright 1999 Wesley Farmer

Opisthobranch line art

by Wesley M. Farmer

An Animated Presentation of
Sea-slug Gastropods

Enjoy!

[http://www.angelfire.com/ca2/seashorediscoveries/
index.html](http://www.angelfire.com/ca2/seashorediscoveries/index.html)

Copyright 1999 Wesley Farmer

Opisthobranch line art

by Wesley M. Farmer

An Animated Presentation of
Sea-slug Gastropods
Enjoy!

[http://www.angelfire.com/ca2/seashorediscoveries/
index.html](http://www.angelfire.com/ca2/seashorediscoveries/index.html)

wmfarmer@adnc.com

Copyright 1999 Wesley Farmer

Opisthobranch line art

by Wesley M. Farmer

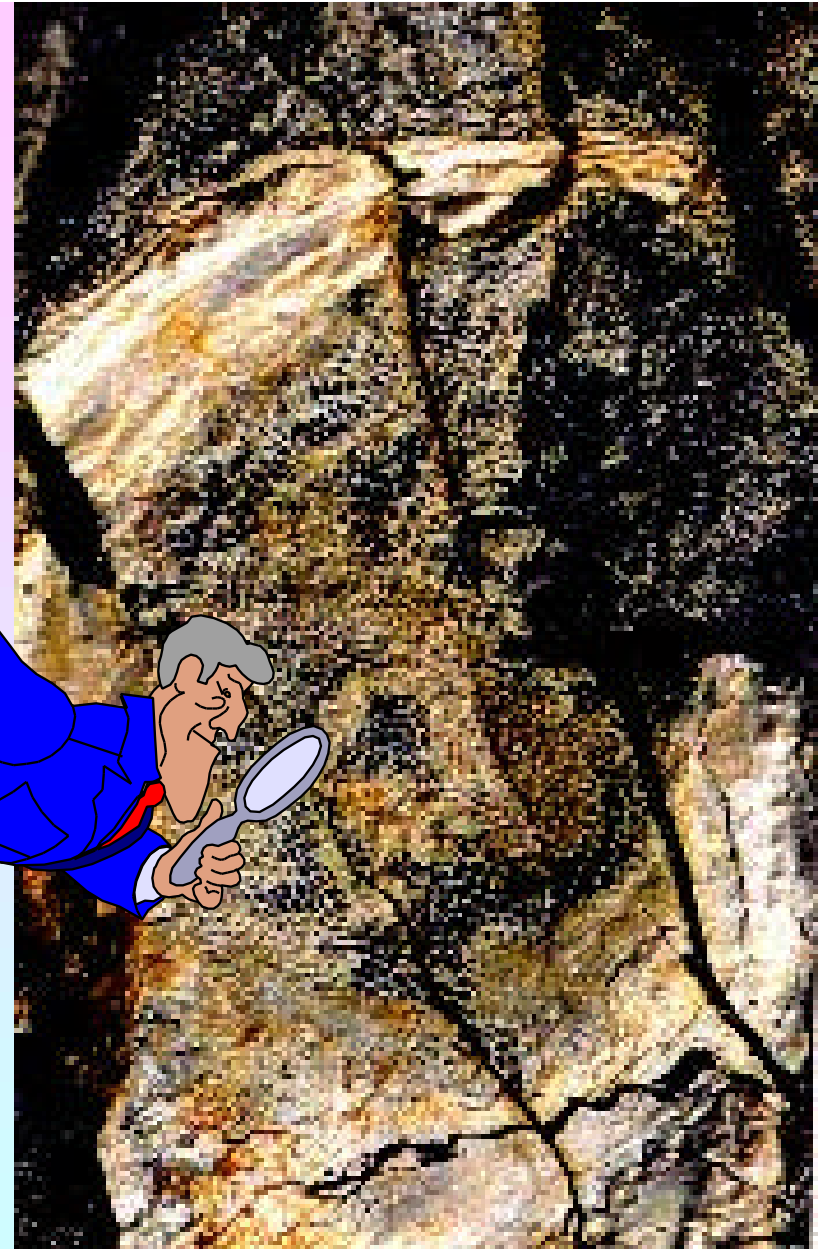
An Animated Presentation of
Sea-slug Gastropods
Enjoy!

[http://www.angelfire.com/ca2/seashorediscoveries/
index.html](http://www.angelfire.com/ca2/seashorediscoveries/index.html)

wmfarmer@adnc.com

Copyright 1999 Wesley Farmer

Wonder
if a
nudibranch
nibbled
upon that
50 million
year old
bryozoan?



Zephyrinidae family



Antiopella barbarensis



Antiopella barbarensis

Zephyrinidae family

- Bahia San Quintin,
Baja to Vancouver
Island, B.C. Canada



Antiopella barbarensis



Antiopella barbarensis

Zephyrinidae family

- Bahia San Quintin,
Baja to Vancouver
Island, B.C. Canada
- To 20 mm



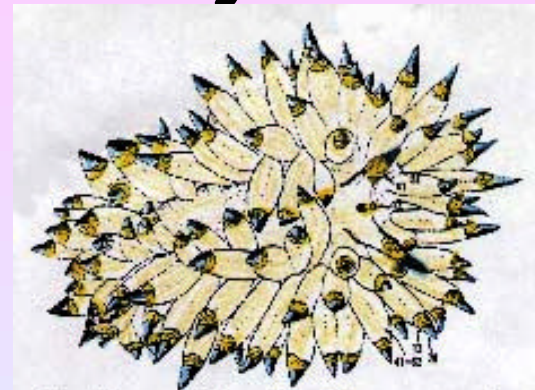
Antiopella barbarensis



Antiopella barbarensis

Zephyrinidae family

- Bahia San Quintin, Baja to Vancouver Island, B.C. Canada
- To 20 mm
- Blue tips with gold underneath other wise translucent light color.



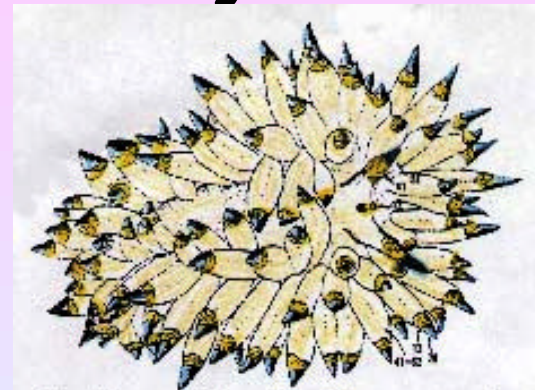
Antiopella barbarensis



Antiopella barbarensis

Zephyrinidae family

- Bahia San Quintin, Baja to Vancouver Island, B.C. Canada
- To 20 mm
- Blue tips with gold underneath other wise translucent light color.
- Very colorful.



Antiopella barbarensis



Antiopella barbarensis



At San Diego

H. M. YACHT BRITANNIA

26th February, 1983

Dear M. Farmer,

The three books you sent for The Queen, her grandson and granddaughter entitled "Sea Slug Gastropods" have arrived safely on board HMY Britannia, together with the *Antipella barbarensis* embedded in a plastic block for The Duke of Edinburgh.

Her Majesty and His Royal Highness are very pleased to accept these gifts and much appreciated your kind thought in sending them to them.

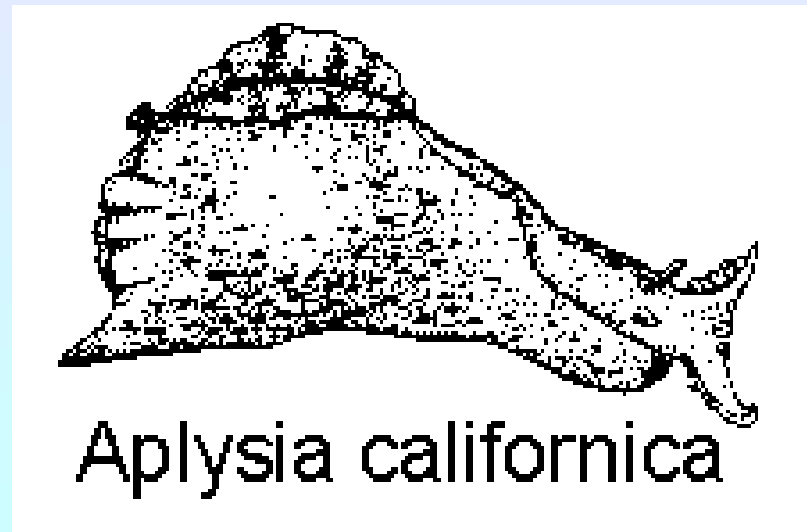
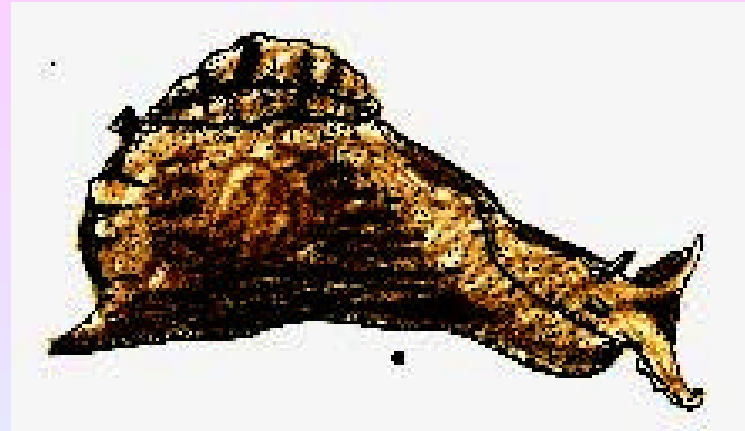
The Queen and The Duke of Edinburgh are greatly enjoying their visit to the West Coast of the United States and were very touched by the warmth of the welcome they received in San Diego today.

Yours Sincerely
Robert Johnson

Mr. Wesley M. Farmer.

Aplysiidae

- Grows to 480 mm
- Feeds on algae
- Gulf of California to Humboldt Bay, California
- Rather flaccid and produces a purple fluid.

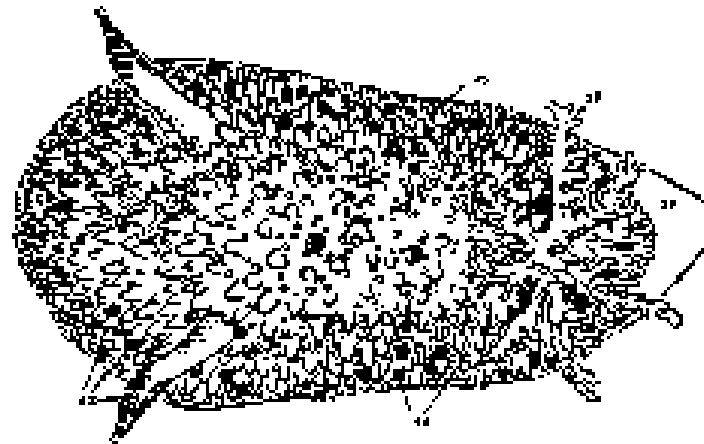


Family Onchidorididae

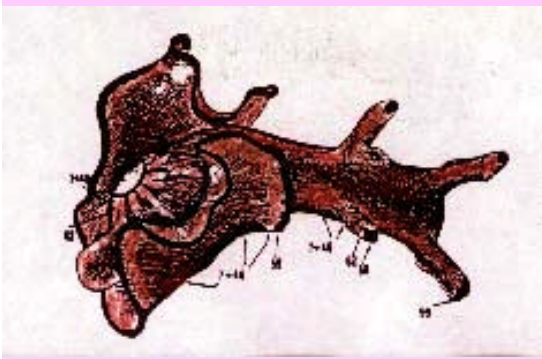
- Point Conception to Victoria, B.C. Canada
- Grows to 25 mm
- Dorsum brown, flecked with blotches of black.
- Feeds on bryozoans.

Family Onchidorididae

- Point Conception to Victoria, B.C. Canada
- Grows to 25 mm
- Dorsum brown, flecked with blotches of black.
- Feeds on bryozoans.

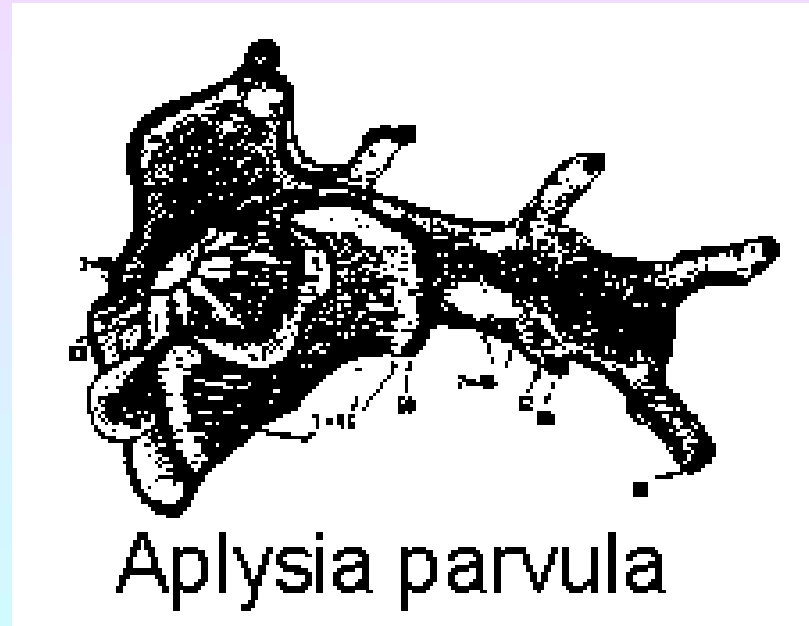


Acanthodoris brunnea



Aplysiidae family

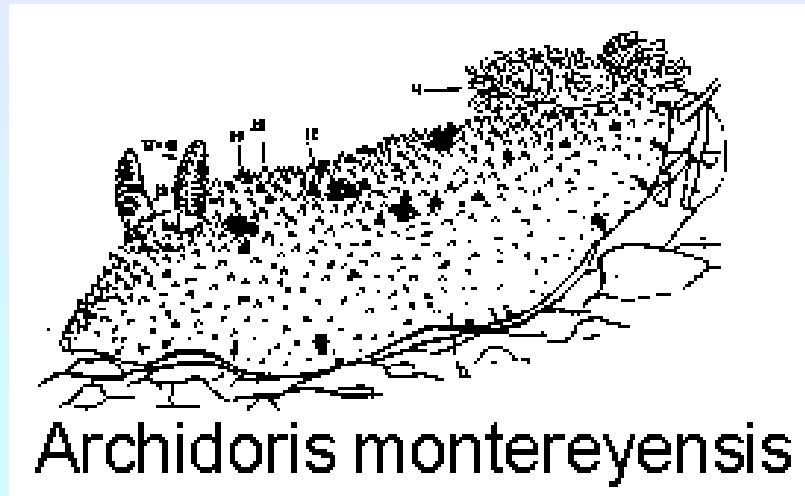
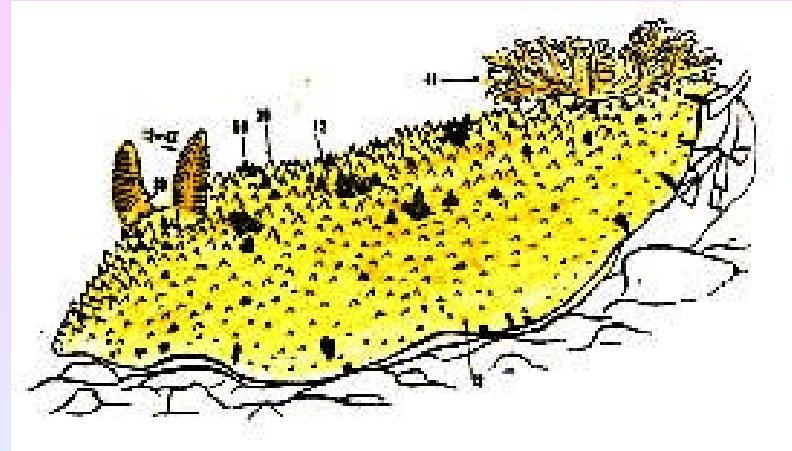
- Grows to 36 mm
- Gulf of California and Hawaii, and Pacific coast of Japan.
- A rich reddish brown with a paler mantle
Light dots and patches. Dark parapodial border.



Aplysia parvula

Archidorididae family

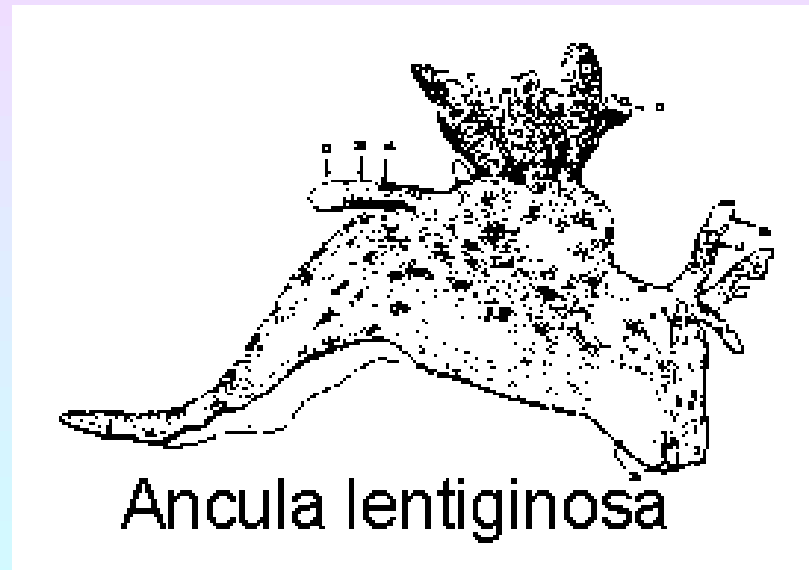
- Grows to 100 mm
- San Diego to Alaska
- A light yellow with minute brown or black dots over dorsum.
- Can be discovered in tide pools.



Archidoris montereyensis

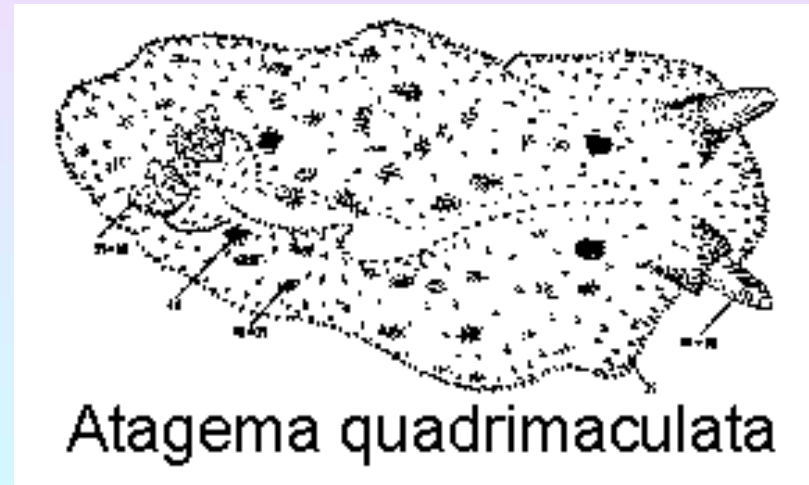
Polyceratidae family

- Gulf of California to Monterey Bay, California
- 21 mm in length
- Ground color is translucent tan to off white. Reddish-brown specks on body or means freckled.



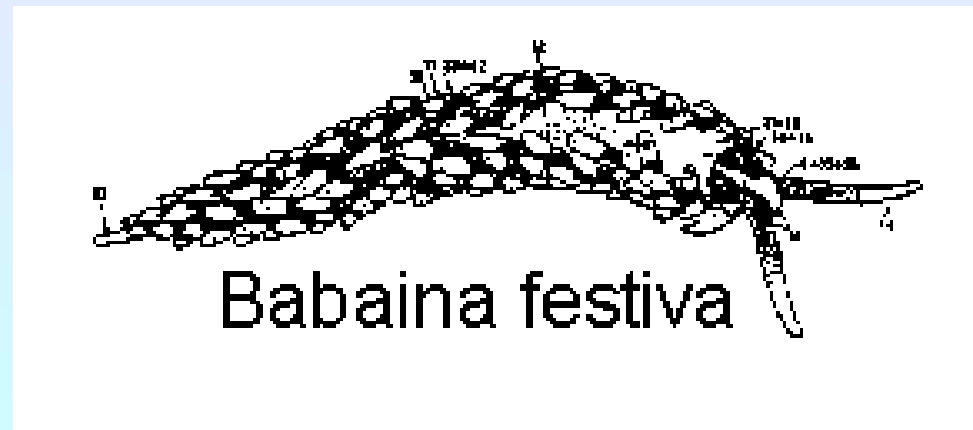
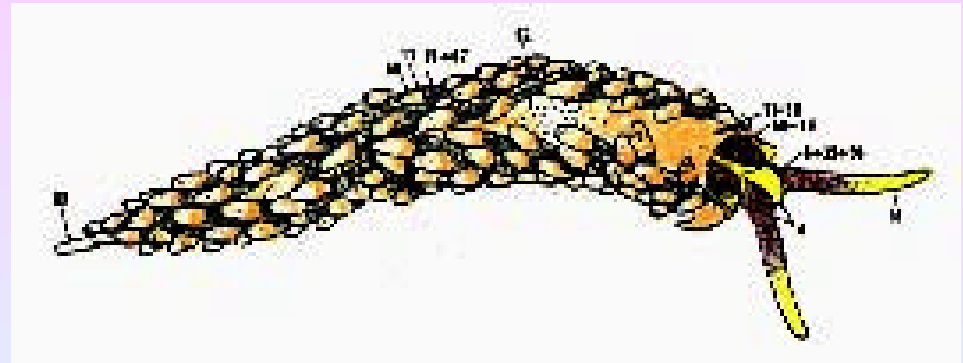
Dorididae family

- San Diego to Monterey Bay CA
- Reaches 64 mm long
- Raw umber mottled with small dark-brown to black specks. Four large black spots on dorsum.



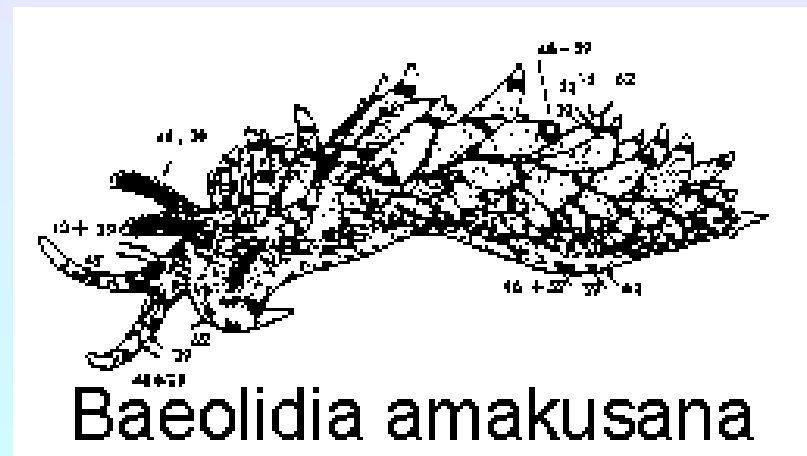
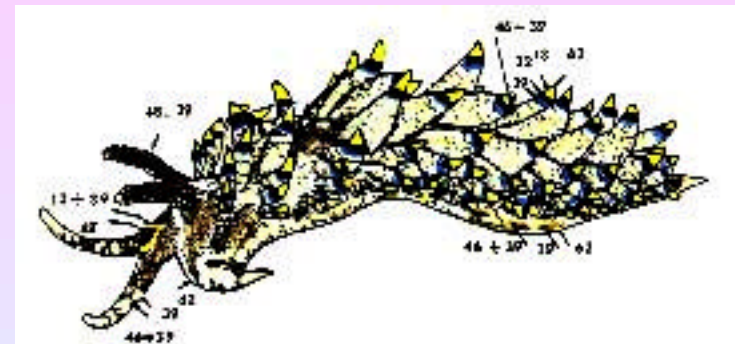
Babainidae family

- La Jolla to Los Angeles, California
- Reaches 22 mm
- A pink-red body, distal half of cerata yellow.
- Rhinophores are joined at base.



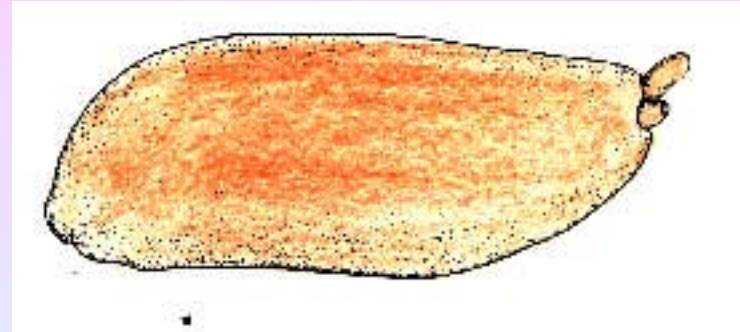
Aeolidiidae family

- Gulf of California, Indo Pacific, Hawaii, Japan
- To 40 mm
- Cream blotched color on brown body. Cerata with blue ring distally tipped in white.



Pleurobranchidae family

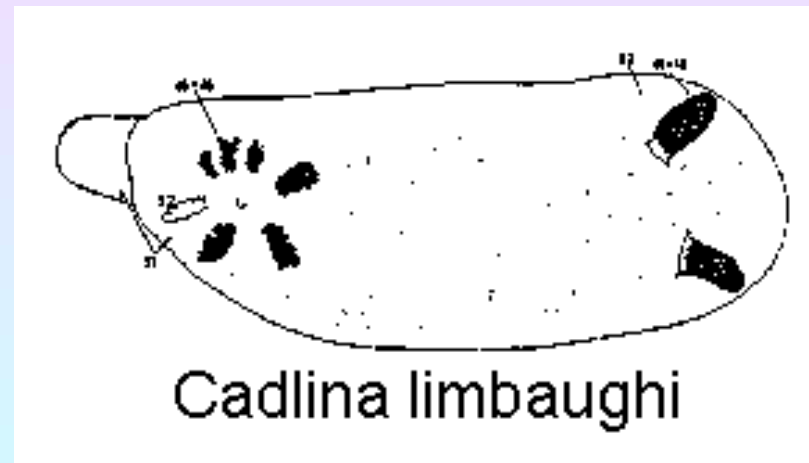
- Gulf of California
- To 60 mm
- Goblet cells over entire body pH. 1
- Vermillion color.



Berthellina engeli

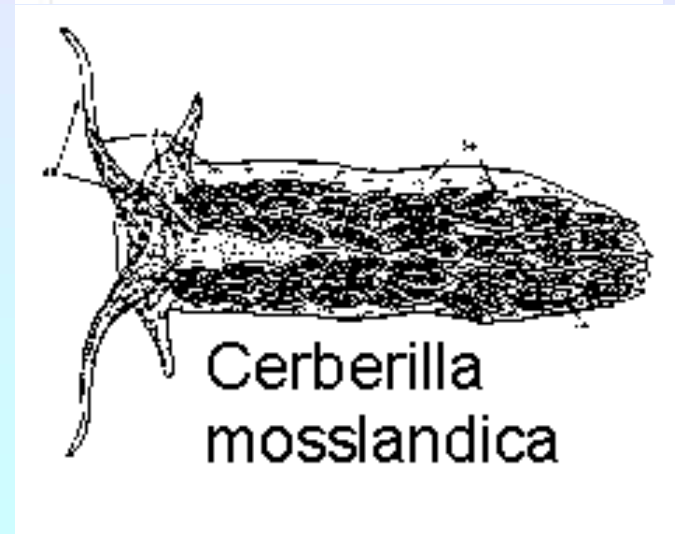
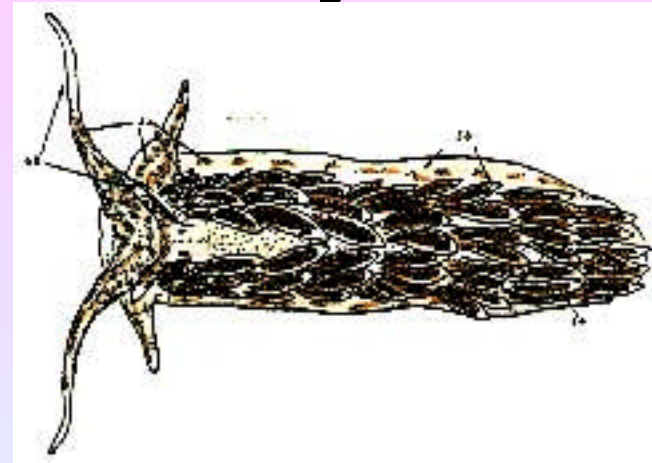
Dorididae family

- Punta Eugenia, Baja to Vancouver Island, B.C. Canada
- To 27 mm
- Gray-white with whiter spots. Gills brown and one white.
- Rhinophores brown.



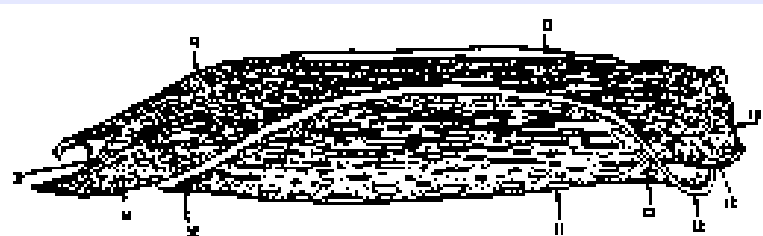
Aeolidiidae family

- Gulf of California
- To 20 mm in length
- Burrows under the sand.
- Translucent white and light brown or tan.



Aglajidae family

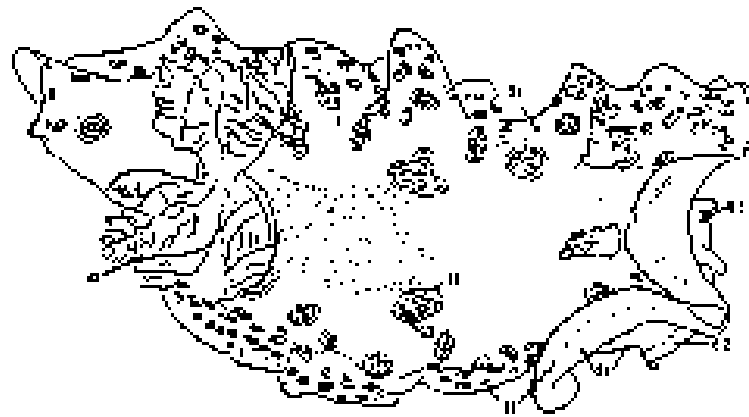
- Gulf of California to Elkhorn Slough, California
- To 225 mm in length
- Feeds on bubble shells and other nudibranchs.
- Brown with yellow marks and blue edged mantle.



Chelidonura inermis



Dorididae family

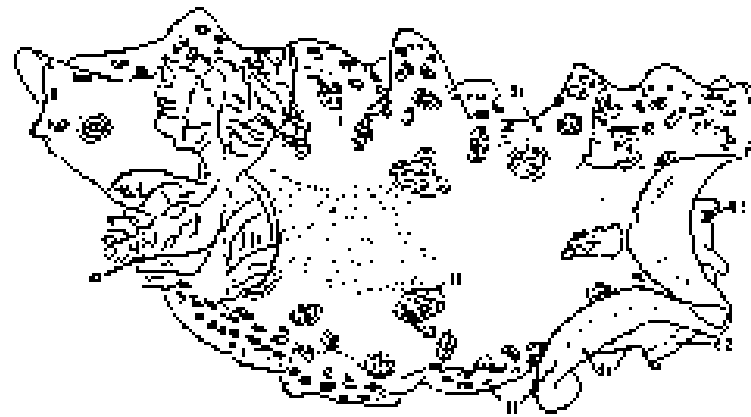


Chromodoris marislae



Dorididae family

- Gulf of California

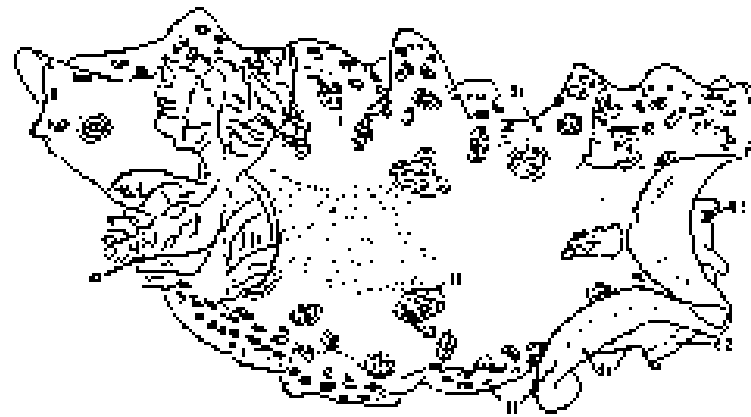


Chromodoris marislæ



Dorididae family

- Gulf of California
- To 80 mm in length

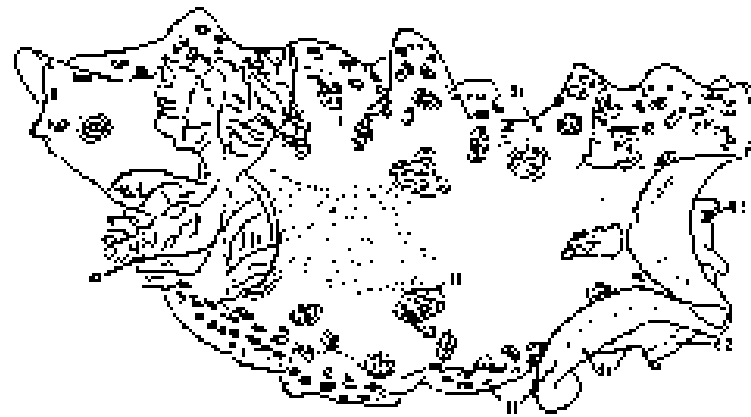


Chromodoris marislae

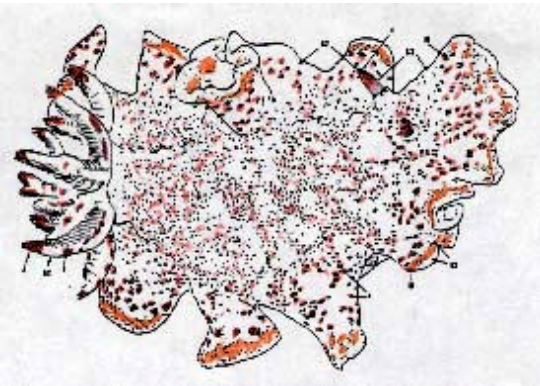


Dorididae family

- Gulf of California
- To 80 mm in length
- Translucent white with opaque orange spots along mantle and dorsum.

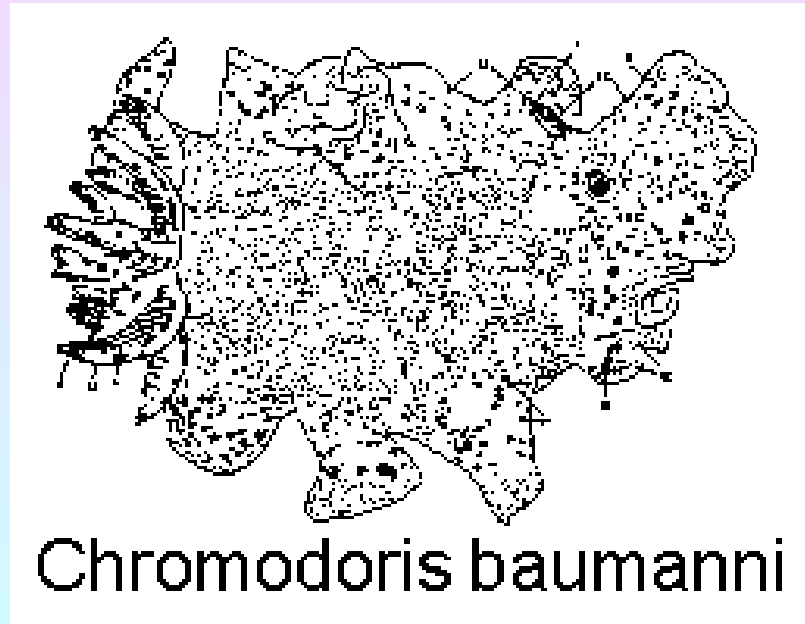


Chromodoris marislæ



Dorididae family

- Gulf of California to Ecuador
- To 62 mm long
- White with red-purple dots. An interrupted orange band along edge of mantle.



Chromodoris baumanni

Dorididae family

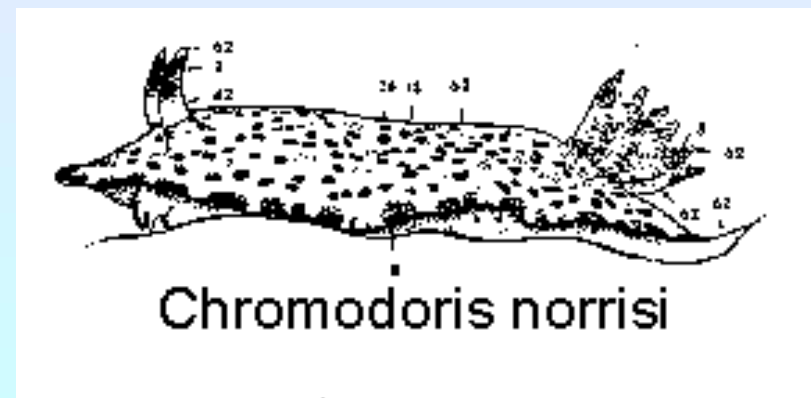
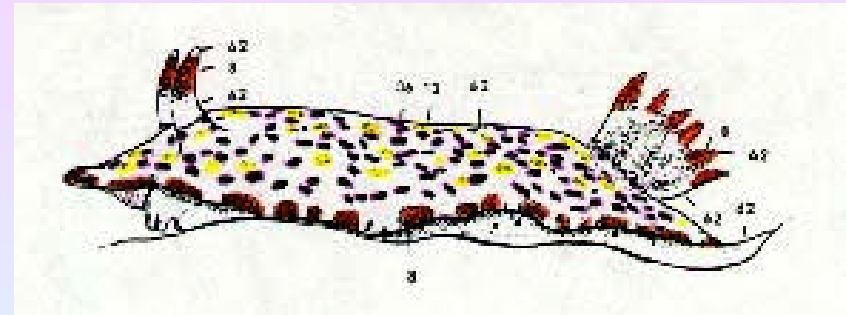
- Madalena Bay, Baja to Monterey Bay, CA
- To 65 mm
- Rocky habitats
- Brilliant reddish-violet with yellow lines and mantle rim.



Chromodoris macfarlandi

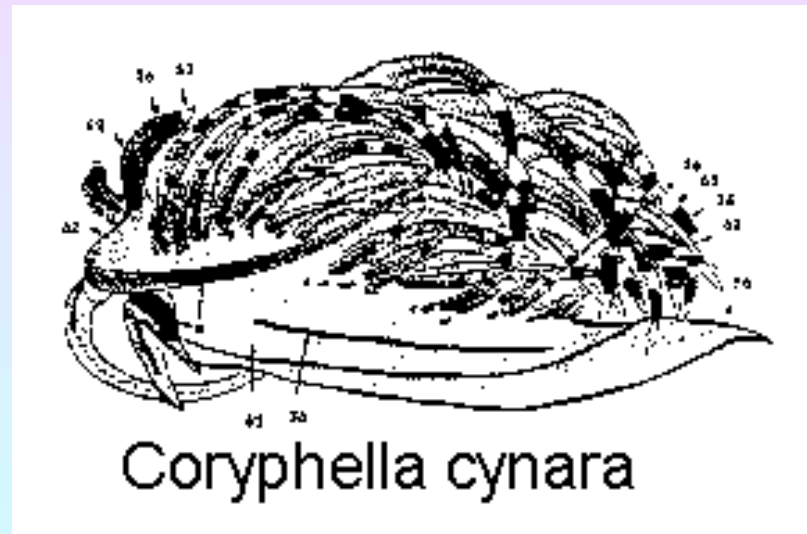
Dorididae family

- Costa Rica to Pacific coast of Baja California
- To 61 mm long
- Small red and yellow dots on white with orange interrupted band on mantle margin.



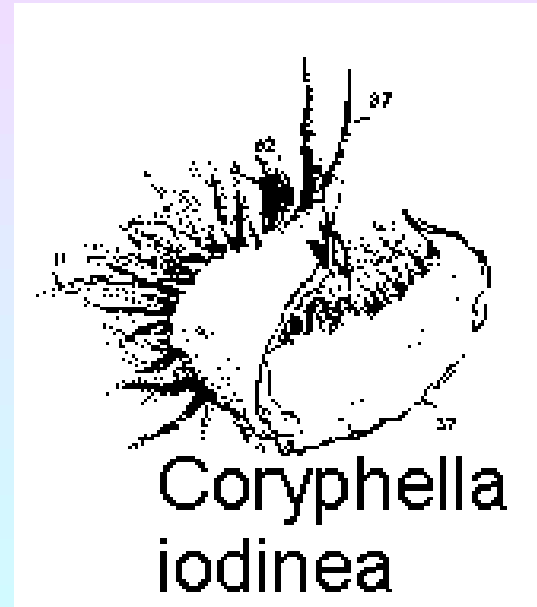
Flabellinidae family

- Gulf of California
- Grows to 25 mm
- Swims like a swimmer by breast stroke method of the cerata.
- Translucent with violet, blue lines. Foot angles are white.



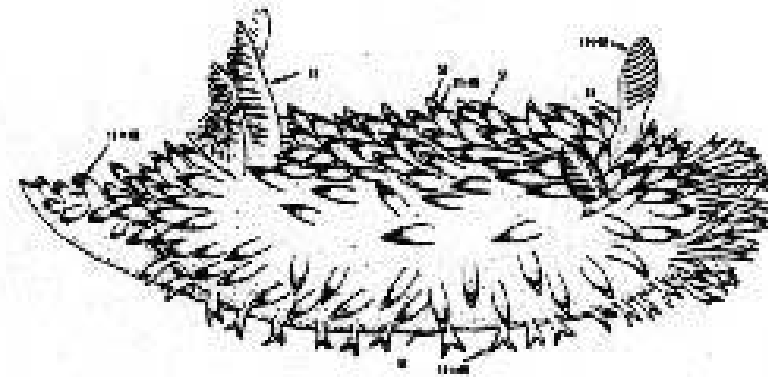
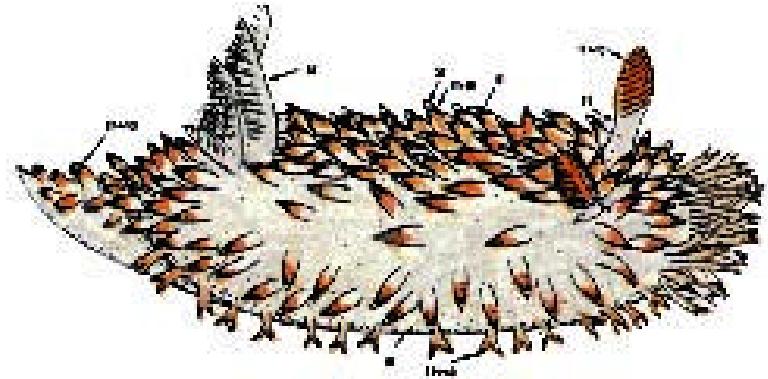
Flabellinidae family

- Gulf of California
Baja to Vancouver
Island, B.C. Canada
- To 70 mm
- Swims by undulation
side to side.
- Body is purple, cerata
are brilliant orange
and rhinophores red.



Triophidae family

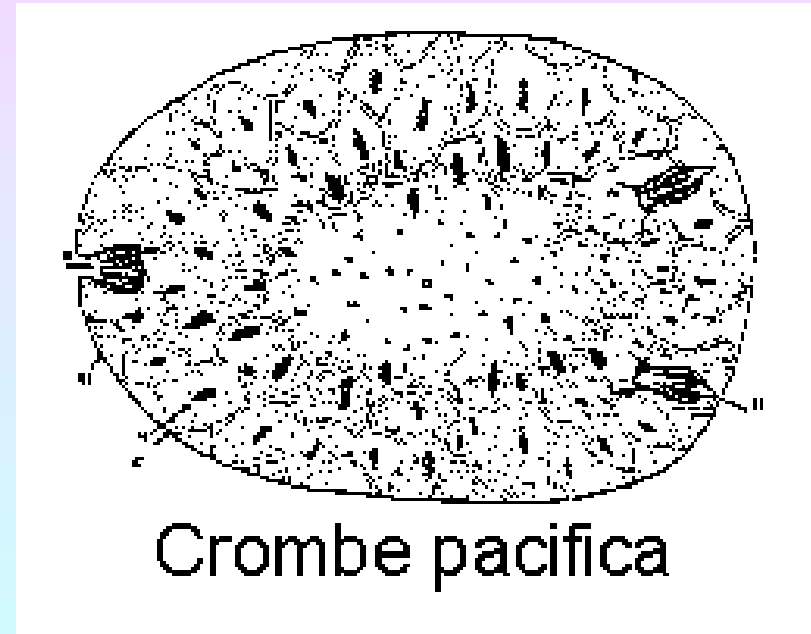
- Point Loma San Diego, California
- To 7 mm
- White color with distal orange and white tipped processes on dorsum.
- Rocky habitat.



Crimora coneja

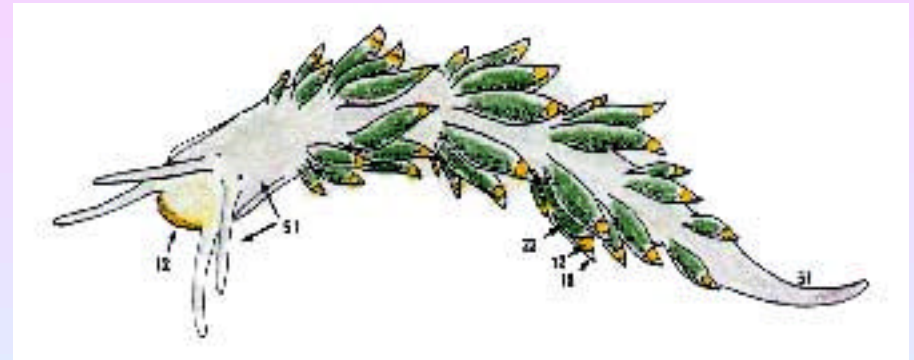
Corambidae family

- San Diego to Vancouver Island
- On bryozoa on kelp
- To 13 mm
- Color matches that of the bryozoans below. Difficult to see they are so camouflaged.



Cuthonidae family

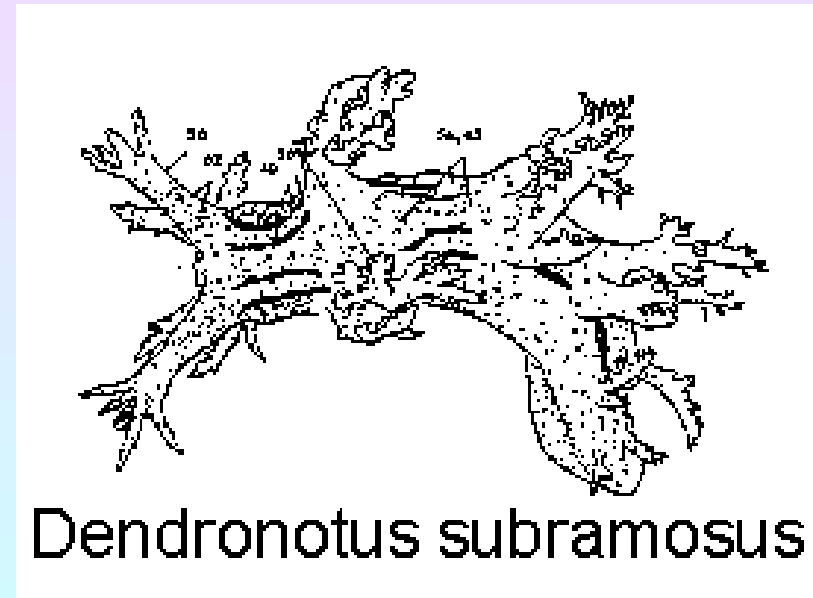
- San Luis Obispo County to Monterey Bay, California.
- To 5 mm
- Gray with an orange anterior and green cerata with orange tips.



Crimora coneja

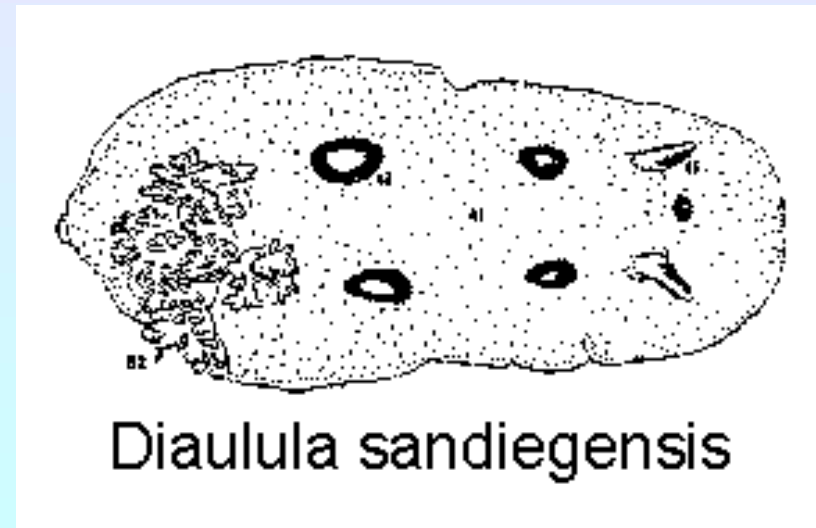
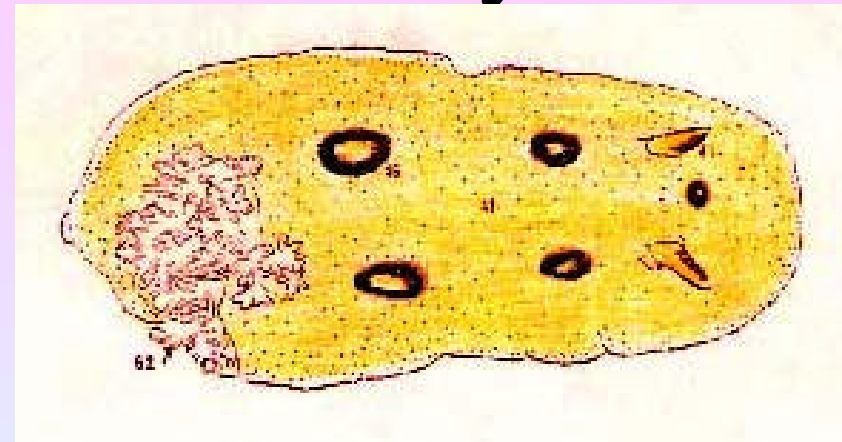
Dendronotidae family

- Northern Baja to San Juan Channel, B. C. Canada
- To 65 mm
- Yellow or orange body color covered with small lemon-yellow spots. Terra cotta lines on dorsum.



Discodorididae family

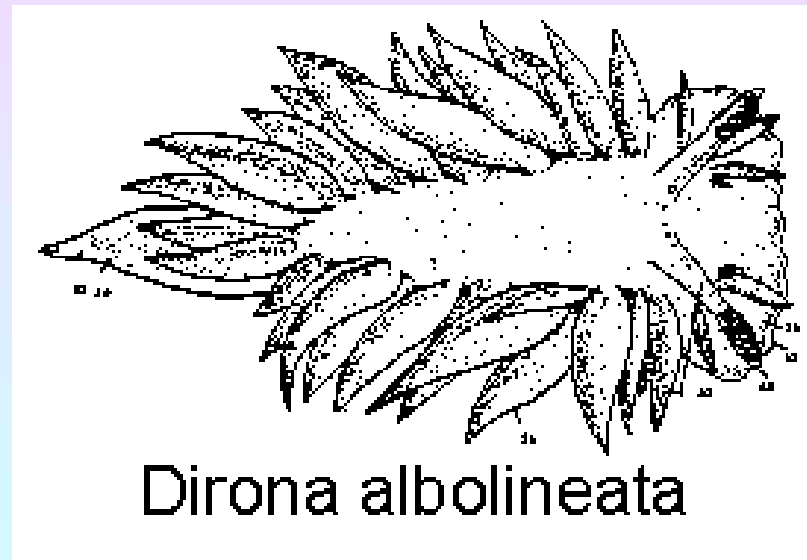
- Gulf of California, Baja to Aleutian Islands, Alaska
- To 100+ mm
- Tan body with 3-6 brown rings on dorsum.



Diaulula sandiegensis

Dironidae family

- San Diego, CA to Puget Sound
- To 165 mm
- Translucent white body with opaque white bands on cerata and around the veil.



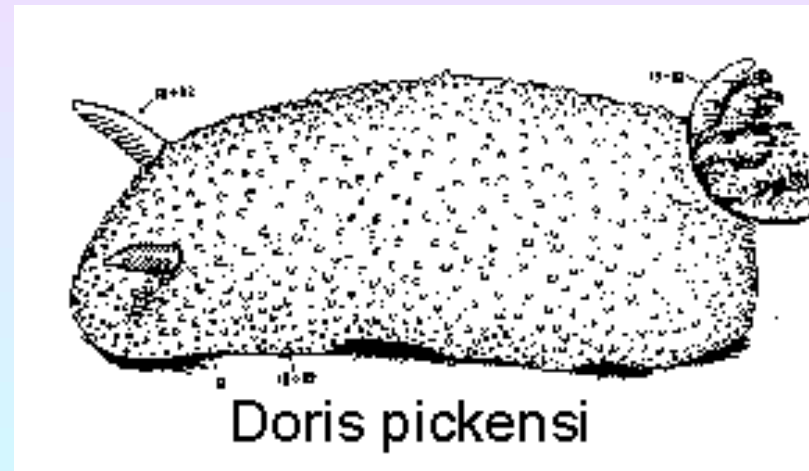
Dironidae family

- Point Loma to Dillon Beach, California
- To 40+ mm
- Translucent white or light yellow. Cerata appear lumpy.



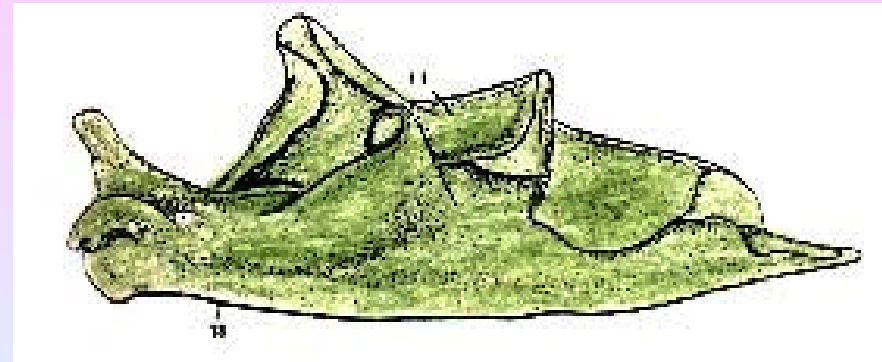
Dorididae family

- Gulf of California
- To 25 mm
- Translucent white with opaque white notal papillae. Light yellow gills, and rhinophores.



Elysiidae family

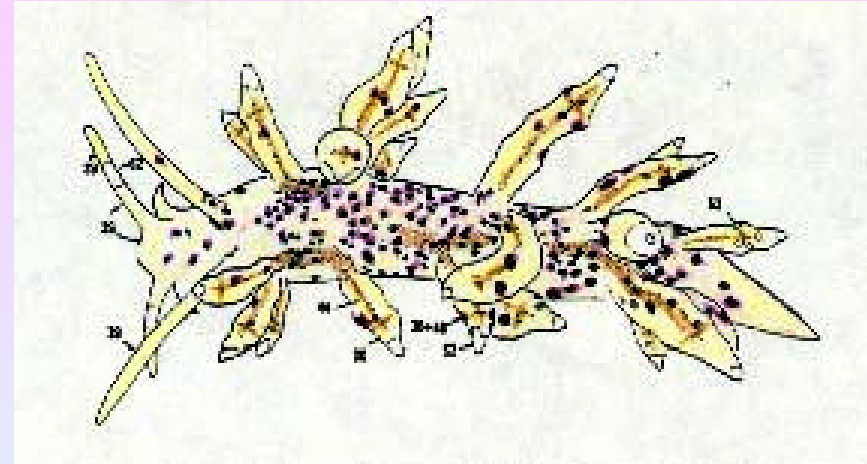
- Gulf of California to Washington
- To 29 mm
- Green like the algae they feed upon. May have flecks of blue.



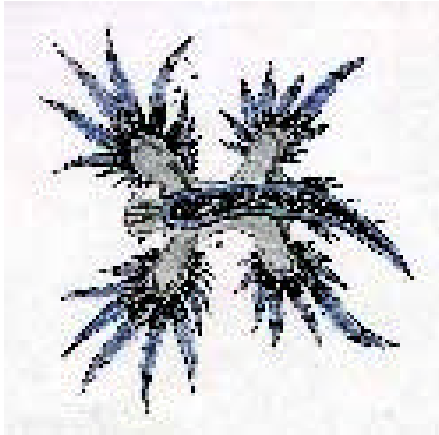
Elysia hedgpethi

Eubranchidae family

- San Francisco Bay, Japan
- To 5 mm
- On Obelia colonies in Bays.
- Yellow white body with brown spots. White tip cerata.

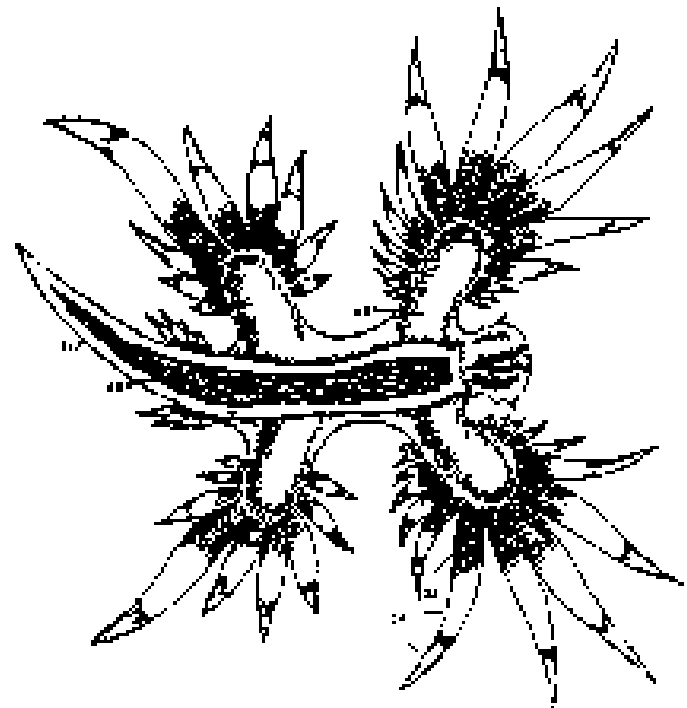


Eubranchus misakiensis



Glaucidae family

- Circum-equatorial seas
- Pelagic
- Deep blue color with silvery white regions. Sole is silvery in the middle.



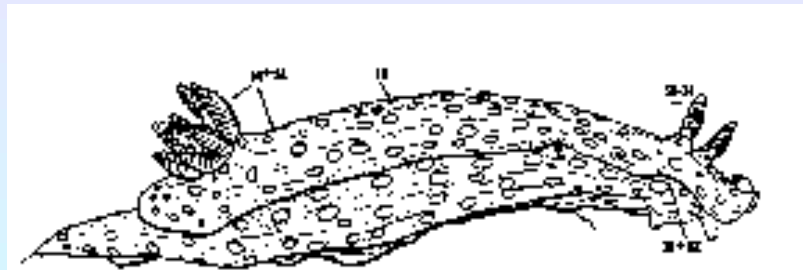
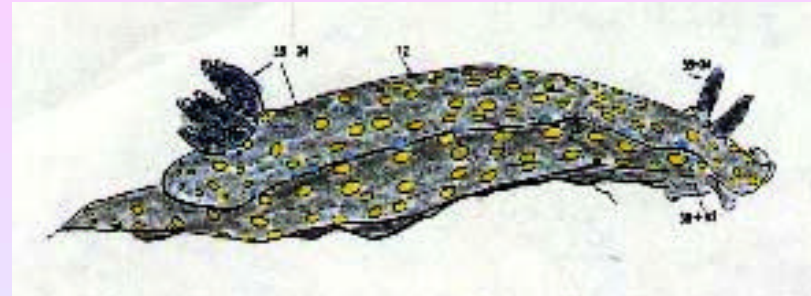
Glaucus marinus

Goniodoridae family

- Point Loma CA to Coos Bay, Oregon
- To 18 mm
- Body, gills and rhinophores are red. The cerata are pink with lighter tips.



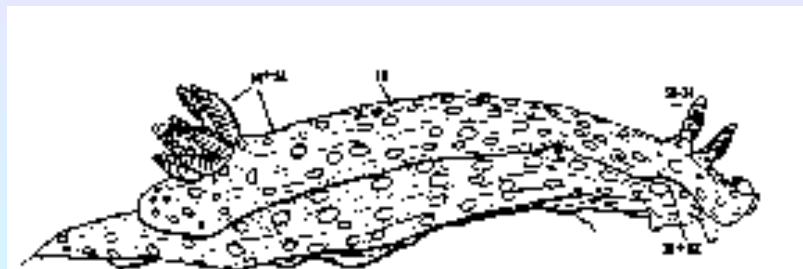
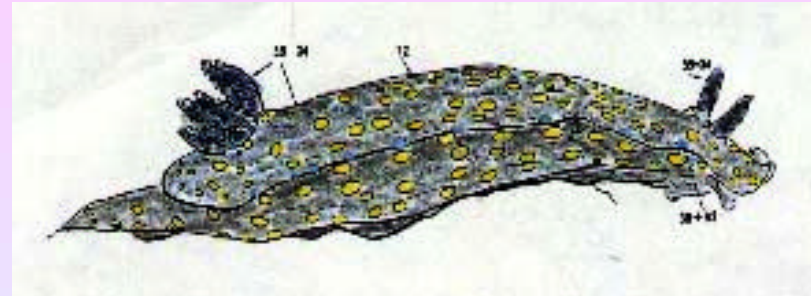
Dorididae family



Hypselodoris ghiselini

Dorididae family

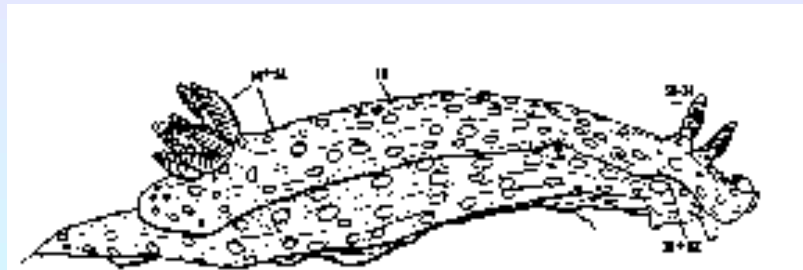
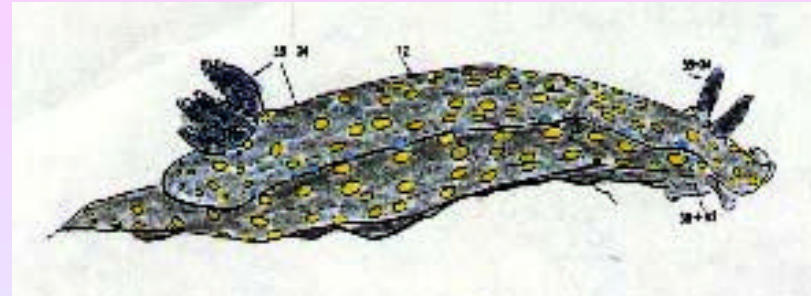
- Gulf of California



Hypselodoris ghiselini

Dorididae family

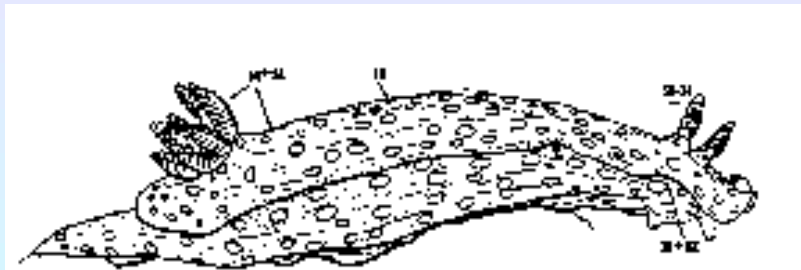
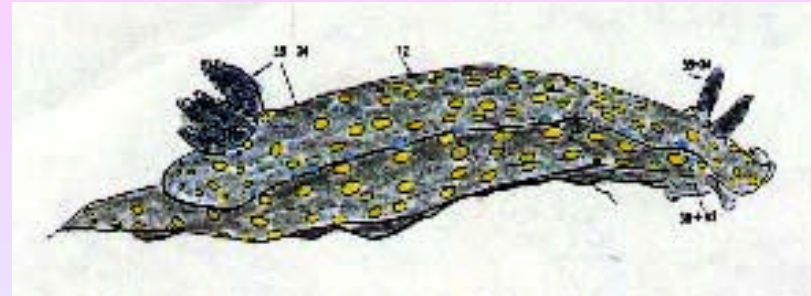
- Gulf of California
- To 69 mm



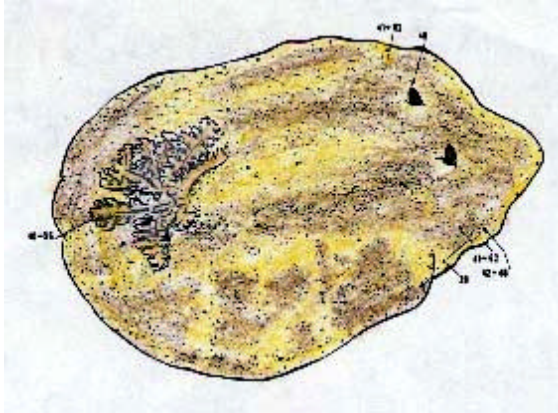
Hypselodoris ghiselini

Dorididae family

- Gulf of California
- To 69 mm
- Navy blue color with yellow spots. Blue spots along the notal edge.

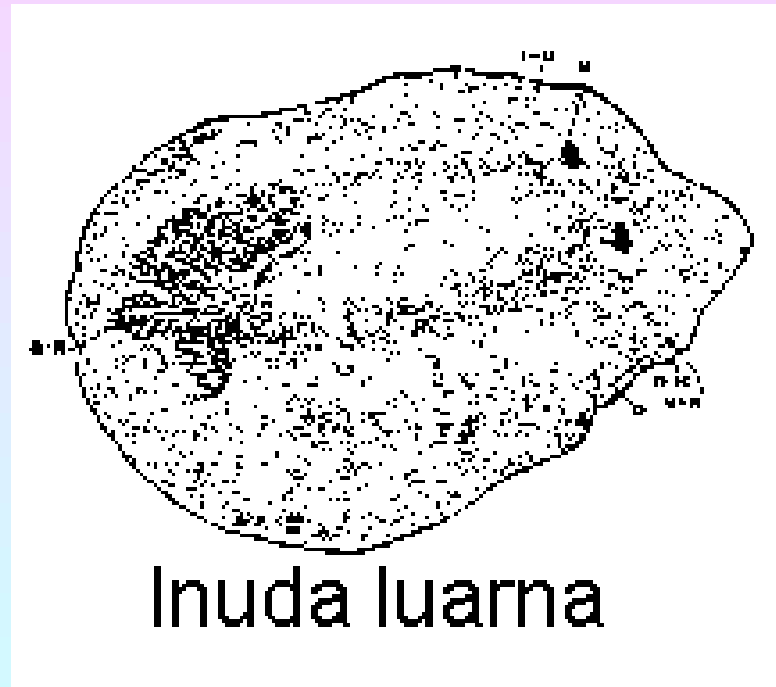


Hypselodoris ghiselini



Dorididae family

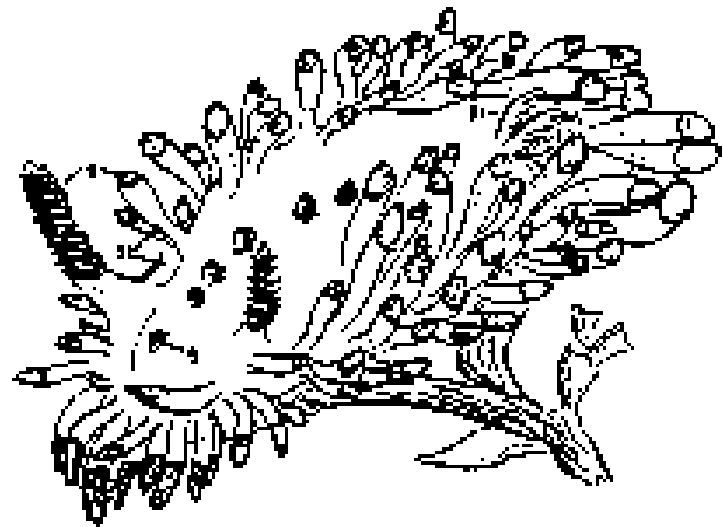
- Gulf of California
- To 27 mm
- Cream color with large yellow brown blotches. Rhinophores brown and gills pink.



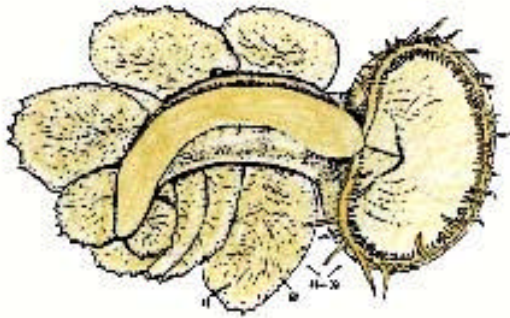
Inuda luarna

Polyceratidae family

- Gulf of California, Baja to Vancouver Island, B. C. Canada
- To 20 mm
- White body with orange or red rhinophores and tips of marginal processes and knobs on dorsum.

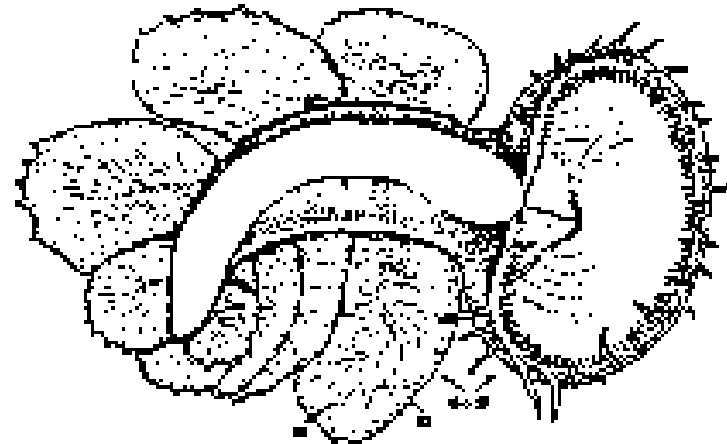


Laila cockerelli



Tethyidae family

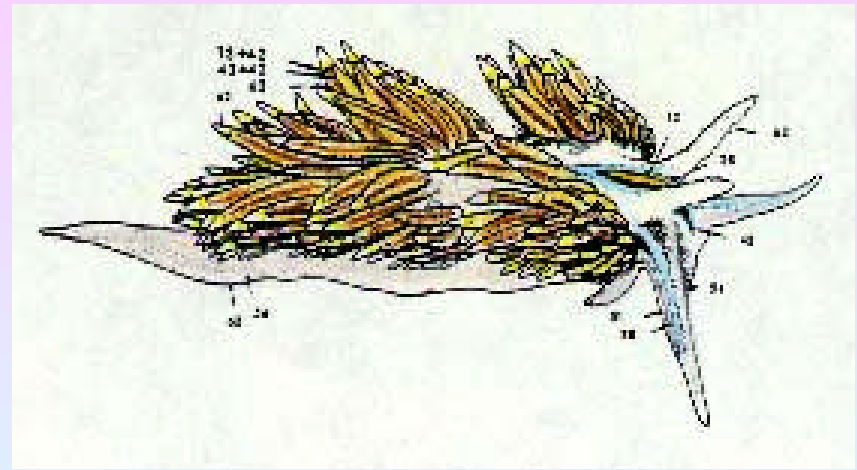
- Gulf of California, Baja to Kodiak Island, Alaska
- To 37 mm
- Swims by lateral side to side motion.
- Translucent pale yellow.



Melibe leonina

Facelinidae family

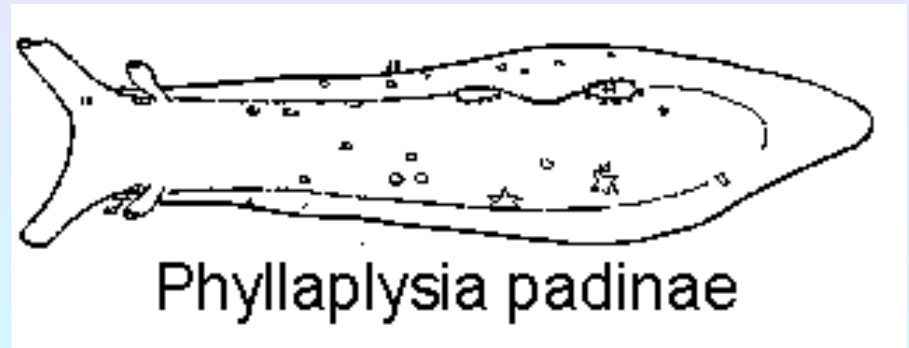
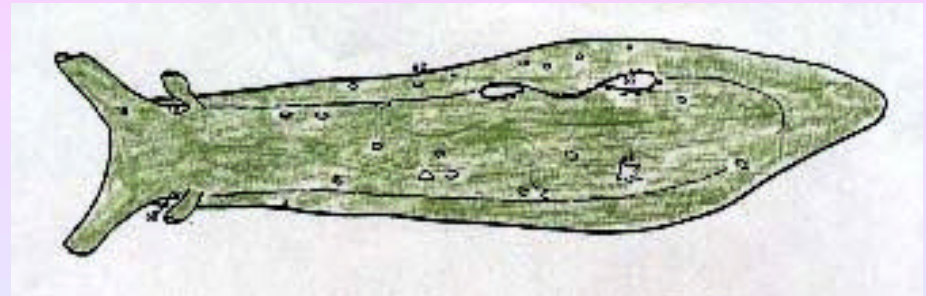
- Central Baja to Sitka, Alaska
- To 55 mm
- White with blue lines and yellow lines. Cerata have light burnt umber and chrome orange.



Phidiana crassicornis

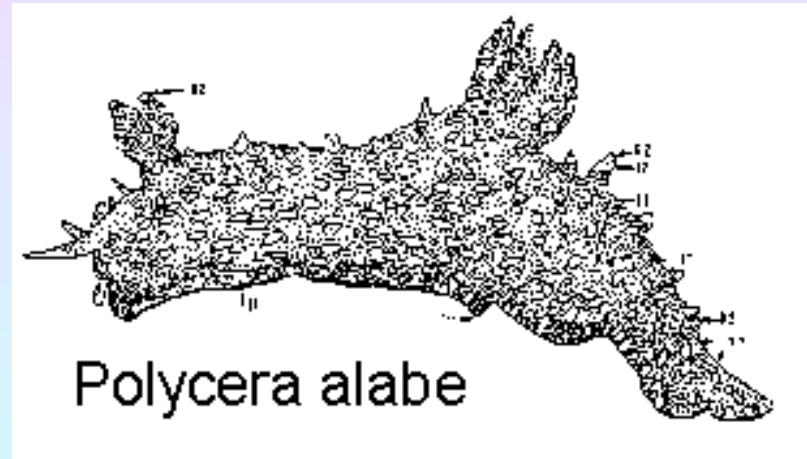
Aplysiidae family

- Gulf of California
- To 45 mm
- Lives on Padina algae
- Olive-green translucent color as is the algae it lives upon. Some darker mottling.



Polyceratidae family

- Gulf of California to Isla Cedros, Baja
- To 25 mm
- Nearly black with orange spots.
Colorless projections over body some with yellow tips.



Gymnodorididae family

- Gulf of California
- To 300 mm
- A Predator
- Yellow ochre with 5 black stripes lined with blue-green borders. Oral area is cobalt blue.



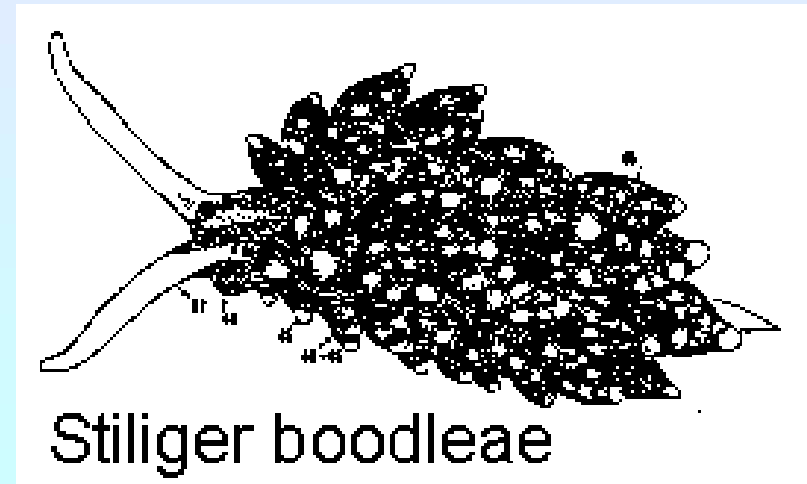
Dorididae family

- Chile to Vancouver Island, B. C. Canada
- To 30 mm
- On orange sponge.
- Orange-yellow color with some mottling.



Stiligeridae family

- Puerto Penasco, Sonora, Mexico; Japan
- To 5mm
- Black with light gray head tentacles. Papillae tipped with brown.





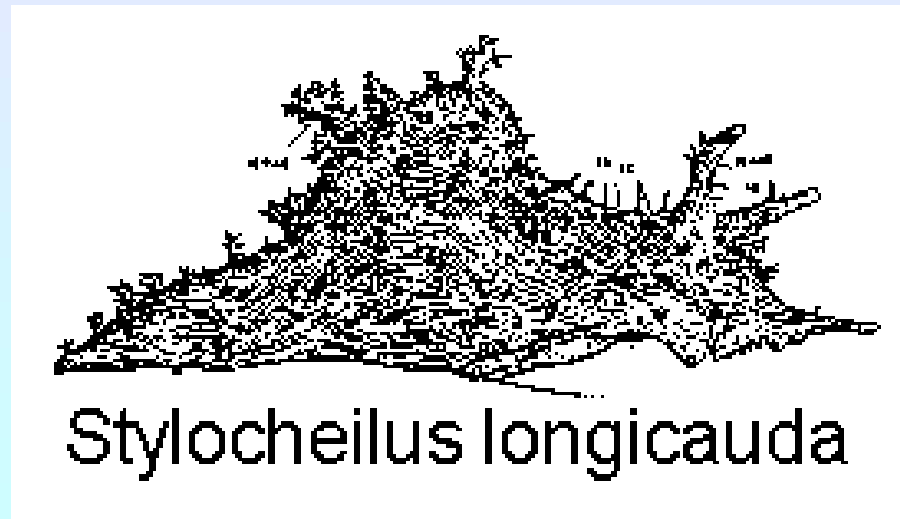
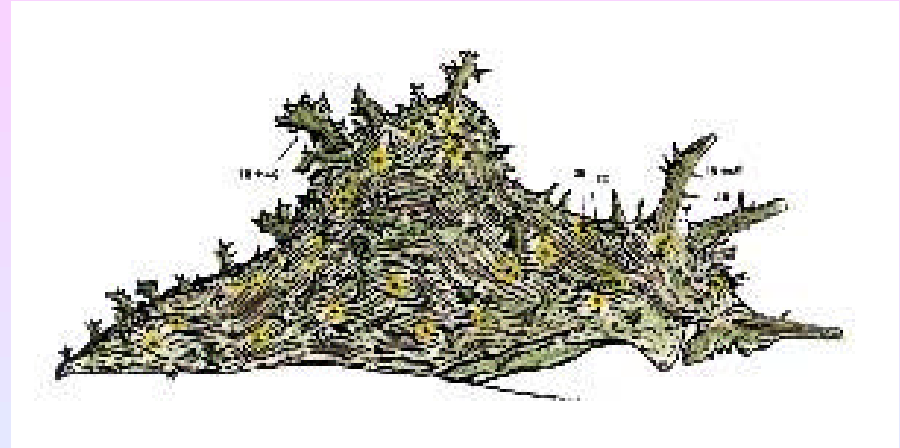
Stiligeridae family

- Gulf of California to British Columbia, Canada
- To 11 mm
- On red algae
Polysiphonia pacifica.
- Transparent red-brown body with splotches of same color.



Aplysiidae family

- Gulf of California;
New Guinea
- To 35 mm
- Brown striae and blue
ocellar spots
surrounded by orange
circles.



Gymnodorididae family

- Gulf of California
- To 80 mm
- Yellow ochre with four areas of turquoise areas outlined in black.
- Secretes large amounts of mucus because it is a prey animal.



Tambja abdere

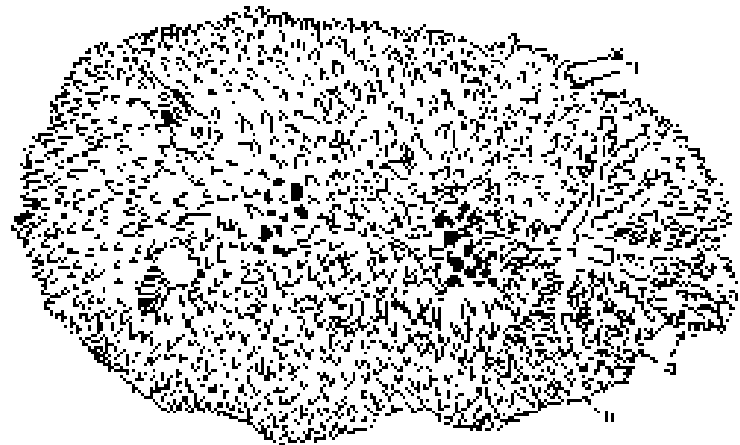
Gymnodorididae family

- Gulf of California
- To 50 mm
- A prey animal, swims by lateral bending of the body rapidly.
- Yellow ochre with turquoise blue outlined in black.

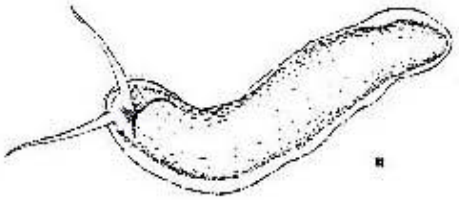


Dorididae family

- Isla Natividad, Baja to Carmel, California
- To 28 mm
- Bright orange or yellow. Brown spots medially.

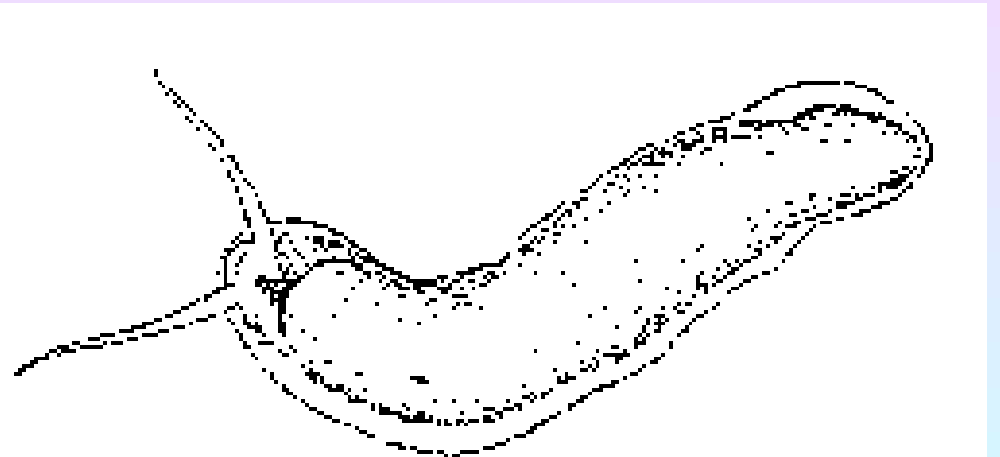


Thordisa bimaculata

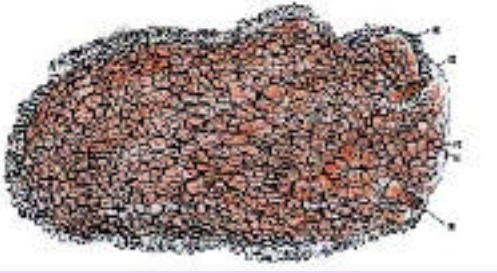


Titiscaniidae family

- Gulf of California to Canal Zone, Pacific ocean
- To 25 mm
- White with whiter glands on sides.

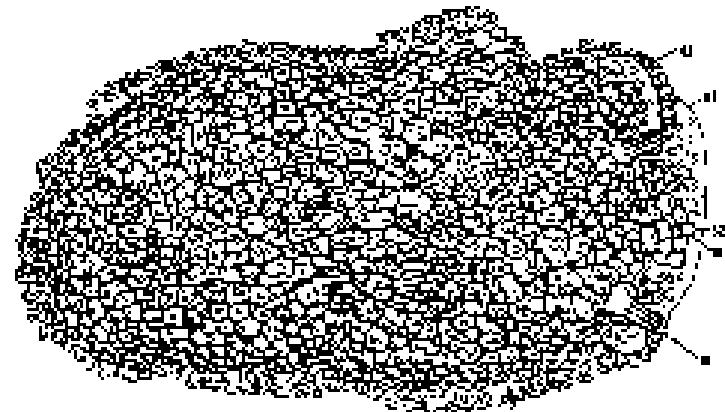


Titiscania limacina



Tritoniidae family

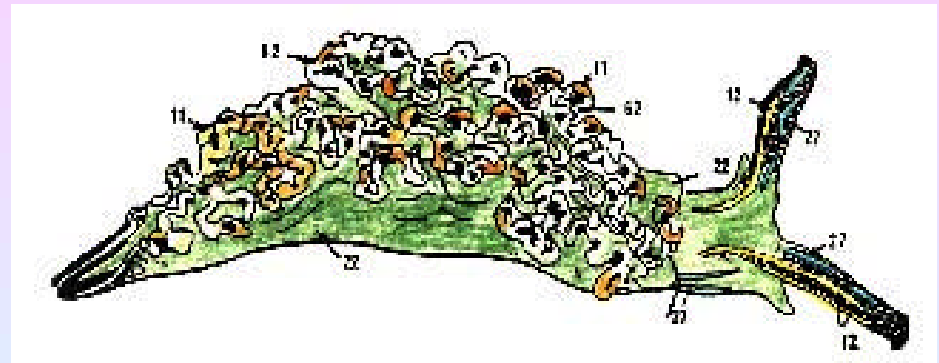
- Catalina Island to Unalaska
- To 300 mm
- Pale yellow with tinge of pink.



Tochuina tetraquetra

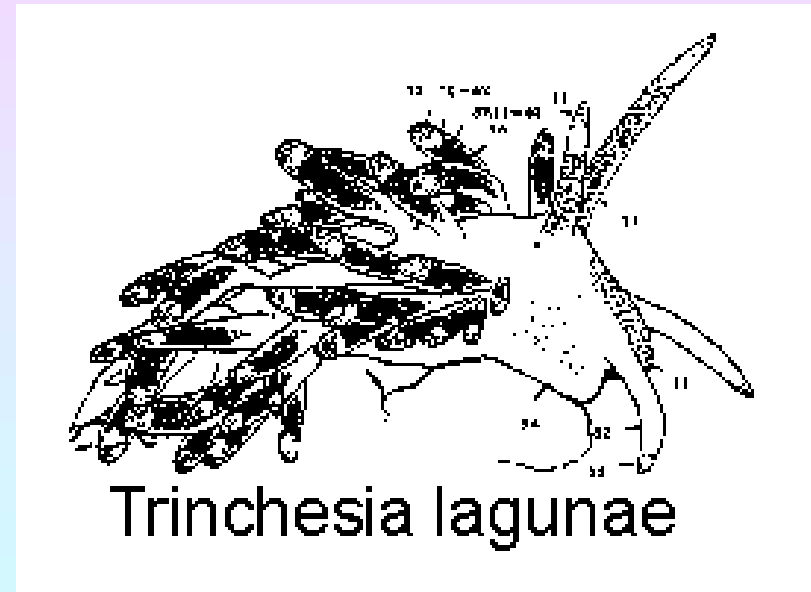
Elysiidae family

- Gulf of California
- To 35 mm; 100 mm
- Light green pink or blue spots medially, markings of black, orange on margins of back. Some blue on front tentacles.



Cuthonidae family

- Upper Baja to Marin County, California
- To 12 mm
- Translucent gray-white head orange tip of cerata scarlet.



Polyceratidae family

- San Diego to Vancouver Island, Japan
- To 120 mm
- White body and other parts of body orange.

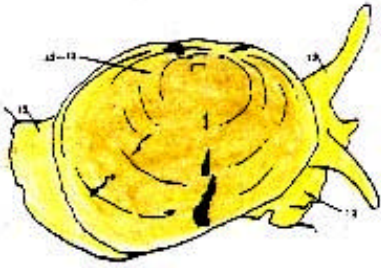


Triopha carpenneri

Tritoniidae family

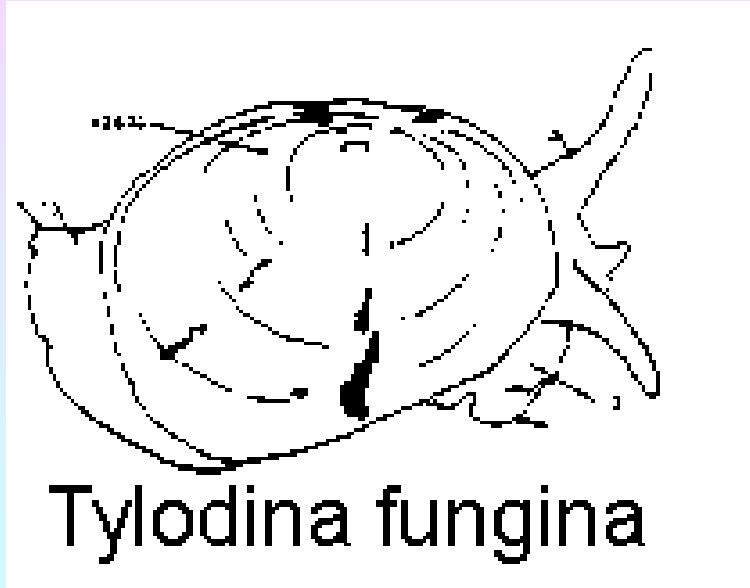
- San Diego -Vancouver Island; Japan
- To 75 mm
- Translucent white or orange body and opaque white lines on dorsum and edge of foot.





Umbraculidae family

- Galapagos Islands to Santa Barbara Island, CA
- To 35 mm
- Lives on yellow sponge, Veronongia
- Straw yellow with some dark markings.

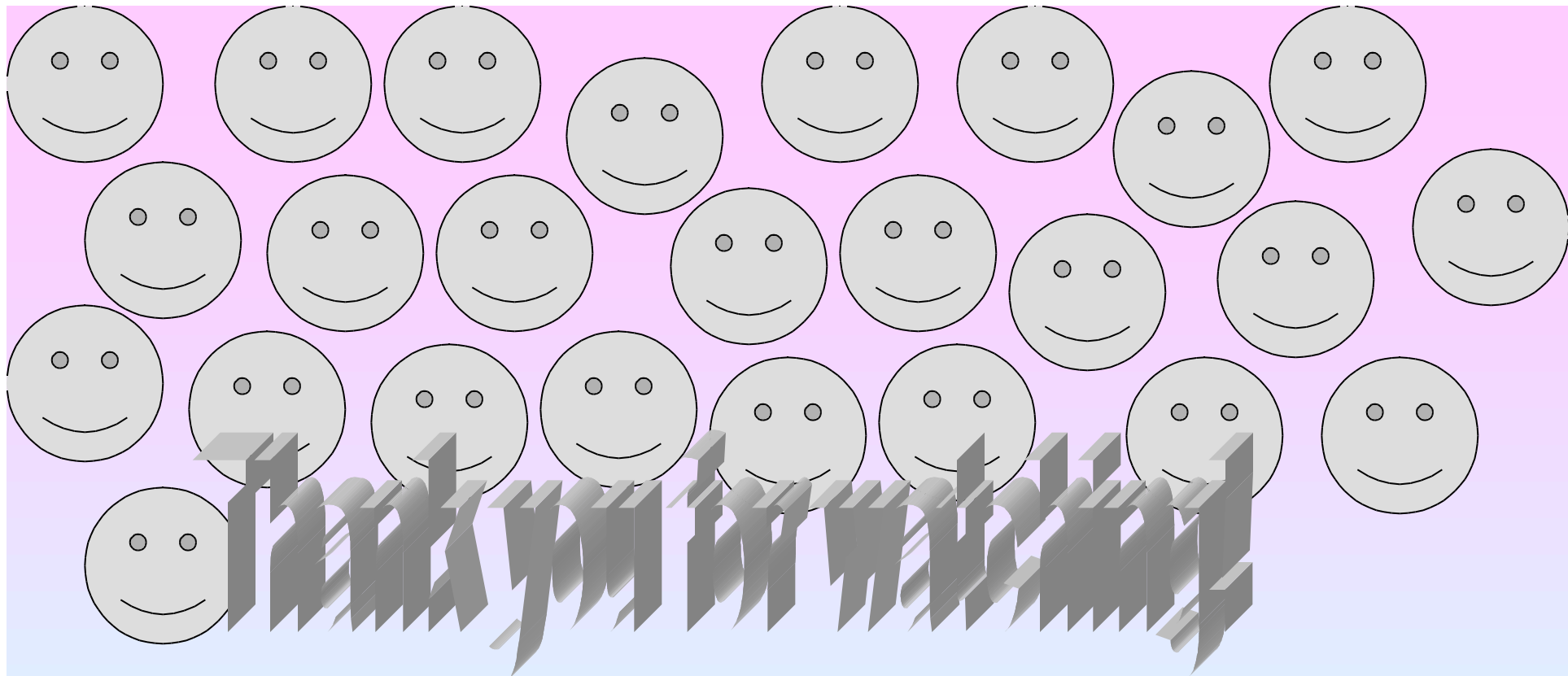


1997 One: Southern California Unified Malacologists, San Diego State University



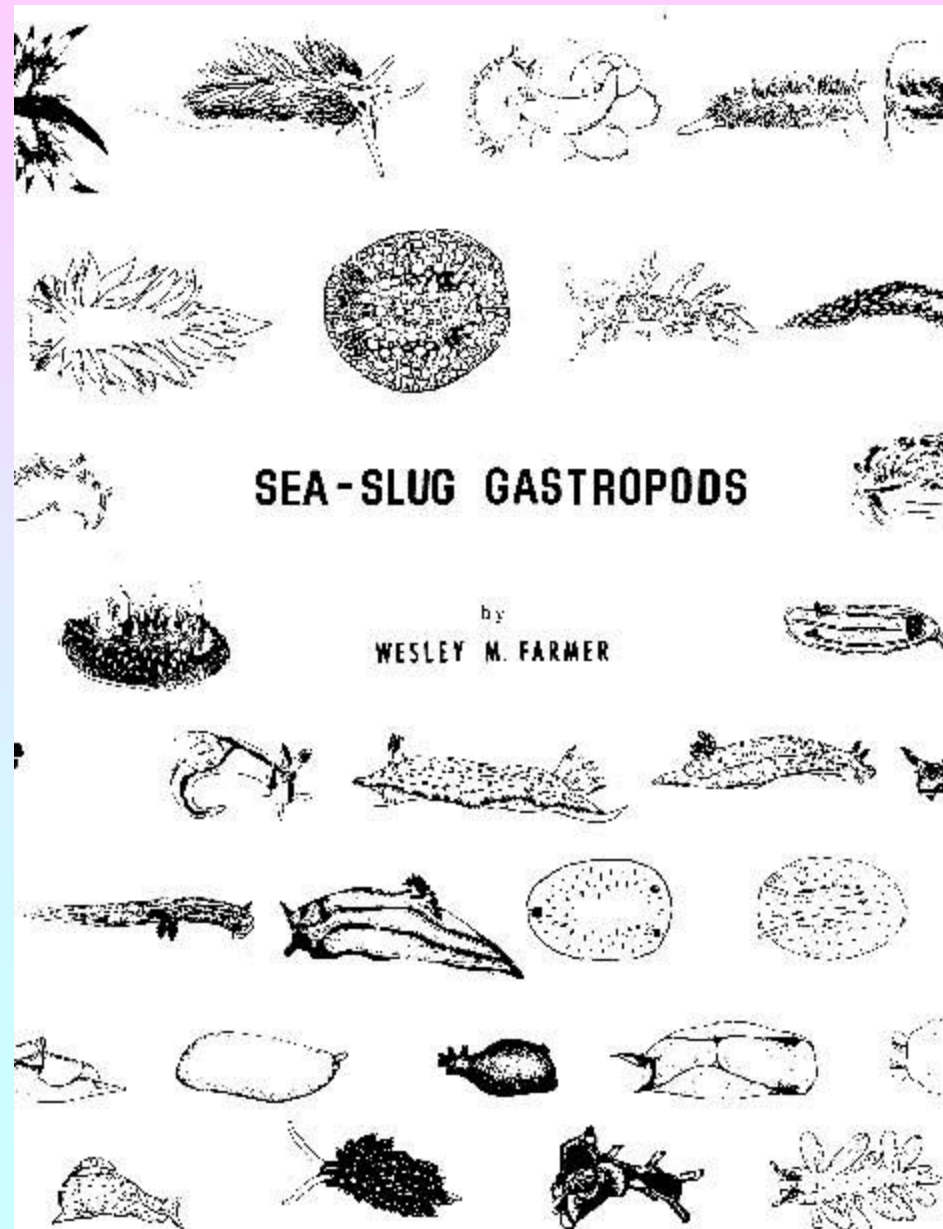
1998_Two: Southern California Unified Malacologist, Los Angeles County Museum





Copyright 1999 Wesley Farmer

Less than 50 copies of this book are still available should you like to like one on your book shelf.



Hyperlink to Opisthobranch sites

Hyperlinks to Paleontology sites

- **M. D. Miller's, The Slug Site**
- Steve Long's Opisthobranch Newsletter
- Wes Farmer's Swimming mollusks
- Fossils in California sites
- More fossils web sites