

APACHE WELLS COUNTRY CLUB, INC.
NOVEMBER 21, 2007
SPECIAL "EMAIL" PUBLICATION

APACHE WELLS COUNTRY CLUB, INC.

DEAR AWCC MEMBERS,

We would like to present our current set of floor plans for the new AW Country Club building. The floor plans are found as an attachment to this email. The AWCC's Board of Directors have approved this concept.

The Golf Shop will be located over the existing basement. It will have offices for our Head Golf Professional, Bruce Taubert and our Executive Office Administrator, Linda Smith.

The bar/grill will be very nice. It will feature a small stage and dance floor.

The kitchen will now be located between the bar/grill and the Hall.

The Hall will be same size as the current Apache Hall, but it will seat more people due to the addition of a multi-purpose room which can be opened up for additional seating. There are also sets of French doors opening up to a covered patio area on the east side of the Hall.

A catering kitchen is also next to the Hall for events such as potlucks or special events. It can also double as a bar.

The Multi-Use room can be opened up or closed off for small meetings, card playing, private luncheons, birthdays, anniversaries, etc.

Also, notice that there is about 3000 square feet of patio area around the Golf Shop and the bar/grill areas.

The special assessment for this project will be no more than \$6,185.00 per certificate. This amount does not include any interest on long term financing. The Finance Committee is currently working on payment packages and options.

The first informational "Town Hall" meeting is scheduled for Wednesday, December 12, 2007, at 3:00 PM in Apache Hall. Another "Town Hall" meeting is scheduled for Wednesday, January 9, 2008, at 3:00 PM in Apache Hall. The vote on this project is scheduled for Friday, January 11, 2008, from 10:00AM to 2:00 PM.

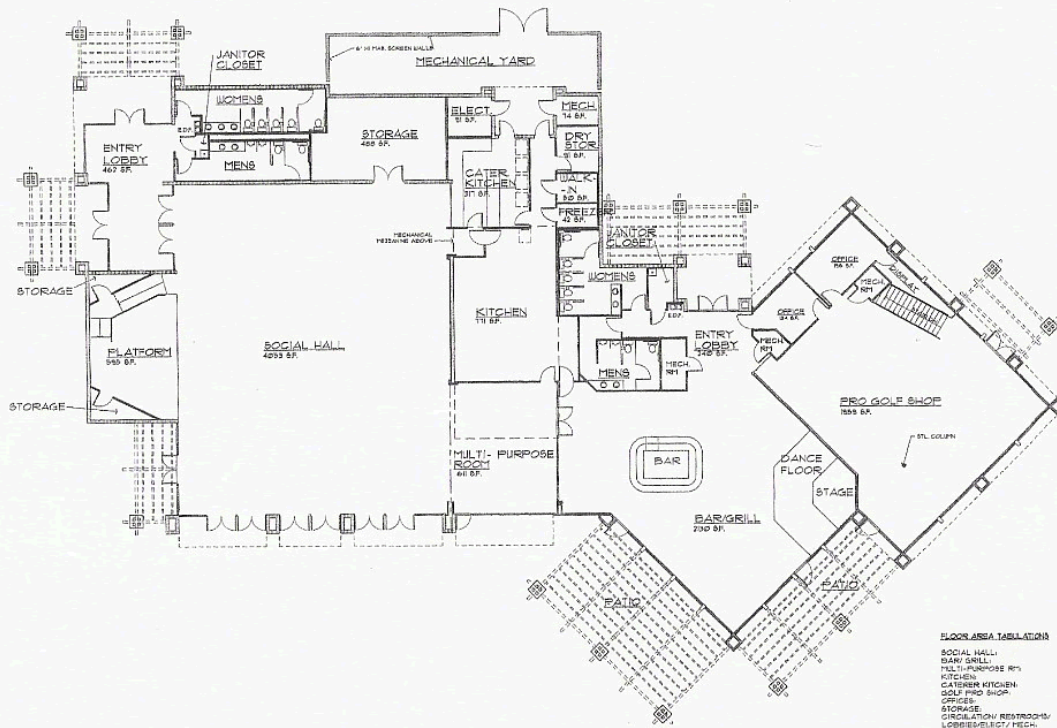
We hope this information contained in this email is helpful. The AWCC Board of Directors is available to you for your questions and concerns, please let us know when can assist you.

APACHE WELLS COUNTRY CLUB, INC. ... BOARD OF DIRECTORS

HELPING OTHERS

Marilyn Nusbish will be collecting clothing to give to our maintenance workers for their family and friends. If you would like to donate, please drop off men, women or children clothing to her back patio. I will be collecting till Dec. 15th.

2401 N. Snead Dr
Thanks for sharing.



PROPOSED FLOOR PLAN
SCALE: 1/4" = 1'-0"

FLOOR AREA TABULATIONS

SOCIAL HALL	4233 SF
BAR/GRILL	700 SF
MULTI-PURPOSE RM	88 SF
KITCHEN	524 SF
CATERING KITCHEN	371 SF
GOLF PRO SHOP	1853 SF
OFFICES	220 SF
STORAGE	400 SF
CIRCULATION/RESTROOMS	1576 SF
FLOOR AREA TABULATIONS	
BASEMENT	6307 SF (EXISTING)
PAN LEVEL	1978 SF
MECHANICAL/MEZANINE	246 SF
TOTAL FLOOR AREA	7157 SF