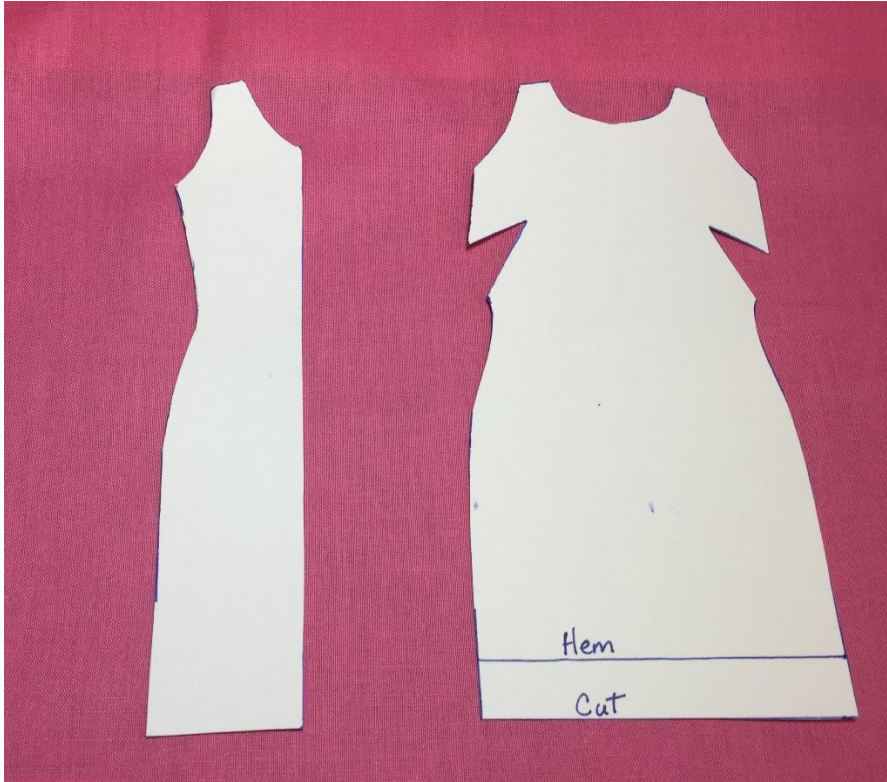


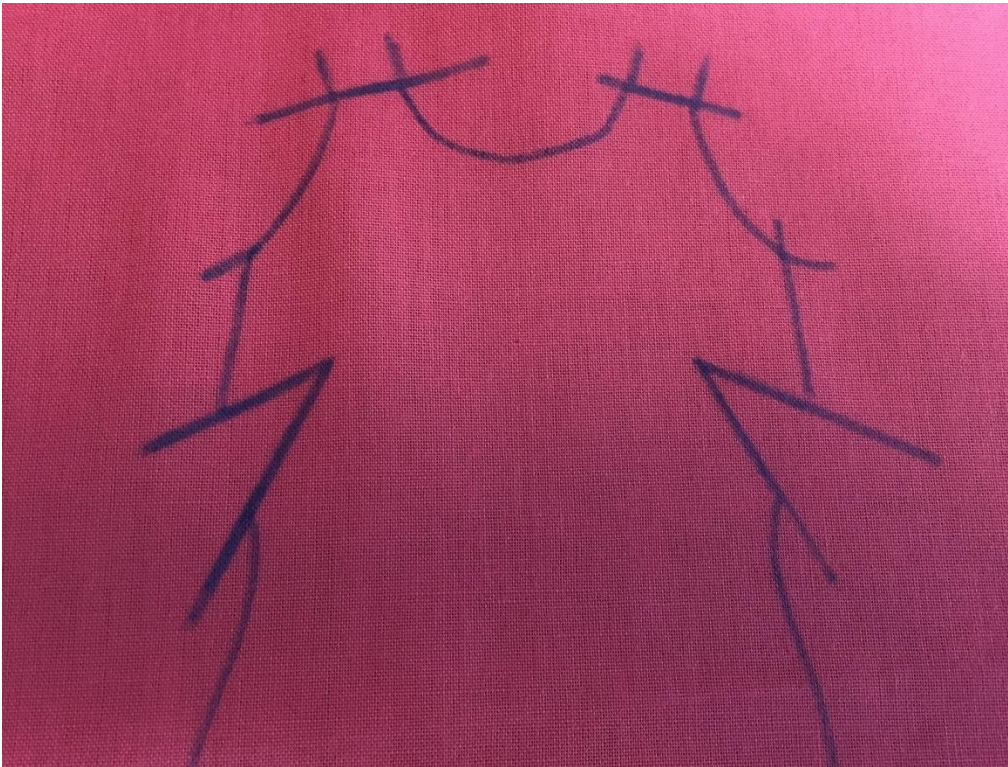
Pattern from PonyTailLane.com Lisa Barger



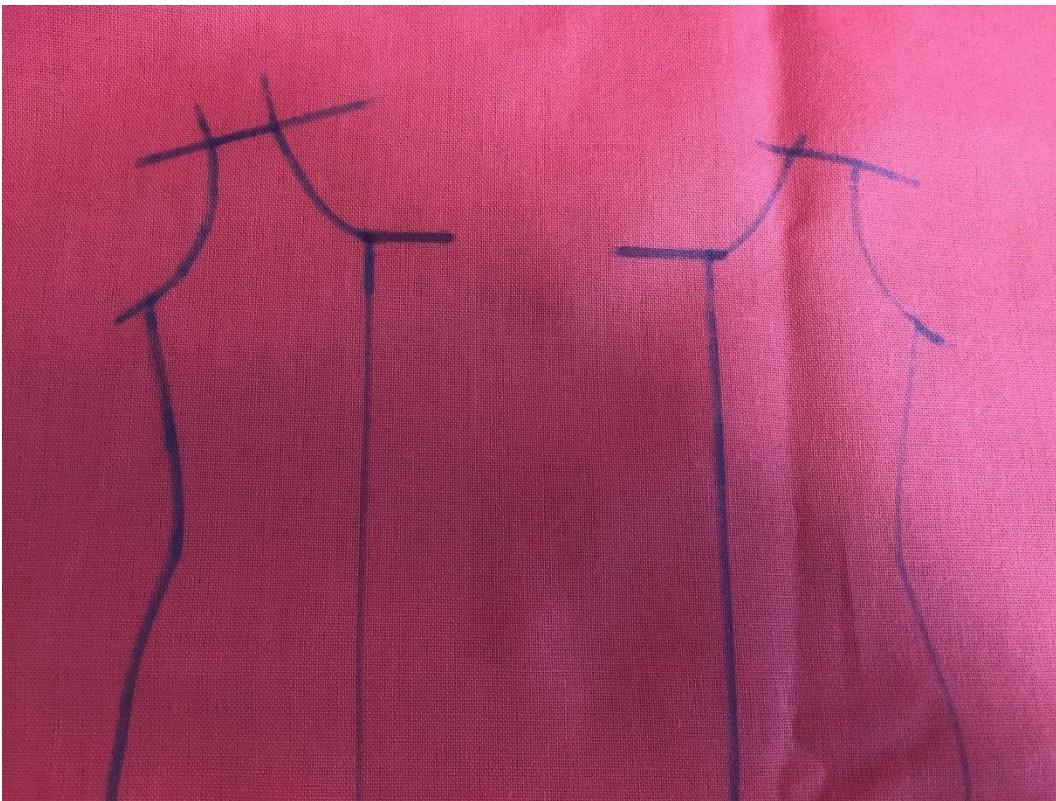
This is a pattern for a straight shift dress for the current, standard Barbie (2020). On Barbie's back, the date may say 1999, 2009, 2015, or 2019. This dress will also fit Petite Barbie and vintage Francie.



Outline the pattern onto the fabric using a Mark B Gone pen (or similar). Blue pens have ink that dissolves in water.



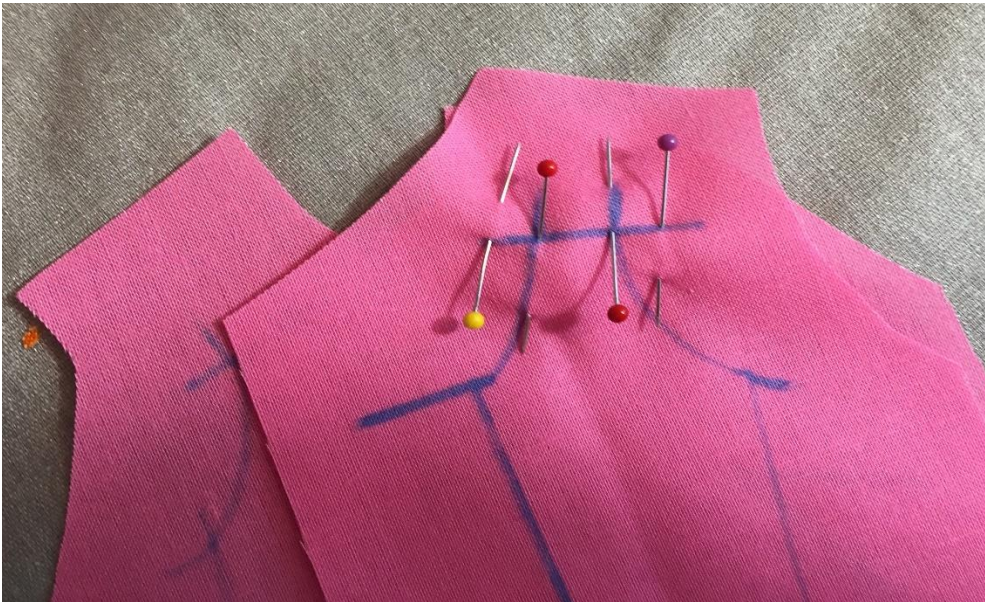
Extend the seam lines outward, so they continue beyond the edge of the pattern.



It is very important to extend the line on the edge of the back, top edge.



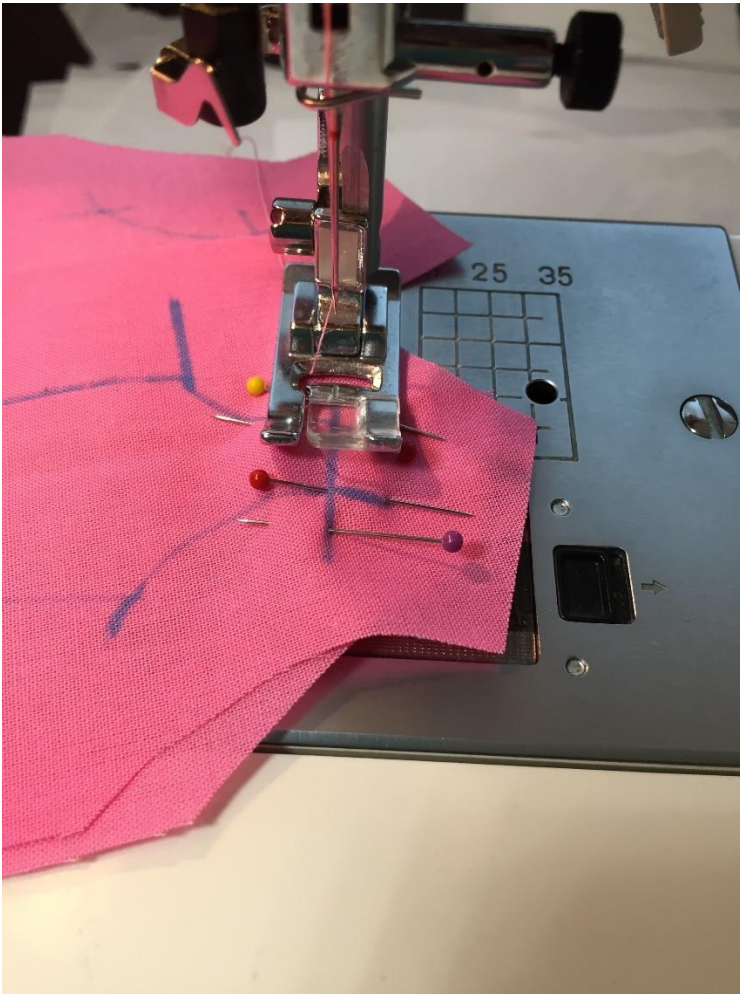
Cut out the pattern.
Leave a lot of fabric
outside of the lines
drawn.



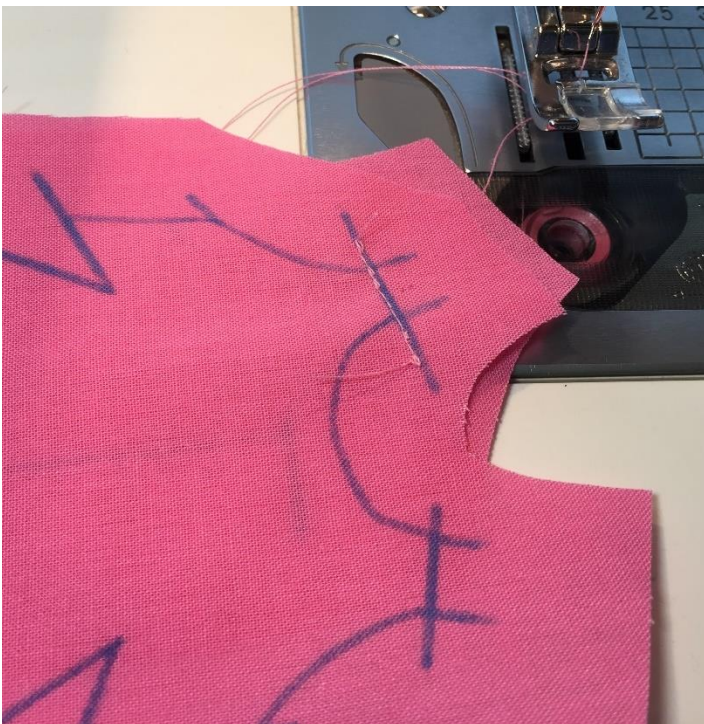
Pin the shoulder
seams together
(rights sides facing
each other). Make
the pins go in both
directions to keep
the fabric from
slipping. See that the
pin goes through the
line on each side.



This is the other
side of the pinned
seam.



Sew the shoulder seam.



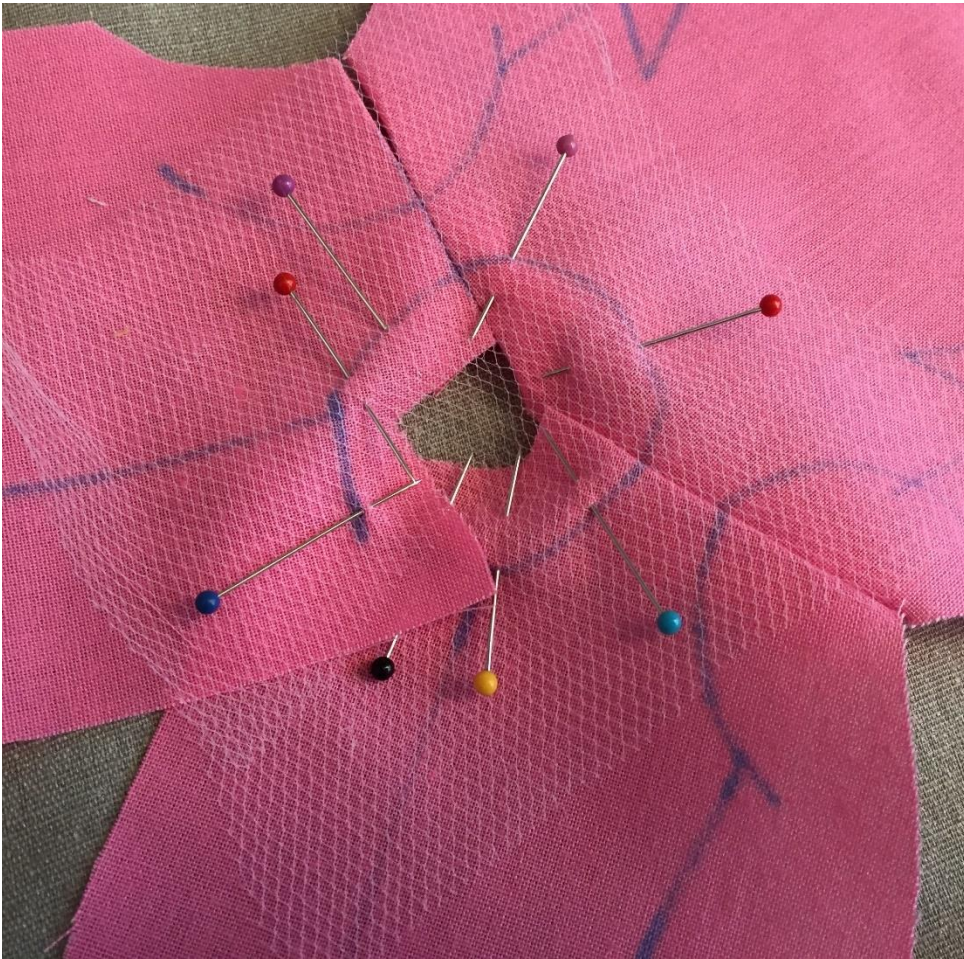
Here's the seam. It should be right on the blue line.



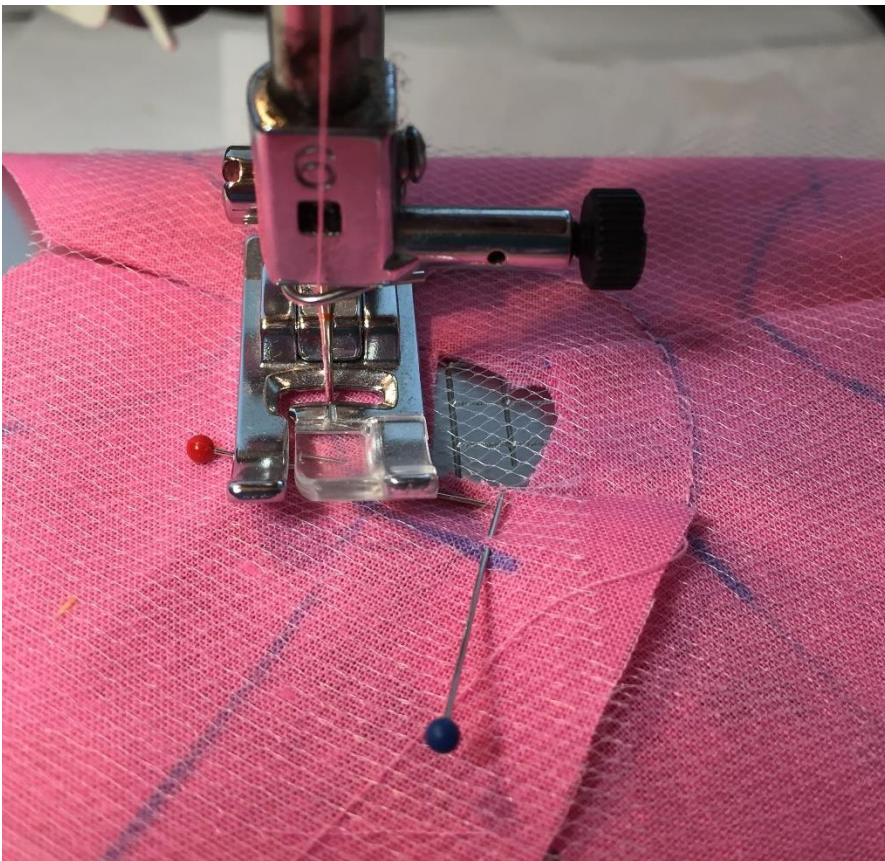
Now trim the seam allowance of the should seams and iron them down.



To hem the neckline, tulle will be used as the facing. Use tulle that is a tight weave. Place the tulle onto the “right” side of the dress.



Pin the tulle to the neck hemline.



Sew the tulle onto the neck hemline.



Trim the fabric and tulle very close to the hemline.



The tulle “facing” can be clipped (clipping the curve) to ease it as you fold it under.



Turn the tulle under and iron down the neck hemline.



Here’s the collar hemline pressed down and ready to be topstitched.



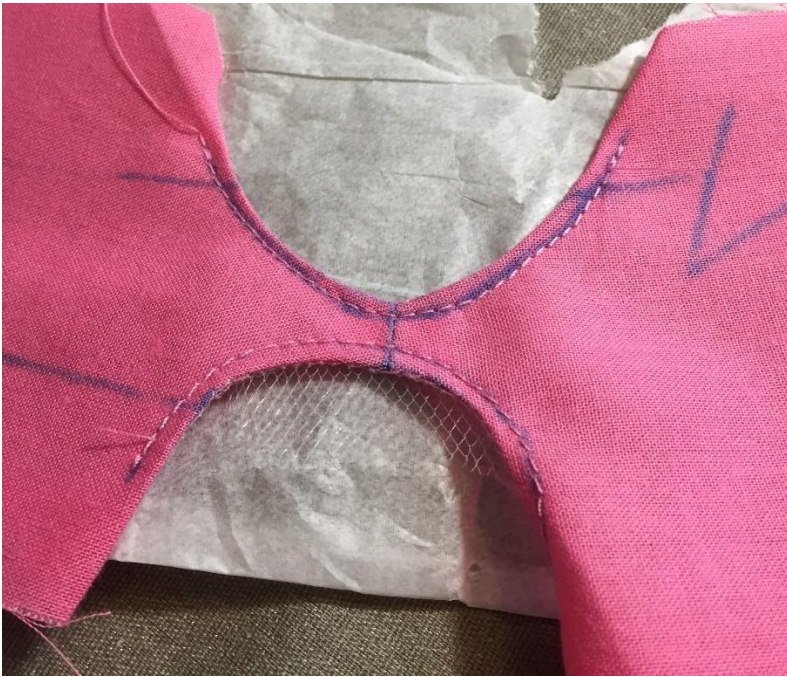
Draw a hemline on the collar.



Put tissue paper under the garment to help stabilize it for sewing. Sew the hemline on the blue guideline. Sew slowly! Have the sewing machine in the "needle down" position, so when you stop, the needle stays in the garment, and you can lift the foot so you can turn the garment.



Trim the tulle on the
underside of the collar. Collar
is hemmed!



Hem the armholes using the same tulle, tissue paper, draw the hemline method as used on the collar.



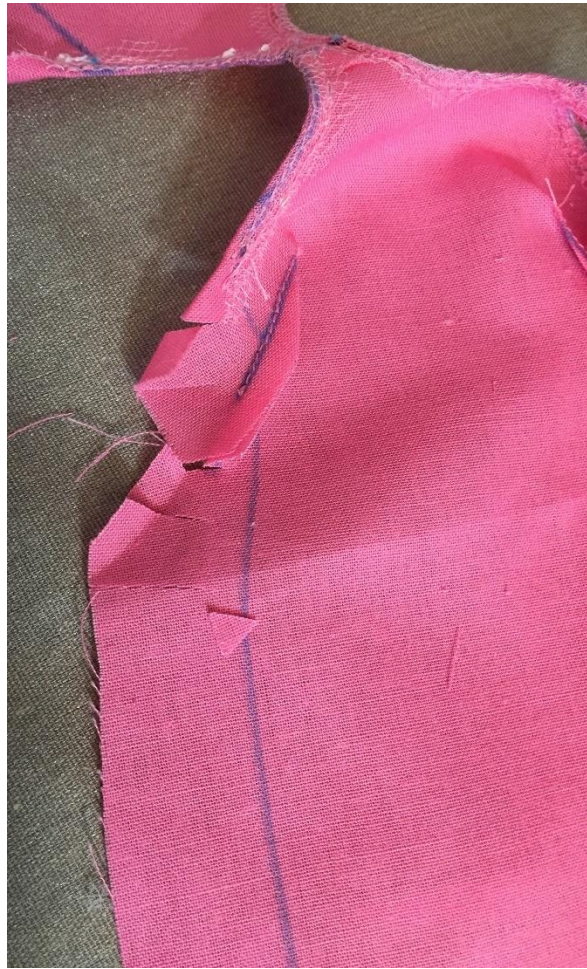
Sew the darts on the front bodice. Be sure the pin goes through the line on each side, and turn the pins so they are not going the same direction.



Here's the sewn dart. Be sure the seam was exactly on the line on both sides.



Here you can see the darts sewn, and the hemmed neckline and armholes.



To prepare to sew the side seams, clip the curves where the seam curves.



Pin the side seams. Be sure the pin goes through the line on both sides.



Sew the side seam.



If you want to have an edge finish, you can sew a seam on the seam allowance, then trim with pinking shears. Or, you can cut (pinking) close to the edge and brush some “Fray Check” on the edges.



Try the dress on the doll, and pin the back center seam just to check it.



Mark the hemline. The first line from the bottom is $\frac{1}{4}$ ", then the next line up is $\frac{1}{2}$ ". Bend the hem on the first line and iron down. Then, turn the hem again, and iron down. Of course you can change where the hemline is, for a shorter dress.



Hem is pressed down.
(At this point, you can
sew the hemline down.)



If you are using Velcro or
snaps, then sew the back
center seam from bottom to
the point for an opening.
You will plenty of fabric to
make folds for the closure.

Zipper closure:

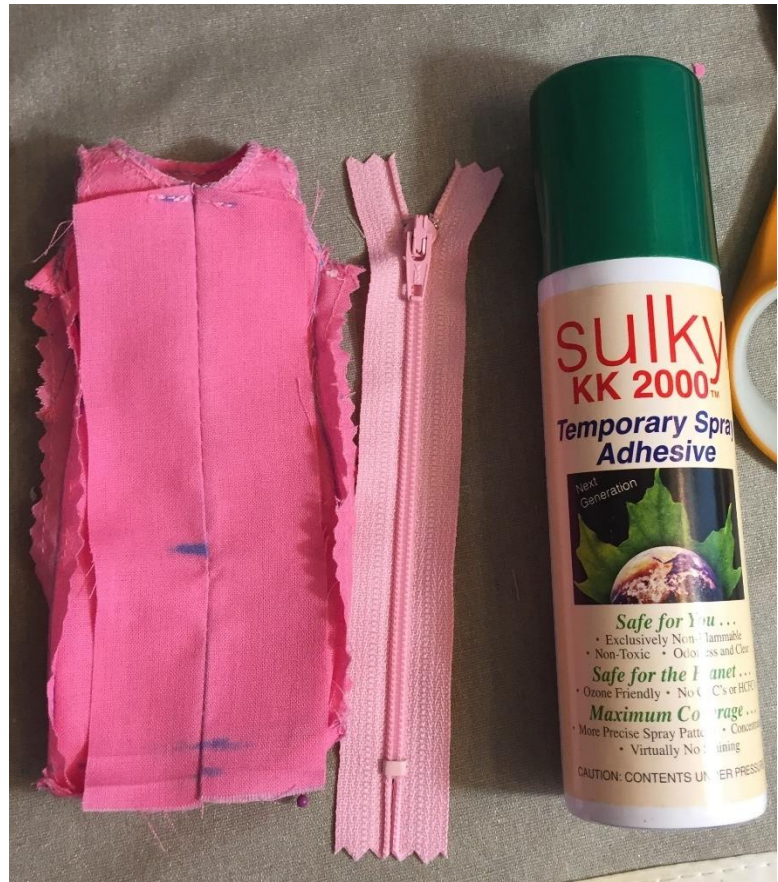
Pin the back center seam
lines together. Notice the
pins in alternating positions.
Unroll the pressed portion of
the hem at the center back
line. I've pinned down the
hem on the front portion of
the dress. Mark where the
zipper will start in the center
back seam.



Starting at the bottom, sew the back center seam up to the mark. At the mark, re-enforce the seam (going back and forth the for a few stitches). Above the mark, use a long, basting stitch to stitch up to the top.



Here's the center back seam. Regular stitches below the mark, basting stitches above the mark.



Press the sides of the center back down, and get a very crisp fold. My ironing board to go through the dress is a wood ruler with some muslin glued down. Get Sulky temporary spray adhesive and a zipper that is longer than the center back opening (at least 5" long, if you are using a #3 slider skirt zipper). I use the #3 size for clothes meant for kids to play with. Spray the front of the zipper with the Sulky, and spray the back of the dress with Sulky.



Lay the zipper on the center back seam, positioning the teeth right on the seam line. The adhesive will hold it in place.



Now you will sew the zipper to the seam allowance of the center back, use the zipper presser foot.

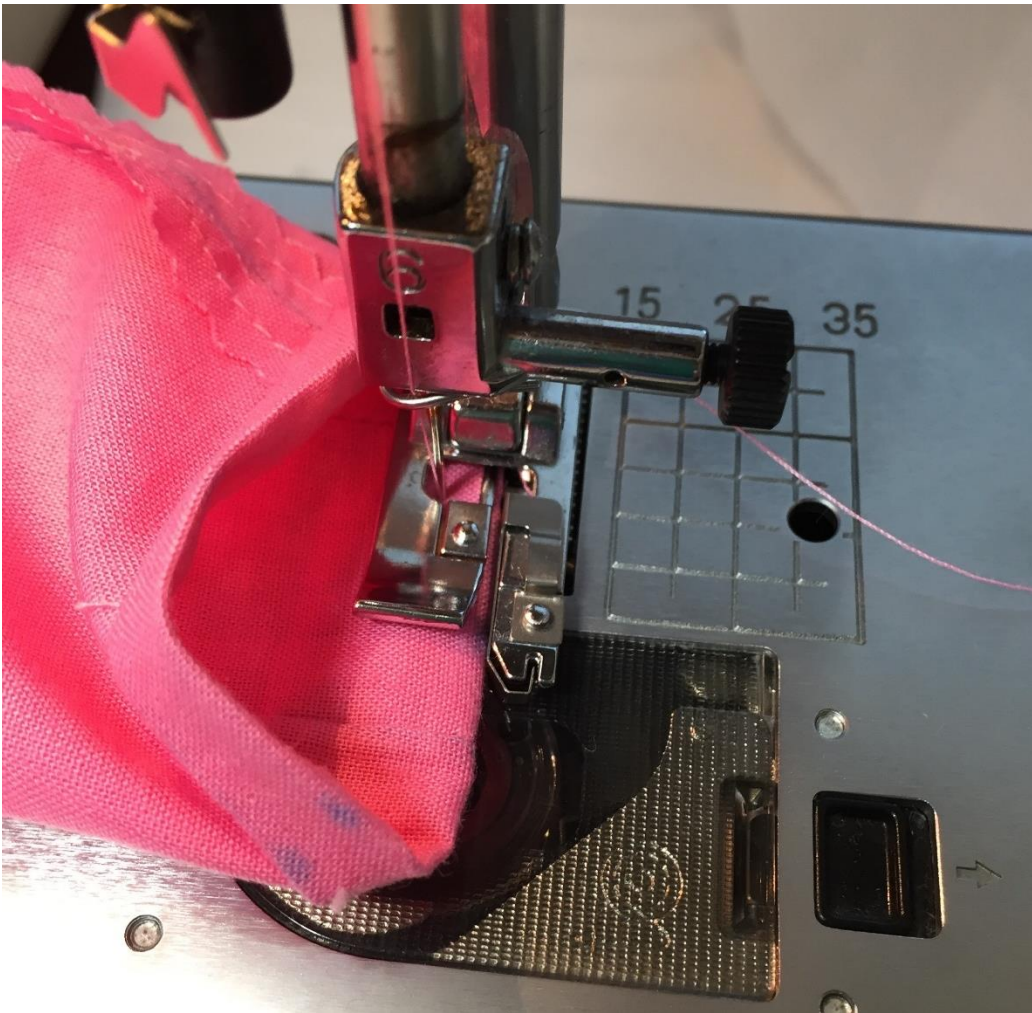


You have sewn the zipper to the seam allowance as you can see on the picture on the right. After sewing the zipper, I sewed a straight seam next to the zipper and then trimmed with pinking shears.

While the dress is still inside out, the hemline will be stitched.



Go back to the hemline and re-press the hemline down. Dress is still inside out.



Top stitch the hem by placing the dress on the machine inside out. This is a hemline presser foot. It will keep the hemline straight! Go very slowly!



Turn dress to right side out. Use a seam ripper to remove the basting stitches on the center back seam. The zipper is revealed.



Draw a straight line next to the zipper, on the outside. This is where you will top stitch the zipper to the dress. You will not be able to go to the bottom of the zipper.



After drawing the lines, unzip the zipper.



Put tissue paper under the zipper, and top stitch on the line. This is a zipper presser foot.



Here's the zipper after top stitching it.



To make the top stop, and sew the top of the zipper down, you will be going over the hemline at the top of back of the dress.



Put tissue paper under the dress, the stitch on the top hem line, keep going till you pass the zipper teeth. To make a "top stop", you will sew a few stitches back and forth over the teeth.



Both sides of the zipper have been sewn down and a top stop created with the stitches.



Cut the zipper off, just above the stitched top stop.



The dress was rinsed in water to clear away the blue marker lines. Now seal the edge of the zipper at top, and the top stop (the one made with stitches) with clear fingernail polish.



Dress is finished! I hope this works for you or you got some sewing tips that help you. Lisa Barger www.ponytailane.com