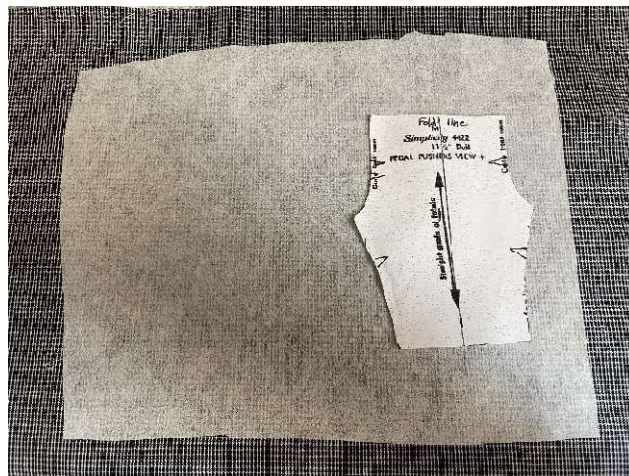
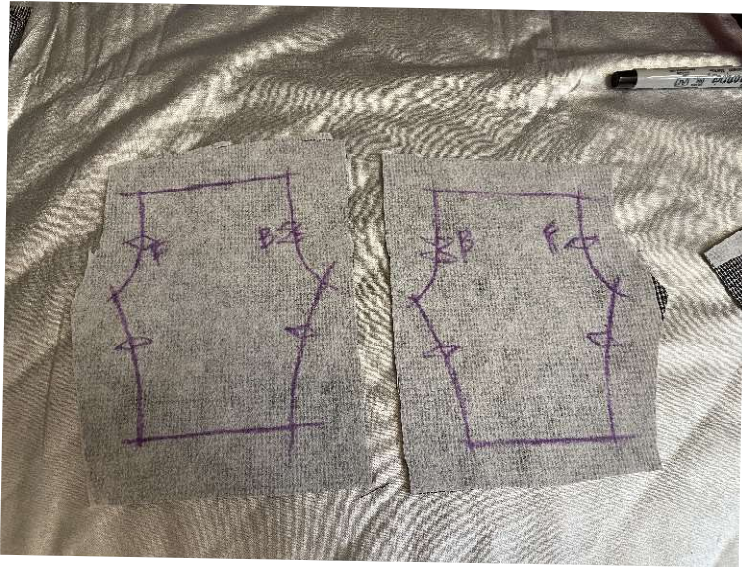


Barbie pants with elastic waist, leg seam on inside. How to sew with dark fabric.

Simplicity 4422



Press on some lightweight interfacing so the dark fabric has a light interior which will show the outline of the pattern. Lay the pattern on the interfacing, and outline with a fabric marker (disappearing or water soluble.)



Be sure to flip the pattern over for the second leg.

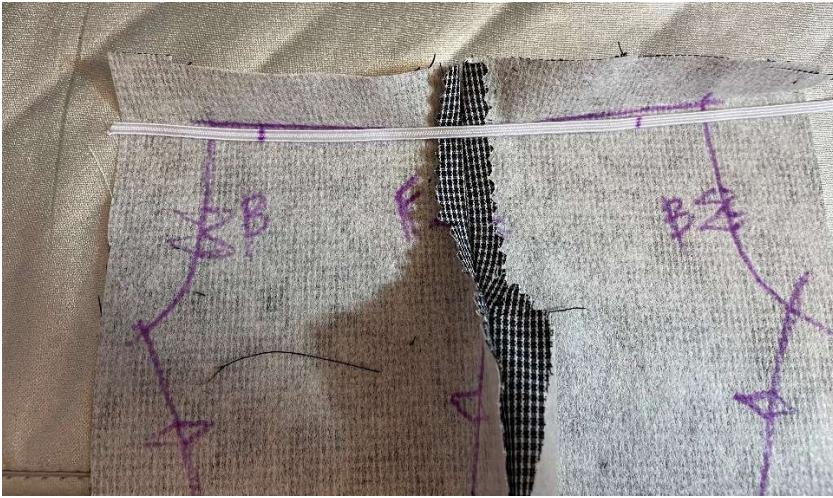


Sew the front seam of the pants.



Press open the seam allowance and trim (I used pinking shears).





Press down the top fold. Lay elastic on pants just below the fold crease. (I had marked the elastic for 4", but did not use it later, so ignore that.)

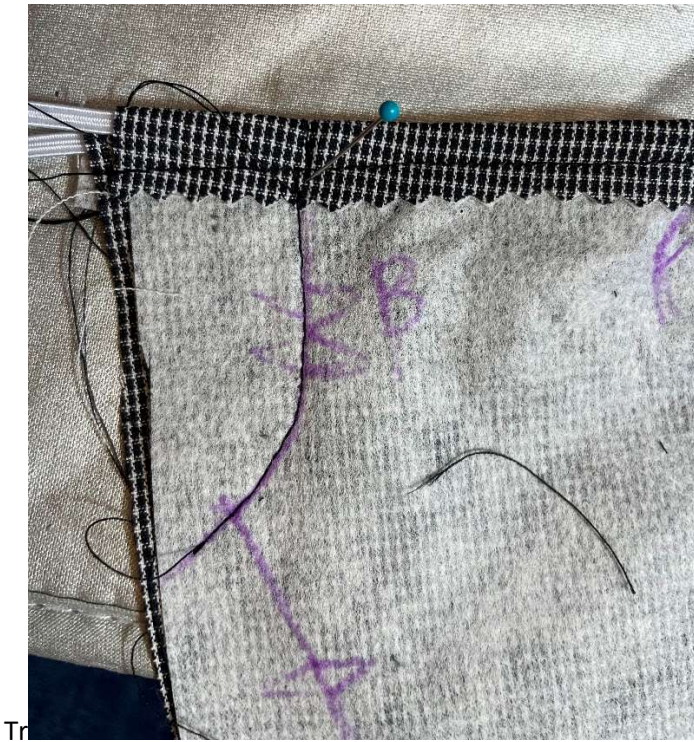


Pin the fold down, be sure to pin just below the elastic so you don't sew the elastic down. Sew the top casing seam (using the pins to guide you so you don't sew over the elastic!)

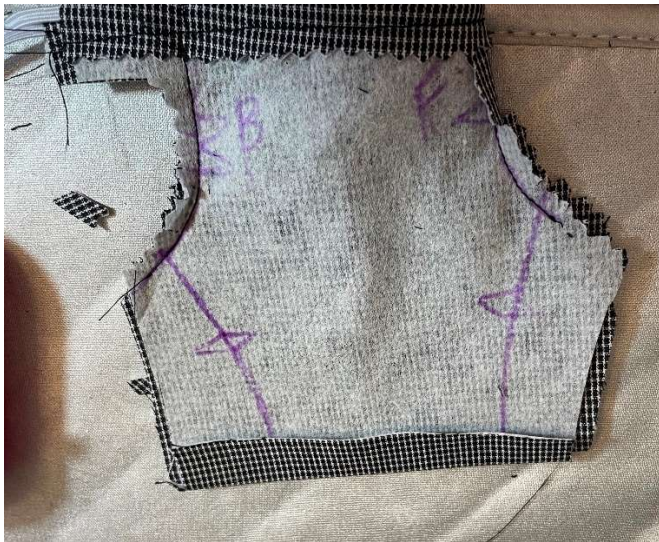


Pin the back seam together.

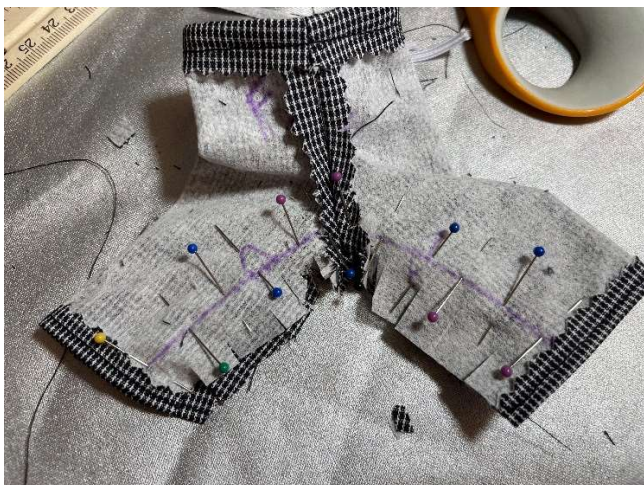
Sew the back seam, stopping just below the elastic.



Trim the seam allowance on the back seam. Now hem the bottom of the pants.



Pin the inside leg seam together. Be sure to clip the curve around the crotch. Sew the seam.





Put the pants on the doll, inside out.
Pull the elastic to the proper fit and pin.



Finish the back center seam, sewing over the elastic. Then trim the allowance. Turn pants so the outside is outside. You are done!



This pattern was made for the old body, but here is the outfit on a 2016 Barbie body. The fit is okay.

