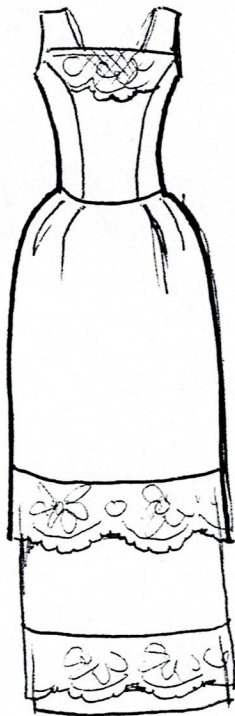


Tiny Zippers

"Blue Pattern Set"

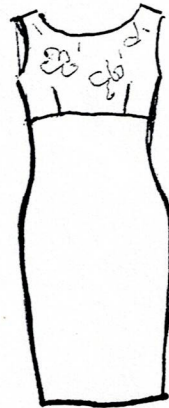
Sewing patterns in vintage styles to fit your 11 1/2" sized fashion doll,
(such as the vintage Barbie®)



View 1



View 2



View 3



View 4

Tiny Zippers, PO Box 1031, Coppell, TX 75019
www.tinyzippers.com copyright© 2002

Tiny Zippers is not affiliated with any doll or toy company. "Barbie®" is a registered trademark of Mattel Inc.

Tiny Zippers

General Instructions:

- 1) Trace or copy the patterns, leaving your original intact. Please do not make copies of the patterns for others, they are copyrighted materials.
- 2) Pattern pieces are designed for you to cut out the paper pattern as shown, lay it on the fabric, trace it on the fabric using a fabric marking pen (evaporating or water soluble). Then, **CUT THE FABRIC OUTSIDE THESE LINES**. These are NOT the cutting lines, these are the lines to **SEW** or **FOLD** or **HEM**. Give yourself as much room outside the lines as you want in order to handle the garment. You can always trim away excess fabric after you have done the sewing!
- 3) Be sure to sew or hem or fold **EXACTLY** on the lines. When placing 2 pieces of fabric together to sew a seam, push some pins through the lines on both sides to make sure you have the lines matched up **EXACTLY**!
- 4) When using a gathering seam, make 2 gather-seams above the waist (or whatever) seam line, giving yourself plenty of room (so you don't have the gathering seam end up showing on the outside!). You can trim the excess after you have attached the skirt to the bodice. Set the tension tighter on your machine, and the length to 4 (long). Use a steam iron to press down the gathers before attaching skirt to the bodice. I prefer to turn the seam allowance up toward the bodice. It's a nice finish to top stitch right at the waist seam, to hold the allowance in place.
- 5) Whenever you are sewing or hemming a curve, it will help to clip the curve. See drawing. When hemming, once you've clipped the curve, if you spray some Sulky Temporary Spray adhesive on and then fold back the hem, the fabric will stick and stay in place until you've hemmed it.



- 6) **Straps** - when attaching straps - you can sew the strap to the front of the bodice, finish the garment completely, then just use a small dot of glue (such as Tacky glue or Liquid Stitch) to secure the back of the strap to the back of the bodice. Put the garment on a doll, then position the straps in the back, and then glue. That way, the straps are in the exact position they need to be for a good fit.
- 7) Use tissue paper as a sewing stabilizer. You can put a piece of tissue paper under your fabric and sew, then it tears away easily after sewing. This is handy when you want to topstitch close to the edge.
- 8) Finishing - the "Closure"! If sewing in a **zipper**, check the back center seam line for correct placement (wrap the garment on a doll and check it). Sew up the back center seam from the bottom to the place for the opening, then baste the rest of the way up (basting over where the zipper will go). Then, press down the flaps, line up the zipper on the center seam (Sulky Spray adhesive will keep the zipper in position), and hand sew the zipper to the garment. I like to sew the portion of the zipper below the waist onto the seam allowance only. I just think it looks nicer that way. Then you turn right side out, and take out the basting stitches.

If you are using flaps and putting in **snaps or hook-n-loop**, sew up that back center seam from the bottom up to the point of the opening. Then, put the garment on a doll, right side out. Work the bottom "flap" (seam allowance) to lay flat, and the top flap - fold under and position to line up with the center seam. Then iron down that top flap to mark the position of the flap. Then sew in your snaps or hook-n-loop. I think it's always a good idea to give yourself a large seam allowance on the back of the garment. Give yourself some room for adjustments or whatever! You don't want to get to the end, and not have enough fabric to work the back closure!

View 1 & 2 Bodice Instructions:

- 1) Sew shoulder seams.
- 2) Position lace (view 1) over front center bodice, then sew side pieces to center bodice piece. Clip these curves to make for easier matching and sewing.
- 3) Hem the neckline and arm holes.
- 4) Sew side seams.

View 1 Skirt Instructions:

- 1) Position lace on skirt as desired.
- 2) Sew lace on, hemming bottom.
- 3) Position and sew down pleats.
- 4) Attach to bodice.
- 5) Sew up back center seam, bottom up, reinforcing at "stop".
- 6) Attach closure.

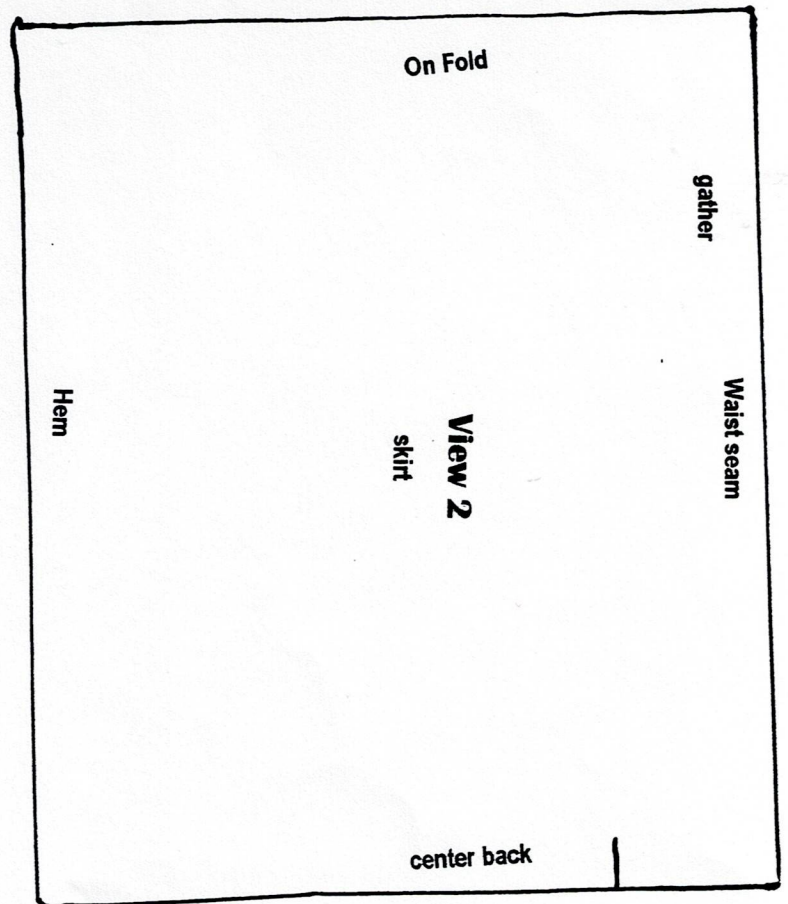
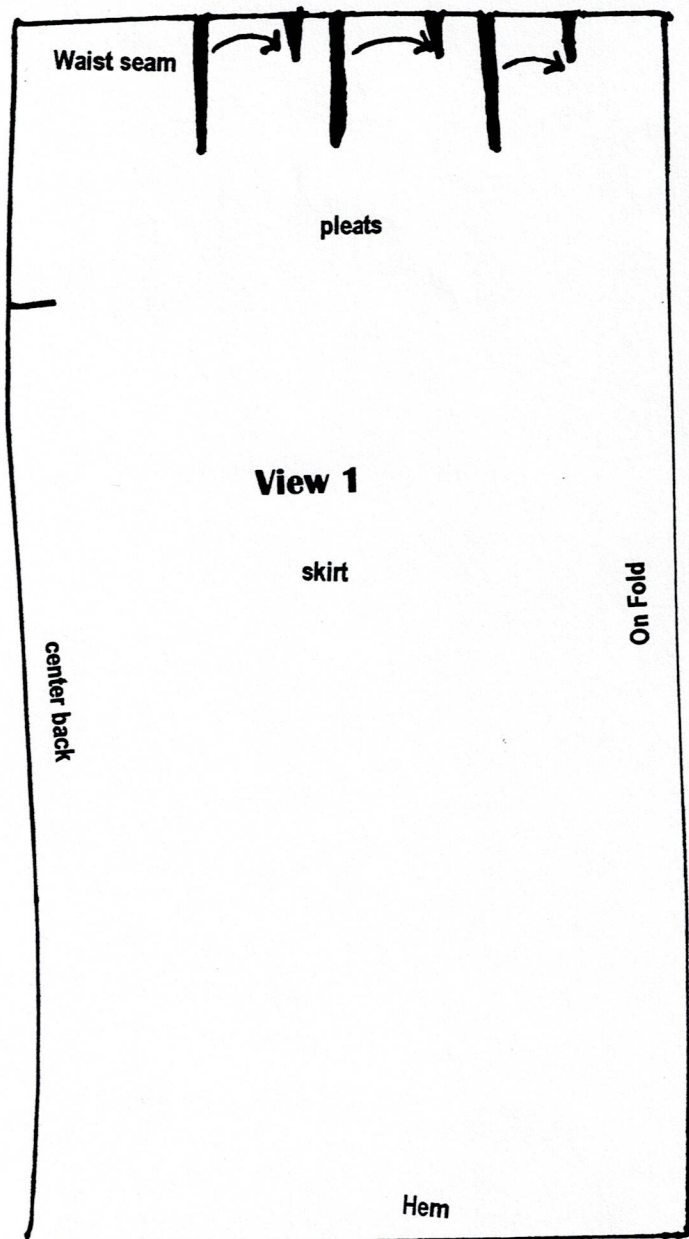
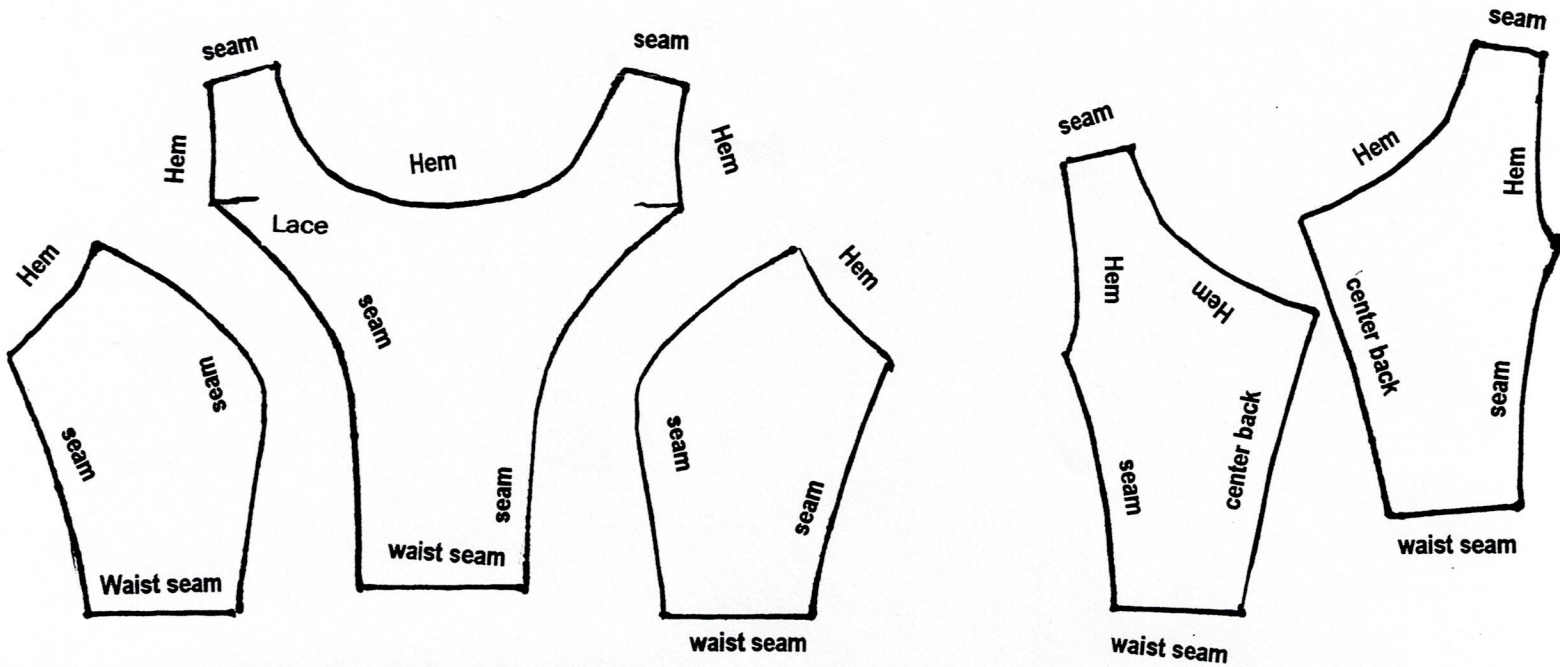
View 2 Skirt Instructions:

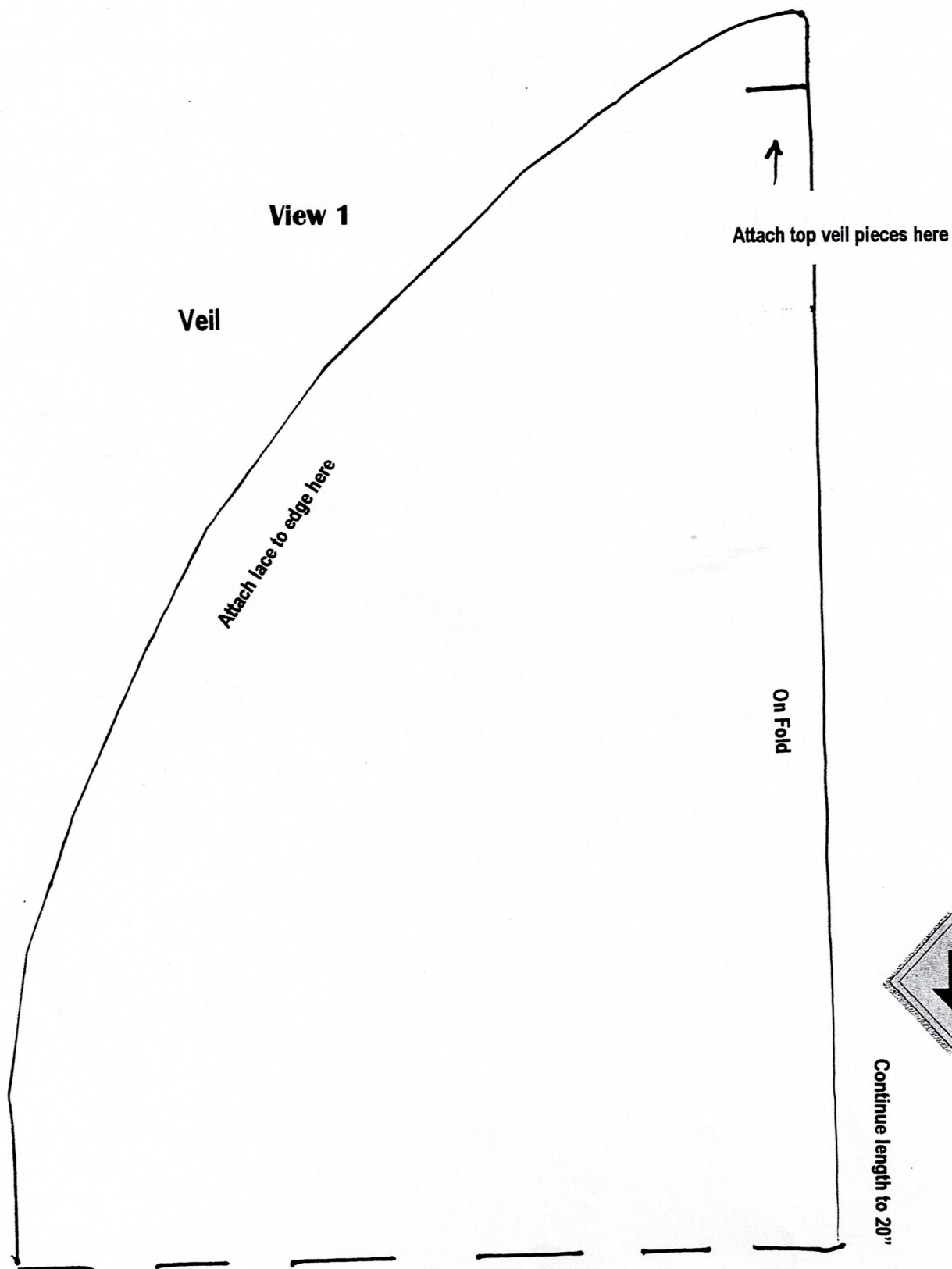
- 1) Hem bottom.
- 2) Gather waist (incorporate any lace or overlay).
- 3) Attach to bodice.
- 4) Sew up back center seam, bottom up, reinforcing at "stop".
- 5) Attach closure.

View 1 Veil Instructions:

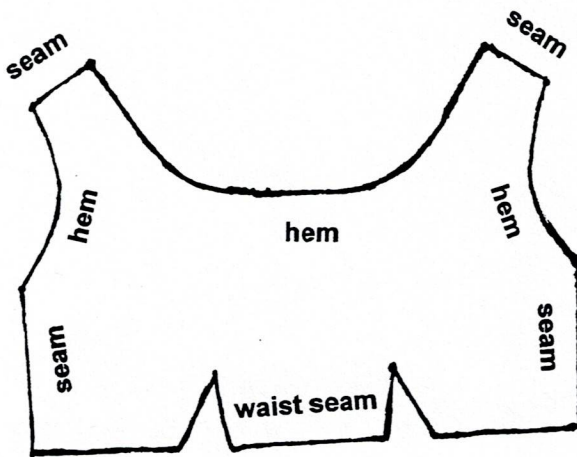
- 1) Cut out large veil piece, to desired length.
- 2) Sew on lace to edge.
- 3) Cut 4 sections, 4" to 6" in length, for top veils.
- 4) Gather top veils, and attach to long veil.
- 5) Attach ribbon bows to top veils.

Bodice to View 1 & View 2

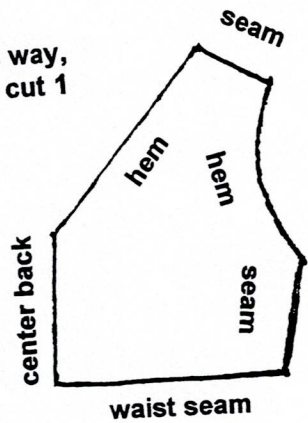




View 3



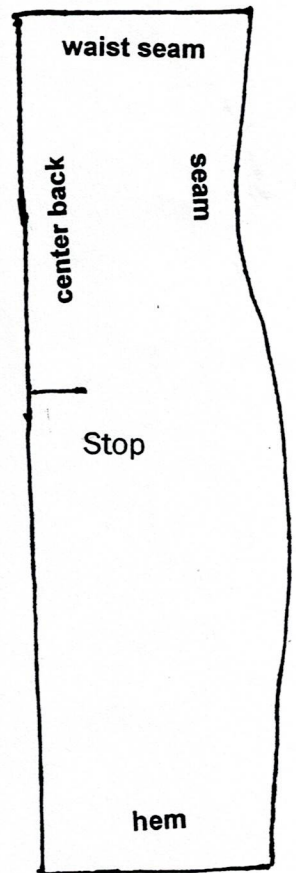
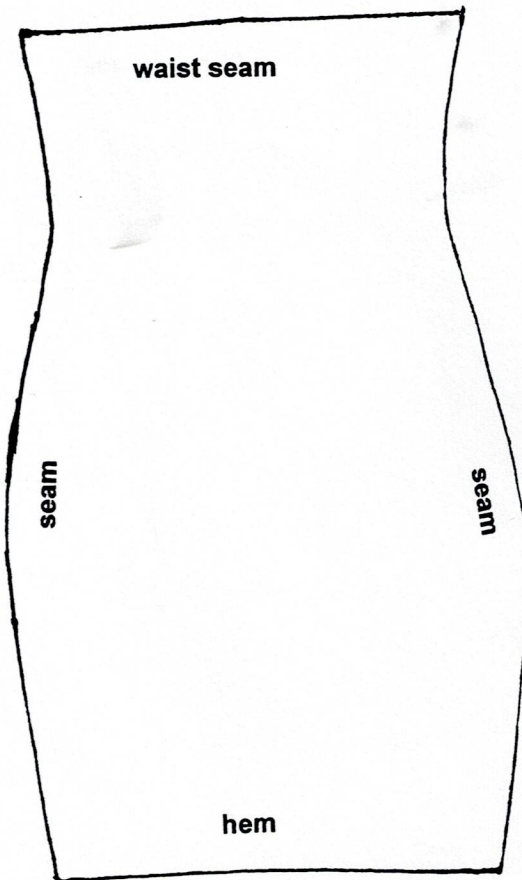
cut 1 this way,
flip over, cut 1



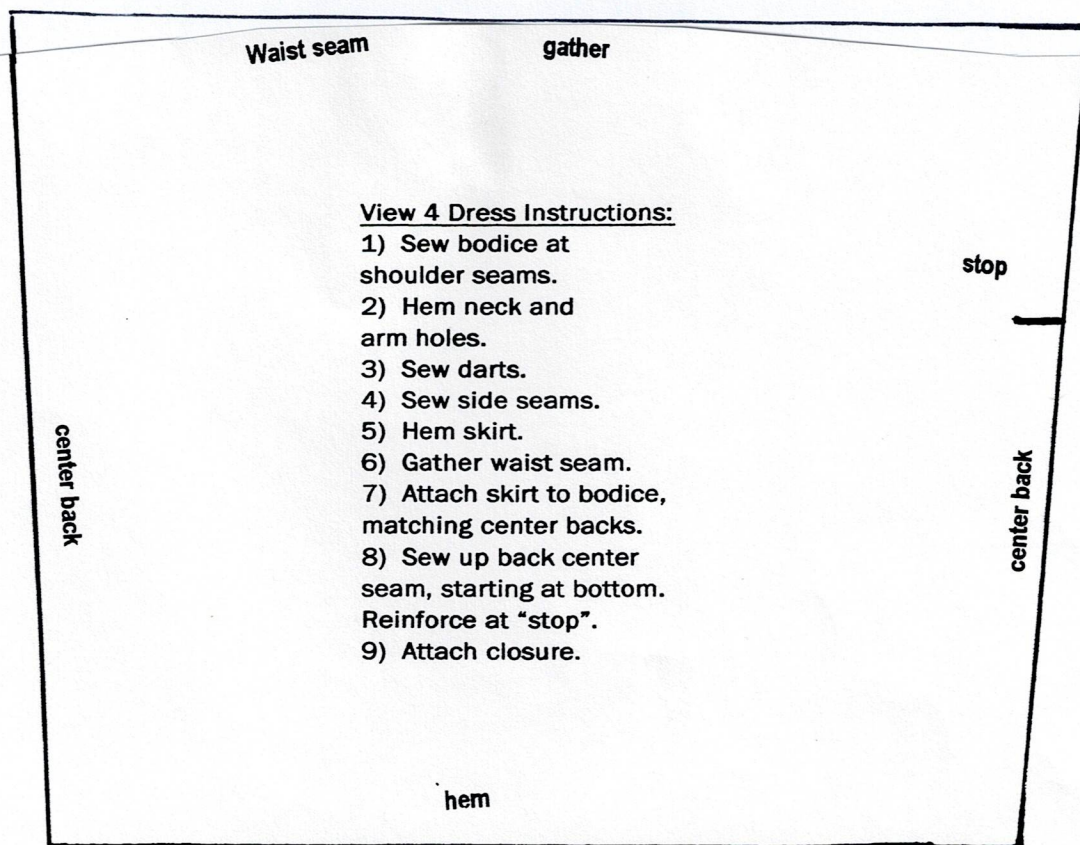
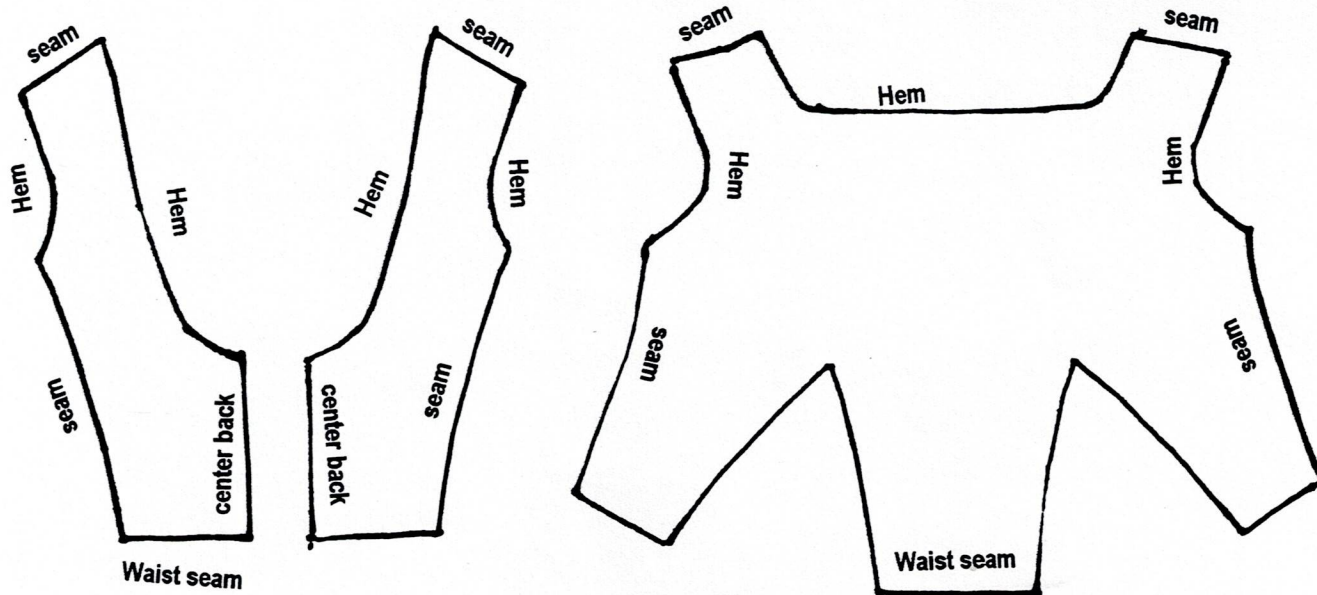
View 3 Instructions:

- 1) Sew bodice front to back pieces at shoulder seams.
- 2) Hem neck and armholes.
- 3) Sew darts in bodice.
- 4) Attach front skirt piece to front bodice at waist seam.
- 5) Attach back skirt pieces to back bodice pieces at waist seam.
- 6) Line up side seams by matching the waist seam lines. Sew up side seam.
- 7) Turn and press hem line.
- 8) Sew up back center seam to stop, and then baste above the stop.
- 9) Attach zipper.
- 10) Hem skirt.

cut 1 this way,
flip over, cut 1



View 4



View 4 Dress Instructions:

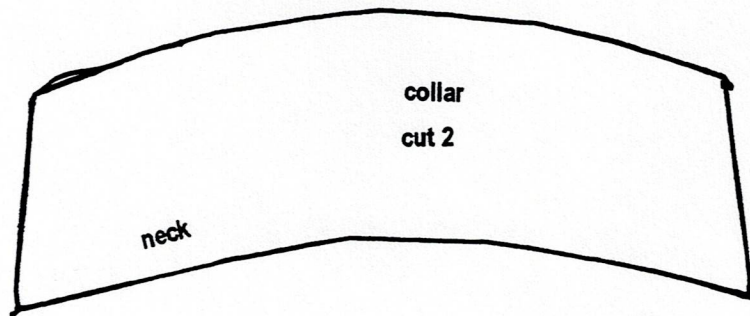
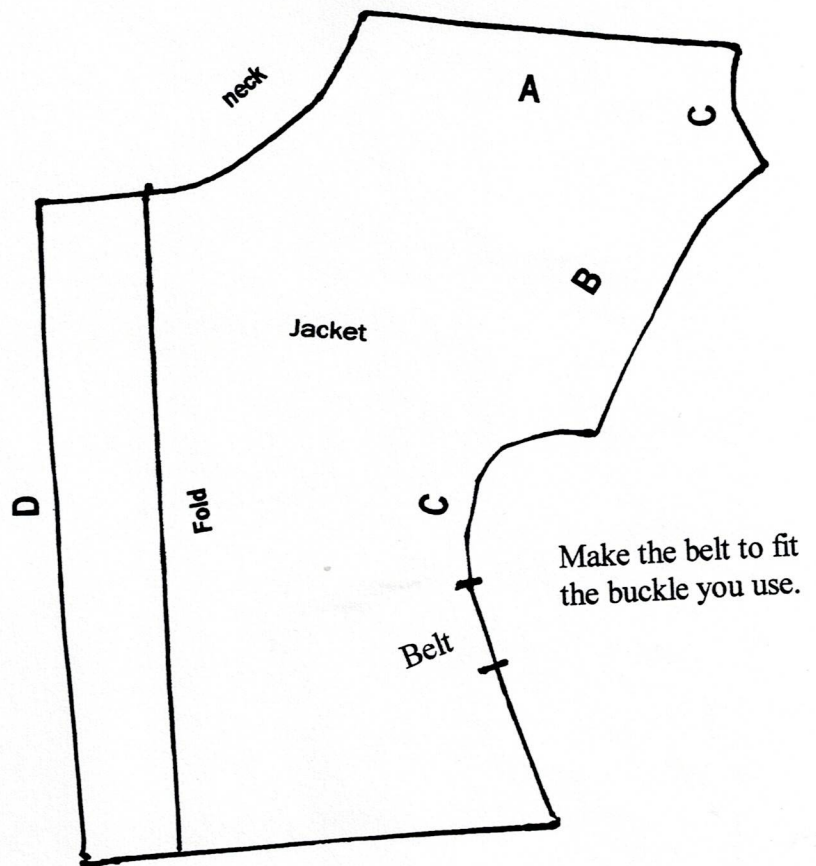
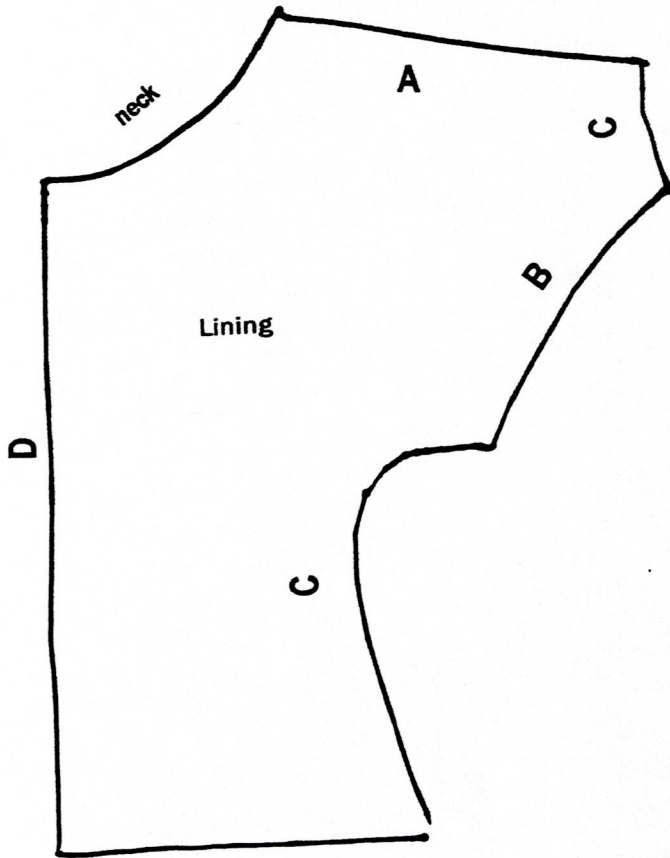
- 1) Sew bodice at shoulder seams.
- 2) Hem neck and arm holes.
- 3) Sew darts.
- 4) Sew side seams.
- 5) Hem skirt.
- 6) Gather waist seam.
- 7) Attach skirt to bodice, matching center backs.
- 8) Sew up back center seam, starting at bottom. Reinforce at "stop".
- 9) Attach closure.



Cut 1 this way then
flip over, and cut 1

View 4

Cut 1 this way then
flip over, and cut 1



View 4 continued →

View 4

View 4 Jacket instructions:

- 1) Lining - sew front seam "A" to back seam "A".
- 2) Jacket top - sew front seam "A" to back seam "A".
- 3) Collar, sew 2 pieces - right sides together, leave neck open, then turn right side out.
- 4) Sew collar to jacket top. Line up center of collar to center of back of jacket.
- 5) Sew lining to jacket at seam "D".
- 6) Fold the "fold" under and press down.
- 7) While jacket is inside out, sew lining to jacket at neck line and arm opening (marked "B").
- 8) Sew lining to jacket at bottom, but leave an opening for "turning".
- 9) Turn jacket right side out.
- 10) Folding jacket down at shoulders, (right side to right side), sew up side seams (seam "C"). Edge finish raw edge.
- 11) Stitch the lining to jacket at the bottom edge (where open from turning).



Back of jacket, cut 2, one for outside and one of lining.

