



2 0 0 1

FLEETWOOD.RV

COME OUT  
AND PLAY



## GO WHERE FREEDOM ABOUNDS



Originally built and designed by the company's founder, the Bounder® is far from typical with its spacious interior, abounding with convenient and comfortable touches of home.



Expansive galley complete with residential-style, stainless steel, double sink and lots of storage big enough for full-size dinner plates and tall cereal boxes.



Color-coordinated window treatment sets off your spectacular view of the great outdoors while enjoying a gourmet meal.



Bounder's cozy bedroom indulges you with decor brass and glass lighting, coordinated bed and window fabrics, and convenient nightstands.



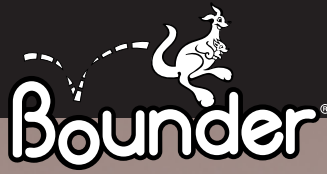
The bedroom feature cabinets add lots of storage while combining a built-in optional 13" Panasonic® TV and convenient vanity table.

**HOP INTO A BOUNDER®** and you'll soon find out why it's more than a typical motor home. For those adventurous get-togethers, the dinette system allows for easy seating adjustments with pullout storage underneath for lots of supplies. Other models include a versatile table with leaf and two folding, color-coordinating chairs.

So there won't be any excuse to leave anything behind, all

models include lots of bedroom storage. Like the new 36K bedroom that features cabinets with five roomy drawers, an integrated vanity, and shirt ward. On top, your optional 13" Panasonic® TV with remote, will supply lots of viewing pleasure as you relax in your comfortable, color-coordinated queen size bed.

With great interior features, Bounder makes sure the only way you're "roughing it" is outside, in the great wide open.



2 0 0 1

FLEETWOOD® RV

**YOU'RE BOUND TO HAVE FUN WITH  
AMERICA'S #1 SELLING MOTOR HOME.\***

Recognized as a Consumers Digest Best Buy.\*\*

The fun of escape. The experience of a new and different life. Boulder® motor home is the all-time favorite that turned the RV industry around with innovations like the first full basement and accessible seat storage. Things that made RV travel versatile and more enjoyable.

It has an owner loyalty that has sprung up Boulder clubs and rallies throughout the country. There's a multitude of imitators, but there's only one Boulder that continues to surpass itself in value and utility. Its spacious interior expresses your desire for the convenient and comfortable touches of home. There are more floor plans to choose from than any other Fleetwood Class A motor home. And to make sure you'll have plenty of hot water for everyone, a new fast-heating dual LP gas/electric 110-volt water heater is now standard.

This RV knows no bounds when it comes to working hard. Its tubular steel basement construction offers huge carrying capacity and is significantly stronger than wood. You can choose between a 3500 lb. hitch-rated Workhorse® chassis, or a 5000 lb. hitch-rated Ford® chassis to tow your toys.† Either way, life with a Boulder is even more enjoyable with your motorcycles, vehicles or personal watercraft.

The Boulder has been leaving its "tracks" since 1986. In fact, for the last ten years alone, well over 30,000 Boulders have been built. And because it's the best-selling single-brand motor home for the last decade in North America,†† Boulder has a habit of finding people who enjoy being together.



\* According to Statistical Surveys Jan. '99 - Dec. '99

\*\* Consumers Digest Best Buy 2000.

The BEST BUY SEAL is a registered trademark of Consumers Digest, Inc., used under license.

† Check your owner manual(s) for towing safety, rules and guidelines.

†† According to Statistical Surveys 1989-1999

Workhorse® is a registered trademark of Workhorse Custom Chassis • Ford® is a registered trademark of the Ford Motor Company.



## BOUNDER FEATURES FOR 2001

**Our engineering may set us apart from the rest, but the things you'll notice most when you and your family take a trip, are the top-of-the-line features. Here are but a few of the items that make life on the road with Boulder memorable.**



*Front entertainment center with 20" Panasonic® color TV and optional VCR are just some of the many Boulder features.*



*Easy access to storage under the dinette is only one reason Boulder has function written all over it. (Standard on all floor plans except 36K.)*



*An optional electronic climate control system, with dual A/C controls, enables a separate climate in the front and rear of the coach.*



*Every Boulder comes prewired for an optional Winegard® satellite dish.*



**Fill Boulder up on either side of the pump with a rear fuel-fill location, especially convenient when towing a vehicle.**

**Carpeted storage compartments are non-corrosive to prevent rusting.**

**A coach-length, aluminum drip rail prevents discoloring of the sidewall.**

**Practical, single die-cast metal paddle latches are flush-mounted for a luggage door system that's durable and easy-to-operate.**

**Anti-wicking process, on all of Boulder's openings and windows, includes multiple seals for prevention of leaks and moisture buildup.**

**Our swing-down engine access door makes it easy to check Boulder's fluid levels and electrical panel.**



*Boulder's standard 4.0kW ultra-quiet Onan® generator provides 110V service and comes with a 3-year warranty. (Optional 5.5kW generator shown.)*



*Our EZ Store™ Storage System was developed using a rack and pinion system to give you the utmost ease in accessing your stored gear below.*



*Hookups are easily accessed and color-coded for quick set-up. Adjacent is the wash station for convenient outside cleaning.*

### APPLIANCES

- Front 20" Panasonic® TV in Overhead
- Smoke Detector/Alarm
- LPG Detector/Alarm
- CO Detector/Alarm
- 6-Gallon, Quick-Recovery Water Heater with D.S.I.
- 22" 3-Burner, High-Output Cooktop with Oven
- Light/Power Range Hood
- Folding Range Cover
- Single A/C High Efficiency with Solar Panel
- Water Heater Bypass
- Marine Toilet with Water Saver
- Toilet Tank San-T-Flush™ System
- 1-cu. ft. Sharp® Microwave
- 8-cu. ft. Dometic® Double-Door Refrigerator
- Single-Lever Galley Faucet
- Water Filter with Faucet
- Demand Water Pump with Filter
- Power Bath Vent
- Fan-Tastic® Power Roof Vent in Galley
- Fire Extinguisher
- Telephone Jack in Dash and Bedroom
- Rear Speakers In Bedroom
- Monitor Panel

### BODY STRUCTURE

- Vacubond Lower/Upper Floor
- Vacubond Walls with Smooth Exterior Fiberglass
- Radiused Roof with Ducted A/C-Flat Interior Ceiling
- Rubber Roof
- Steel Floor/Wall/Ceiling Framing
- Power Platform II

### ELECTRICAL

- Patio Receptacle
- 120V/12V AC/DC Converter Central Electrical Panel
- 120V/12V Wire Raceways
- 3-Way Water Pump Switching
- 4.0kW Onan® Generator
- 30-amp Service
- Wall Switches
- Dual 6V/Deep-Cycle 218-amp House Batteries
- VCR Ready

### EXTERIOR

- Full Fiberglass Front Cap

### EXTERIOR (CONT.)

- Swing-Down Engine Access Door
- Roto Cast, Front Quarter Panels
- Roto Cast, Rear Wheel Well Trim
- Aerodynamic Bus Styling
- Entry Door with Deadbolt Latch
- Slider Windows in Living Area
- Torque Windows in Bedroom
- Aluminum/Painted Front Grille
- Bounder Logo Badging
- Utility Compartment with Exterior Shower
- Roof Ladder
- Exterior Assist Handle
- Remote-Controlled Rear View Mirrors
- 20' Sewer Hose
- Park Cable Receptacle
- Awning Rail/Drip Molding (Both Sides)
- Power Entry Step
- Dual Battery Charge Control
- Under-Floor Spare Tire (Except 31W)
- Porch Light
- 3 Colorway Graphics to Match Decor

### EXTERIOR AUTOMOTIVE

- Large, Curved Aerodynamic Windshield
- Undercoating
- Stainless Steel Wheel Simulators
- Underhood Utility Light
- Steel Surface on Bulkhead
- Trailer Hitch with 7-Point Electrical Hook-Up
- Large Single Headlamps with Turn Signal
- Rear Camera Ready
- Windshield Wipers with Wet Arm

### EXTERIOR STORAGE

- Insulated Luggage Doors
- Single Paddle/Metal Latches
- Continuous One-Piece Bulb Seal
- Hidden, Stainless Steel Latch Rods
- Lighted Compartments
- Steel Seal Frames
- Carpeted Luggage Compartments/Fiberglass in EZ Store™
- Pass-Through Storage

### INTERIOR

- 3 Interior Decors
- Skylight In Tub/Shower
- Wall-to-Wall Nylon Carpet with Carpet Pad
- Vinyl Floor Covering (Galley & Bathroom)

### INTERIOR (CONT.)

- Wood Drawers
- Roller Guide Drawer Slides with Transit Ship Locks
- Radius Corner Cabinetry
- Brass Finished Cabinet Hardware
- Day/Night Shades (Living Area)
- Bedspread with Decor Pillows
- Restonic® Innerspring Mattress
- Oak Cabinet Doors & Drawers
- Window Coverings
- Oak Bath Door Trims
- Trash Basket in Galley
- Molded Tub/Shower with One-Piece Enclosure
- Residential Seat Styling
- Entry Rail (Oak & Brass)
- Raised Panel, Overhead Cabinet Doors
- Oak Flat Panel, Base Cabinet Doors
- Adjustable Cabinet Shelves (Selected Cabinets)
- Sink Cutting Board
- Solid Divider Doors
- Large, Double Stainless Steel Sink
- Oak Wood Grain

### INTERIOR AUTOMOTIVE

- Intermittent Wiper Control
- Double Swivel Sun Visors with Map Pockets
- Engine Cover Convenience Tray
- Cruise Control
- Low Profile Engine Cover
- Radio with Cassette AM/FM/MX Electronic Tuning
- Battery Disconnect System
- Auto A/C Heater Combo
- Radio Switch—Main/Auxiliary
- Soft-Surface Automotive Dash
- Tilt Steering Wheel
- Tilt-Up Instrument Panel
- Driver/Passenger Captain's Chairs with Reclining Back/Slide Controls
- 3-Point Seat Belts on Driver/Passenger Seats

### INTERIOR LIGHTING

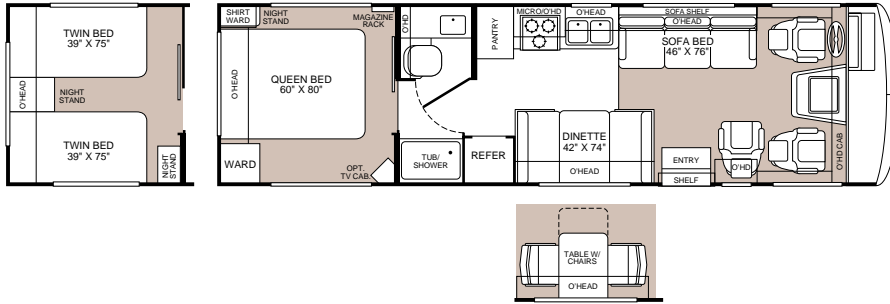
- Wardrobe Lighting
- Fluorescent Ceiling Lighting with Dual Bulb
- Decor Lighting
- Incandescent Lighting



# BOUNDER FLOOR PLANS FOR 2001

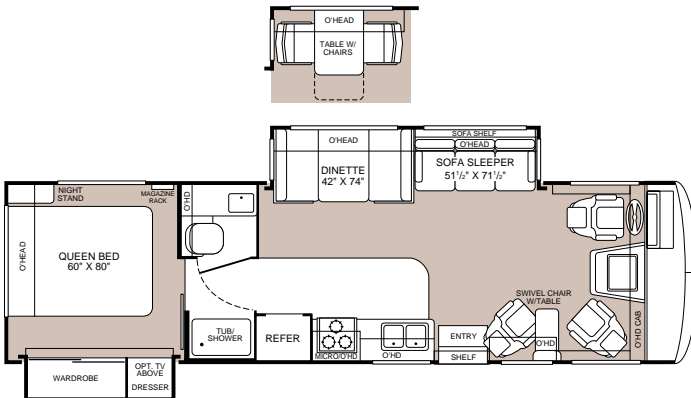
## MODEL 31M

- Island Queen Bed or Optional Twin Beds
- Swivel Chair
- Tub/Shower
- Sofa Bed
- Dinette or Optional Table with Chairs



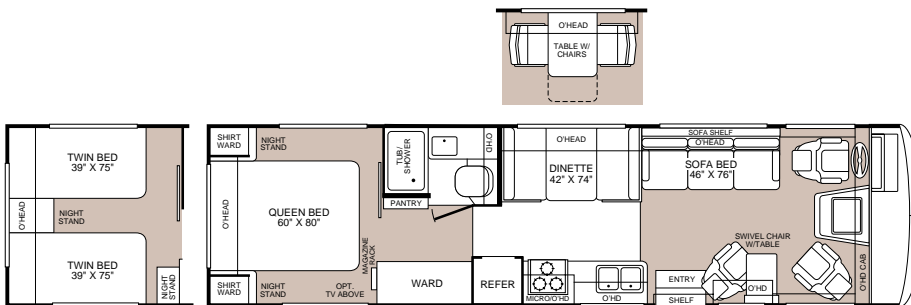
## MODEL 31W

- Island Queen Bed
- Spacious Wardrobe Slide-Out with Dresser
- Dinette or Optional Table with Chairs
- Tub/Shower
- Living Room Slide-Out with Sofa Sleeper
- Swivel Chair with Table



## MODEL 32H

- Island Queen Bed or Optional Twin Beds
- Dual Shirt Wards and Nightstands
- Fully Enclosed Bathroom with Tub/Shower
- Large Wardrobe
- Sofa Bed
- Dinette or Optional Table with Chairs
- Swivel Chair with Table



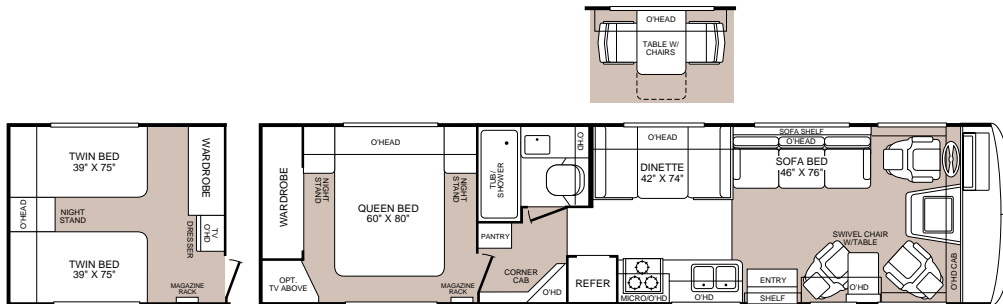
**MODEL**  
**34D**

- Choice of 3 Bedroom Configurations
- Fully Enclosed Bathroom with Large Tub/Shower
- Dinette or Optional Table with Chairs
- Optional Side-By-Side Refrigerator
- Living Room Slide-Out with Sofa Sleeper
- Swivel Chair with Table



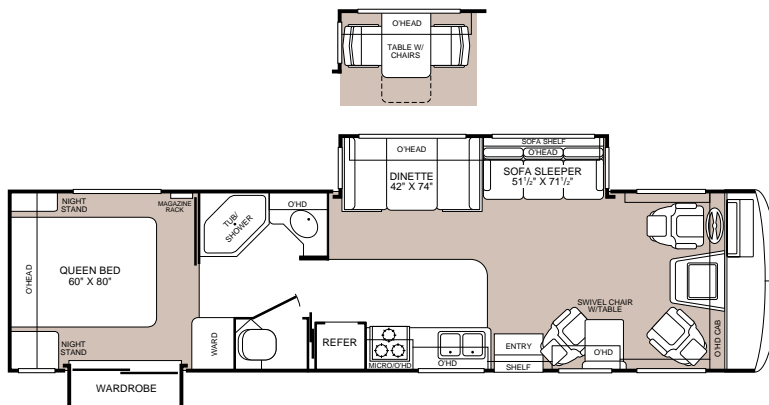
**MODEL**  
**34J**

- Island Queen Bed or Optional Twin Beds
- Dinette or Optional Table with Chairs
- Fully Enclosed Bathroom with Large Tub/Shower
- Sofa Bed
- Swivel Chair with Table



**MODEL**  
**34T**

- Island Queen Bed
- Wardrobe Slide-Out
- Dinette or Optional Table with Chairs
- Private Toilet
- Living Room Slide-Out with Sofa Sleeper
- Swivel Chair with Table

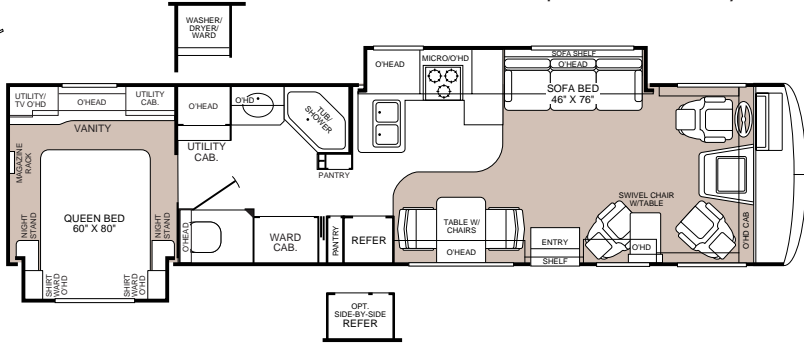


**MODEL**

**36K**

- Bedroom Slide-Out
- Bedroom Feature Cabinets with Integrated Vanity
- Table with Chairs
- Optional Side-By-Side Refrigerator
- Optional Washer/Dryer Ward
- Galley/Living Room Slide-Out with Sofa Bed
- Swivel Chair with Table

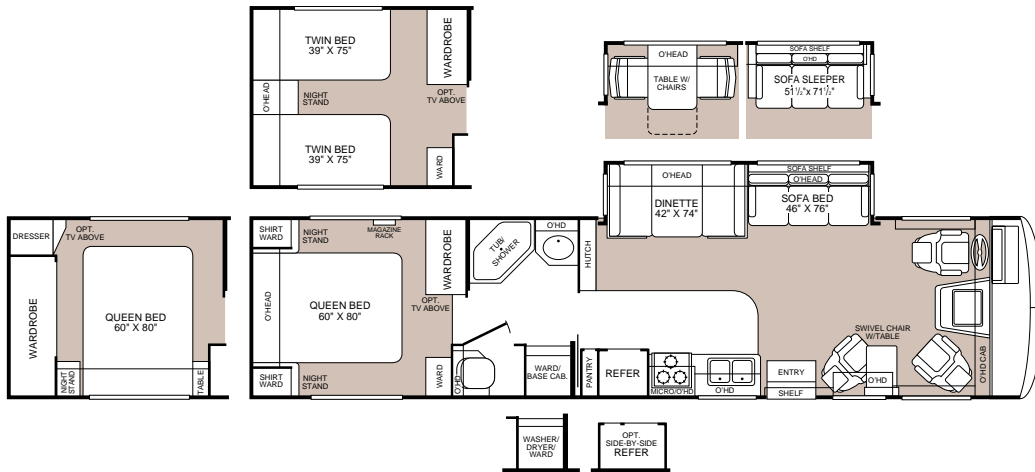
NEW FOR  
2001



**MODEL**

**36S**

- Choice of 3 Bedroom Configurations
- Optional Washer/Dryer
- Dinette or Optional Table with Chairs
- Optional Side-By-Side Refrigerator
- Living Room Slide-Out with Sofa Bed
- Optional Sofa Sleeper
- Swivel Chair with Table



**REALIZE A NEW SENSE OF ADVENTURE BY JOINING A BOUNDER CLUB.**

Traveling to new destinations and making new friends are some of the adventures awaiting you in a Bounder RV. Especially when you join a Bounder Club where you'll meet others with a similar passion for the RV lifestyle. Contact any of these organizations for membership information.

**Bounders United**  
530-647-0809  
P.O. Box 3580  
Diamond Springs, CA 95619-9998  
lelandja@directcon.net

**Bounders of America**  
863-984-8272  
P. O. Box 866  
Polk City, FL 33868  
james31@mindspring.com







## 2001 OPTIONS

NEW FOR  
2001

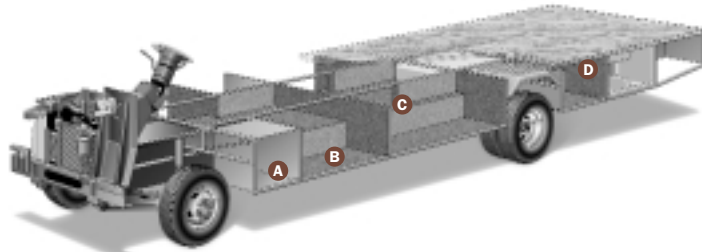
APPLIANCES	31M	31W	32H	34D	34J	34T	36K	36S
Furnace 20M BTU/34M BTU Dual	N/A	N/A	N/A	N/A	N/A	N/A	STD	STD
Furnace 34M BTU	STD	STD	STD	STD	STD	STD	N/A	N/A
Dual Roof A/C High Efficiency BTU with Solar Panel	OPT	OPT	OPT	OPT	OPT	OPT	OPT	OPT
Sharp® Convection Microwave	OPT	OPT	OPT	OPT	OPT	OPT	OPT	OPT
Panasonic® VCR/VHS	OPT	OPT	OPT	OPT	OPT	OPT	OPT	OPT
Washer/Dryer	N/A	N/A	N/A	N/A	N/A	N/A	OPT	OPT
12 cu. ft. Side-By-Side Dometic® Refrigerator with Ice Maker	N/A	N/A	N/A	OPT	N/A	N/A	OPT	OPT
Sharp® CSA Convection Microwave	OPT	OPT	OPT	OPT	OPT	OPT	OPT	OPT
DSS Manual Lift/Winegard® Satellite Dish	OPT	OPT	OPT	OPT	OPT	OPT	OPT	OPT
Rear 13" Panasonic® TV with Remote	OPT	OPT	OPT	OPT	OPT	OPT	OPT	OPT
ELECTRICAL	31M	31W	32H	34D	34J	34T	36K	36S
5.5kW Onan® Generator	OPT	OPT	OPT	OPT	OPT	OPT	OPT	OPT
7.0kW Onan® Generator	OPT	OPT	OPT	OPT	OPT	OPT	OPT	OPT
ECC Climate Control	OPT	OPT	OPT	OPT	OPT	OPT	OPT	OPT
ECC w/13.5/11M A/C w/5.5kW Generator Upgrade	OPT	OPT	OPT	OPT	OPT	OPT	OPT	OPT
ECC w/13.5/11M A/C w/7.0kW Generator Upgrade	OPT	OPT	OPT	OPT	OPT	OPT	OPT	OPT
5.5kW Generator—Onan® Dual A/C Ready Upgrade	OPT	OPT	OPT	OPT	OPT	OPT	OPT	OPT
7.0kW Generator—Onan® Dual A/C Ready Upgrade	OPT	OPT	OPT	OPT	OPT	OPT	OPT	OPT
CSA 5.5kW Gen—Onan®/DL A/C Ready Upgrade	OPT	OPT	OPT	OPT	OPT	OPT	OPT	OPT
CSA 7.0kW Gen—Onan®/DL A/C Ready Upgrade	OPT	OPT	OPT	OPT	OPT	OPT	OPT	OPT
CSA ECC w/Dual A/C 5.5kW Generator Upgrade	OPT	OPT	OPT	OPT	OPT	OPT	OPT	OPT
CSA ECC w/Dual A/C 7.0kW Generator Upgrade	OPT	OPT	OPT	OPT	OPT	OPT	OPT	OPT
CSA Package—Workhorse®	OPT	N/A	OPT	N/A	N/A	N/A	N/A	N/A
CSA Package—Ford®	OPT	OPT	OPT	OPT	OPT	OPT	OPT	OPT
EXTERIOR	31M	31W	32H	34D	34J	34T	36K	36S
Awning—USA	OPT	OPT	OPT	OPT	OPT	OPT	OPT	OPT
4-Point Manual Hydraulic Leveler—Workhorse®	OPT	N/A	OPT	N/A	N/A	N/A	N/A	N/A
4-Point Manual Hydraulic Leveler—Ford®	OPT	STD	OPT	STD	OPT	STD	STD	STD
EXTERIOR AUTOMOTIVE	31M	31W	32H	34D	34J	34T	36K	36S
Workhorse® Chassis 7.4L Vortec Engine	OPT	N/A	OPT	N/A	N/A	N/A	N/A	N/A
Ford® Chassis 6.8L Engine	OPT	OPT	OPT	OPT	OPT	OPT	OPT	OPT
Rear Vision Camera	OPT	OPT	OPT	OPT	OPT	OPT	OPT	OPT
INTERIOR	31M	31W	32H	34D	34J	34T	36K	36S
Glass Shower Door with Bright Brass Frame	N/A	N/A	N/A	N/A	N/A	STD	STD	STD
Headboard	N/A	N/A	N/A	STD	N/A	STD	N/A	STD
CSA Sofa Lock	STD	STD	STD	STD	STD	STD	STD	STD
Lounge Recliner	N/A	OPT	OPT	OPT	OPT	OPT	OPT	OPT
Coffee Table	N/A	N/A	N/A	OPT	N/A	OPT	N/A	OPT
Dinette Table and Chairs with Free-Standing Extension	OPT	OPT	OPT	OPT	OPT	OPT	STD	OPT
Shower Curtain	N/A	N/A	STD	STD	STD	N/A	N/A	N/A
INTERIOR AUTOMOTIVE	31M	31W	32H	34D	34J	34T	36K	36S
Dash Fans	OPT	OPT	OPT	OPT	OPT	OPT	OPT	OPT
CB Radio Ready	OPT	OPT	OPT	OPT	OPT	OPT	OPT	OPT
Stereo AM/FM CD Player	OPT	OPT	OPT	OPT	OPT	OPT	OPT	OPT
AM/FM Cassette with Stack CD Player	OPT	OPT	OPT	OPT	OPT	OPT	OPT	OPT
SLIDE-OUT	31M	31W	32H	34D	34J	34T	36K	36S
Living Room—Dinette Table & Chairs/Sofa	N/A	N/A	N/A	OPT	N/A	OPT	N/A	OPT
Living Room—Dinette/Sofa	N/A	STD	N/A	STD	N/A	STD	N/A	STD
Bedroom Wardrobe—Closet/Organizer	N/A	STD	N/A	N/A	N/A	STD	N/A	N/A
Galley/Sofa	N/A	N/A	N/A	N/A	N/A	N/A	STD	N/A
Bedroom	N/A	N/A	N/A	N/A	N/A	N/A	STD	N/A

**IMPORTANT—PLEASE READ:** Product information and photography included in this brochure were as accurate as possible at the time of publication. For the most current product information and changes, please visit our website at [www.fleetwood.com](http://www.fleetwood.com) or contact your local Fleetwood dealer. Subsequent refinements may be evident in the actual product. Prices and specifications are subject to change without notice. All weights, fuel, liquid capacities and dimensions are approximate. Fleetwood has designed its recreational vehicles to provide a variety of uses for its customers. Each vehicle features optimal seating, sleeping, storage and fluid capacities. The user is responsible for selecting the proper combination of loads to ensure that the recreational vehicle's capacities are not exceeded.



## 2001 SPECIFICATIONS

**Boulder's Power Platform II is a unique truss design welded together using tubular steel that's durable, strong and dependable. The result is a quiet and nearly flawless ride, increased floor strength and substantially more storage space below. An all-steel foundation further reduces stress loads on the sidewalls and minimizes chassis flex on uneven roads.**



**A** Easy access compartments let you get to Boulder's batteries and dual-battery charge control.

**B** All exterior compartments are reinforced with substantial steel outriggers for increased durability and years of cargo carrying.

**C** Full basement construction maximizes space beneath the floor, encloses the heated water and holding tank compartments, and provides easy-to-reach, pass-through storage.

**D** The floor is a vacuum-bonded composite of steel tubing, foam insulation, and marine-grade plywood cut to our exact specs for lightweight strength and resistance to moisture.

*Drawing for illustrative purpose only to highlight aspects of motor home construction. Actual motor home design depends on model and is subject to change.*



FORD® CHASSIS	31M	31W	32H	34D	34J	34T	36K	36S
Engine LD	6.8L	6.8L	6.8L	6.8L	6.8L	6.8L	6.8L	6.8L
Wheelbase	190"	208"	208"	208"	208"	208"	228"	228"
GVWR lbs/kgs (1)	18,000/8,163	20,500/9,299	20,500/9,299	20,500/9,299	20,500/9,299	20,500/9,299	20,500/9,299	20,500/9,299
Front GAWR lbs/kgs (2)	7,000/3,175	7,000/3,175	7,000/3,175	7,000/3,175	7,000/3,175	7,000/3,175	7,000/3,175	7,000/3,175
Rear GAWR lbs/kgs (2)	11,000/4,989	13,500/6,123	13,500/6,123	13,500/6,123	13,500/6,123	13,500/6,123	13,500/6,123	13,500/6,123
Base Weight lbs/kgs (3)	13,900/6,304	15,540/7,048	14,360/6,514	15,651/7,099	14,900/6,753	16,150/7,328	16,800/7,620	16,160/7,329
GCWR lbs/kgs (4)	23,000/10,431	25,500/11,565	25,500/11,565	25,500/11,565	25,500/11,565	25,500/11,565	25,500/11,565	25,500/11,565
Hitch Rating/Tongue Weight lbs	5,000/500	5,000/500	5,000/500	5,000/500	5,000/500	5,000/500	5,000/500	5,000/500
Hitch Rating/Tongue Weight kgs	2,268/227	2,268/227	2,268/227	2,268/227	2,268/227	2,268/227	2,268/227	2,268/227
Fuel Capacity gal/lbs (6.1lbs/gal)	75/450	75/450	75/450	75/450	75/450	75/450	75/450	75/450
WORKHORSE® CHASSIS	31M	31W	32H	34D	34J	34T	36K	36S
Engine LD	7.4L	N/A	7.4L	N/A	N/A	N/A	N/A	N/A
Wheelbase	190"	N/A	208"	N/A	N/A	N/A	N/A	N/A
GVWR lbs/kgs (1)	17,000/7,710	N/A	18,000/8,163	N/A	N/A	N/A	N/A	N/A
Front GAWR lbs/kgs (2)	6,000/2,721	N/A	6,000/2,721	N/A	N/A	N/A	N/A	N/A
Rear GAWR lbs/kgs (2)	11,000/4,987	N/A	12,000/5,443	N/A	N/A	N/A	N/A	N/A
Base Weight lbs/kgs (3)	13,200/5,986	N/A	13,800/6,259	N/A	N/A	N/A	N/A	N/A
GCWR lbs/kgs (4)	20,500/9,297	N/A	21,000/9,524	N/A	N/A	N/A	N/A	N/A
Hitch Rating/Tongue Weight lbs	3,500/350	N/A	3,500/350	N/A	N/A	N/A	N/A	N/A
Hitch Rating/Tongue Weight kgs	1,588/159	N/A	1,588/159	N/A	N/A	N/A	N/A	N/A
Fuel Capacity gal/lbs (6.1lbs/gal)	75/450	N/A	75/450	N/A	N/A	N/A	N/A	N/A
DIMENSIONS	31M	31W	32H	34D	34J	34T	36K	36S
Length (5)	31' 4"	31' 10"	32' 10"	34' 10"	34' 10"	34' 10"	36' 10"	36' 10"
Height (with A/C)	11' 8"	11' 8"	11' 8"	11' 8"	11' 8"	11' 8"	11' 8"	11' 8"
Width (maximum) (6)	102"	102"	102"	102"	102"	102"	102"	102"
Interior Height (maximum)	79"	79"	79"	79"	79"	79"	79"	79"
Interior Width (maximum)	96"	96"	96"	96"	96"	96"	96"	96"
LIQUID CAPACITIES (GALLONS/LITERS)	31M	31W	32H	34D	34J	34T	36K	36S
Fresh Water Holding Tank (8.3lbs/gal)	80/302	80/302	80/302	80/302	80/302	80/302	80/302	80/302
Grey Water Holding Tank (8.3lbs/gal)	50/189	50/189	50/189	50/189	50/189	50/189	50/189	50/189
Black Water Holding Tank (8.3lbs/gal)	50/189	50/189	50/189	50/189	50/189	50/189	50/189	50/189
Appliance LPG Tank (4.5lbs/gal) (WC) (7)	25/95	25/95	25/95	25/95	25/95	25/95	25/95	25/95
Water Heater Tank (8.3lbs/gal)	6/23	6/23	6/23	6/23	6/23	6/23	6/23	6/23

### METRIC CONVERSIONS:

Feet to meters: ft x .304 = meters

Lbs to kgs: lbs x .454 = kgs

Gallons to liters: gal x 3.78 = ltrs

- GVWR (Gross Vehicle Weight Rating): Means the maximum permissible loaded weight of the motor home. The GVWR is equal to or greater than the sum of the unloaded vehicle weight plus the net carrying capacity.
- GAWR (Gross Axle Weight Rating): Means the maximum permissible loaded weight a specific axle is designed to carry.
- BW (Base Weight): Means the weight of the motor home without fuel, options, water, cargo or passengers.

- GCWR (Gross Combined Weight Rating): Means the value specified by the motor home manufacturer as the maximum allowable loaded weight of this motor home with its towed vehicle. Towing and braking capacities may differ. Refer to Fleetwood and chassis manufacturer manuals for complete information.

5. Length taken from front bumper to rear bumper.

6. Excludes safety equipment and awnings.

7. Tank Manufacturer's listed water capacity (WC). Actual LPG capacity is 80% of water listing as required by the safety code.

N/A: Information not available at the time of publication.

**WHAT HAPPENS WHEN YOU SET THE STANDARDS  
OF RV QUALITY FOR OVER 50 YEARS?**

**YOU SET THEM EVEN HIGHER...**

Our customers expect us to. As a matter of fact, first-time RV buyers, who bought other manufacturers' RVs, tell us they wish they'd spent a little bit more for better quality. That's why experienced buyers are more likely to buy a Fleetwood RV.\* That's also why Fleetwood RV invests in people, systems, and manufacturing quality that are second to none. This *may* make us a bit more expensive than some brands, but satisfied Fleetwood RV owners know we're worth it.

**PEOPLE...**

We hire engineers, designers and drafters from leading automotive design schools. Our front-line associates are well-trained, quality-minded men and women who take pride in their work. No other manufacturer has a larger, more professional team behind their products.

**SYSTEMS...**

Our product development team uses state-of-the-art, computer-assisted-design (CAD) technology to build in fit and finish right from the drawing board. Each product is meticulously documented with over 3,500 pages of engineering drawings. A computerized bill of materials details over 20,000 pieces that go into

TuffPEX™ is a trademark of Uponor.

*Aided by the IronCAD™ system, hundreds of analysis and refinement hours are spent before prototypes are built.*



your motor home. And, a vehicle specific *Electronic Parts Catalog* shows 600–800 common parts... so, if you need a new part, your authorized Fleetwood RV service dealership knows exactly what you need. Some manufacturers may not invest the extra time and money to accurately document their products, which could cost you plenty in headaches and hassles down the road.

**MANUFACTURING...**

We only do what we know we're best at—building a quality-finished motor home. When it comes to the appliances, doors, windows and furniture, we partner with other recognized leaders to do what they know best... top names like Sharp®, Panasonic®, Dometic®, Restonic® and Flexsteel®. Some manufacturers will tell you partnering like this makes us final assemblers. We call it working smarter to bring you more value.

**QUALITY...**

The quality outside reflects the quality inside—places where you can't see it, but where it really counts. For example, we use vacubonded sidewall construction that's required for the special needs of a motor home. Windshields bonded to metal on most models. Our new TuffPEX™

*Time is devoted to refining the style and aerodynamics of every Fleetwood motor home.*



*For strength, noise reduction and insulation, composite sidewalls and floors are made of steel, plywood and polystyrene foam.*



plumbing system is able to withstand temperatures as low as -40° F. And now offered on our mid- to high-end Class A motor homes, a new, revolutionary exterior sidewall material which contains no wood products to guard against swelling, rotting and delamination. Before any unit rolls off the line at each of our plants, it goes through a documented checklist containing hundreds of items specific to that product. It won't leave the plant until it has met our high standards. And, the list goes on.

From the drawing board to the assembly line, we will continue to develop and manufacture quality products for our customers.

Fleetwood RV... setting standards beyond your expectations.

\*Angus Reid RV Market Segmentation Study, 1998

*We build our cabinets and secure them to the floor before the walls go up to add strength and help eliminate noises.*





# FLEETWOOD'S FAR-REACHING WARRANTY AND SERVICE PROGRAM



## LIMITED ONE-YEAR/ THREE-YEAR WARRANTY

Leaving the Fleetwood dealership after you've purchased your RV doesn't mean leaving each dealer's commitment to your satisfaction behind.

OWNERCARE, Fleetwood's extensive warranty and service program, provides one/three year(s) of dedicated customer satisfaction. OWNERCARE stands out as one of the RV industry's most comprehensive programs and includes systems and applications, construction, no deductible and no service charge. See your nearest Fleetwood dealer for a full explanation of benefits and restrictions.

## FULLY TRANSFERABLE

At Fleetwood RV, we're confident in our products and don't hesitate to stand behind them. Your newly purchased Fleetwood RV comes with one of the industry's most comprehensive warranties, fully transferable for the first 12 months.

## NATIONAL COVERAGE

Have a question about your new Fleetwood RV? We've got it covered. The nation's largest trained dealer network—ready, willing and able to provide you with the services you need to make every moment of owning your RV enjoyable. Over 1,100 Fleetwood dealers throughout the U.S. and Canada are available to you. With national coverage, peace of mind and complete satisfaction are just a phone call away.



## AN EXTRA THANK YOU

Ask your dealer about your Thousand Trails complimentary 30-day membership certificate. It's your chance to get going in your new RV and enjoy some scenic camping, plus our way of thanking you again for your purchase of a Fleetwood RV. For more information on your complimentary membership certificate, please call 1-800-205-0606.

Happy (Thousand) Trails!



## FLEETWOOD RV AND MOTOR SPORTS: A WINNING TEAM



Three wide in the first turn. 200 miles per hour on the back straight. Passing for the lead through the short chute. Nothing beats the excitement of NASCAR racing. Every year thousands of NASCAR fans and Fleetwood RV owners travel to races to support their favorite drivers, enjoy time with family and rekindle friendships.

RVs have become as much a part of motorsports as pit row and the checkered flag. That's why Fleetwood RV is a proud sponsor of 1999 Winston Cup Champion Dale Jarrett and the Robert Yates Racing Team.

As the number one RV manufacturer\* in the country, our winning ways continue. Fleetwood RV is now the "Official Recreational Vehicle" at nine

\*According to Statistical Surveys Jan. '99-Dec. '99

International Speedway Corporation racetracks.\*\* And for Fleetwood owners, emergency service crews are available at select tracks to ensure a trouble-free weekend. While you're enjoying the race, be sure to look for the Fleetwood RV Prize Patrol and go home with some exciting giveaways.

So this weekend, pack up your friends and family and experience the thrill of cheering on Dale firsthand, in first-class style, with Fleetwood RV.

\*\* Daytona International Speedway, Darlington Raceway, Talladega Superspeedway, California Speedway, Richmond International Speedway, Michigan Speedway, Watkins Glen International Speedway, Phoenix International Raceway, Homestead-Miami Speedway.



[www.fleetwood.com](http://www.fleetwood.com)

Visit our website to find a dealer near you, learn more about other Fleetwood products or purchase Fleetwood branded apparel. Or call 1-800-444-4905.

FOR CUSTOMER ASSISTANCE, call toll free 24 hours a day at 1-800-322-8216, visit our website, or you may write to Fleetwood Enterprises, Inc., P.O. Box 7638, Riverside, CA 92513-7638.

**IMPORTANT-PLEASE READ:** Product information and photography included in this brochure were as accurate as possible at the time of publication. For the most current product information and changes, please visit our website at [www.fleetwood.com](http://www.fleetwood.com) or contact your local Fleetwood dealer. Subsequent refinements may be evident in the actual product. Prices and specifications are subject to change without notice. All weights, fuel, liquid capacities and dimensions are approximate. Fleetwood has designed its recreational vehicles to provide a variety of uses for its customers. Each vehicle features optimal seating, sleeping, storage and fluid capacities. The user is responsible for selecting the proper combination of loads to ensure that the recreational vehicle's capacities are not exceeded.

**FLEETWOOD RV**

*America's Favorite Recreational Vehicles*

Fleetwood Enterprises, Inc., RV Marketing, P.O. Box 7638, Riverside, CA 92513-7638

Your local Fleetwood RV dealer is:



This award certifies that Fleetwood has met Ford's rigid quality standards for utilizing a Ford chassis.

# 2001 BOUNDER INTERIOR FABRICS

**Your motor home takes you to new adventures every day.** And since this home will be an enduring part of your life, we offer a selection of colors and textures that are a fine blend of classic and contemporary style. We search to obtain quality fabrics that are elegant, yet durable, to keep up with your active lifestyle. Year after year, the look will be as welcoming to you as it is to your guests.

## GARDEN LARKSPUR



## SHIMMERING SILVERLEAF



## MISTY FERN



## FLEETWOOD FAMILY FUN... THE JOURNEY CONTINUES

Where do you want to be? The possibilities are almost limitless. From mini motor homes to luxury coaches, from gas to diesel performance, there's a Fleetwood motor home to fulfill your dreams.

We know exactly how you feel, realizing there's a whole new world to experience. That's why we made sure you can choose from the broadest selection of brands and floor plans the world has to offer. It's no wonder that one out of four motor homes sold is a Fleetwood.\*

This is your journey. Take it for a spin.

\*According to Statistical Surveys Jan.'99 - Dec.'99

**FLEETWOOD® RV**

© 2000 Fleetwood Enterprises, Inc.  
Inventory Control Number BO01B1/1st Edition 7/00

