



This volume is dedicated to the memory of

Mrs. Eva Couillard Keenan

lifetime resident of Maitland Plantation and  
the great granddaughter of its founder.





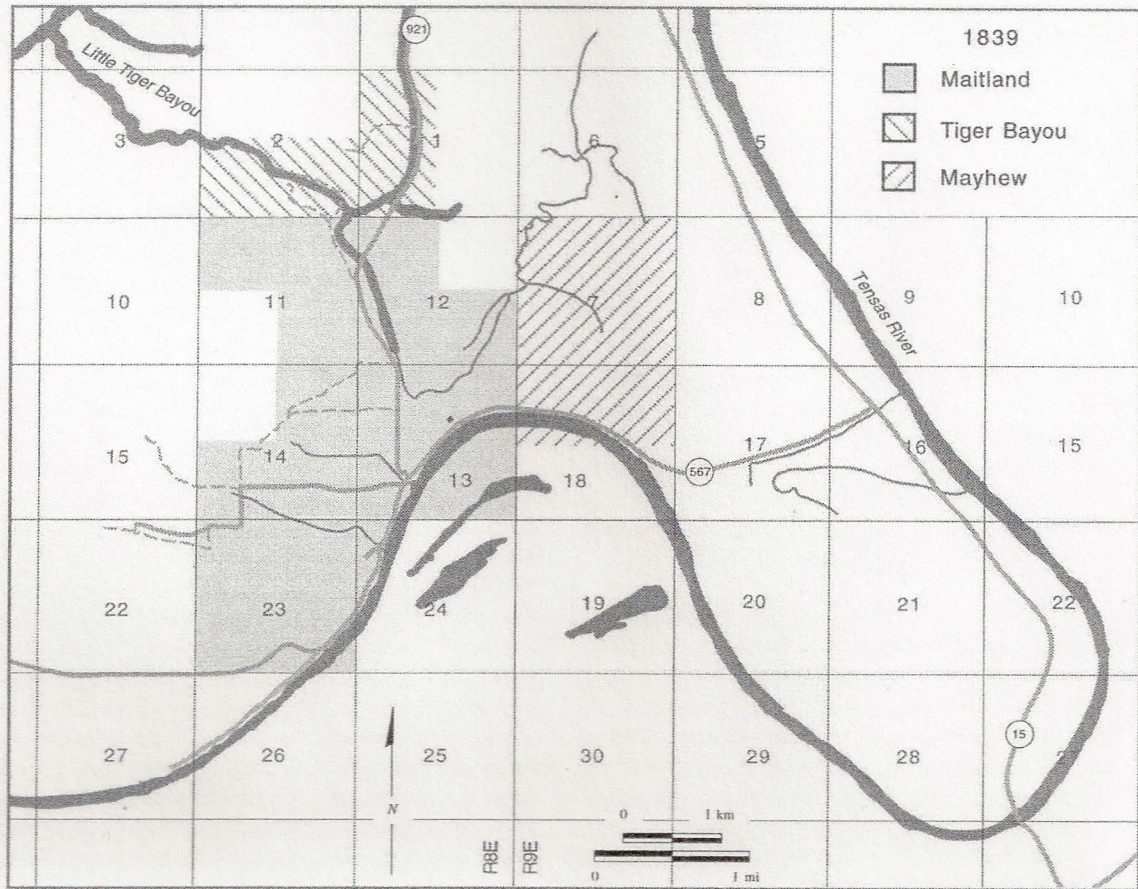
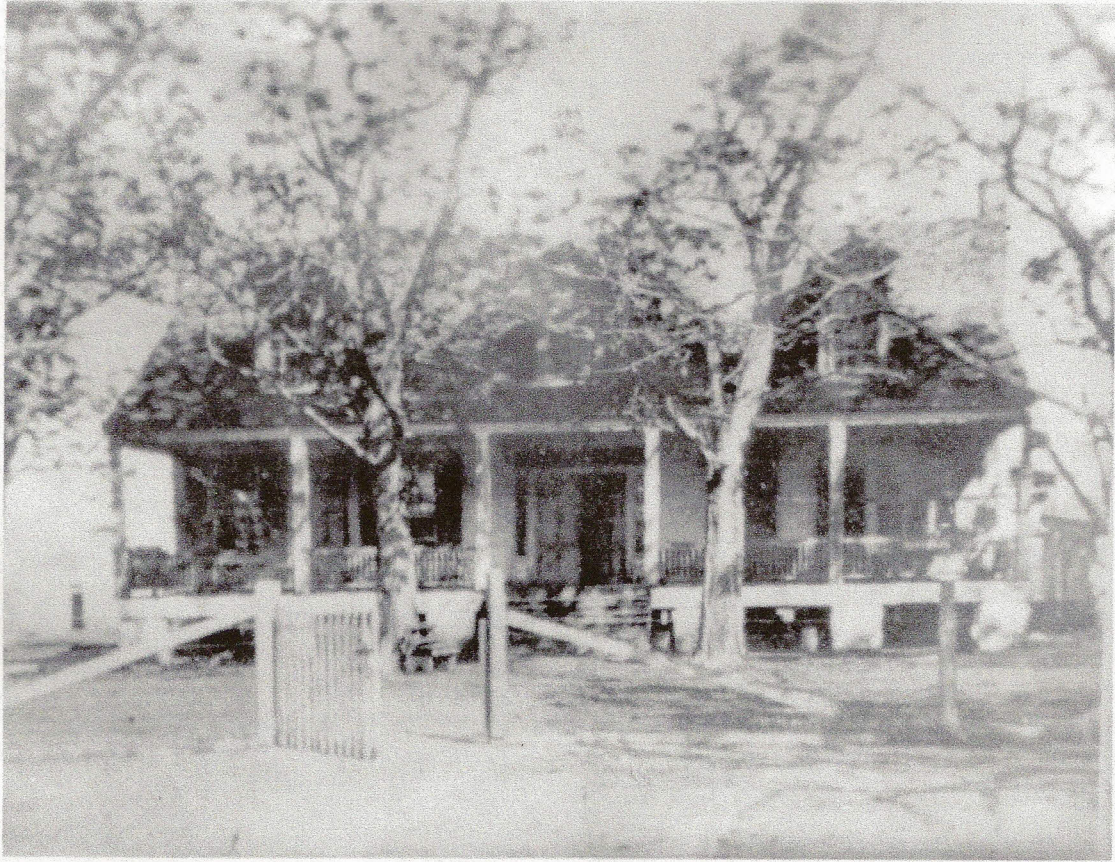


Figure 4-2. Property owned by the Gilbert family in 1839 (source: LSLO LA. Tract Book 19A, var. yrs.).



**Figure 4-3.** Undated photograph of Maitland Plantation house prior to 1945 remodelling (photograph courtesy of Mrs. Eva Keenan).



Figure 4-4. The Maitland Plantation family cemetery. Mrs. Eva Keenan stands before the graves of her grandparents, Ellen Gilbert and John Couillard. View to the northwest. Date: 3/18/94.

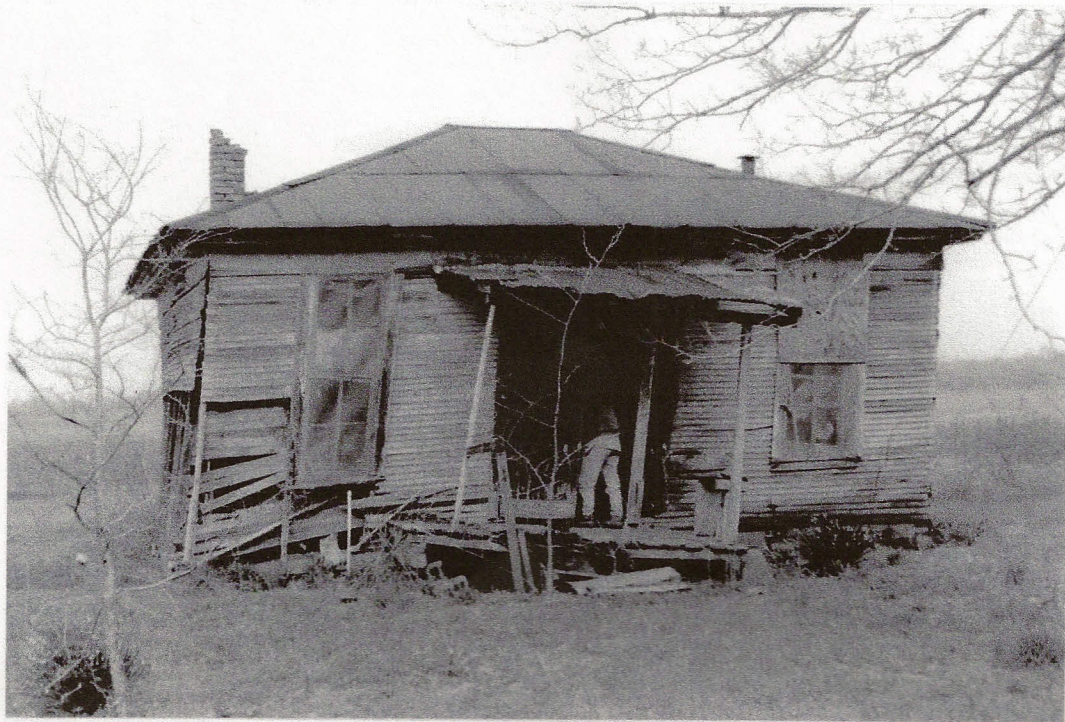


Figure 4-12. The Maitland School House prior to its destruction in 1995. View to the northeast.  
Date: 3/18/94.