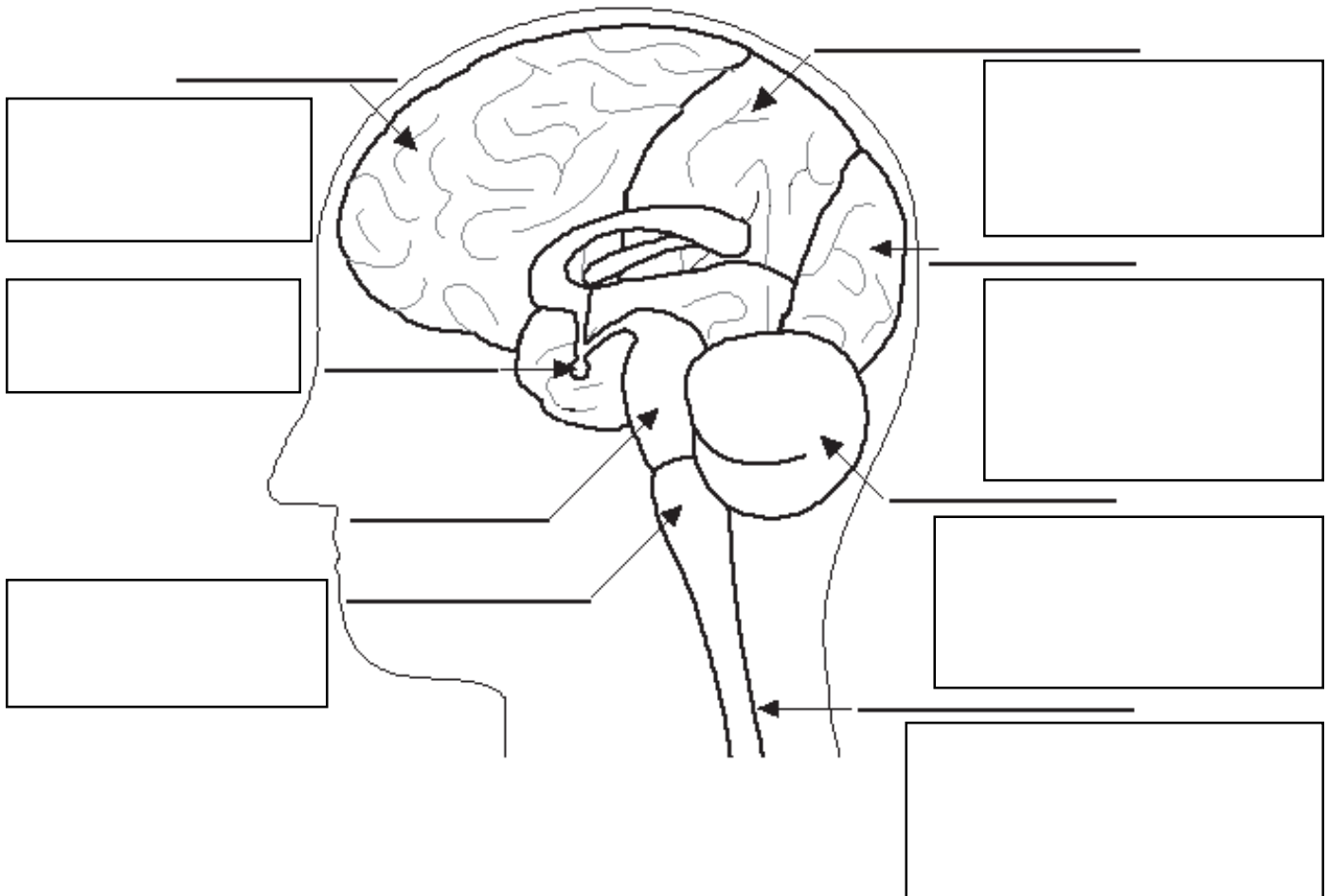


Read pages 498-506 in your textbook.

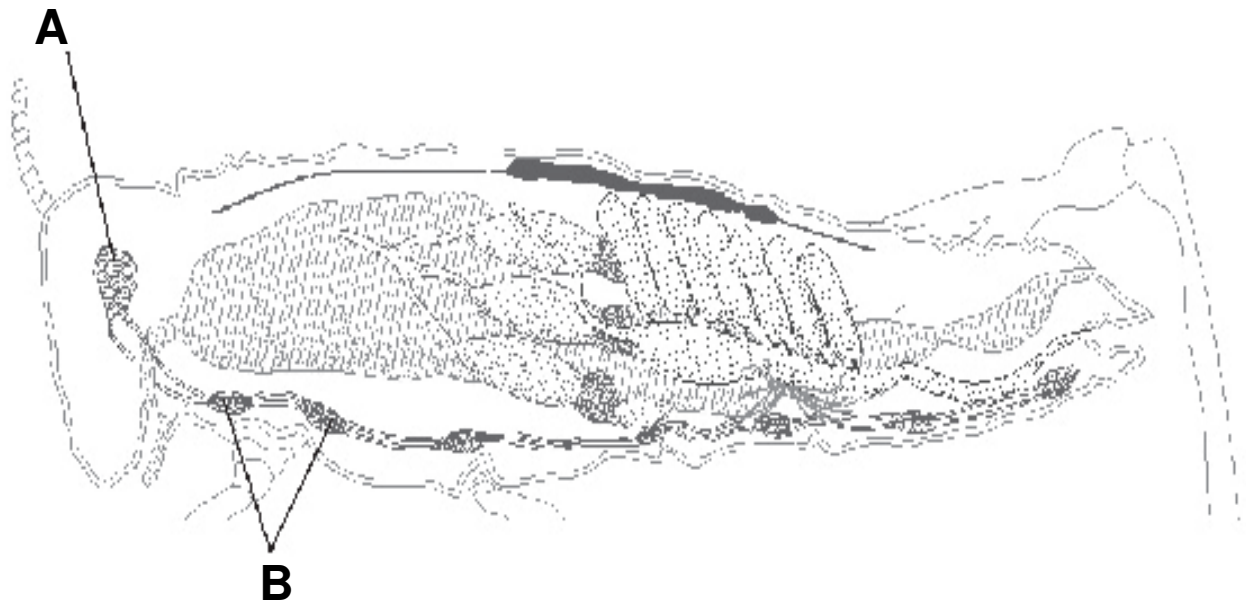
A. Label the following diagram.

In the box next to the label, briefly describe what the labeled part does. If there is no box, you do not need to write a description.

Lateral View of the Brain



B. Label the parts of the Grasshopper Central Nervous System

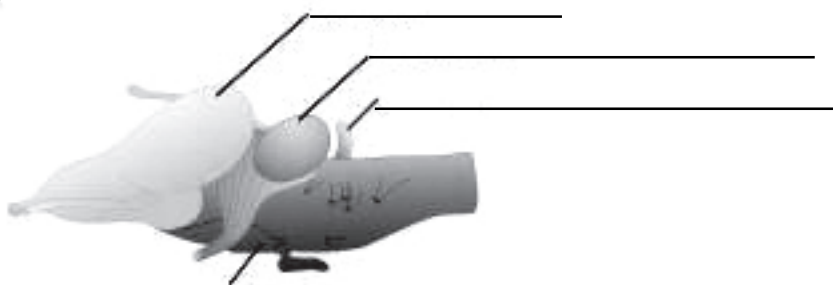


A _____

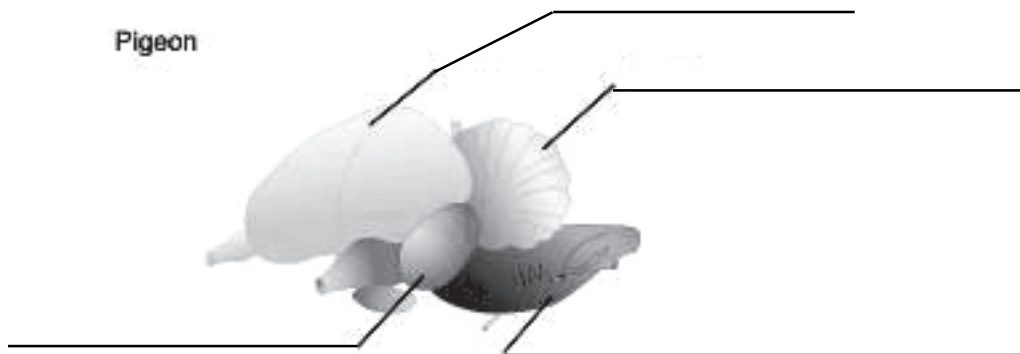
B _____

C. Label the parts of the animal brains shown below.

Frog



Pigeon



Dog

