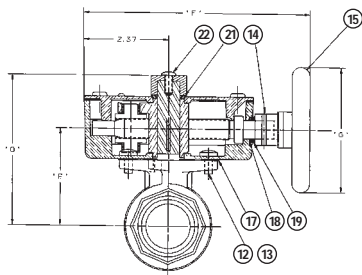
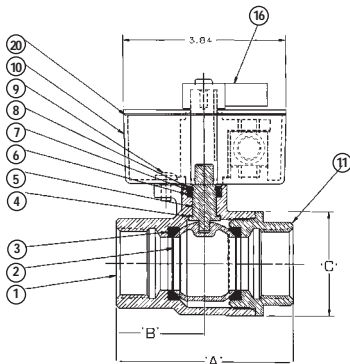




# 300 lb. wwp bronze ball valve

Fire Protection Valve • UL Listed for Indoor and Outdoor Service • FMRC Approved • California State Fire Marshal Listing No. 7770-1243:103 • Conforms to MSS SP-110  
 Threaded or Grooved Body Style • Full Port Design 1" - 2" • Standard Port Design 2 1/2" •  
 Accepts Internal Supervisory Switches\*

## 300 PSI Non-Shock Cold Water



KT-505W

### MATERIALS LIST FOR KT-505W & KG-505W

PART	SPECIFICATION
1. Body	Bronze ASTM B-584 Alloy C844
2. Ball	Bronze ASTM B-584 Alloy C844
3. Seat Ring	Carbon-filled TFE
4. Thrust Washer	Reinforced TFE
5. Stem	Bronze ASTM B-371 Alloy C694
6. Stem O-Ring	Nitrile
7. Retaining Washer	Brass
8. Retaining Ring	Steel
9. Ground Wire Screw	Steel
10. 505-8 Act Assy.	Brass
11. Body End	Bronze ASTM B-584 Alloy C844
12. Mounting Screw	Steel
13. Lock Washer	Steel
14. Handle Pin	Brass
15. Hand Wheel	Steel/plastisol coated (1 1/4" - 2 1/2") Brass Tee Handle (1")
16. Indicator Flag	Painted Steel
17. Body Gasket	Elastomer
18. Lead Screw O-Ring	Nitrile
19. Thrust Washer	Anti-friction Polymer
20. Cover Gasket	Neoprene
21. Flag Seal O-Ring	Nitrile
22. Tamper-Pruf Screw	Steel



KT-505W-8\*  
threaded



KG-505W-8\*  
grooved

\*-4 version has no factory mounted internal supervisory switches.  
 Refer to page 45 for details for TS-2M Switch Kit.

### DIMENSIONS - WEIGHTS - QUANTITIES

Size	A		B		C	D	E	F	G	C.V.† Value	Weight		Box Qty	M.C. Qty
	Thd	Gvd	Thd	Gvd							Thd	Gvd		
1	3.33	—	1.66	—	2.11	3.81	2.31	6.14	1.75	57	5.6	—	1	10
1 1/4	4.18	—	2.09	—	2.46	4.21	2.72	6.33	3.50	103	6.8	—	1	8
1 1/2	4.70	—	2.35	—	2.95	4.46	2.97	6.33	3.50	143	8.3	—	1	4
2	5.15	6.71	2.57	3.36	3.69	4.67	3.18	6.33	3.50	245	10.1	9.7	1	4
2 1/2	5.65	7.28	2.92	3.64	3.75	4.67	3.18	6.33	3.50	183	11.7	11.7	1	4

† NOTE: C.V. is defined as the flow in GPM that a valve will carry with a pressure drop of 1.0 psi when the media is water at 60° F.

