

Tuck-in Enable beds

To turn all your single beds into tuck-in enable, you'll need 2 very useful and Oh so known programs, The Sims Transmogrifier, and IFFPensil2.

This is very simple and easy, a matter of minutes...:0)

First step

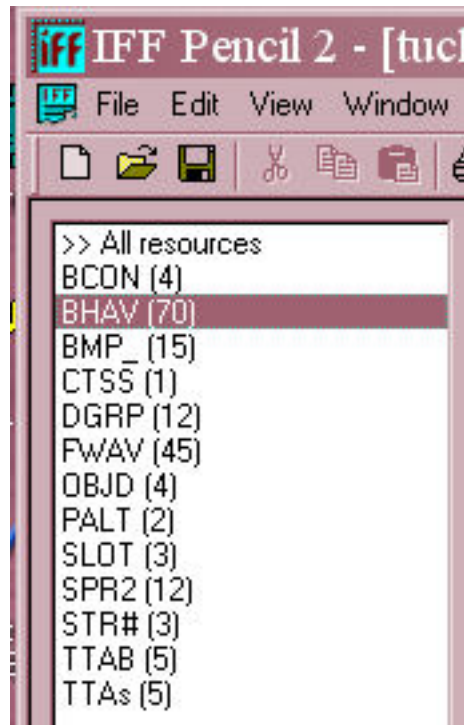
Choose among all your single Maxis made beds, the one you want to hack, in your Transmogrifier's list. Yeah...open your Transmogrifier :0)

I recommend you edit or hack only Maxis made objects, but of course, it is up to you. Just don't forget about the user creator's policy.

Clone that bed, give it a brand new name, and edit it. Change the price, and the description; up to you again, but you way be anxious to see if you did it right, and it will be easier for you to find the bed in the game, if you edit it now.

All done cloning?

Okay. Now launch your IFFPencil program, and Open your new cloned bed.
 You want to edit the BAHV, so click on it, on your left.



Now, look for "Tuck-in test"
 double click on it.

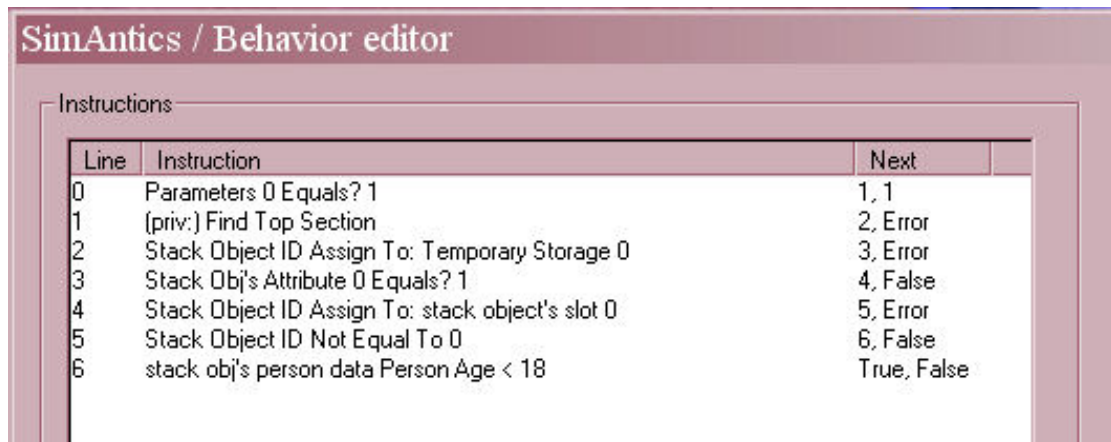
Here's what a normal bed has to say:

SimAntics / Behavior editor

Instructions

Line	Instruction	Next
0	Parameters 0 Equals? 1	1, False
1	(priv:) Find Top Section	2, Error
2	Stack Object ID Assign To: Temporary Storage 0	3, Error
3	Stack Obj's Attribute 0 Equals? 1	4, False
4	Stack Object ID Assign To: stack object's slot 0	6, Error
5	stack ob's person data Person Age < 18	True, False
6	Stack Object ID Not Equal To 0	5, False

Now, change it for this:



The screenshot shows a window titled "SimAntics / Behavior editor" with a section labeled "Instructions". It contains a table with three columns: "Line", "Instruction", and "Next".

Line	Instruction	Next
0	Parameters 0 Equals? 1	1, 1
1	(priv:) Find Top Section	2, Error
2	Stack Object ID Assign To: Temporary Storage 0	3, Error
3	Stack Obj's Attribute 0 Equals? 1	4, False
4	Stack Object ID Assign To: stack object's slot 0	5, Error
5	Stack Object ID Not Equal To 0	6, False
6	stack obj's person data Person Age < 18	True, False

And you are done; you now have a tuck-in enable bed.

That was easy :0)

But...only adults simmies are allowed to tuck-in, and don't think about the guests!

Want to change that too?

Done with the BAHV, now click on STR#, again, on your left.

If you click on a2o, you'll see a bunch of animations, an adult sim will perform while interacting with the bed.

If you scroll all the way down, you'll see the tuck-in animations, #59, and #60

But, if you click on c2o, there will be no #59 and #60, because there are no children tuck-in animations, in the game...:0/

So we'll have to copy the adult's ones, and add them to the c2o strings.

Click again on a2o. Go all the way down, and click on #59.

Then, copy the A2O-kid-tuckin-R that will appear in the box underneath...

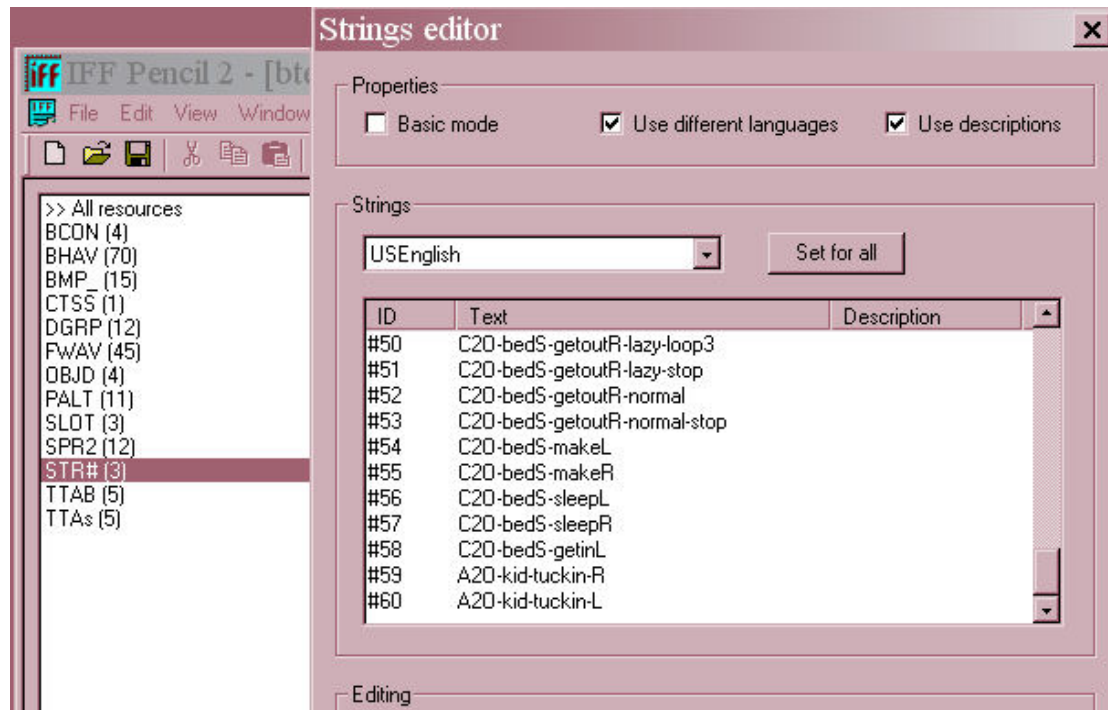
Close that window by clicking CANCEL

Click again on c2o, then anywhere in that window right click and select add.

Enter # 59, then paste that A2O-kid-tuckin-R in the box underneath.

Do the same for #60, A2O-kid-tuckin-L.

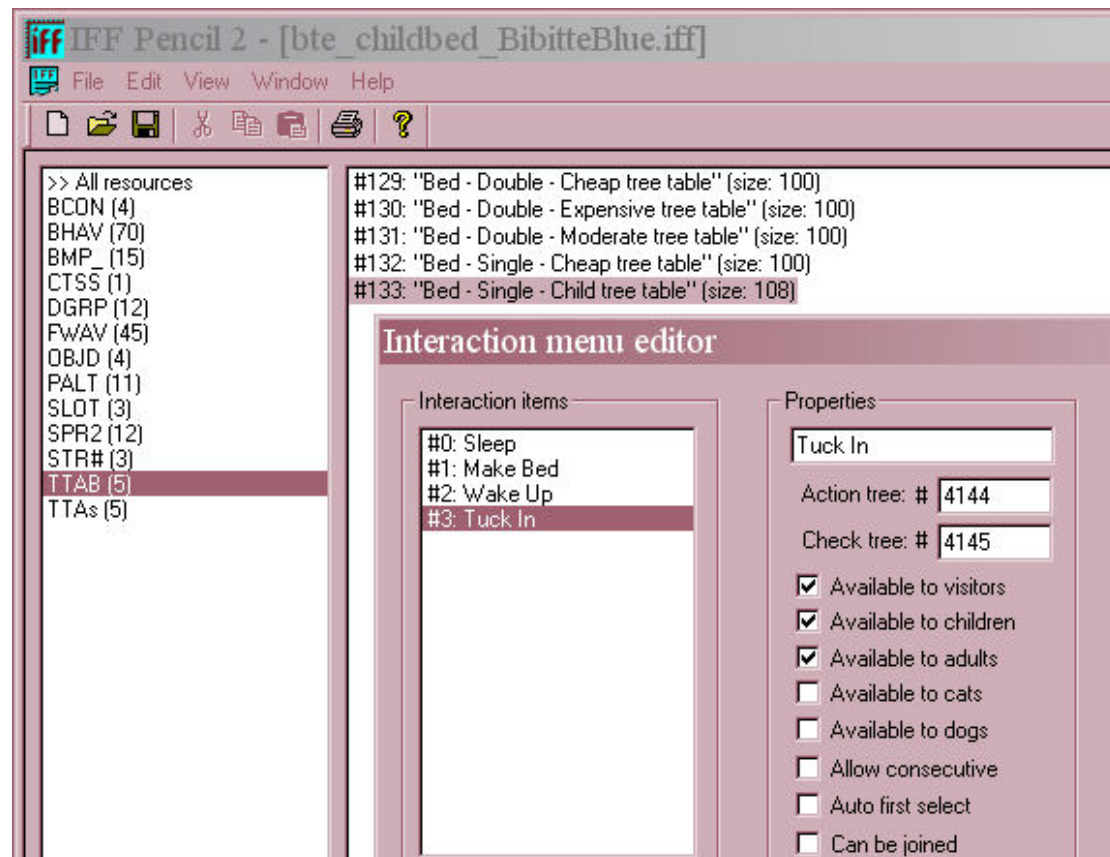
And you should have this, when done:



Okay! almost done.

Go to TTAB, and select the # for your bed, I cloned the all colorful child bed, from TSO, so the # I selected is #133

Double click on it....then make it available to all! :



*****YOU ARE DONE*****

Don't hesitate if you have any problems, questions or comments or if you think I missed something!...I love truth. [email me!](#)

Thank you,
Rosemary :0)

