

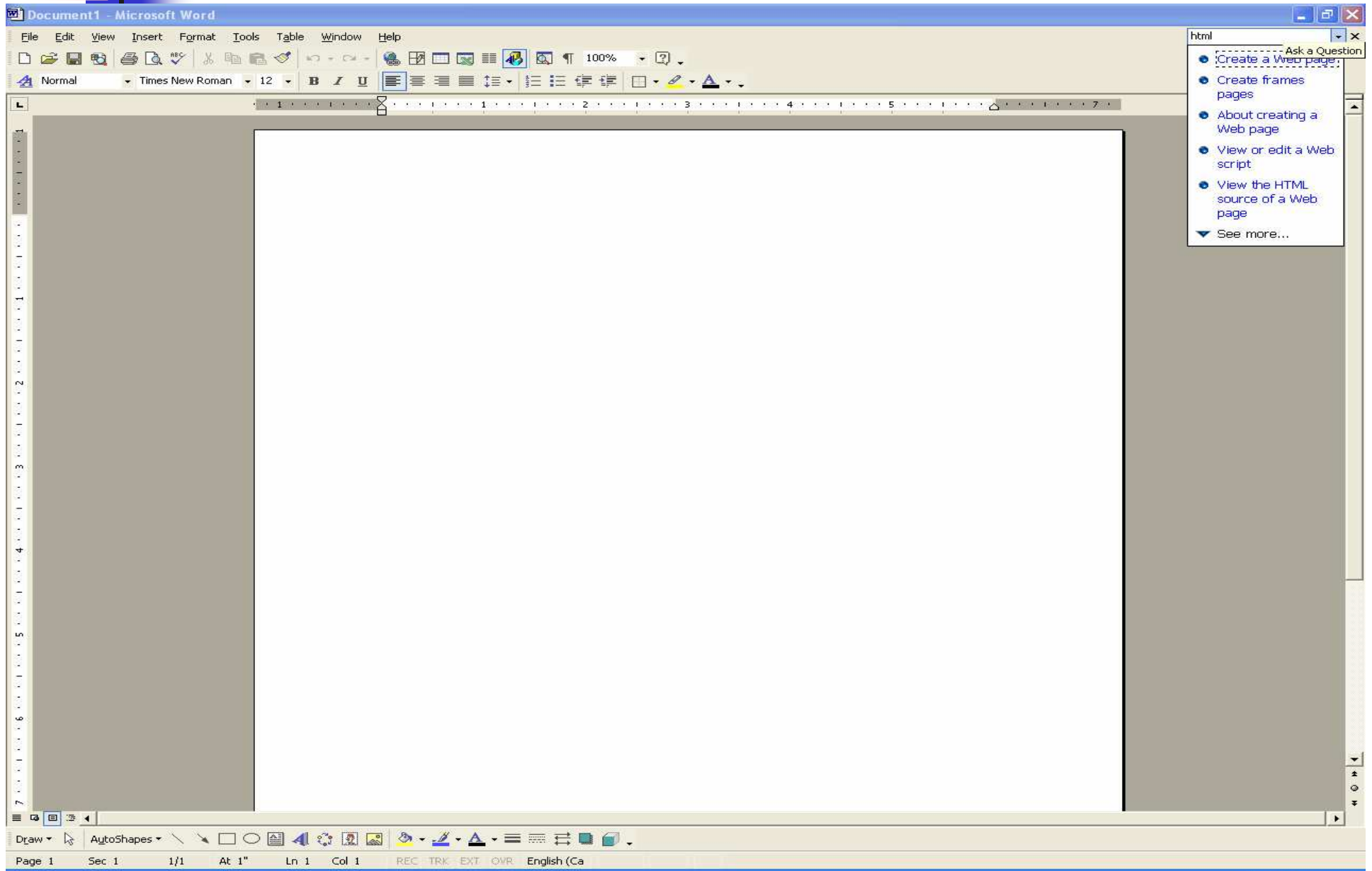


# HTML with MS Word

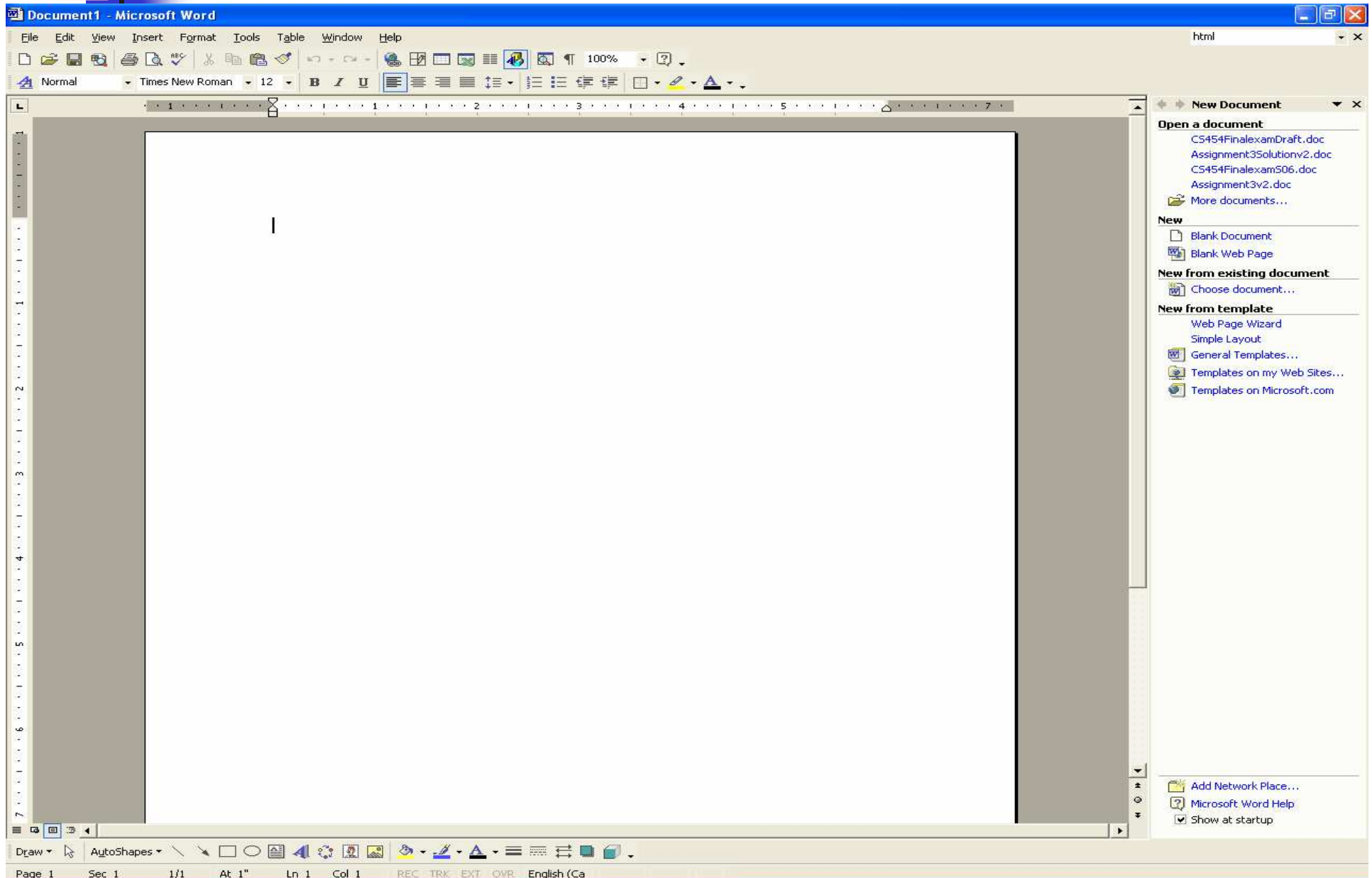
---



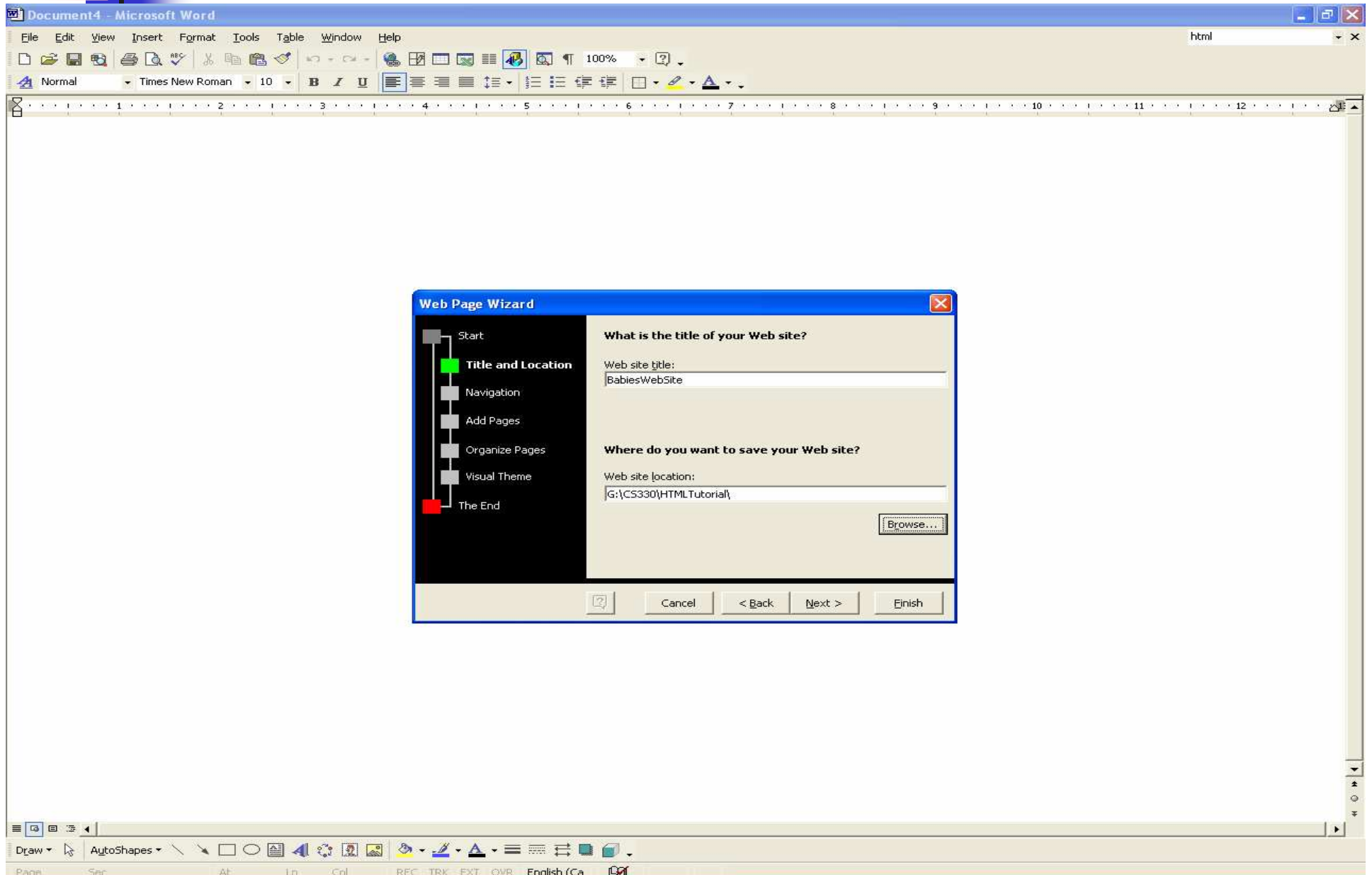
# Seeking Help



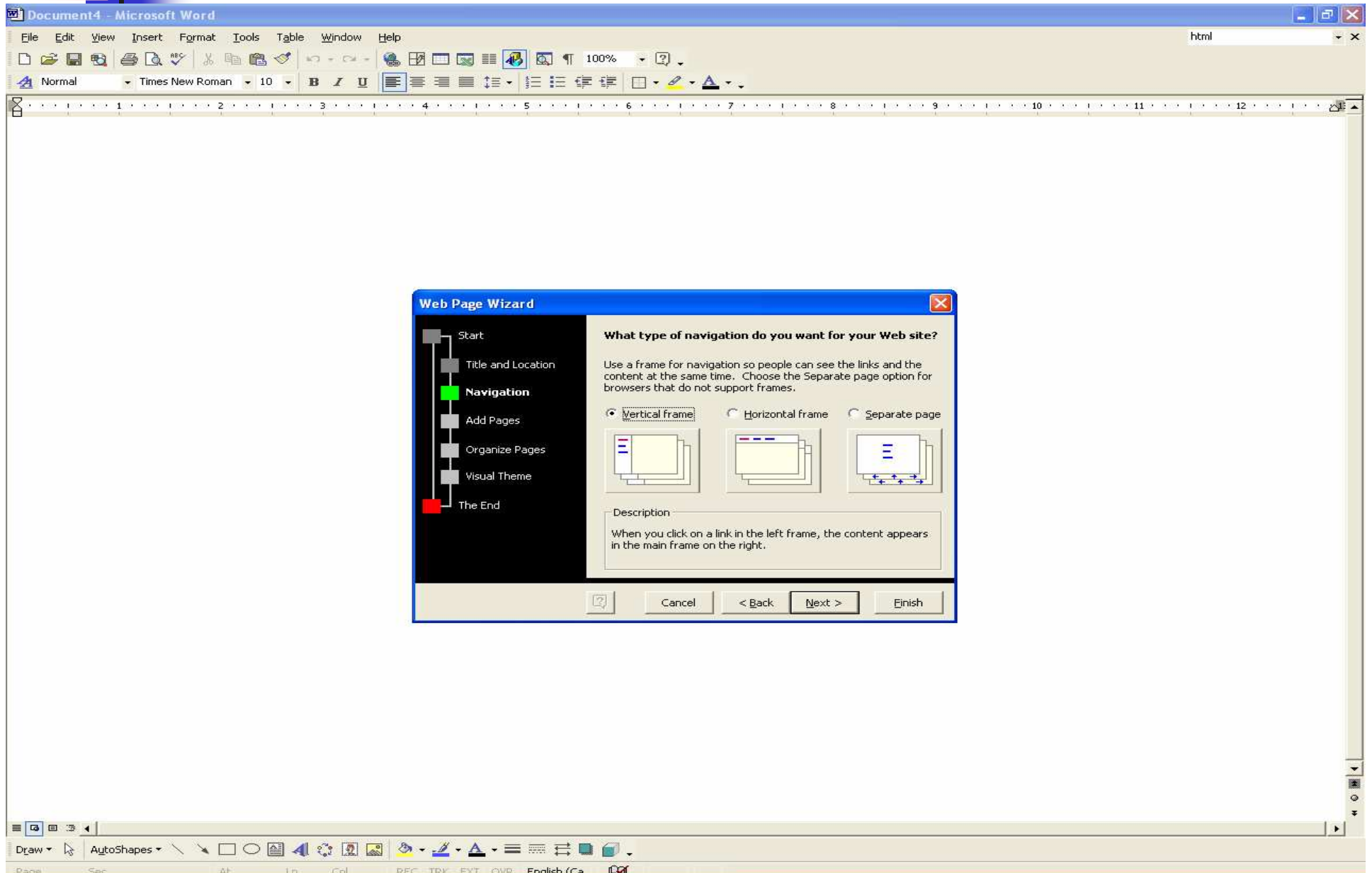
# Using the webpage Wizard



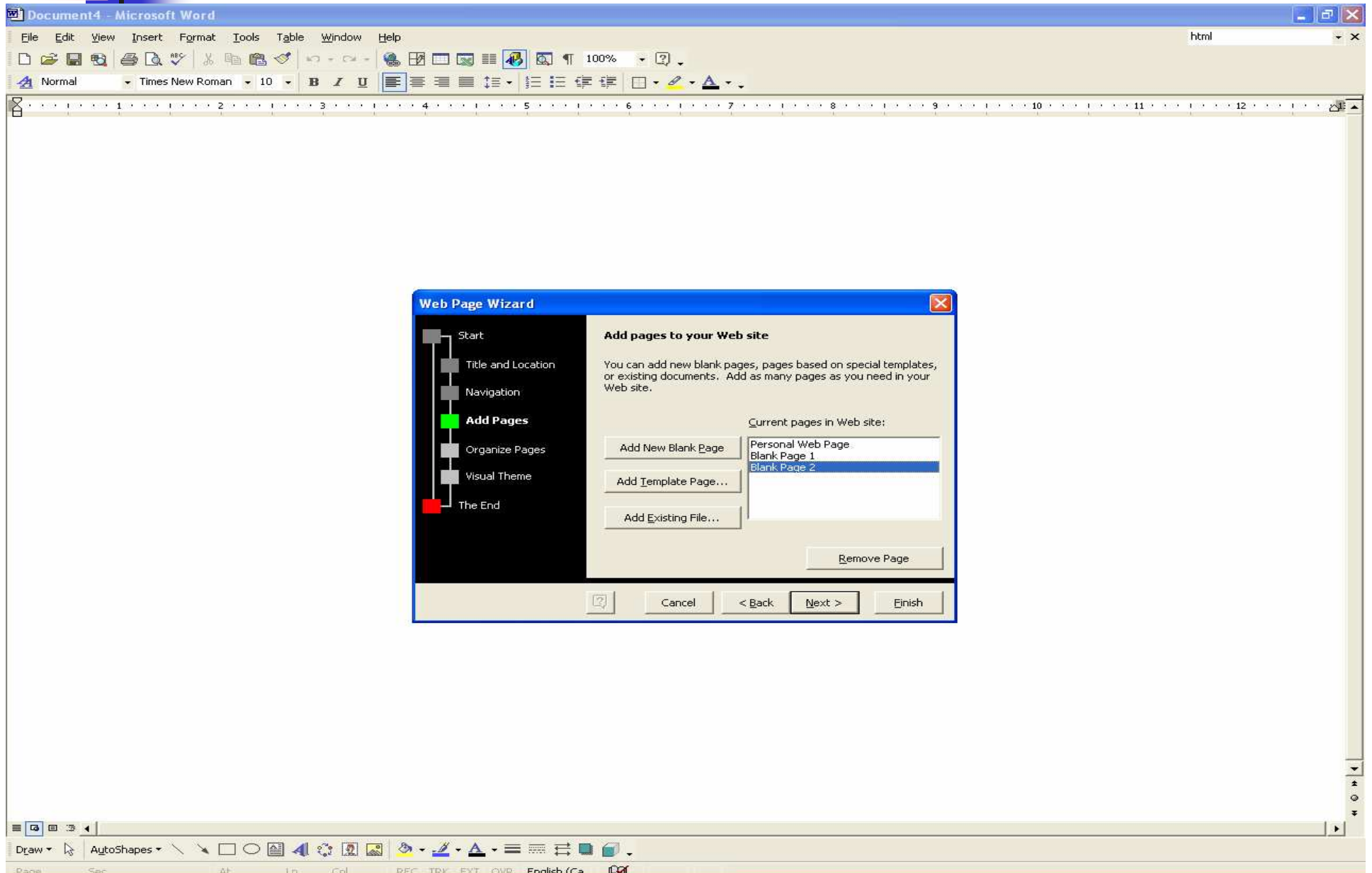
# Give your website a title



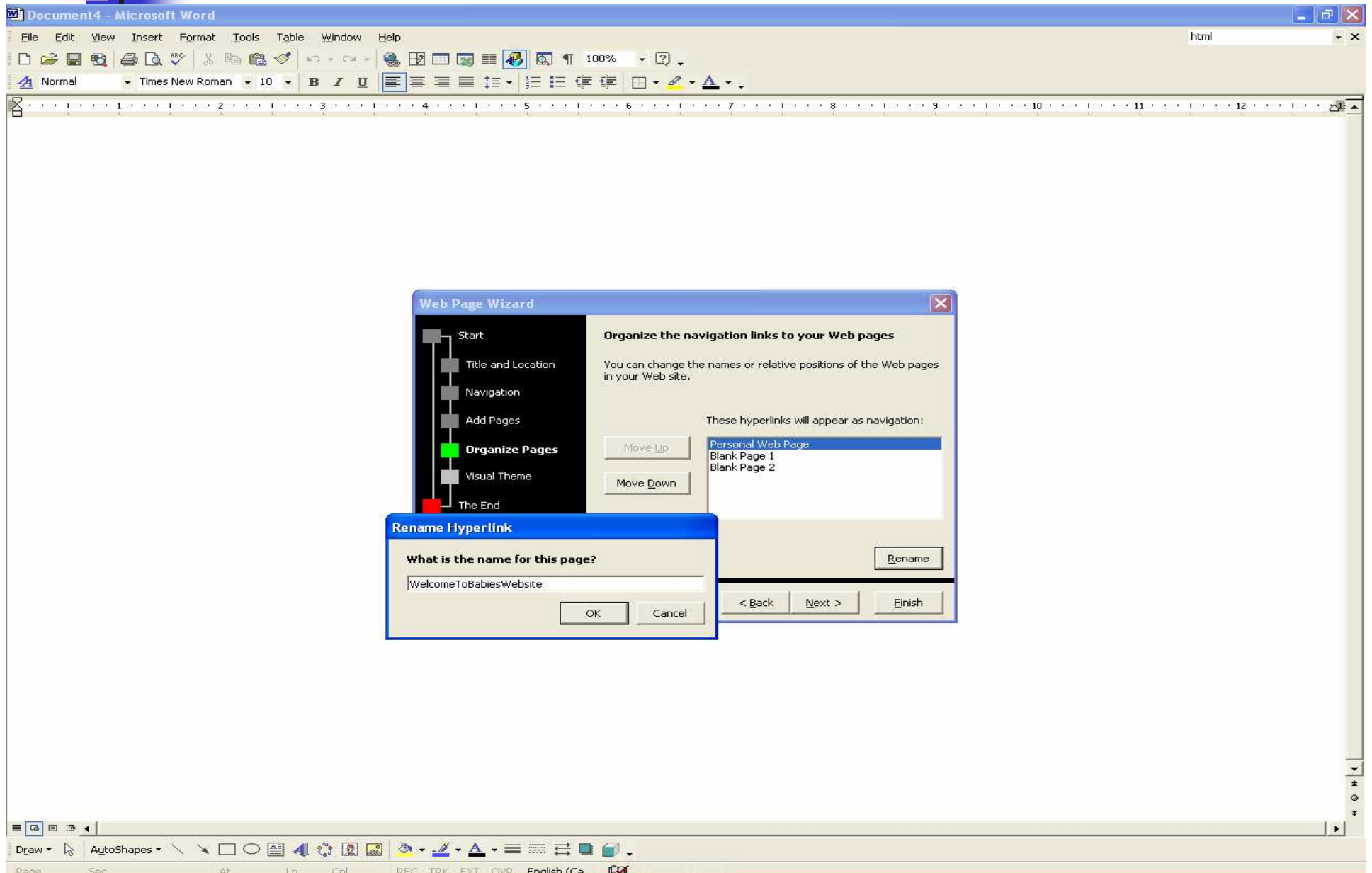
# Choose the type of navigation



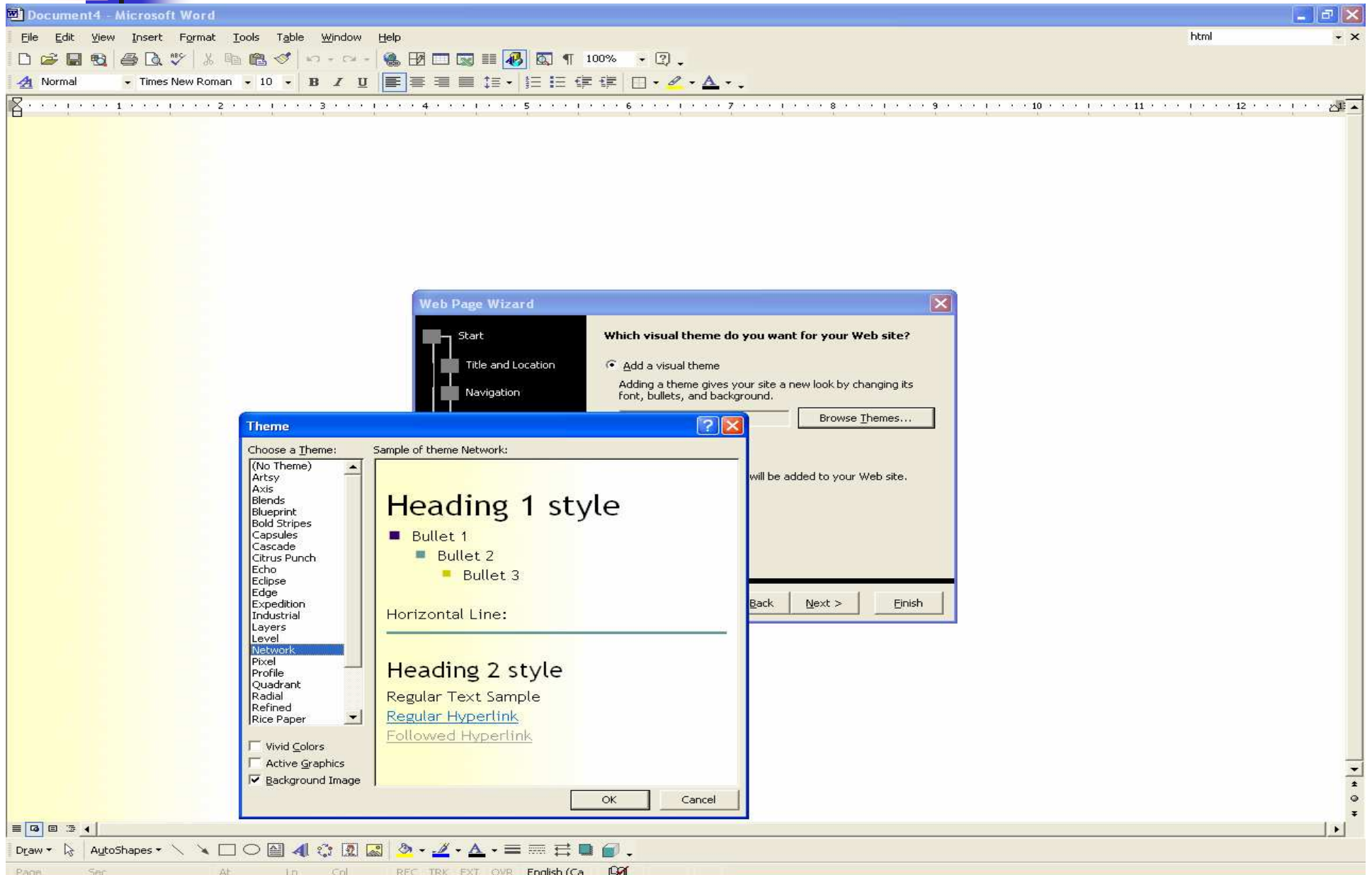
# Add pages to your website



# Change the names of your pages

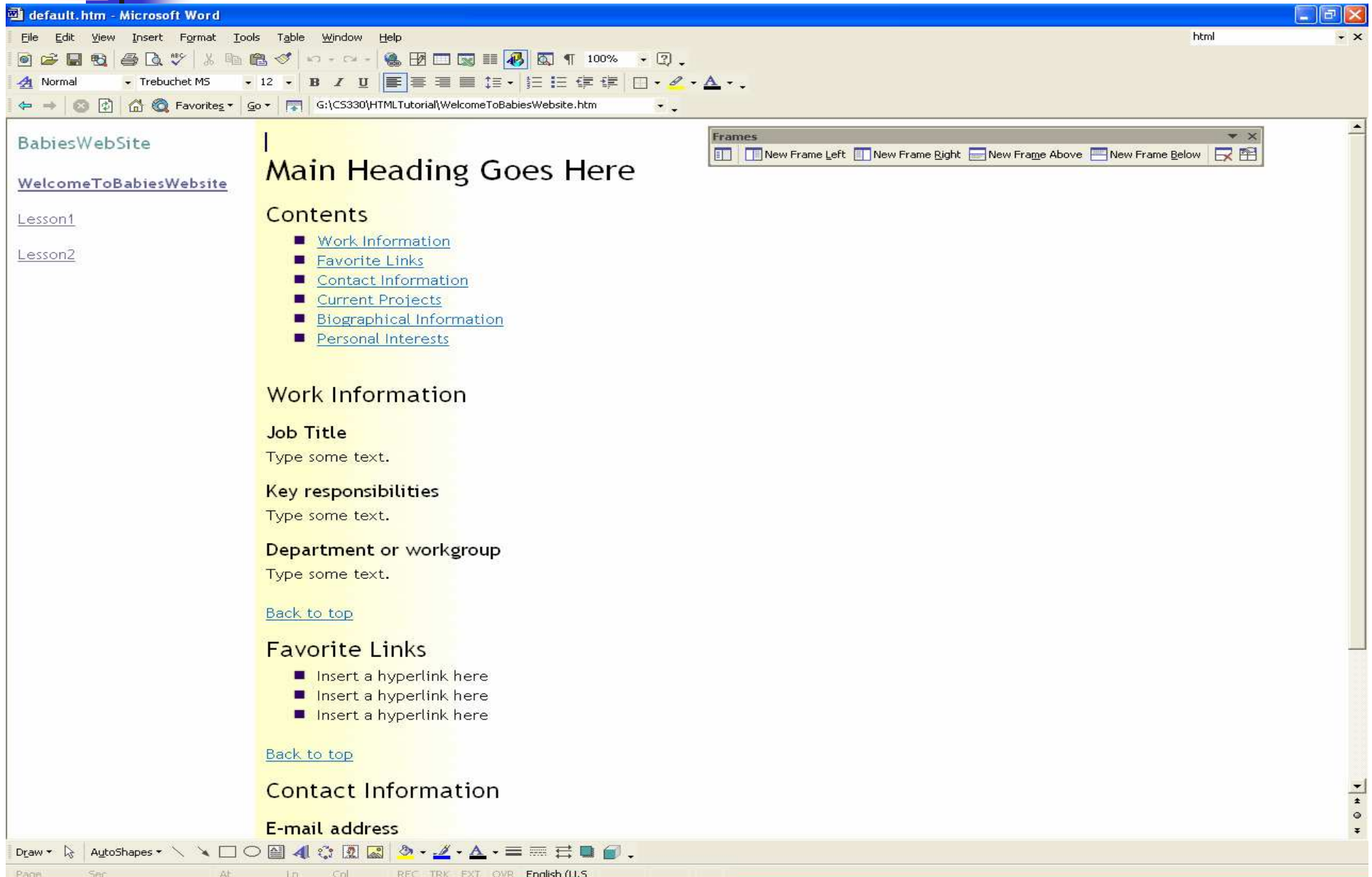


# Choose a visual theme

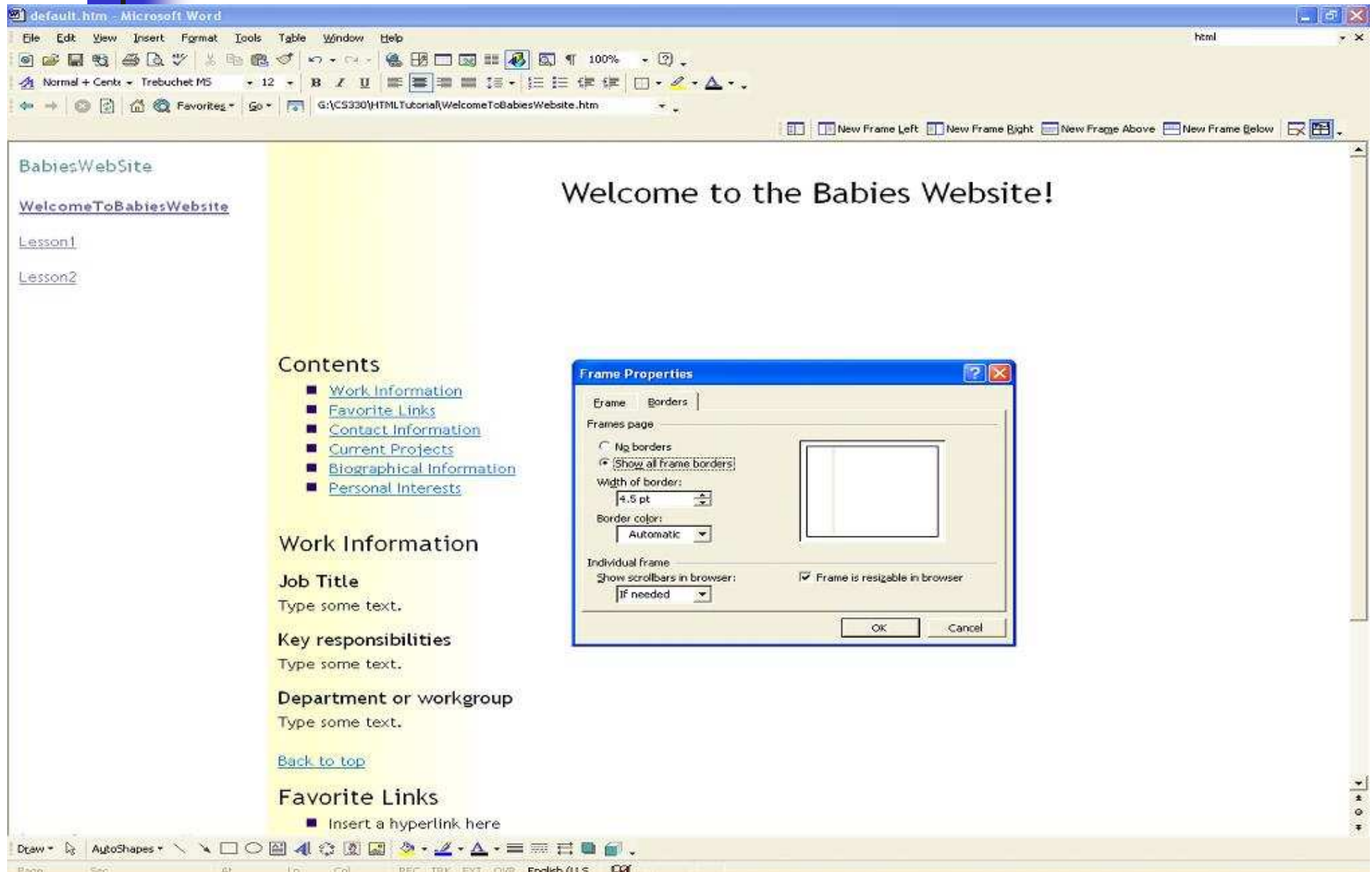




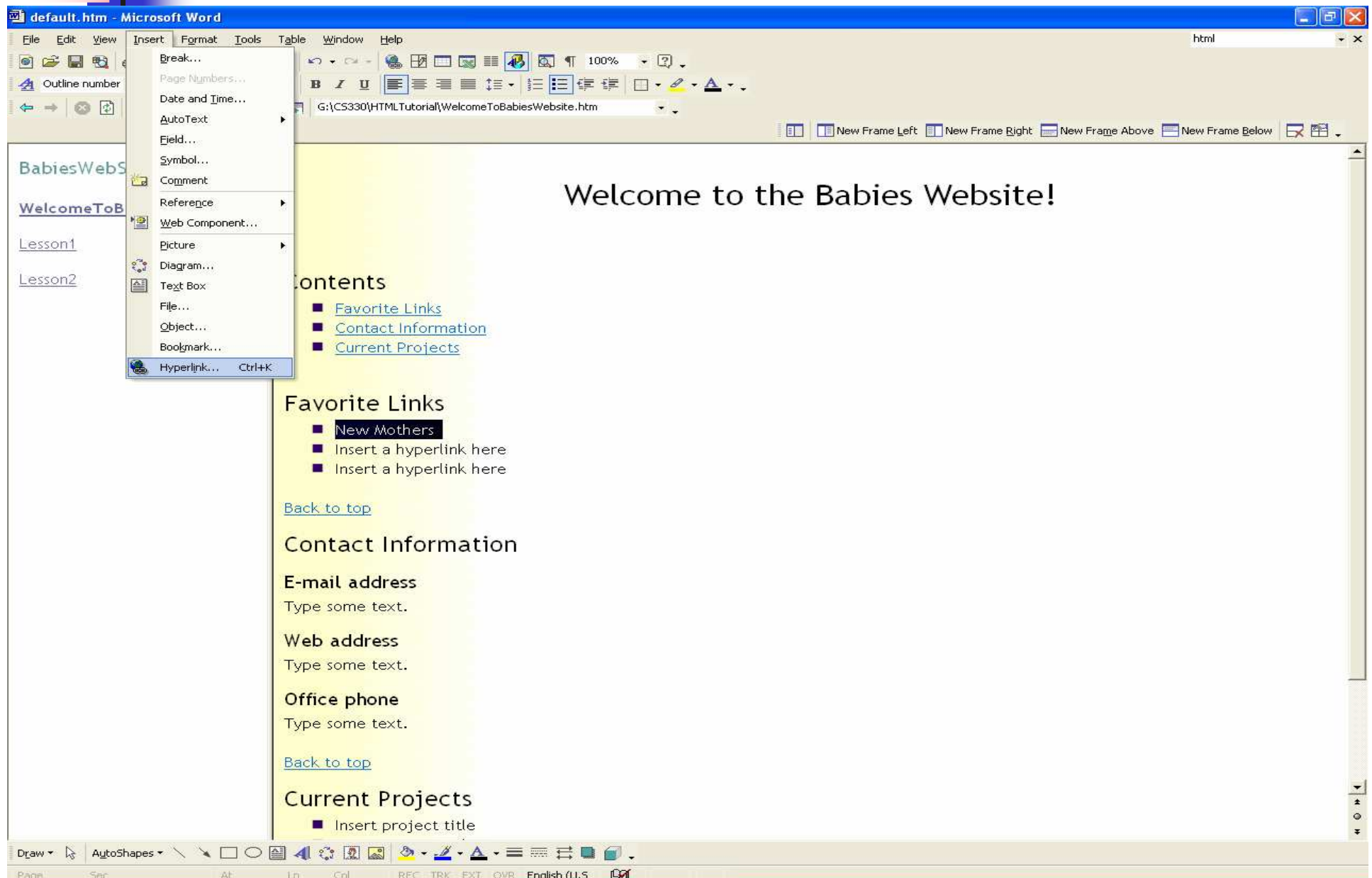
# The Website!



- Replace existing text with your own
- Frame borders



# Add new links



# Add new links

default.htm - Microsoft Word

File Edit View Insert Format Tools Table Window Help

Outline number Trebuchet MS 12

G:\CS330\HTMLTutorial\WelcomeToBabiesWebsite.htm

New Frame Left New Frame Right New Frame Above New Frame Below

BabiesWebSite

[WelcomeToBabiesWebsite](#)

[Lesson1](#)

[Lesson2](#)

Insert Hyperlink

Link to: Text to display: New Mothers

Look in: HTMLTutorial

Current Folder

- Lesson1\_files
- Lesson2\_files
- WelcomeToBabiesWebsite\_files
- Baby.jpg
- default.htm
- Lesson1.htm
- Lesson2.htm
- TOCFrame.htm
- WelcomeToBabiesWebsite.htm

Browsed Pages

Recent Files

Address: http://www.caaws.ca/mothersinmotion/baby/index\_e.html

OK Cancel

ScreenTip... Bookmark... Target Frame...

Contact Information

E-mail address

Type some text.

Web address

Type some text.

Office phone

Type some text.

[Back to top](#)

Current Projects

■ Insert project title

Page Sec At Ln Col REC TRK EXT OVR English (U.S)

# E-mail

default.htm - Microsoft Word

File Edit View Insert Format Tools Table Window Help

Normal Trebuchet MS 12 100%

G:\CS330\HTMLTutorial\WelcomeToBabiesWebsite.htm

New Frame Left New Frame Right New Frame Above New Frame Below

BabiesWebSite

[WelcomeToBabiesWebsite](#)

[Lesson1](#)

[Lesson2](#)

Insert Hyperlink

Link to: Text to display: send me an E-mail! ScreenTip...

Existing File or Web Page

E-mail address: mailto:nalmasri@uwaterloo.ca

Subject: Additional info

Recently used e-mail addresses:

OK Cancel

Contact Information

E-mail address

For additional Information [send me an E-mail!](#)

Web address

Type some text.

Office phone

Type some text.

[Back to top](#)

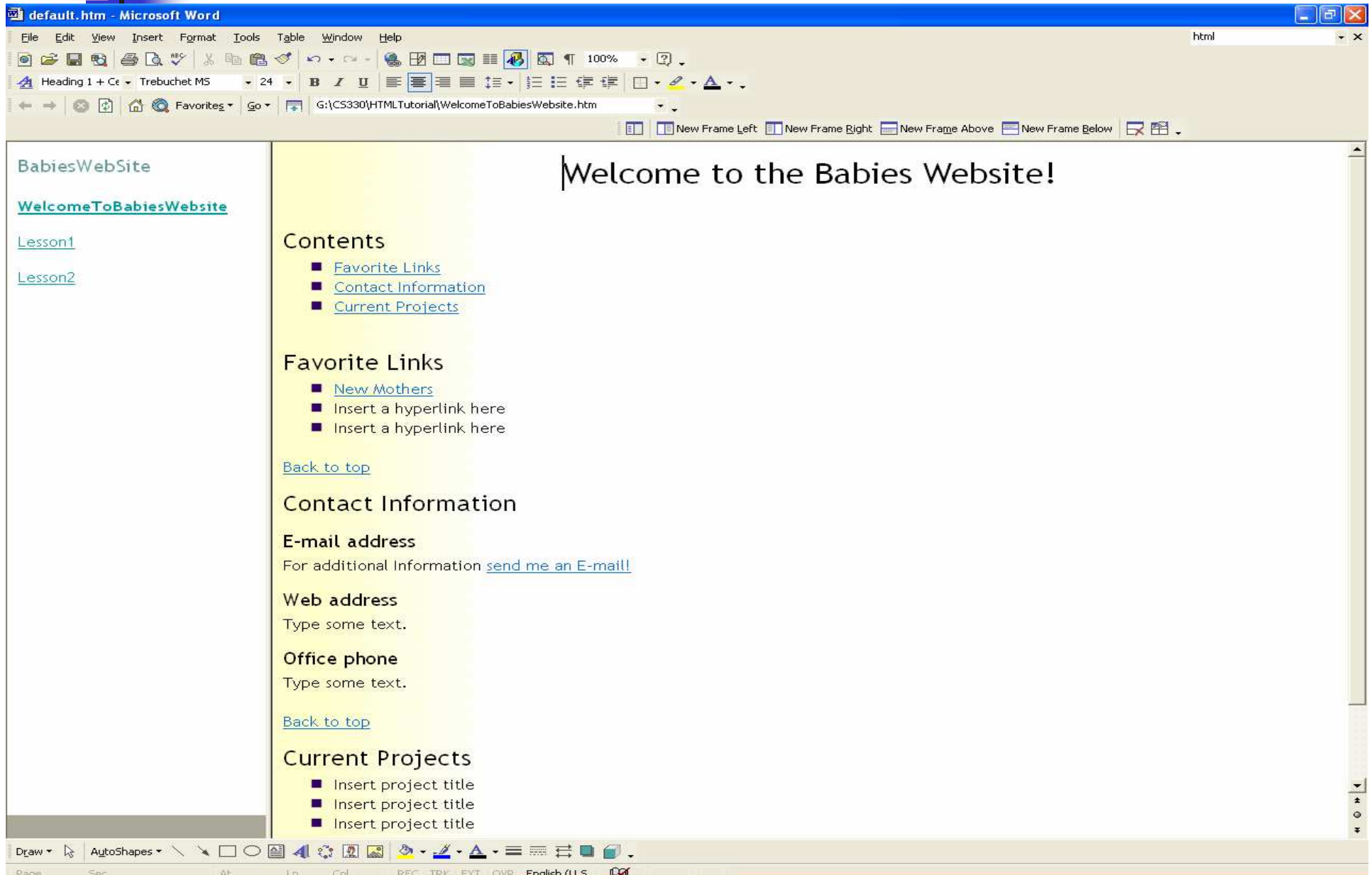
Current Projects

■ Insert project title

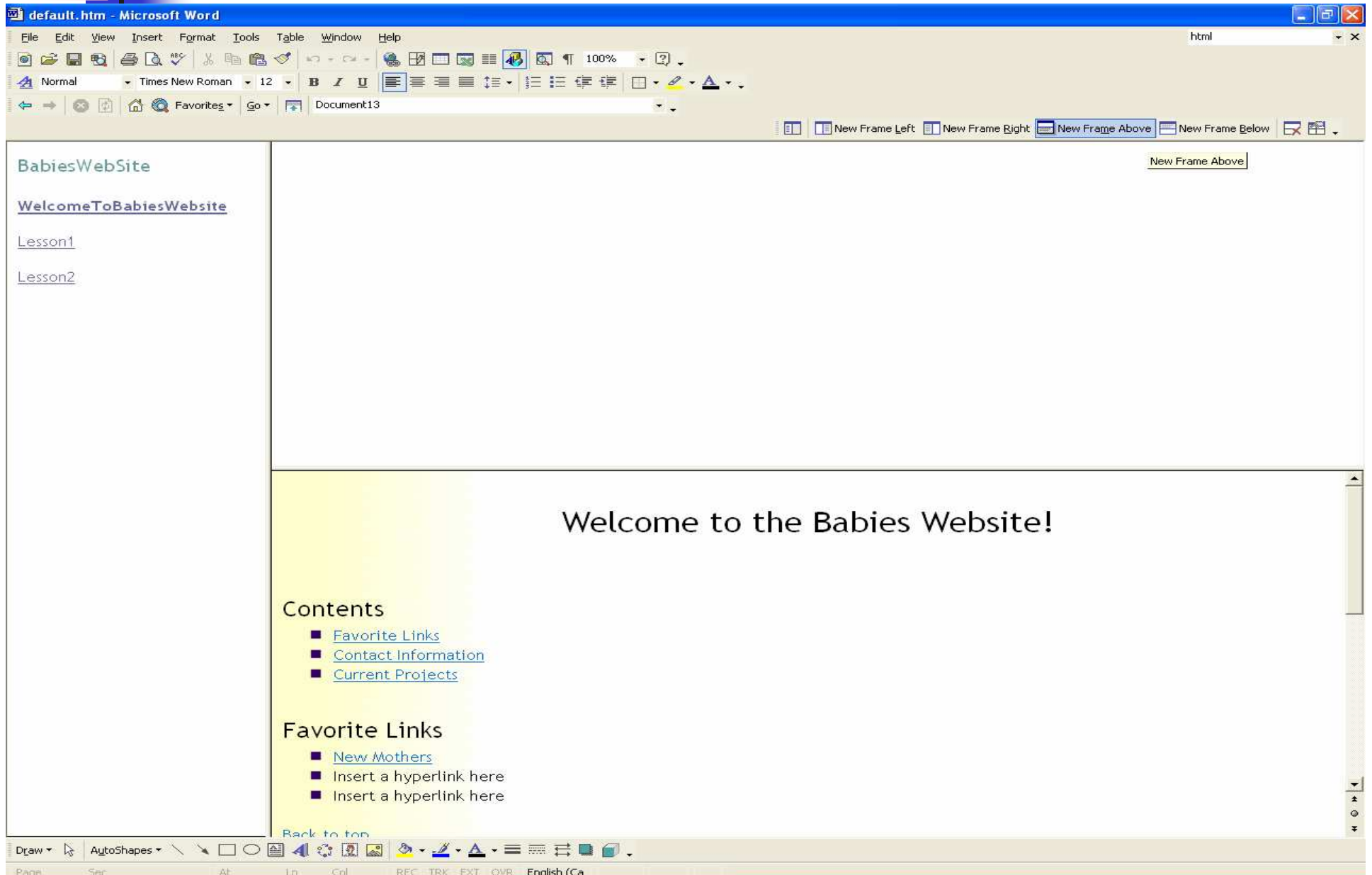
Page: Sec At Ln Col REC TRK EXT OVR English (U.S.)



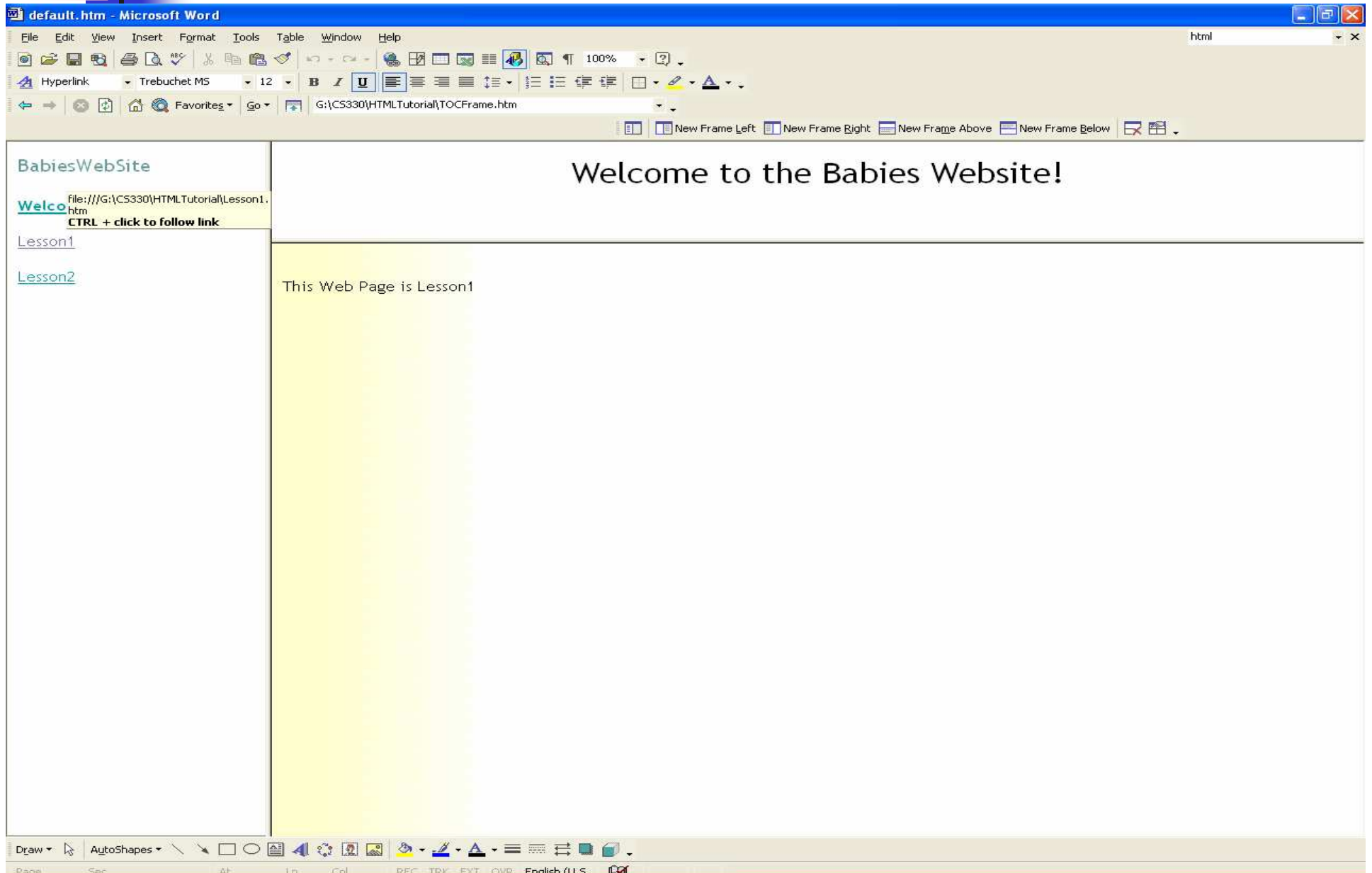
# Browse: Ctrl + click



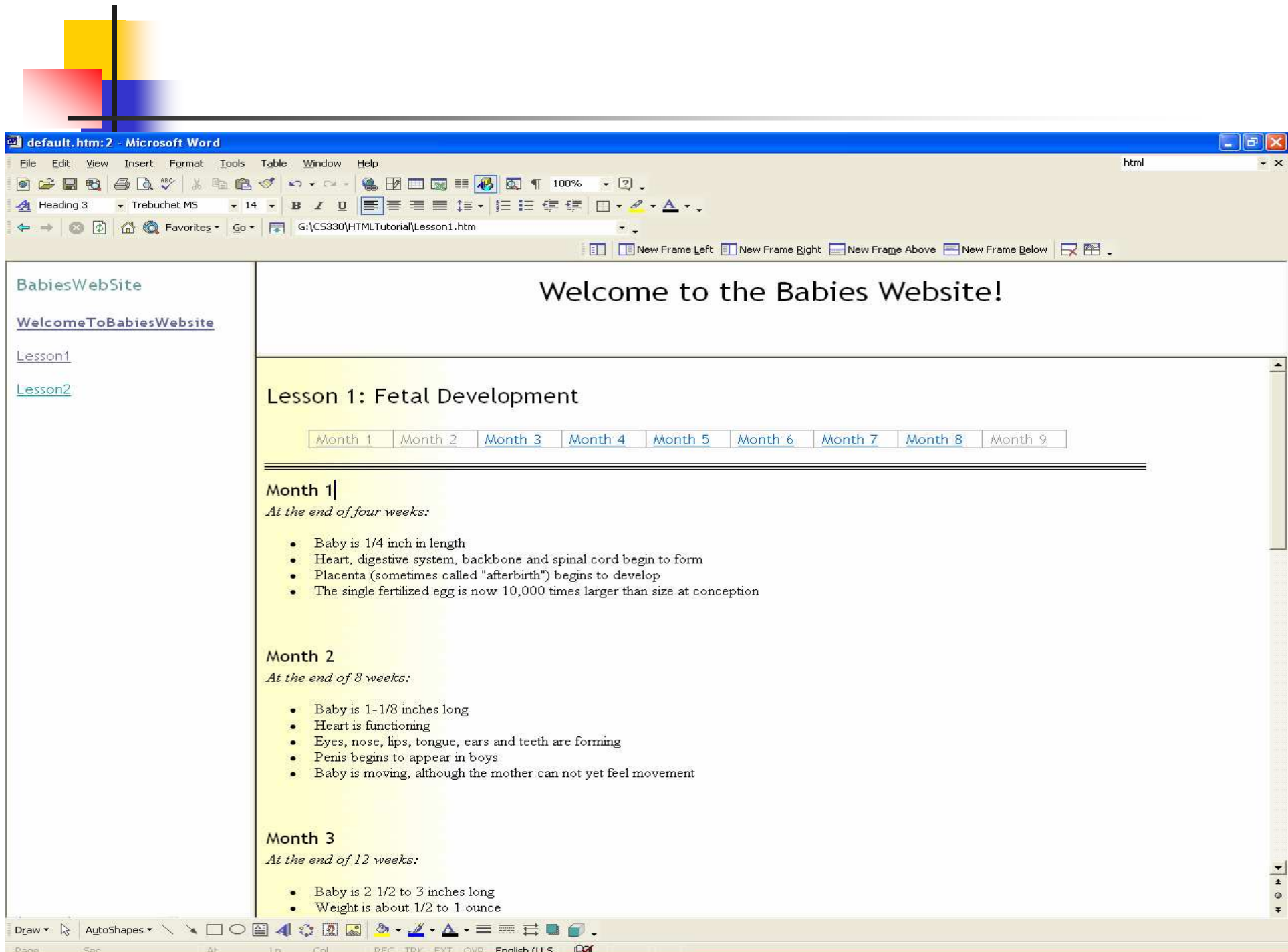
# Add a new frame



# Enhance the other pages







# Back to Top

The screenshot shows a Microsoft Word window titled 'default.htm:2 - Microsoft Word'. The menu bar includes File, Edit, View, Insert, Format, Tools, Table, Window, and Help. The toolbar shows various icons for editing and formatting. The status bar at the bottom indicates 'Page', 'Sec', 'At', 'Ln', 'Col', 'REC', 'TRK', 'EXT', 'OVR', and 'English (U.S.)'.

The main content area displays a web page layout. On the left, there is a sidebar titled 'BabiesWebSite' with links for 'WelcomeToBabiesWebsite', 'Lesson1', and 'Lesson2'. The main content area has a heading 'Welcome to the Babies Website!' and two sections: 'Month 3' and 'Month 4'. Each section contains a list of bullet points describing baby development.

An 'Insert Hyperlink' dialog box is open, showing the 'Text to display' as 'Back to Top'. The 'Link to' section is set to 'Text to display'. The 'Select a place in this document' list shows the following structure:

- Top of the Document
- Headings
  - Lesson 1: Fetal Development
    - Month 1
    - Month 2
    - Month 3
    - Month 4
    - Month 5
    - Month 6
    - Month 7
    - Month 8
    - Month 9

The 'Target Frame...' button is visible on the right side of the dialog box. The 'OK' and 'Cancel' buttons are at the bottom.

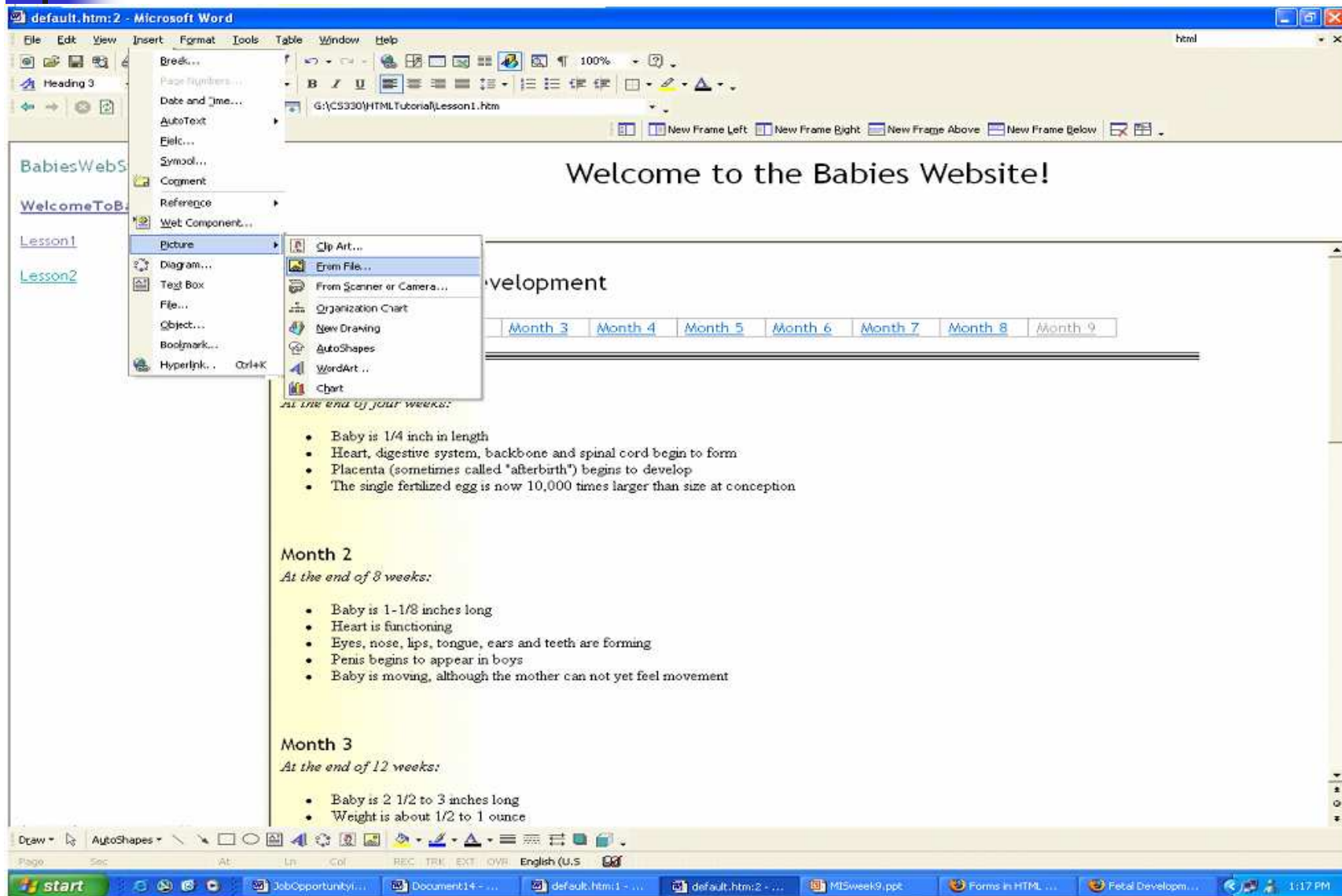
**Month 3**  
*At the end of 12 weeks:*

- Baby is 2 1/2 to 3 inches long
- Weight is about 1/2 to 1 ounce
- Baby develops recognizable features
- Nails start to develop and ears are visible
- Arms, hands, fingers, legs, feet are visible
- Eyes are almost fully developed
- Baby has developed most of the internal organs
- Baby's heart rate can be heard

**Month 4**  
*At the end of 4 months:*

- Baby is 6 1/2 to 7 inches long
- Weight is about 6 to 7 ounces
- Baby is developing reflexes, such as sucking and swallowing and may begin sucking his/her thumb
- Tooth buds are developing
- Sweat glands are forming on palms and soles
- Fingers and toes are well defined
- Sex is identifiable
- Skin is bright pink, transparent and covered with soft, downy hair
- Although recognizably human in appearance, the baby would not be able to survive outside the mother's body

# Insert images



# Insert images

default.htm:2 - Microsoft Word

File Edit View Insert Format Tools Table Window Help

Normal + Times Times New Roman 12

G:\CS330\HTMLTutorial\Lesson1.htm

BabiesWebSite

[WelcomeToBabiesWebsite](#)

[Lesson1](#)

[Lesson2](#)

## Welcome to the Babies Website!

Picture

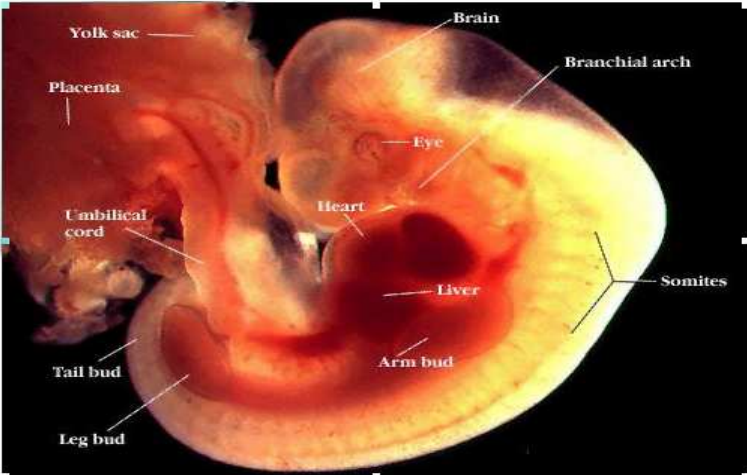
### Lesson 1: Fetal Development

Month 1 Month 2 Month 3 Month 4 Month 5 Month 6 Month 7 Month 8 Month 9

#### Month 1

*At the end of four weeks:*

- Baby is 1/4 inch in length
- Heart, digestive system, backbone and spinal cord begin to form
- Placenta (sometimes called "afterbirth") begins to develop
- The single fertilized egg is now 10,000 times larger than size at conception



Yolk sac

Placenta

Umbilical cord

Tail bud

Leg bud

Brain

Branchial arch

Eye

Heart

Liver

Somites

Arm bud

Draw AutoShapes