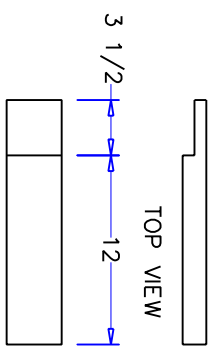
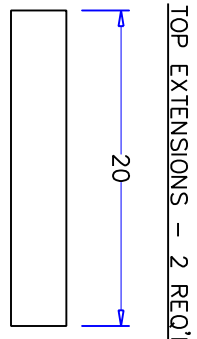


SIDE VIEW FRONT VIEW
 VERTICAL POSTS - 2 REQ'D

HARDWARE - (36) 1/4 x 3 LAG BOLTS & WASHERS.
 (2) 3/4 PIPING CLIPS W/ 2 WOOD SCREWS EACH

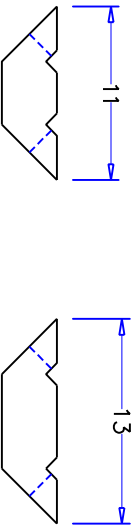


TOP VIEW



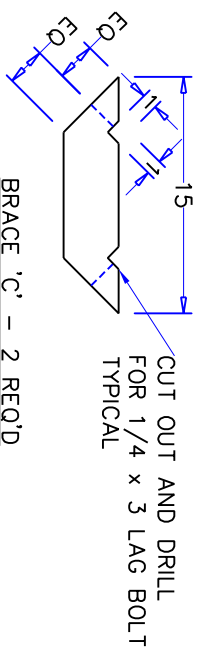
SIDE VIEW
 TOP EXTENSIONS - 2 REQ'D

HORIZONTAL SUPPORTS - 2 REQ'D

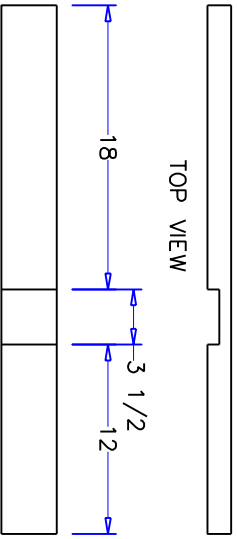


BRACE 'A' - 8 REQ'D

BRACE 'B' - 4 REQ'D



BRACE 'C' - 2 REQ'D



TOP VIEW

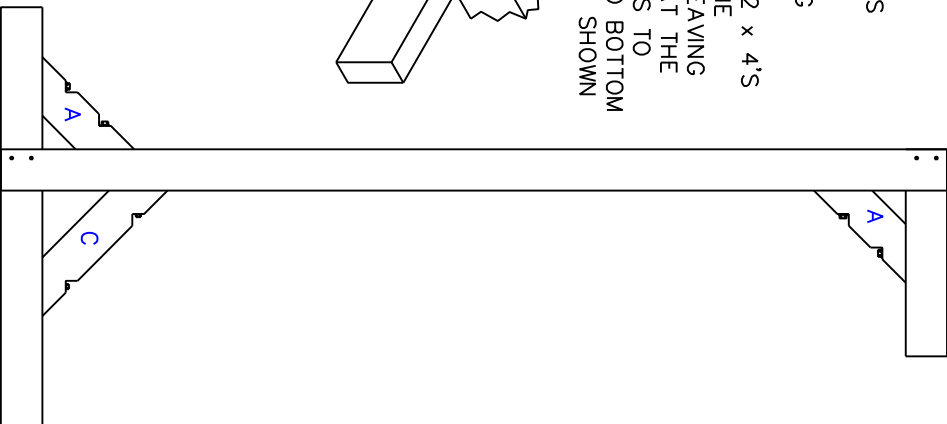
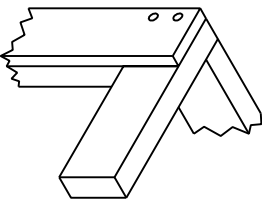
SIDE VIEW

BOTTOM EXTENSION - 2 REQUIRED

NOTE: EACH BOTTOM SUPPORT IS A MIRROR IMAGE OF THE OTHER

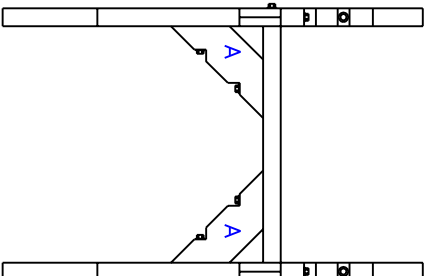
NOTES:

1. ALL WOOD MEMBERS ARE 2 x 4'S
2. IN LIEU OF CUTTING JOINTS YOU COULD SCREW AND GLUE 2 x 4'S TO 1 x 4'S FOR THE VERTICAL POSTS LEAVING A 3 1/2" SPACE AT THE TOPS AND BOTTOMS TO REST THE TOP AND BOTTOM EXTENSIONS ON AS SHOWN BELOW.

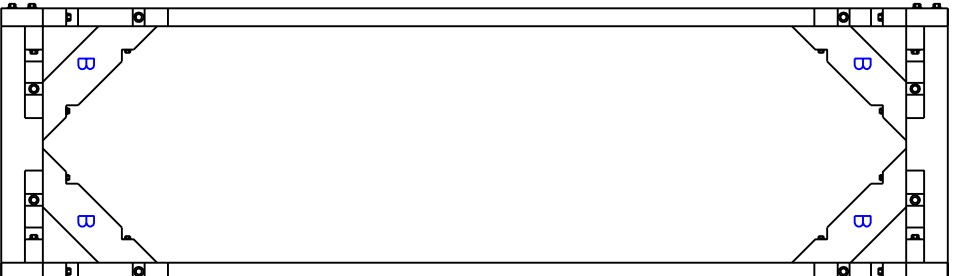


SIDE VIEW

1. GLUE & CLAMP THE TOP EXTENSIONS & BOTTOM EXTENSIONS TO THE VERTICAL SIDE POSTS. BOTH SIDE ASSEMBLIES SHOULD BE MIRROR IMAGES OF EACH OTHER. ALLOW TO DRY FOR 24 HOURS.
2. DRILL FOR (4) 1/4 x 3 LAG BOLTS AT THE TOPS AND BOTTOMS OF THE SIDE ASSEMBLIES AS SHOWN.
3. GLUE AND SCREW THE SIDE ASSEMBLIES TO THE HORIZONTAL SUPPORTS AT THE TOPS & BOTTOMS.
4. GLUE AND SCREW ALL OF THE BRACES AS SHOWN.
5. MOUNT A LAT BAR NEAR THE OUTER EDGES OF THE TOP EXTENSIONS USING 3/4 CLIPS. YOU CAN MAKE A LAT BAR BY ASSEMBLING 3/4" PIPING - (1) 24" LENGTH ATTACHED TO (2) 6" LENGTHS ON EA END WITH 45° ELBOWS.



TOP VIEW



FRONT VIEW