

Ogilvie Food Shelf Statistics

	Jan-05	Feb-05	Mar-05	Apr-05	May-05	Jun-05	Jul-05	Aug-05	Sep-05	Oct-05	Nov-05	Dec-05	Total	Undup	
Total Services:	23	45	37	26	39	26	36	49	34	32	54	45	446		
Total Households:	20	39	31	23	31	22	28	40	30	29	44	35	104		
Total Pounds:	1673	2816	2044	1500	2345	1597	2403	3161	2017	2158	4004	2695	28413		
Lbs./Person:	19.4	19.8	17.8	16.9	17.9	16.3	18.5	17.3	16.1	17.8	18.8	16.2	17.8		
0-17	33	54	46	34	51	38	52	73	46	45	87	68	627	157	
18-64	45	77	57	50	74	56	72	102	71	70	118	87	879	195	
65+	8	11	12	5	6	4	6	8	8	6	8	11	93	18	
													People served:	1599	370

	Jan-04	Feb-04	Mar-04	Apr-04	May-04	Jun-04	Jul-04	Aug-04	Sep-04	Oct-04	Nov-04	Dec-04	Total	Undup	
Total Services:	55	52	57	39	30	36	37	39	25	30	42	27	469		
Total Households:	45	45	44	34	27	31	30	32	22	25	32	22	119		
Total Pounds:	2895	3240	3263.4	2359	1858	2294	1958.4	2328.7	1317.2	1726	2905.5	1843.2	27988		
Lbs./Person:	16.6	17.3	17.1	18.6	20.0	20.3	18.3	17.9	15.9	17.1	18.6	17.9	17.9		
0-17	63	84	83	52	40	38	40	58	32	45	65	40	640	187	
18-64	99	93	97	65	46	66	56	63	46	47	79	55	812	209	
65+	12	10	11	10	7	9	11	9	5	9	12	8	113	25	
													People served:	1565	421

	Jan-03	Feb-03	Mar-03	Apr-03	May-03	Jun-03	Jul-03	Aug-03	Sep-03	Oct-03	Nov-03	Dec-03	Total	Undup	
Total Services:	40	35	36	43	39	44	41	50	43	59	57	50	537		
Total Households:	31	27	29	33	32	35	33	43	34	46	46	41	124		
Total Pounds:	2290	2339	2229	2704	2391	2894	2722	3017	2496	2990	3859	3212	33142		
Lbs./Person:	19.9	20.2	20.6	18.9	19.3	22.1	21.1	18.4	18.6	16.7	20.1	19.3	19.5		
0-17	44	45	32	59	53	49	50	67	54	68	78	69	668	185	
18-64	64	65	69	79	64	76	76	91	69	101	103	83	940	222	
65+	7	6	7	5	7	6	3	6	11	10	11	14	93	14	
													People served:	1701	421

	Jan-02	Feb-02	Mar-02	Apr-02	May-02	Jun-02	Jul-02	Aug-02	Sep-02	Oct-02	Nov-02	Dec-02	Total	Undup	
Total Services:	26	43	29	26	32	30	30	28	20	28	39	36	367		
Total Households:	22	39	25	24	27	26	25	21	14	22	32	29	95		
Total Pounds:	1529	2370	2064	2179	1763	1828	1776	1733	1192	2023	2568	2549	23574		
Lbs./Person:	18.2	16.2	22.0	19.3	17.3	16.3	18.1	18.0	19.9	22.5	23.6	21.6	19.3		
0-17	37	67	41	53	36	50	37	37	27	38	45	47	515		
18-64	44	75	50	58	62	61	61	57	31	49	59	64	671		
65+	3	4	3	2	4	1	0	2	2	3	5	7	36		
													People served:	1222	

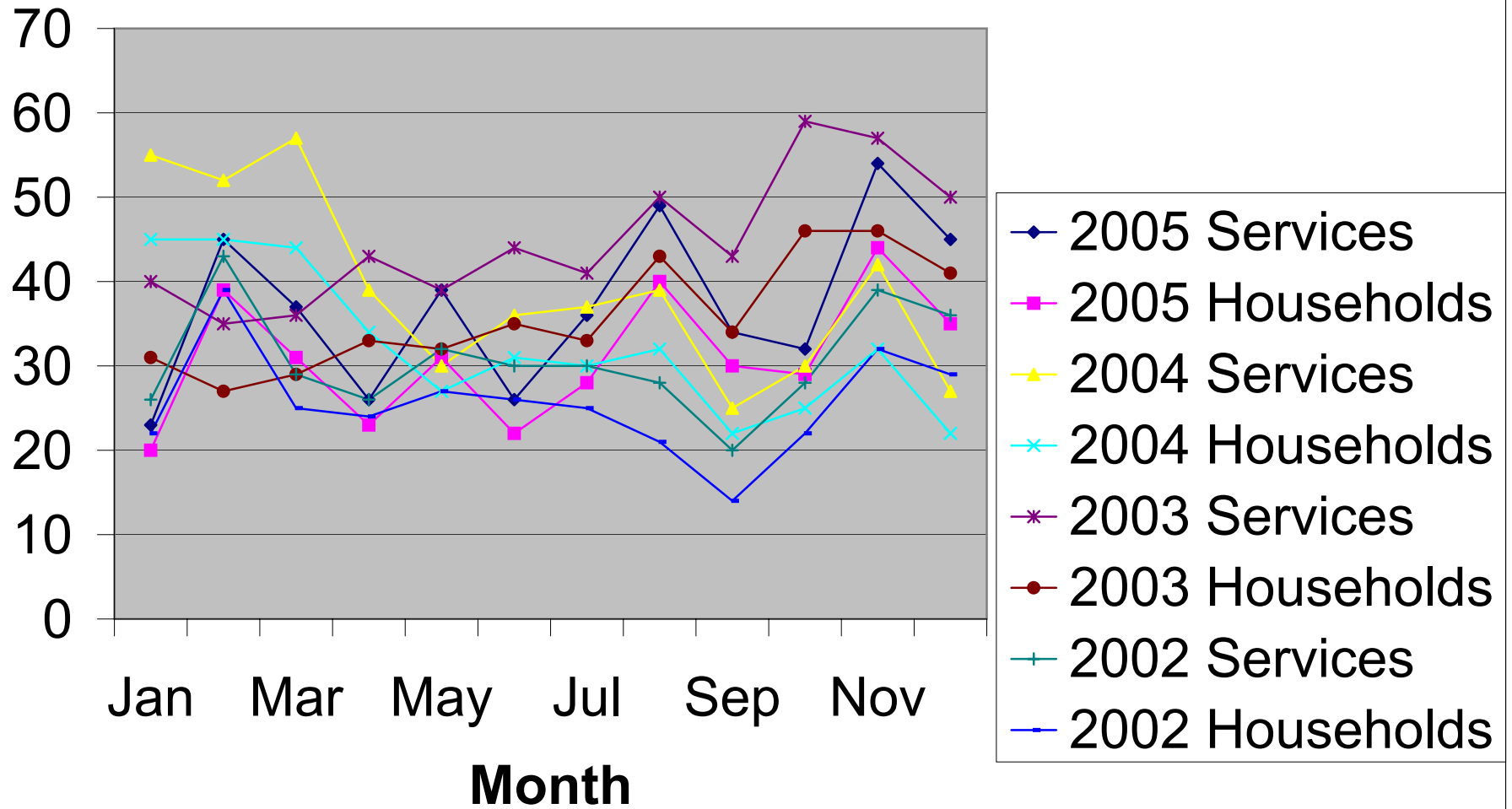
Households using the foodshelf N times/year, 2005

<u>N</u>	<u>Count</u>	<u>Sum</u>	<u>%</u>
1	38	38	36.5
2	21	59	56.7
3	6	65	62.5
4	4	69	66.3
5	2	71	68.3
6	6	77	74.0
7	8	85	81.7
8	6	91	87.5
9	2	93	89.4
10	2	95	91.3
11	1	96	92.3
12	1	97	93.3
13	1	98	94.2
14	0	98	94.2
15	1	99	95.2
16	2	101	97.1
17	0	101	97.1
18	0	101	97.1
19	1	102	98.1
20	1	103	99.0
21	0	103	99.0
22	1	104	100.0
23	0	104	100.0
24	0	104	100.0

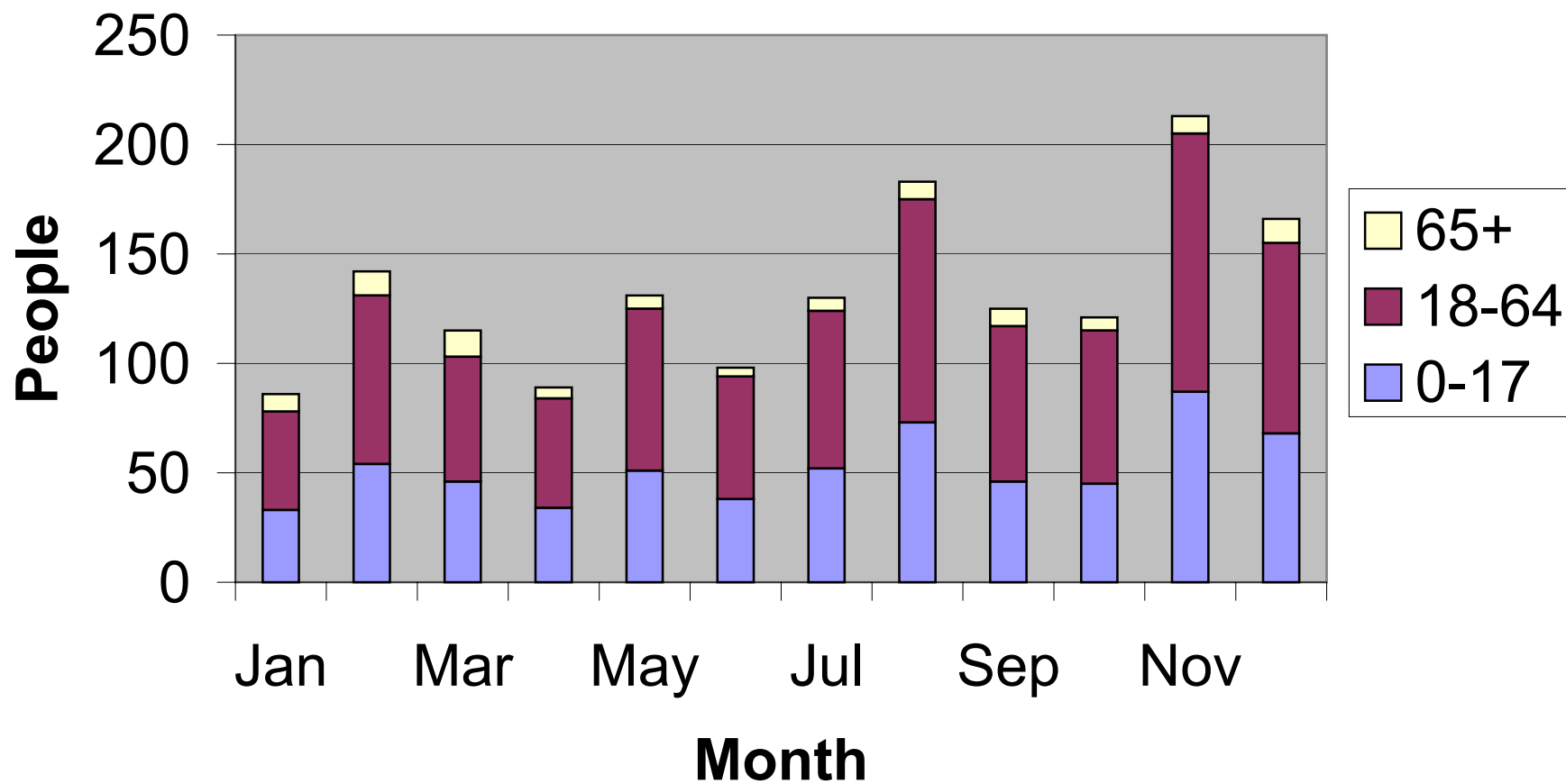
Average number of services/household = 4.29

Median number of services/household = 1.67

Services by Month 2002-05



Services by age group by month, 2005



Foodshelf uses per household, 2005

