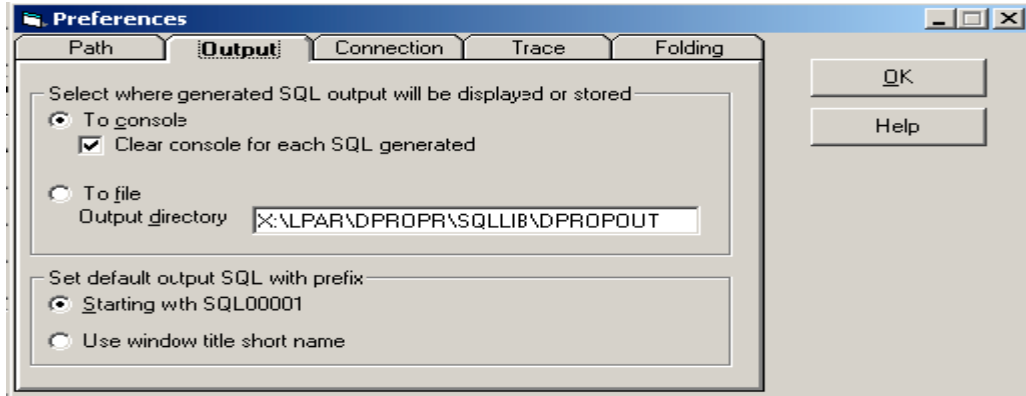
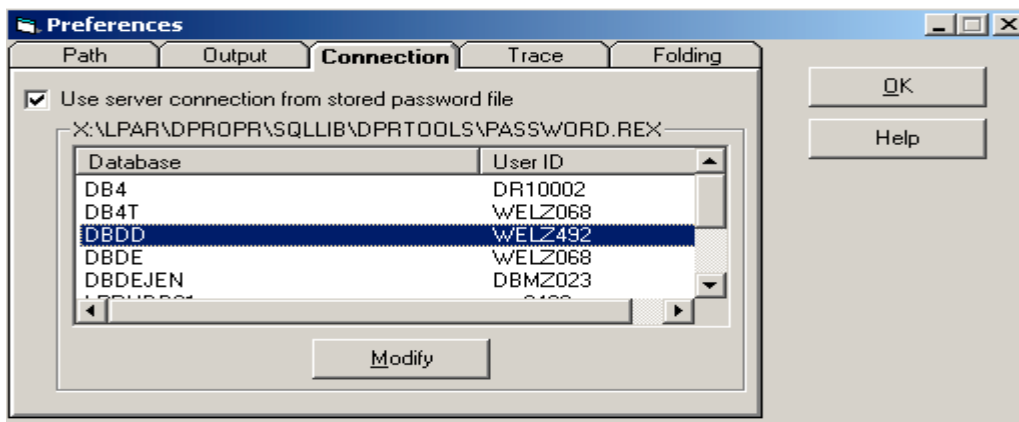


7) Output Tab is where you give the directory where the generated SQL and the results of SQLs are stored



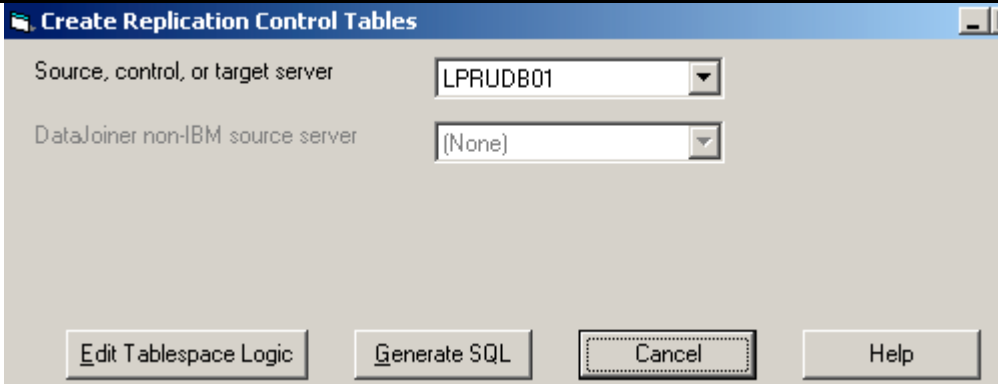
8) In the Connection TAB include the USER id that is going to use it.



Trace and Holding are optional

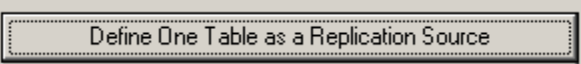
**II) Creating control tables in Local Machine**

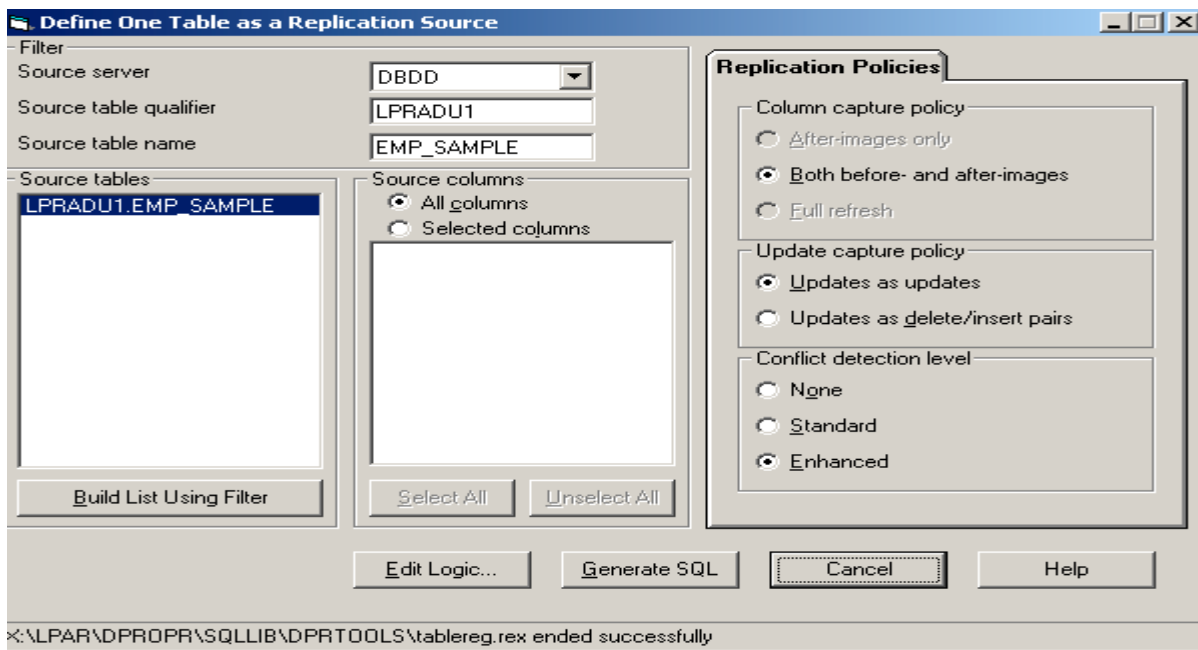
1) Click Replication Control tables tab in the main window



- 2) Choose the Target Server(your local machine)
- 3) Either Choose **Edit logic** and change the values in the REXX variables for customizing to your requirement or **Generate Sql** to change it sraight away in the generated DDLs.
- 4) File → Save
- 5) Run , will execute the query and create the tables

### III) Define the Replication Source

- 1) Choose  from the main window will put you in;



- 2) Choose the server and the table and Generate SQL to create below statements;  
Estimate the size of the CD tables to be 10% of the size of the base tables

```
-- If you don't see: ' now done interpreting...' then check your REXX code.now done interpreting --
-- REXX -- password file PASSWORD.REX connect to the source-server
```

```
CONNECT TO DBDD USER WELZ492 USING pswd;
```

```
-- LPRADU1.EMP_SAMPLE is assumed a USER table reading REXX logic file SRCESVR.REX If you don't see:
-- now done interpreting..' then check your REXX code.in SRCESVR.REX, about to create a CD TS
```

```

SET CURRENT SQLID = 'WELZ492';

CREATE TABLESPACE DPCDTS01 IN LPRUDB01
  PRIQTY 48 SECQTY 48 FREEPAGE 0 PCTFREE 5 SEGSIZE 16 CLOSE NO LOCKSIZE TABLE ;

ALTER TABLE LPRADU1.EMP_SAMPLE DATA CAPTURE CHANGES;          enable change data capture

CREATE TABLE LPRADU1.EMP_SAMPLE_CD1
  (IBMSNAP_UOWID          CHAR(10) FOR BIT DATA NOT NULL
  ,IBMSNAP_INTENTSEQ     CHAR(10) FOR BIT DATA NOT NULL
  ,IBMSNAP_OPERATION     CHAR(1)  NOT NULL
  ,EMP_NO CHAR(5) NOT NULL      ,      XEMP_NO CHAR(5)
  ,EMP_NAME CHAR(25)          ,      XEMP_NAME CHAR(25)
  ,EMP_ADDRESS1 CHAR(15)     ,      XEMP_ADDRESS1 CHAR(15)
  ,EMP_ADDRESS2 CHAR(15)     ,      XEMP_ADDRESS2 CHAR(15)
  ,EMP_PHONE_RES CHAR(10)    ,      XEMP_PHONE_RES CHAR(10)
  ,EMP_SALARY DECIMAL(8 , 2) ,      XEMP_SALARY DECIMAL(8 , 2)
  ,EMP_DOB CHAR(8)           ,      XEMP_DOB CHAR(8)
  ,EMP_DOJ CHAR(8)           ,      XEMP_DOJ CHAR(8)
  ,EMP_DOU TIMESTAMP         ,      XEMP_DOU TIMESTAMP
  ,SPL_INSTRUCTIONS VARCHAR(100),    XSPL_INSTRUCTIONS VARCHAR(100)) IN LPRUDB01.DPCDTS01;

CREATE TYPE 2 UNIQUE INDEX LPRADU1.EMP_SAMPLE_IX1 ON
  LPRADU1.EMP_SAMPLE_CD1 (IBMSNAP_UOWID ASC, IBMSNAP_INTENTSEQ ASC)
  PRIQTY 48 SECQTY 48 FREEPAGE 0 PCTFREE 10 CLOSE NO ;

```

```

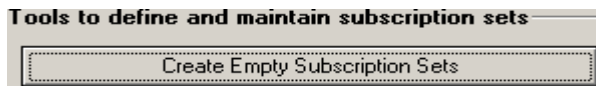
-- insert a registration record into ASN.IBMSNAP_REGISTER
INSERT INTO ASN.IBMSNAP_REGISTER (GLOBAL_RECORD, SOURCE_OWNER,
  SOURCE_TABLE, SOURCE_VIEW_QUAL, SOURCE_STRUCTURE, SOURCE_CONDENSED,
  SOURCE_COMPLETE, CD_OWNER, CD_TABLE, PHYS_CHANGE_OWNER, PHYS_CHANGE_TABLE,
  DISABLE_REFRESH, ARCH_LEVEL, BEFORE_IMG_PREFIX, CONFLICT_LEVEL,
  PARTITION_KEYS_CHG) VALUES ('N', 'LPRADU1', 'EMP_SAMPLE', 0 , 1 , 'Y', 'Y',
  'LPRADU1', 'EMP_SAMPLE_CD1', 'LPRADU1', 'EMP_SAMPLE_CD1', 0 , '0201', 'X',
  '2', 'N');


COMMIT;

```

- 4) Save the above and Run would create CD tables in the source server
- 5) GRANT SELECT, UPDATE, INSERT, DELETE on EMP\_SAMPLE\_CD1 to *user\_id*, *capture\_id*
- 6) **CAPTURE id** is the *capture* job name of the startup proc.
- 7) Reinitialize the Captuer started task in SDSF using  
**/F capture\_jobname, REINIT**  
 e.g: **/F DBCAPDBE, REINIT**

#### IV Subscription Sets (Target server)



- a) Click 
- b) Fill the values as per below

**Create Empty Subscription Sets**

Source server: DBDD

Target servers:  DBDD,  LPRUDB01,  LPRUNTDB,  SAMPLE

Start Time: Month: 10, Day: 30, Year: 2002, Hour: 15, Minute: 26

Use system time for default time

Control server:  Same as target server

Apply qualifier:  Specific: AQ123

Set name:  Specific: SET123

Subscription set timing:  At event,  Every 3 minutes

Blocking factor: Upper limit in MINUTES of transactions to replicate at one time: 30

Buttons: Generate SQL, Cancel, Help

Generate the SQL , Save and Run

c) Click

Add a Member to Subscription Sets

d) Will take to the below window. Change the values in the fields. create a primary on the source tables by choosing the radio button. If the source table has a primary already choose Source primary key button.

**Add a Member to Subscription Sets**

Server filter: Source server: DBDD, Control servers: DBDD, LPRUDB01, LPRUNTDB

Build List >>

Select subscription sets:

Target server	Control server	Apply qualifier	Set name
LPRUDB01	LPRUDB01	AQ123	SET123

Build List >>

Filter for source server DBDD: Qualifier: LPRADU1, Name: %

Tables,  Views

Build List >>

Select a source table:

Source table	Before image prefix
LPRADU1.EMP_SAMPLE	X

Replicate to the target table:  All columns,  Selected columns

Target table: Target table qualifier: LPRADU1, Target table name: EMP\_SAMPLE\_T, Target structure: User Copy

DB2 DataJoiner: Non-IBM target server: (None), Nickname qualifier: LPRADU1, Nickname: EMP\_SAMPLE

Target unique index:  Unique index + primary keys,  Primary key columns, with '+' or ' ' following each name, with no blanks in between: Emp\_no+,  Source primary key

Where clause:

Buttons: Edit Predicate Logic..., Edit Target Table Logic..., Generate SQL, Cancel, Help

X:\LPAR\DPORPR\SQLLIB\DPRTTOOLS\addmembr.rex ended successfully

e) Edit Targer Table Logic will put you in the below window.

```

G5VR.REX - Notepad
File Edit Format Help

TSNAME='LPRTG001'

SAY "-- About to create a target table tablespace";
SAY "CREATE TABLESPACE " TSNAME ||,
    " MANAGED BY system USING "||,
    " ('C:\dataprop\lprt001');";
SAY "";
OUT_TARGET_TABLESPACE=..TSNAME ;
    
```

f) Change the table space name to your requirement in the above text and also the container

g) Generate SQL → Save → Run

**V) Starting the Apply program**

a) Check the Target table is created by starting the control center.

b) Create a password file **h:\dbprop\work\\*.pwd** with the name of the file being the name of the Apply Qualifier (AQ123.pwd)  
 Add these two lines with the actual password typed

```

AQ123.pwd - Notepad
File Edit Format Help

SERVER=DBDD USER=WELZ492 PWD=
SERVER=LPRUDB01 USER=prg0492 PWD=
    
```

- c) Go to Command Window
- d) Go to `cd x:\lpar\dpropr\work`
- e) issue `SET db2instance=db2`
- f) issue `set db2dbdft=target database name → lprudb01`
- g) type below command on the command line

**ASNAPPLY** *applyqualifer target\_server TRCERR > file.log*

*e.g., ASNAPPLY AQ123 LPRUDB01 TRCERR > AQ123.LOG*

h) This will do A Full refresh of the data initially and CAPTURES only the changes from then

i) Do same changes in the source server and wait for 3 minutes till it get applied in TARGET tables.

**VI) Stopping the APPLY process**

- a) Go to Command Window
- b) Go to `x:\lpar\dpropr\work`

- c) issue SET db2instance=db2
- d) issue set db2dbdft=*target database name* → lprudb01
- e) type below command on the command line

**ASNASTOP** *applyqualifier*

*e.g.*, ASNASTOP AQ123