



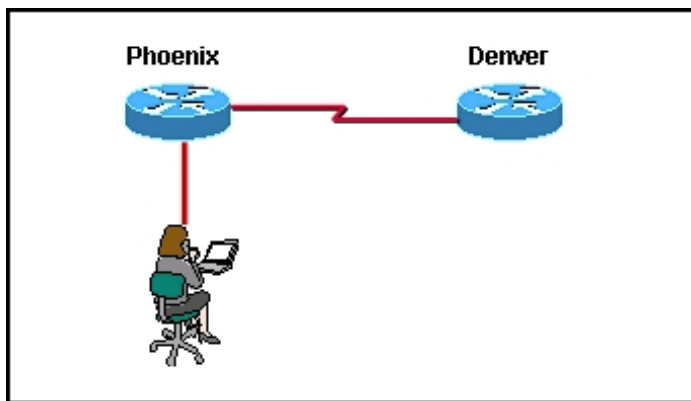
Assessment System

3. Take Assessment

Take Assessment - CCNA 607 Certification Practice Exam - CCNA 4 WAN Technologies Version 3.1

Time Remaining:

16



A network administrator can ping the Denver router, but gets a 'Password Required but None Set' message when trying to connect remotely via Telnet. Which command sequence must be applied to the Denver router to allow remote access?

```
Router(config)# line console 0
Router(config-line)# login
Router(config-line)# password cisco
Router(config)# line vty 0 4
Router(config-line)# login
Router(config-line)# password cisco
Router(config)# line virtual terminal
Router(config-line)# enable login
Router(config-line)# password cisco
Router(config)# line vty 0 4
Router(config-line)# enable secret
Router(config-line)# password cisco
Router(config)# enable secret cisco
Router(config)# enable cisco
```

17 What steps are required to implement and assign hosts to VLANs? (Choose two.)

- Create the VLANs on a switch.
- Assign ports to the VLANs.
- Select the VLAN number on the host machine.
- Configure the switchports with IP addresses.

18 Which of the following applications use the UDP protocol? (Choose two.)

- Telnet
- SNMP
- SMTP
- SQL
- TFTP

19

```

Router # [redacted] ← (1)

Codes: C - connected, S - static, I - IGRP, R - RIP, M - mobile,
       B - BGP D - EIGRP, EX - EIGRP external, O - OSPF
<output text omitted>

Gateway of last resort is not set (2)

R 172.30.0.0/16 [redacted]/3] via 200.100.100.2, 00:00:14, Serial0
(3) → [redacted] 192.18.2.0/24 [100/8542] via 192.168.100.11, 00:00:14, Serial0
(4) → [redacted] 10.5.5.0/24 is directly connected, Ethernet0
    
```

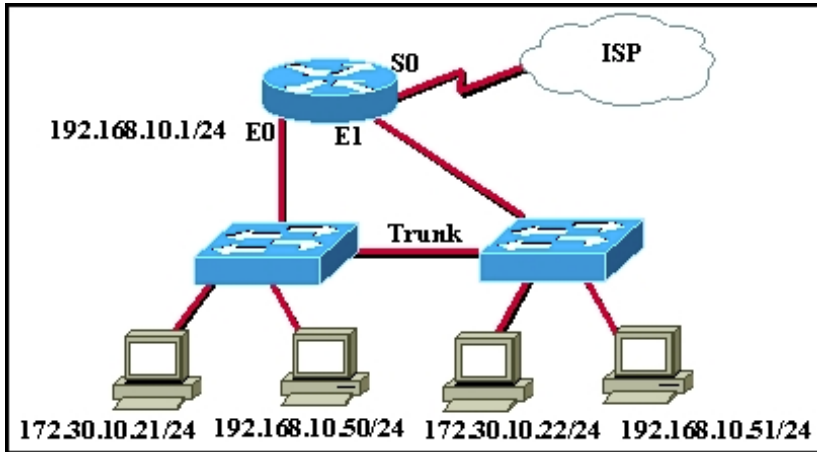
When troubleshooting a network, it is important to interpret the output of various router commands. Using the graphic, identify which of the following statements are true. (Choose three.)

- The missing information for Blank 1 is the command **show ip route**.
- The missing information for Blank 1 is the command **debug ip route**.
- The missing information for Blank 2 is the number 100.
- The missing information for Blank 3 is the letter R.
- The missing information for Blank 3 is the letter I.
- The missing information for Blank 4 is the letter C.

20 Assuming a subnet mask of 255.255.224.0, which of the following would be valid *host* addresses? (Choose three.)

- 124.78.103.0
- 125.67.32.0
- 125.78.160.0
- 126.78.48.0
- 176.55.96.0
- 186.211.100.0

21



A company has outgrown the address space provided by its 192.168.10.0 network. To accommodate new users, the network administrator decided to implement VLANs and do the following:

1. Place the users of the 192.168.10.0 network in VLAN 168.
2. Assign new users an IP address from the 172.30.10.0/24 network.
3. Place users of the 172.30.10.0 network in VLAN 30.

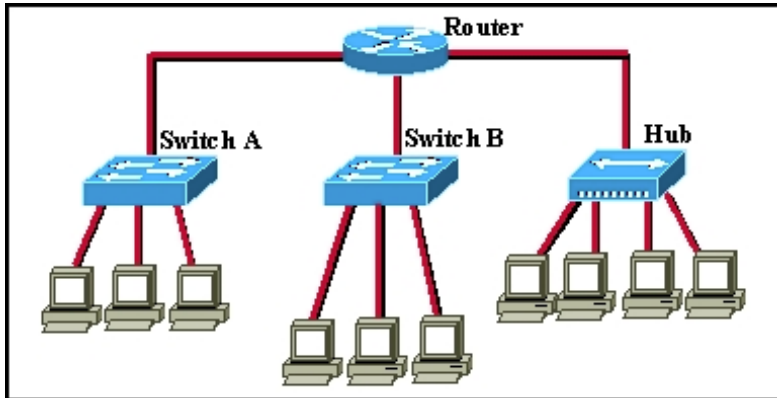
After implementing the planned VLANs and connecting the network as shown in the graphic, the administrator finds that the users in VLAN 30 are unable to access the Internet or communicate with users in VLAN 168. However, VLAN 168 users are able to access the Internet and each other.

Using the graphic, what should be done to enable users in VLAN 30 to communicate with VLAN 168 users and the Internet? (Choose three.)

- Configure E1 with an address in the 172.30.10.0/24 network.
- Place all VLAN 30 hosts on the same switch.
- Configure all hosts with 192.168.10.1 as the default gateway.
- Connect the router's E1 port to a switch port configured for VLAN 30.
- Connect the router's E1 port to a switch port configured for VLAN 168.
- Add the network 172.30.10.0 to the dynamic routing protocol process.

- 22 After several configuration changes are made to a router, the **copy run start** command is issued. Where will the changes be stored?
- flash
 - ROM
 - NVRAM
 - RAM
 - the configuration register
 - a TFTP server

23



Refer to the diagram. All ports on Switch A are in the Sales VLAN and all ports on Switch B are in the Accounting VLAN. How many broadcast domains and how many collision domains are shown? (Choose two).

- 3 collision domains
- 3 broadcast domains
- 5 broadcast domains
- 9 collision domains
- 10 collision domains
- 13 collision domains

24

```
Serial1 is up, line protocol is up
Hardware is HD64570
Internet address is 200.200.200.1/24
MTU 1500 bytes, BW 1544 Kbit, DLY 20000 usec,
  reliability 255/255, txload 1/255, rxload 1/255
Encapsulation PPP, loopback not set
Keepalive set (10 sec)
LCP Open
Open: IPCP, CDPCP
Last input 00:00:04, output 00:00:04, output hang never
Last clearing of "show interface" counters 00:08:59
Input queue: 0/75/0/0 (size/max/drops/flushes); Total output drops: 0
Queueing strategy: weighted fair
Output queue: 0/1000/64/0 (size/max total/threshold/drops)
Conversations 0/1/256 (active/max active/max total)
Reserved Conversations 0/0 (allocated/max allocated)
Available Bandwidth 1158 kilobits/sec
```

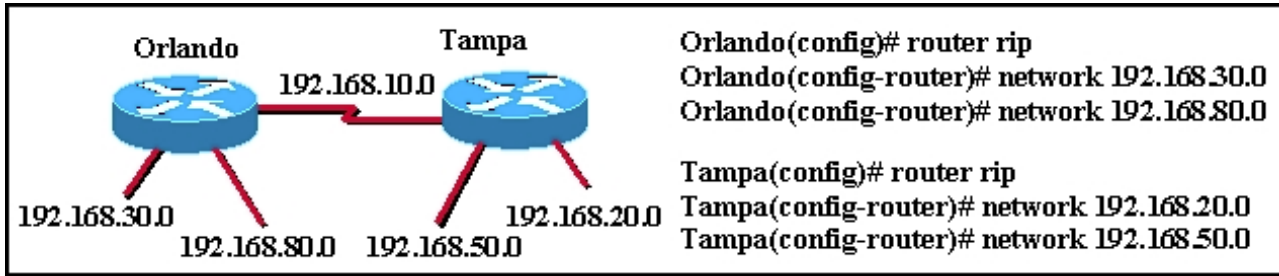
According to the the provided router output, which of the following statements is true regarding PPP operation?

- Only the link-establishment phase completed successfully.
- Only the network-layer phase completed successfully.
- Neither the link-establishment phase nor the the network-layer phase completed successfully.
- Both the link-establishment and network-layer phase completed successfully.

25 What command will display a list of commands available for viewing the status of the router?

- Router# ?show
- Router# sh?
- Router# show ?
- Router# help
- Router# status ?

26



The Tampa and Orlando routers have been configured but do not have full connectivity. Using the partial command output and the diagram, which of the following will occur when testing the network?

- Tampa and Orlando will not be able to ping each other through the serial interfaces.
- Tampa and Orlando will not learn any routes through the RIP process.
- Orlando will have all five of the networks listed in its routing table.
- Tampa will have all five of the networks listed in its routing table.

27 Which of the following commands will display "Serial0 is up, line protocol is up"? (Choose two.)

- Router# **show ip route**
- Router# **show protocols**
- Router# **show interfaces**
- Router# **show ip protocols**
- Router# **show running-config**
- Router# **show cdp neighbors detail**

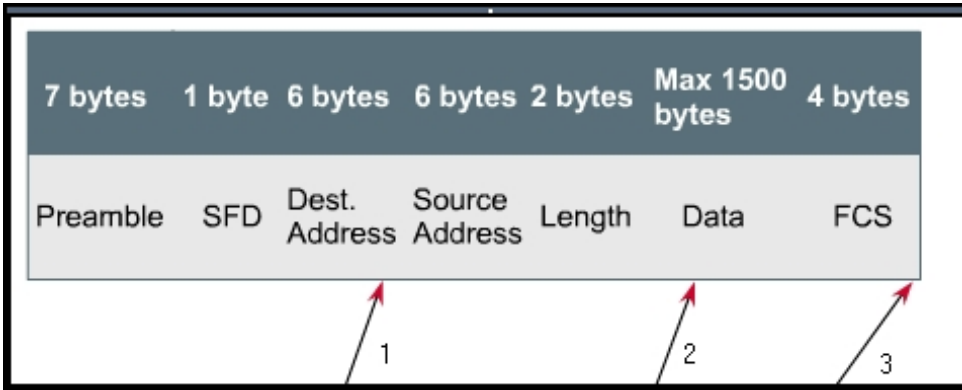
28 The router reads each bit to determine the class of an address. Which of the following binary numbers would the router identify as public class A addresses? (Choose three.)

- 00001010.10101100.11001100.00000111
- 00011111.11110011.11111111.00111011
- 01011101.11100001.11001100.11011011
- 10000000.11111000.11000111.11110011
- 00010111.11011011.11000001.11001100

29 A serial link between RouterA and RouterB is configured for PPP with PAP authentication. Which of the following additional commands are required on the routers in order for RouterB to authenticate to RouterA? (Choose two.)

- RouterA(config)# **username stranger password letmein**
- RouterB(config)# **username stranger password letmein**
- RouterA(config-if)# **ppp pap sent-username stranger password letmein**
- RouterB(config-if)# **ppp pap sent-username stranger password letmein**

30



A switch can be configured for three different forwarding modes based on how much of a frame is received before the forwarding process begins. Each of the numbered arrows in the accompanying graphic signifies the point in a frame where a particular forwarding mode will begin. Which one of the following groups reflects the sequence of forwarding modes signified by the numbered arrows?

- 1) fast forward
- 2) fragment free
- 3) store-and-forward
- 1) store-and-forward
- 2) fragment free
- 3) fast forward
- 1) fragment free
- 2) fast forward
- 3) store-and-forward
- 1) fast forward
- 2) store-and-forward
- 3) fragment free

Showing 2 of 4

[<Prev](#)

Page:

[Next>](#)

Close Window

All content copyright 1992-2002 Cisco Systems, Inc. [Privacy Statement](#) and [Trademarks](#).