

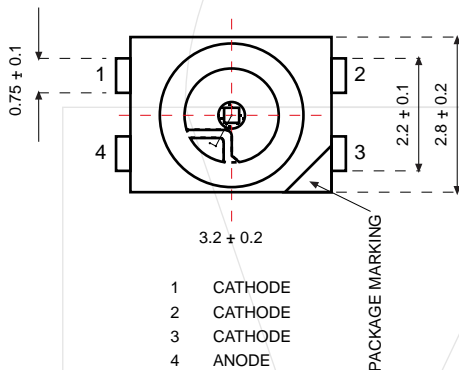


# Surface Mount Series

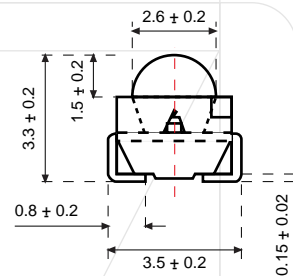
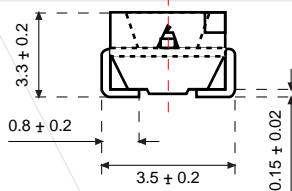
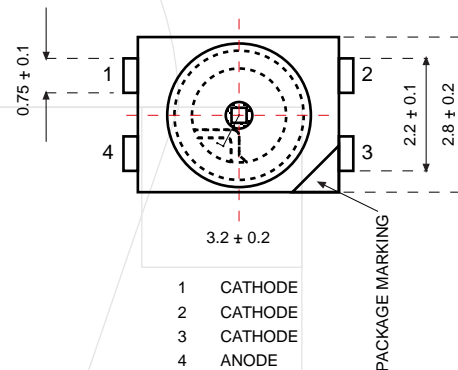
Surface  
Mounted  
Device

Red  
Amber  
Green  
Blue  
White

Outline Dimension - Power SMD



Outline Dimension - Power SMD with LENS



REFERENCE ONLY

## Absolute Maximum Rating

Items	Symbol	Red	Amber	Green	Blue / White	Unit
Forward Current	$I_F$	50	50	25	25	mA
Peak Forward Current	$I_{FP}$	200	200	100	100	mA
Reverse Voltage	$V_R$	5	5	5	5	V
Power Dissipation	$P_D$	130	130	105	105	mW
Operating Temperature	$T_{opr}$	-40 to +100	-40 to +100	-40 to +100	-40 to +100	°C
Storage Temperature	$T_{stg}$	-40 to +100	-40 to +100	-40 to +100	-40 to +100	°C
Junction Temperature	$T_j$	+110	+110	+110	+110	°C
Junction / Ambient	$R_{th JA}$	450	450	400	450	°C / W
Junction / Solder point	$R_{th JS}$	300	300	280	300	°C / W



Global Component Network LLC

5142 Clareton Dr, Unit 160, Agoura Hills, CA91301, USA

Tel: (818) 503 8204

Fax: (818) 301 2757

Website: [www.gcndirect.com](http://www.gcndirect.com)

Email: [sales@gcndirect.com](mailto:sales@gcndirect.com)

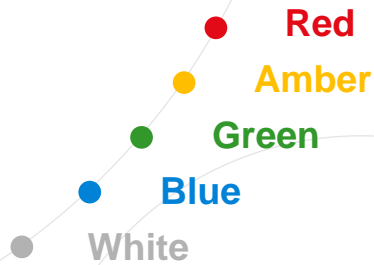
LITEFO LTD.

Website: [www.litefo.com](http://www.litefo.com)

Email: [sales@litefo.com](mailto:sales@litefo.com)



# Surface Mount Series



## Features & Benefits

- Available in 70mA forward current offering increased brightness
- Excellent heat dissipation and conductivity
- Long life span / Highly reliable
- Sharp and vibrant colors
- Available in two models with varying viewing angles:
  - 120 degrees - Power SMD
  - 60 degrees - Power SMD with Lens

## Applications

- Video / Graphic Electronic Message Signs
- General Lighting
- Signs and Advertising Illumination
- Decorative Lighting
- LCD backlight



Typical Electrical - Optical Characteristics at Ta 25°C, I<sub>F</sub> = 70mA

## Typical Electrical

Part No.	Size (mm)	Color	Viewing Angle	Luminous Intensity (mcd)		Dominant Wavelength(nm) Typ.	Forward Voltage (dc) (V)		
				Min.	Typ.		Typ.	Max.	
3-in-1 SMD									
FM10TPPAC1	3.2 X 2.8	Red	120	180	300	612 - 625	2.3	2.6	
FM10TPPAC1	3.2 X 2.8	Green	120	280	450	520 - 540	3.6	4.2	
FM10TPPAC1	3.2 X 2.8	Blue	120	71	110	460 - 480	3.6	4.2	
FM10THRAC1	3.2 X 2.8	Red	120	280	400	628	2.3	2.6	
FM10PBLAC1	3.2 X 2.8	Blue	120	112	160	470	3.6	4.2	
FM10PPGAC1	3.2 X 2.8	Green	120	355	560	525	3.6	4.2	
FM10TYLAC1	3.2 X 2.8	Amber	120	280	300	591	2.3	2.6	
FM10PWNAC1	3.2 X 2.8	White	120	280	450	-	3.6	4.2	