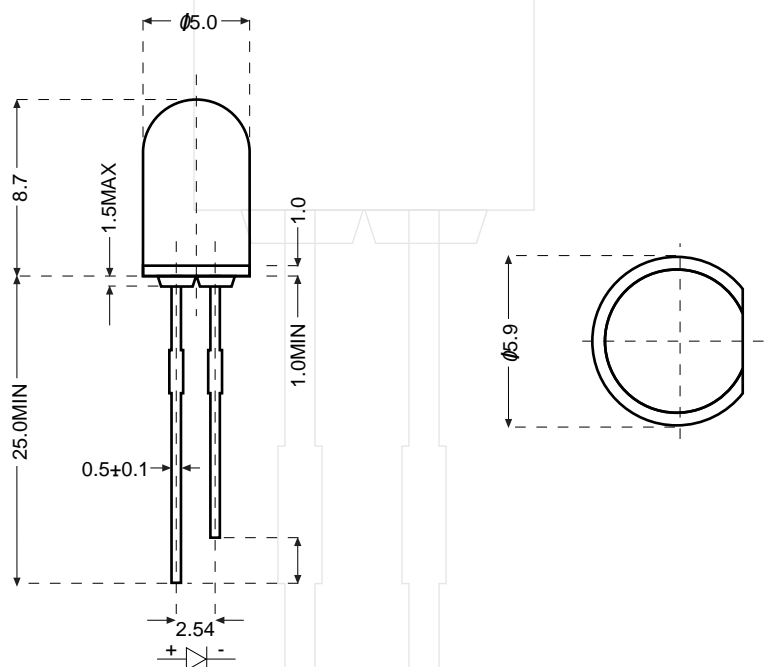
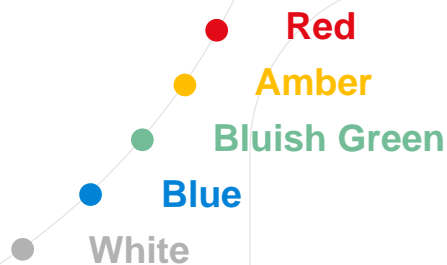




# Round LED Series



REFERENCE ONLY

## Absolute Maximum Rating

Items	Symbol	Red	Blue / Bluish Green / White	Amber	Unit
Forward Current	$I_F$	50	25	50	mA
Peak Forward Current	$I_{FP}$	200	100	200	mA
Reverse Voltage	$V_R$	5	5	5	V
Power Dissipation	$P_D$	130	105	130	mW
Operating Temperature	$T_{opr}$	-40 to +95	-20 to +75	-40 to +95	°C
Storage Temperature	$T_{stg}$	-40 to +100	-30 to +80	-40 to +100	°C
Lead Soldering Temperature	$T_{sol}$	260	260	260	°C
		5 seconds	3 seconds	5 seconds	



**Global Component Network LLC**

5142 Clareton Dr, Unit 160, Agoura Hills, CA91301, USA

Tel: (818) 503 8204

Fax: (818) 301 2757

Website: [www.gcndirect.com](http://www.gcndirect.com)

Email: [sales@gcndirect.com](mailto:sales@gcndirect.com)

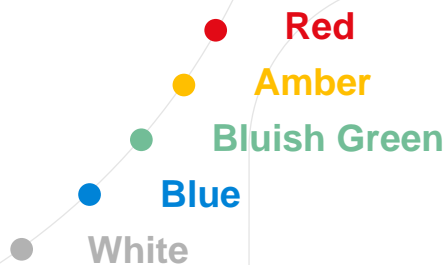
**LITEFO LTD.**

Website: [www.litefo.com](http://www.litefo.com)

Email: [sales@litefo.com](mailto:sales@litefo.com)



# Round LED Series



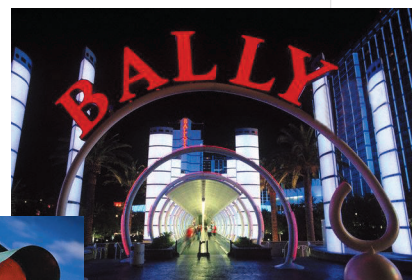
Round LED Lamp

## Features & Benefits

- High luminous intensity with low power consumption
- Long life span and low maintenance cost
- Excellent visibility in daylight and adverse weather conditions
- Conform to the requirements of ITE, SAE and EE
- Consume 85% less electricity than incandescent lamps

## Applications

- Transportation / Traffic Signals
- Highway Variable Message Signs
- Signal / Warning Lights
- Architectural Lighting
- General Illumination
- Automotive / Truck / Bus Lighting



Typical Electrical - Optical Characteristics at Ta 25°C, I<sub>F</sub> = 20mA

## Typical Electrical

Part No.	Size	Color	Viewing Angle	Luminous Intensity (mcd)		Dominant Wavelength(nm)	Forward Voltage (dc) (V)	
				Min.	Typ.		Typ.	Max.
FC530ATHR11	5	Red	30	2130	3300	628	2.3	2.6
FC530ATYL11	5	Amber	30	2130	3000	591	2.3	2.6
FC530APBG11	5	Bluish Green	30	3000	4800	505	3.6	4.2
FC530APBL11	5	Blue	30	1100	1600	470	3.6	4.2
FC530BAYL11	5	Amber	30	3000	4500	591	2.1	2.6
FC530BAHR11	5	Red	30	2130	3500	624	2.1	2.6
FC560APWN11	5	White	60	550	900	-	3.6	4.2
FC530ASWH21	5	White	30	3000	4800	-	3.4	4.2